

School Malaise Trap Program

Species Image Library

The images of the species collected in your Malaise trap are shown below. A single representative from each species was selected to be photographed; in some cases, only a damaged specimen was available.



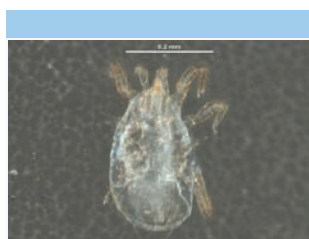
[Dorsal]
Philodromus rufus vibrans
BIN URI: BOLD:AAB2769



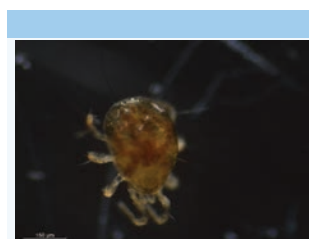
[Dorsal]
Philodromus spectabilis
BIN URI: BOLD:AAY1021



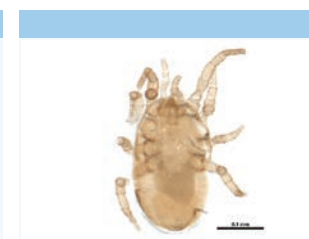
[Dorsal]
Xysticus audax
BIN URI: BOLD:AAP2437



[Dorsal]
Phytoseiidae
BIN URI: BOLD:ACT7834



[Dorsal]
Arachnida
BIN URI: BOLD:ABV8662



[Dorsal]
Mesostigmata
BIN URI: BOLD:ACP9436



[Dorsal]
Phalangium opilio
BIN URI: BOLD:AAI4346



[Dorsal]
Collembola
BIN URI: BOLD:AAN4907



[Dorsal]
Psyllobora borealis
BIN URI: BOLD:ACA7954



[Dorsal]
Cartodere nodifer
BIN URI: BOLD:AAO0516



[Lateral]
Agromyzidae
BIN URI: BOLD:AAP6787



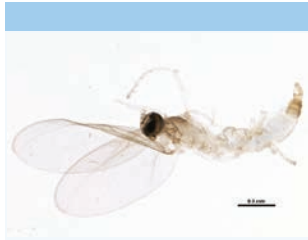
[Lateral]
Cynomya mortuorum
BIN URI: BOLD:AAB0868



[Lateral]
Cecidomyiidae
BIN URI: BOLD:AAH3617



[Lateral]
Cecidomyiidae
BIN URI: BOLD:ACC5395



[Lateral]
Cecidomyiidae
BIN URI: BOLD:ACP7913



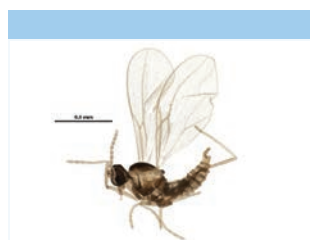
[Lateral]
Cecidomyiidae
BIN URI: BOLD:ACD1261



[Lateral]
Cecidomyiidae
BIN URI: BOLD:ACB9174



[Lateral]
Cecidomyiidae
BIN URI: BOLD:ABV0448



[Lateral]
Cecidomyiidae
BIN URI: BOLD:ACX8317



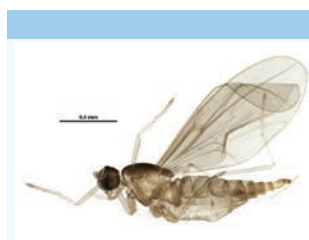
[Lateral]
Cecidomyiidae
BIN URI: BOLD:ACR0269



[Lateral]
Cecidomyiidae
BIN URI: BOLD:AAV5622



[Lateral]
Cecidomyiidae
BIN URI: BOLD:ACX9923



[Lateral]
Cecidomyiidae
BIN URI: BOLD:ACX9010



[Lateral]
Cecidomyiidae
BIN URI: BOLD:ACI6916



[Lateral]
Chamaemyiidae
BIN URI: BOLD:AAG6951



[Lateral]
Chaoboridae
BIN URI: BOLD:ACI7387



[Lateral]
Bryophaenocladus sp. 8ES
BIN URI: BOLD:AAG1021



[Lateral]
Gymnometriocnemus
BIN URI: BOLD:ACC8307



[Lateral]
Chironomidae
BIN URI: BOLD:AAG1019



[Lateral]
Diptera
BIN URI: BOLD:ACI3270



[Lateral]
Orthocladiinae
BIN URI: BOLD:ACN2260



[Lateral]
Medetera sp. SEB5
BIN URI: BOLD:ACA1124



[Lateral]
Dolichopodidae
BIN URI: BOLD:ACH2821



[Lateral]
Bicellaria
BIN URI: BOLD:ACY3618



[Lateral]
Limoniidae
BIN URI: BOLD:ACI4059



[Lateral]
Coenosia pilosissima
BIN URI: BOLD:AAP6478



[Lateral]
Coenosia
BIN URI: BOLD:ACX5946



[Lateral]
Helina depuncta
BIN URI: BOLD:AAG1711



[Lateral]
Helina
BIN URI: BOLD:ACG5222



[Lateral]
Helina evecta
BIN URI: BOLD:AAC2498



[Lateral]
Diptera
BIN URI: BOLD:AAH7146



[Lateral]
Sciaridae
BIN URI: BOLD:ACR4350



[Lateral]
Bradysia vagans
BIN URI: BOLD:AAM9252



[Lateral]
Sciaridae
BIN URI: BOLD:ACP9604



[Lateral]
Sciaridae
BIN URI: BOLD:ACP9073



[Lateral]
Sciaridae
BIN URI: BOLD:ACB9102



[Lateral]
Sciaridae
BIN URI: BOLD:ACS7465



[Lateral]
Sciaridae
BIN URI: BOLD:ACX1996



[Lateral]
Sciaridae
BIN URI: BOLD:ACS9618



[Lateral]
Sciaridae
BIN URI: BOLD:ACP7943



[Lateral]
Sciaridae
BIN URI: BOLD:AAP6422



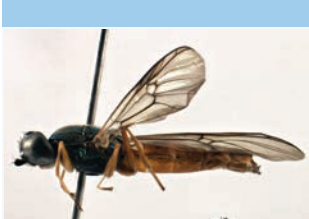
[Lateral]
Sciaridae
BIN URI: BOLD:ACX7823



[Lateral]
Sciaridae
BIN URI: BOLD:ACS7610



[Lateral]
Sciaridae
BIN URI: BOLD:AAP6472



[Lateral]
Sargus bipunctatus
BIN URI: BOLD:ACI9008



[Lateral]
Chrysotoxum sp. 6G
BIN URI: BOLD:AAA8852



[Lateral]
Syrphus torvus
BIN URI: BOLD:AAC6088



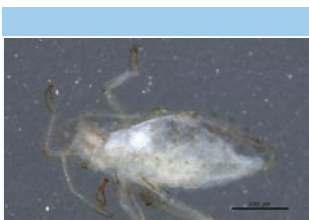
[Lateral]
Tipula paludosa
BIN URI: BOLD:AAE7386



[Lateral]
Limoniidae
BIN URI: BOLD:ACY3619



[Lateral]
Aleyrodidae
BIN URI: BOLD:ACC4360



[Lateral]
Anoecia fulviabdominalis
BIN URI: BOLD:AAH2871



[Dorsal]
Aphis varians
BIN URI: BOLD:AAA6378



[Lateral]
Callipterinella
BIN URI: BOLD:ACB2802



[Lateral]
Capitophorus elaeagni
BIN URI: BOLD:AAE3015



[Lateral]
Philaenus spumarius
quadrimaculatus
BIN URI: BOLD:AAB1850



[Dorsal]
Alebra
BIN URI: BOLD:ACR2547



[Dorsal]
Hemiptera
BIN URI: BOLD:AAO8340



[Lateral]
Draeculacephala borealis
BIN URI: BOLD:AAG8686



[Dorsal]
Erythridula
BIN URI: BOLD:ACU7199



[Lateral]
Erythroneura
BIN URI: BOLD:ACX8387



[Dorsal]
Ribautiana debilis
BIN URI: BOLD:ACC4476



[Dorsal]
Typhlocyba
BIN URI: BOLD:ACP7762



[Dorsal]
Cicadellidae
BIN URI: BOLD:ACJ8944



[Dorsal]
Lygus
BIN URI: BOLD:ABZ1405



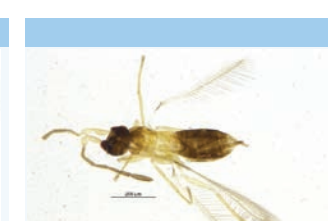
[Lateral]
Aphidius
BIN URI: BOLD:ACF4786



[Lateral]
Braconidae
BIN URI: BOLD:ACX8113



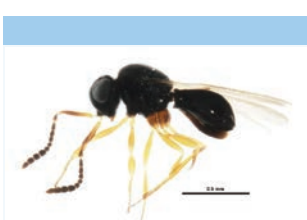
[Lateral]
Alaptus
BIN URI: BOLD:ACI9987



[Lateral]
Anagrus
BIN URI: BOLD:ABZ2703



[Lateral]
Myrmaridae
BIN URI: BOLD:ACK0262



[Lateral]
Telenomus
BIN URI: BOLD:ABA5957



[Lateral]
Telenomus
BIN URI: BOLD:AAM7440



[Lateral]
Telenomus
BIN URI: BOLD:ACX1641



[Lateral]
Platygastridae
BIN URI: BOLD:AAZ4458



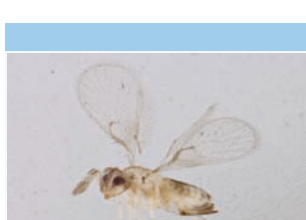
[Lateral]
Platygastridae
BIN URI: BOLD:ACX3844



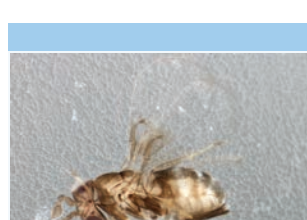
[Lateral]



[Lateral]



[Lateral]



[Lateral]



[Dorsal]



[Dorsal]

Leptacis
BIN URI: BOLD:AAU8358



[Dorsal]

Chionodes
BIN URI: BOLD:AAH4347

Torymidae
BIN URI: BOLD:ACJ0334



[Lateral]

Valenzuela flavidus□
BIN URI: BOLD:AAH3228

Trichogramma
BIN URI: BOLD:ACM0036



[Lateral]

Psocoptera
BIN URI: BOLD:ABA6163

Trichogrammatidae
BIN URI: BOLD:ACC6467



[Lateral]

Valenzuela
BIN URI: BOLD:ACR3866

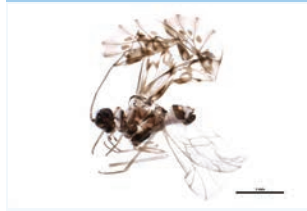
Argyresthia goedartella
BIN URI: BOLD:ABY5351



[Lateral]

Psocoptera
BIN URI: BOLD:AAN8452

Eudonia lugubralis
BIN URI: BOLD:AAA1518



[Lateral]

Psocidae
BIN URI: BOLD:ACH4727



[Lateral]

Psocoptera
BIN URI: BOLD:AAP4627



[Lateral]

Psocoptera
BIN URI: BOLD:ACB0984



[Dorsal]

Cerobasis guestfalica
BIN URI: BOLD:ACX5665



[Lateral]

Limnephilus nogus
BIN URI: BOLD:AAJ2663



[Lateral]

Limnephilus
BIN URI: BOLD:AAF5725



[Lateral]

Limnephilus lopho
BIN URI: BOLD:AAA4225