

School Malaise Trap Program

Species Image Library

The images of the species collected in your Malaise trap are shown below. A single representative for each species was selected to be photographed; in some cases, only a damaged specimen was available.

Re-render images: per row

300 Records Per Page - Pages: 1



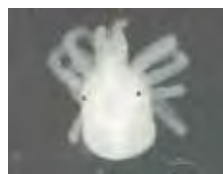
[Dorsal]
Larinioides patagiatus
BIN URI: BOLD:AAA3681



[Dorsal]
Tetragnatha laboriosa
BIN URI: BOLD:AAA6381



[Dorsal]
Cheiroseius
BIN URI: BOLD:ACE1640



[Dorsal]
Anystidae
BIN URI: BOLD:ABW2639



[Lateral]
Entomobrya sp.
BIN URI: BOLD:AAA7249



[Lateral]
Anthicus
BIN URI: BOLD:ABX0569



[Dorsal]
Dicheirotichus cognatus
BIN URI: BOLD:AAV5222



[Lateral]
Phyllotreta striolata
BIN URI: BOLD:AAP7016



[Lateral]
Phyllotreta albionica
BIN URI: BOLD:AAH0255



[Dorsal]
Coccinella septempunctata
BIN URI: BOLD:AAA8933



[Dorsal]
Hippodamia tredecimpunctata
BIN URI: BOLD:AAX1229



[Dorsal]
Stethorus punctillum
BIN URI: BOLD:AA6149



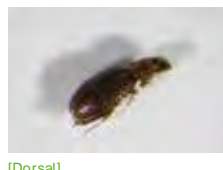
[Dorsal]
Cryptophagus
BIN URI: BOLD:ABX4786



[Lateral]
Tychius picirostris
BIN URI: BOLD:AAP7027



[Lateral]
Curculionidae
BIN URI: BOLD:ACP9480



[Dorsal]
Corticaria serrata
BIN URI: BOLD:AAO0421



[Lateral]
Corticaria
BIN URI: BOLD:ACD4236



[Dorsal]
Cyphon laevipennis
BIN URI: BOLD:AAG3633



[Lateral]
Sepsidophilus marshami
BIN URI: BOLD:AA9241



[Lateral]
Anthomyiidae
BIN URI: BOLD:AAG2453



[Lateral]
Bibio longipes
BIN URI: BOLD:AAW3399



[Dorsal]
Cecidomyiidae
BIN URI: BOLD:AAP9022



[Lateral]
Ceratopogonidae
BIN URI: BOLD:AA95148



[Lateral]
Ceratopogonidae
BIN URI: BOLD:ACF3277



[Lateral]
Cricotopus
BIN URI: BOLD:AAP5920



[Lateral]
Chironomidae
BIN URI: BOLD:AAP5133



[Lateral]
Cricotopus
BIN URI: BOLD:ACP8284



[Lateral]
Chironomidae
BIN URI: BOLD:AAG1004



[Lateral]
Chironomidae
BIN URI: BOLD:ABU5525



[Lateral]
Chironomidae
BIN URI: BOLD:ACG3299



[Lateral]
Orthocladius
BIN URI: BOLD:ACP9504



[Dorsal]
Chironomidae
BIN URI: BOLD:AAN8989



[Lateral]
Chironomidae
BIN URI: BOLD:ACB0946



[Lateral]
Smittia
BIN URI: BOLD:AAB0377



[Lateral]
Chironomidae
BIN URI: BOLD:AAG0920



[Lateral]
Tanypodinae
BIN URI: BOLD:ACP8795



[Lateral]
Chloropidae
BIN URI: BOLD:AAH4148



[Lateral]
Elaeoptera sibirica
BIN URI: BOLD:AAH4208



[Lateral]
Chloropidae
BIN URI: BOLD:AAV6119



[Ventral]
Siphonella oscinina
BIN URI: BOLD:AAG1515



[Lateral]
Thaumatomyia glabra
BIN URI: BOLD:AAH4135



[Dorsal]
Culiseta
BIN URI: BOLD:AAC9132



[Lateral]
Ephyridae
BIN URI: BOLD:AAG2754



[Lateral]
Heleomyzidae
BIN URI: BOLD:AAG0460



[Dorsal]
Platypalpus juvenis complex sp.
JMC3
BIN URI: BOLD:AAF9793



[Lateral]
Lauxaniidae
BIN URI: BOLD:AAP6482



[Lateral]
Dicranomyia
BIN URI: BOLD:AAI1345



[Lateral]
Lonchoptera
BIN URI: BOLD:AAG9974



[Lateral]
Helina sp.
BIN URI: BOLD:AAC2498



[Lateral]
Muscidae
BIN URI: BOLD:AAB8818



[Lateral]
Mycetophilidae
BIN URI: BOLD:ACC8936



[Lateral]
Mycetophilidae
BIN URI: BOLD:AAP2525



[Lateral]
Mycetophilidae
BIN URI: BOLD:AAU4918



[Lateral]
Phoridae
BIN URI: BOLD:ACB6729



[Lateral]
Phoridae
BIN URI: BOLD:AAG3255



[Lateral]
Phoridae
BIN URI: BOLD:ACI3059



[Lateral]
Psychodidae
BIN URI: BOLD:AAO8538



[Lateral]
Sciaridae
BIN URI: BOLD:AAH3941



[Lateral]
Scatopsiara
BIN URI: BOLD:AAH3920



[Lateral]
Sciaridae
BIN URI: BOLD:AAL7869



[Lateral]
Sciaridae
BIN URI: BOLD:ABA6488



[Lateral]
Sciaridae
BIN URI: BOLD:AAM9255



[Lateral]
Sciaridae
BIN URI: BOLD:AAP6465



[Lateral]
Sphaerozeridae
BIN URI: BOLD:AAG7277



[Lateral]
Sphaerozeridae
BIN URI: BOLD:ACP7599



[Lateral]
Microchrysa polita
BIN URI: BOLD:AAN6506



[Lateral]
Syrphidae
BIN URI: BOLD:AAB2384



[Dorsal]
Baetis tricaudatus
BIN URI: BOLD:AAL5544



[Dorsal]
Elastostethus cruciatus
BIN URI: BOLD:AAF5398



[Dorsal]
Acyrtosiphon pisum
BIN URI: BOLD:AAB1787



[Lateral]
Capitophorus elaeagni
BIN URI: BOLD:AAE3015



[Lateral]
Nearctaphis sensoriata
BIN URI: BOLD:AAG3602



[Lateral]
Phorodon humuli
BIN URI: BOLD:AAH8366



[Dorsal]
Rhopalosiphum cerasifoliae
BIN URI: BOLD:AAB5408



[Dorsal]
Smynthuroides betae
BIN URI: BOLD:AAE1380



[Lateral]
Amblysellus dorstii
BIN URI: BOLD:ACD9105



[Dorsal]
Ceratagallia sanguinolenta
BIN URI: BOLD:ACF6995



[Lateral]
Dikraneura
BIN URI: BOLD:AAV0227



[Lateral]
Hemiptera
BIN URI: BOLD:AAH5445



[Lateral]
Hemiptera
BIN URI: BOLD:AAV0259



[Lateral]
Macrosteles quadrilineatus
BIN URI: BOLD:AAA9422



[Lateral]
Nysius groenlandicus
BIN URI: BOLD:ACE3366



[Dorsal]
Lygus lineolaris
BIN URI: BOLD:AAA5803



[Dorsal]
Lygus plagiatus
BIN URI: BOLD:ACF4388



[Lateral]
Nabis americoferus
BIN URI: BOLD:AAB8143



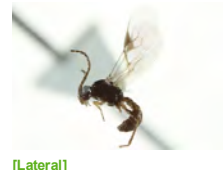
[Dorsal]
Braconidae
BIN URI: BOLD:ACI6817



[Lateral]
Aphidiinae
BIN URI: BOLD:AAA4188



[Lateral]
Cotesia yakutatensis
BIN URI: BOLD:ABZ4485



[Lateral]
Lysiphlebus
BIN URI: BOLD:AAG1226



[Lateral]
Praon
BIN URI: BOLD:ACP8498



[Lateral]
Braconidae
BIN URI: BOLD:ACN9016



[Lateral]
Braconidae
BIN URI: BOLD:ACP8405



[Lateral]
Hymenoptera
BIN URI: BOLD:AAU8584



[Lateral]
Hymenoptera
BIN URI: BOLD:AAP6708



[Lateral]
Eulophidae
BIN URI: BOLD:ACC5995



[Lateral]
Cynipidae
BIN URI: BOLD:ACC6912



[Lateral]
Cynipidae
BIN URI: BOLD:AAU9459



[Lateral]
Formicidae
BIN URI: BOLD:AAI1292



[Lateral]
Myrmica
BIN URI: BOLD:AAI3346



[Lateral]
Barycnemis gravipes
BIN URI: BOLD:AAC0868



[Lateral]
Diadromus subtilicornis
BIN URI: BOLD:AAZ7721



[Lateral]
Hymenoptera
BIN URI: BOLD:AAA6280



[Lateral]
Ichneumon discoensis
BIN URI: BOLD:ACE9045



[Lateral]
Mesochorus agilis
BIN URI: BOLD:AAG9511



[Lateral]
Gonatocerus
BIN URI: BOLD:AAG1488



[Lateral]
Platygastriidae
BIN URI: BOLD:AAG7883



[Lateral]
Telenomus
BIN URI: BOLD:ACM1917



[Lateral]
Telenomus
BIN URI: BOLD:AAU9275



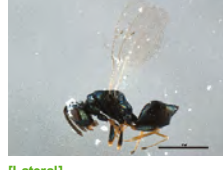
[Lateral]
Platygastriidae
BIN URI: BOLD:AAU8342



[Lateral]
Platygastriidae
BIN URI: BOLD:AAZ4474



[Lateral]
Platygastriinae
BIN URI: BOLD:ACD3193



[Lateral]
Pteromalidae
BIN URI: BOLD:ACJ3592



[Lateral]
Vespa germanica
BIN URI: BOLD:AAG9055



[Lateral]
Vespa pensylvanica
BIN URI: BOLD:AAG8042



[Lateral]
Sunira bicolorago
BIN URI: BOLD:AAA4426



[Dorsal]
Plutella xylostella
BIN URI: BOLD:AAA1513



[Dorsal]
Acleris comana
BIN URI: BOLD:ABZ7431



[Lateral]
Micromus angulatus
BIN URI: BOLD:AAM8204



[Lateral]
Psocoptera
BIN URI: BOLD:ACM5405



[Lateral]
Limnephilus sericeus
BIN URI: BOLD:AAA7041