

School Malaise Trap Program

Species Image Library

The images of the species collected in your Malaise trap are shown below. A single representative for each species was selected to be photographed; in some cases, only a damaged specimen was available.

Re-render images: per row

300 Records Per Page - Pages: 1



[Dorsal]
Hypselistes florens
BIN URI: BOLD:AAB4233



[Dorsal]
Pardosa xerampelina
BIN URI: BOLD:AAB3889



[Dorsal]
Tetragnatha versicolor
BIN URI: BOLD:AAB7995



[Dorsal]
Oribatulidae
BIN URI: BOLD:ACF9074



[Dorsal]
Anystidae
BIN URI: BOLD:ACP7674



[Dorsal]
Anystidae
BIN URI: BOLD:ACO3990



[Dorsal]
Anystidae
BIN URI: BOLD:AAAN688



[Dorsal]
Abrolophus
BIN URI: BOLD:ABW2691



[Dorsal]
Lepidocyrtus
BIN URI: BOLD:ACM2009



[Lateral]
Orchesella cincta
BIN URI: BOLD:AAA6611



[Lateral]
Paria fragariae
BIN URI: BOLD:ACF6671



[Dorsal]
Galerucella pusilla
BIN URI: BOLD:AAL2945



[Dorsal]
Orthoperus scutellaris
BIN URI: BOLD:AAU7040



[Lateral]
Aeolus mellillus
BIN URI: BOLD:AAP6369



[Dorsal]
Corticarina
BIN URI: BOLD:AAH0256



[Lateral]
Cyphon obscurus
BIN URI: BOLD:AAH0074



[Dorsal]
Trixagus carinicollis
BIN URI: BOLD:AAAN6148



[Dorsal]
Trixagus
BIN URI: BOLD:ABW2869



[Dorsal]
Forficula auricularia-A
BIN URI: BOLD:AAG9897



[Lateral]
Cerodontha muscina
BIN URI: BOLD:AAF1051



[Lateral]
Chromatomyia
BIN URI: BOLD:ACP8542



[Lateral]
Phytomyza crassiset
BIN URI: BOLD:AAL4268



[Lateral]
Agromyzidae
BIN URI: BOLD:AAG4775



[Lateral]
Diptera
BIN URI: BOLD:AAA3453



[Lateral]
Anthomyiidae
BIN URI: BOLD:AAG2460



[Lateral]
Aulacigaster
BIN URI: BOLD:ABV3853



[Lateral]
Cecidomyiidae
BIN URI: BOLD:ACL7225



[Lateral]
Cecidomyiidae
BIN URI: BOLD:ACO2639



[Lateral]
Cecidomyiidae
BIN URI: BOLD:AAAN5205



[Lateral]
Cecidomyiidae
BIN URI: BOLD:ACP8172



[Lateral]
Cecidomyiidae
BIN URI: BOLD:AA5250



[Lateral]
Cecidomyiidae
BIN URI: BOLD:AA5268



[Lateral]
Cecidomyiidae
BIN URI: BOLD:AA5283



[Lateral]
Cecidomyiidae
BIN URI: BOLD:AA5355



[Lateral]
Ceratopogonidae
BIN URI: BOLD:AAG6486



[Lateral]
Bryophaenocladus sp. 8ES
BIN URI: BOLD:AAG1021



[Lateral]
Chironomus cf. decorus
BIN URI: BOLD:AAB7030



[Lateral]
Dicrotenidipes
BIN URI: BOLD:AAG5423



[Lateral]
Microtenidipes pedellus
BIN URI: BOLD:AAE0707



[]
Paratanytarsus
BIN URI: BOLD:AAV6213



[Lateral]
Procladius
BIN URI: BOLD:AAG5513



[Lateral]
Tanytarsus
BIN URI: BOLD:AAP5870



[Lateral]
Tanytarsus guerlus
BIN URI: BOLD:AAC4525



[Lateral]
Chironomidae
BIN URI: BOLD:AAG0920



[Lateral]
Chironomidae
BIN URI: BOLD:AA5342



[Lateral]
Chironomidae
BIN URI: BOLD:ACE0699



[Lateral]
Chironominae
BIN URI: BOLD:ACK7314



[Lateral]
Thaumatomyia glabra
BIN URI: BOLD:ABY9688



[Lateral]
Thaumatomyia
BIN URI: BOLD:ABY9689



[Lateral]
Aedes vexans
BIN URI: BOLD:AAA7067



[Lateral]
Culicidae
BIN URI: BOLD:ABY7666



[Lateral]
Dolichopodidae
BIN URI: BOLD:AAG9713



[Lateral]
Dolichopodidae
BIN URI: BOLD:AAG6929



[Lateral]
Dolichopodidae
BIN URI: BOLD:AAM6787



[Lateral]
Dolichopodidae
BIN URI: BOLD:AA5538



[Lateral]
Ephydriidae
BIN URI: BOLD:AAG2762



[Lateral]
Heleomyzidae
BIN URI: BOLD:AAG0461



[Lateral]
Empididae
BIN URI: BOLD:AAF9771



[Lateral]
Tachypeza fenestrata
BIN URI: BOLD:AAF9887



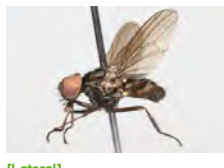
[Lateral]
Hybotidae
BIN URI: BOLD:AAF9866



[Lateral]
Metalimnobia quadrimaculata
cinctipes
BIN URI: BOLD:AAK8831



[Lateral]
Limonia triocellata
BIN URI: BOLD:AAK8834



[Lateral]
Muscidae
BIN URI: BOLD:AAG1780



[Lateral]
Coenosia tigrina
BIN URI: BOLD:AAB5609



[Lateral]
Muscidae
BIN URI: BOLD:AAG1711



[Lateral]
Muscina levida
BIN URI: BOLD:AAB8817



[Lateral]
Muscidae
BIN URI: BOLD:AAM9107



[Lateral]
Muscidae
BIN URI: BOLD:ACE9475



[Lateral]
Mycetophilidae
BIN URI: BOLD:ABV9018



[Lateral]
Phoridae
BIN URI: BOLD:AAG3236



[Lateral]
Phoridae
BIN URI: BOLD:AAG3248



[Lateral]
Megaselia
BIN URI: BOLD:AAG3274



[Lateral]
Phoridae
BIN URI: BOLD:ABU5529



[Lateral]
Phoridae
BIN URI: BOLD:AAG3275



[Lateral]
Phoridae
BIN URI: BOLD:AAU6533



[Lateral]
Phoridae
BIN URI: BOLD:AAM7996



[Lateral]
Phoridae
BIN URI: BOLD:AAN8684



[Lateral]
Phoridae
BIN URI: BOLD:AAG3342



[Dorsal]
Phoridae
BIN URI: BOLD:AAU6600



[Lateral]
Phoridae
BIN URI: BOLD:AAU8534



[Lateral]
Psychodidae
BIN URI: BOLD:ABV1314



[Lateral]
Psychodidae
BIN URI: BOLD:AAZ5592



[Lateral]
Bradyia difformis
BIN URI: BOLD:AAV1295



[Lateral]
Sciaridae
BIN URI: BOLD:AAM9252



[Lateral]
Leptosciarella scutellata
BIN URI: BOLD:ACD1218



[Lateral]
Sciaridae
BIN URI: BOLD:ACE3123



[Lateral]
Sciaridae
BIN URI: BOLD:AAN6447



[Lateral]
Sciaridae
BIN URI: BOLD:ABA6407



[Lateral]
Sciaridae
BIN URI: BOLD:AAP6465



[Lateral]
Sciaridae
BIN URI: BOLD:ABU5521



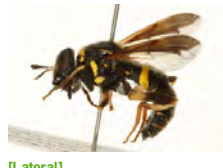
[Lateral]
Sciaridae
BIN URI: BOLD:AAM9255



[Lateral]
Sciaridae
BIN URI: BOLD:ABU5520



[Lateral]
Syrphidae
BIN URI: BOLD:AAB2384



[Lateral]
Spilomyia sayi
BIN URI: BOLD:AAC8399



[Lateral]
Baetis intercalaris
BIN URI: BOLD:AAM2026



[Lateral]
Acanalonia conica
BIN URI: BOLD:AAJ5015



[Lateral]
Aleyrodidae
BIN URI: BOLD:AAZ8500



[Lateral]
Aleyrodidae
BIN URI: BOLD:AAZ8501



[Lateral]
Aphis glycines
BIN URI: BOLD:AAB7938



[Dorsal]
Macrosiphum euphorbiae
BIN URI: BOLD:AAA6213



[Lateral]
Aphrophora alni
BIN URI: BOLD:AAZ2091



[Lateral]
Dikraneura
BIN URI: BOLD:AAZ2090



[Lateral]
Empoasca
BIN URI: BOLD:AAG2873



[Lateral]
Erythroneura elegans
BIN URI: BOLD:ACE8809



[Lateral]
Erythroneura vitifex
BIN URI: BOLD:AAV6742



[Lateral]
Erythroneura vulnerata
BIN URI: BOLD:ABA5772



[Lateral]
Graphocephala fennahi
BIN URI: BOLD:AAG2909



[Lateral]
Orientus ishidae
BIN URI: BOLD:ABX2622



[Lateral]
Hemiptera
BIN URI: BOLD:AAG2898



[Lateral]
Stragania apicalis
BIN URI: BOLD:ABA3401



[Lateral]
Clastoptera obtusa
BIN URI: BOLD:AAG8823



[Dorsal]
Pilophorus neoclavatus
BIN URI: BOLD:ACB2617



[Lateral]
Aphidiinae
BIN URI: BOLD:AAK2038



[Lateral]
Ephedrus
BIN URI: BOLD:ACF5763



[Lateral]
Glyptapanteles sp.
BIN URI: BOLD:AAA4781



[Lateral]
Hymenoptera
BIN URI: BOLD:AAU8209



[Lateral]
Hymenoptera
BIN URI: BOLD:AAU8592



[Lateral]
Hymenoptera
BIN URI: BOLD:AAG1429



[Lateral]
Diapriidae
BIN URI: BOLD:AAU8449



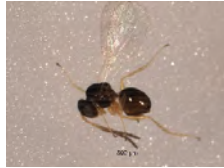
[Lateral]
Hymenoptera
BIN URI: BOLD:ABA1079



[Lateral]
Hymenoptera
BIN URI: BOLD:AAA7203



[Lateral]
Hymenoptera
BIN URI: BOLD:ACP8818



[Lateral]
Figitidae
BIN URI: BOLD:AAU8458



[Lateral]
Cynipidae
BIN URI: BOLD:ACM7083



[Lateral]
Amblyopone
BIN URI: BOLD:AAD4306



[Lateral]
Camponotus pennsylvanicus
BIN URI: BOLD:AAA9461



[Dorsal]
Formicidae
BIN URI: BOLD:AAF0890



[Lateral]
Hymenoptera
BIN URI: BOLD:AAU8600



[Lateral]
Hymenoptera
BIN URI: BOLD:AAC2392



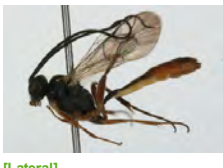
[Lateral]
Prenolepis imparis
BIN URI: BOLD:AAC1302



[Dorsal]
Agapostemon virescens
BIN URI: BOLD:AAB2708



[Lateral]
Cubocephalus septentrionalis
BIN URI: BOLD:ACC4157



[Lateral]
Cymodusa distincta
BIN URI: BOLD:ABZ4363



[Lateral]
Ichneumonidae
BIN URI: BOLD:AAG5788



[Lateral]
Lissonota coracina
BIN URI: BOLD:AAG7794



[Lateral]
Hymenoptera
BIN URI: BOLD:AAU8441



[Lateral]
Mesochorus americanus
BIN URI: BOLD:AAZ6795



[Lateral]
Orthocentrinae
BIN URI: BOLD:AAG0956



[Lateral]
Hymenoptera
BIN URI: BOLD:AAU8604



[Lateral]
Hymenoptera
BIN URI: BOLD:AAP6689



[Lateral]
Pimplinae
BIN URI: BOLD:AAG0381



[Lateral]
Hymenoptera
BIN URI: BOLD:AAA5524



[Lateral]
Ichneumonidae
BIN URI: BOLD:AAN8204



[Lateral]
Myrmidae
BIN URI: BOLD:ABV9379



[Lateral]
Anagrus
BIN URI: BOLD:ACE0249



[Lateral]
Ooctonus
BIN URI: BOLD:AAZ9180



[Lateral]
Myrmidae
BIN URI: BOLD:ABW3187



[Lateral]
Hymenoptera
BIN URI: BOLD:ABX2601



[Lateral]
Myrmidae
BIN URI: BOLD:ACE1230



[Lateral]
Platygastriidae
BIN URI: BOLD:AAG7883



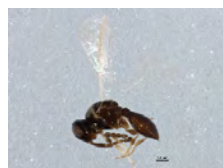
[Lateral]
Synopeas
BIN URI: BOLD:ACK2606



[Dorsal]
Platygastriidae
BIN URI: BOLD:AAG7886



[Lateral]
Platygastriidae
BIN URI: BOLD:AAU8342



[Lateral]
Platygastriidae
BIN URI: BOLD:ABW3192



[Lateral]
Scelioninae
BIN URI: BOLD:ACK8395



[Dorsal]
Pteromalidae
BIN URI: BOLD:AAZ3284



[Lateral]
Pteromalidae
BIN URI: BOLD:AAU9270



[Lateral]
Vespa germanica
BIN URI: BOLD:AAG9055



[Dorsal]
Chionodes obscurusella
BIN URI: BOLD:AAA4439



[Dorsal]
Syncopacma
BIN URI: BOLD:AAF9988



[Dorsal]
Agnorisma badinodis
BIN URI: BOLD:ACP7557



[Dorsal]
Emmelina monodactyla
BIN URI: BOLD:AAA3882



[Dorsal]
Psocoptera
BIN URI: BOLD:AAM8931



[Lateral]
Psocoptera
BIN URI: BOLD:AAN8450



[Dorsal]
Psocoptera
BIN URI: BOLD:ACB0984



[Lateral]
Psocoptera
BIN URI: BOLD:ACE6318



[Lateral]
Psocoptera
BIN URI: BOLD:AAP4625



[Lateral]
Ceratopsyche sparna
BIN URI: BOLD:AAA2528



[Lateral]
Ceratopsyche morosa
BIN URI: BOLD:AAA3679