

School Malaise Trap Program

Species Image Library

The images of the species collected in your Malaise trap are shown below. A single representative for each species was selected to be photographed; in some cases, only a damaged specimen was available.

Re-render images: per row

300 Records Per Page - Pages: 1



[Dorsal]
Grammonota kincaidi
BIN URI: BOLD:AAP4998



[Dorsal]
Tachygyna vancouverana
BIN URI: BOLD:ACK8106



[Dorsal]
Arachnida
BIN URI: BOLD:ACC9616



[Dorsal]
Blattisociidae
BIN URI: BOLD:ACJ0472



[Dorsal]
Blattisociidae
BIN URI: BOLD:ACC0536

IMAGE NOT AVAILABLE

Mesostigmata
BIN URI: BOLD:ACP8527



[Dorsal]
Bourletiellidae
BIN URI: BOLD:AAN4906



[Lateral]
Collembola
BIN URI: BOLD:AAN6521



[Dorsal]
Philorhizus melanocephalus
BIN URI: BOLD:AAO4818



[Dorsal]
Chilocorus stigma
BIN URI: BOLD:ACA6340



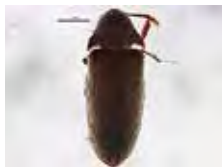
[Dorsal]
Coccinellidae
BIN URI: BOLD:ACP9704



[Lateral]
Corticaria
BIN URI: BOLD:AAN6154



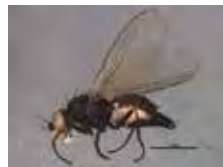
[Dorsal]
Cartodere nodifer
BIN URI: BOLD:AAO0516



[Dorsal]
Pactopus homii
BIN URI: BOLD:ACC3034



[Lateral]
Agromyziidae
BIN URI: BOLD:AAD1945



[Lateral]
Chromatomyia
BIN URI: BOLD:ACP9372



[Lateral]
Liriomyza
BIN URI: BOLD:ACP7972



[Lateral]
Anthomyiidae
BIN URI: BOLD:ACF2899



[Lateral]
Cecidomyiidae
BIN URI: BOLD:ACP7913



[Lateral]
Cecidomyiidae
BIN URI: BOLD:ABV1332



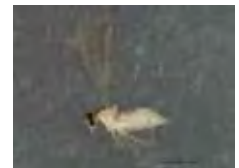
[Lateral]
Cecidomyiidae
BIN URI: BOLD:ACB9174



[Lateral]
Cecidomyiidae
BIN URI: BOLD:ACK3803



[Lateral]
Cecidomyiidae
BIN URI: BOLD:AAM6129



[Lateral]
Cecidomyiidae
BIN URI: BOLD:AAH3720



[Lateral]
Cecidomyiidae
BIN URI: BOLD:ACP7920



[Lateral]
Cecidomyiidae
BIN URI: BOLD:ACC8131



[Lateral]
Cecidomyiidae
BIN URI: BOLD:ACI6918



[Lateral]
Cecidomyiidae
BIN URI: BOLD:ACA8840



[Lateral]
Cecidomyiidae
BIN URI: BOLD:ACF0670



[Lateral]
Cecidomyiidae
BIN URI: BOLD:ACP7429



[Lateral]
Cecidomyiidae
BIN URI: BOLD:ACO2730



[Lateral]
Cecidomyiidae
BIN URI: BOLD:ACP8530



[Lateral]
Cecidomyiidae
BIN URI: BOLD:ACI6916



[Lateral]
Ceratopogonidae
BIN URI: BOLD:AAP9052



[Lateral]
Ceratopogonidae
BIN URI: BOLD:AAV5098



[Lateral]
Ceratopogonidae
BIN URI: BOLD:ACP9572



[Lateral]
Ceratopogonidae
BIN URI: BOLD:ACA3626



[Lateral]
Bryophaeocladus sp. 8ES
BIN URI: BOLD:AAG1021



[Lateral]
Micropspectra polita
BIN URI: BOLD:AAC4403



[Lateral]
Phaenopsectra
BIN URI: BOLD:ACI3107



[Lateral]
Smittia edwardsi
BIN URI: BOLD:AAF4817



[Lateral]
Smittia sp. 16ES
BIN URI: BOLD:AAB0375



[Lateral]
Chironomidae
BIN URI: BOLD:AAM7064



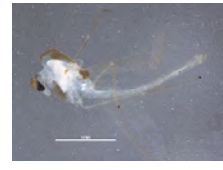
[Lateral]
Chironomidae
BIN URI: BOLD:ACN4663



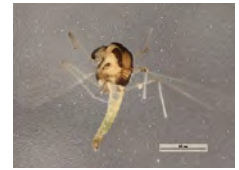
[Lateral]
Chironomidae
BIN URI: BOLD:ACI3270



[Dorsal]
Chironomidae
BIN URI: BOLD:AAN5393



[Lateral]
Chironominae
BIN URI: BOLD:AAL7306



[Dorsal]
Chironomidae
BIN URI: BOLD:AAV6024



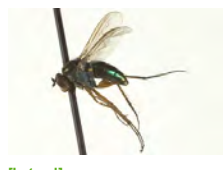
[Lateral]
Orthocladiinae
BIN URI: BOLD:ACP8936



[Lateral]
Orthocladiinae
BIN URI: BOLD:ACP8236



[Lateral]
Chloropidae
BIN URI: BOLD:AAN5659



[Lateral]
Dolichopus sp. SEB19
BIN URI: BOLD:ABW3657



[Lateral]
Medetera sp. SEB5
BIN URI: BOLD:ACA1124



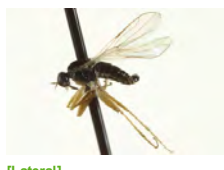
[Lateral]
Dolichopodidae
BIN URI: BOLD:ACP8633



[Lateral]
Drosophila
BIN URI: BOLD:AAG8493



[Lateral]
Neoplasta
BIN URI: BOLD:ACC5034



[Lateral]
Platypalpus sp. 19
BIN URI: BOLD:ABY3127



[Lateral]
Cheilitrichia cinerascens
BIN URI: BOLD:ABV4106



[Lateral]
Dicranomyia modesta
BIN URI: BOLD:AAI1352



[Lateral]
Diptera
BIN URI: BOLD:ACI8989



[Lateral]
Limonia nubeculosa
BIN URI: BOLD:AAI1355



[Lateral]
Limoniidae
BIN URI: BOLD:ACP9441



[Lateral]
Diptera
BIN URI: BOLD:ACI4059



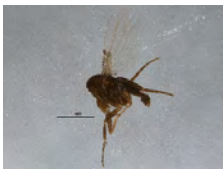
[Lateral]
Coenosia tigrina
BIN URI: BOLD:AAB5609



[Lateral]
Muscidae
BIN URI: BOLD:AAP6478



[Lateral]
Diptera
BIN URI: BOLD:ACG5222



[Lateral]
Phoridae
BIN URI: BOLD:ACM1802



[Lateral]
Phoridae
BIN URI: BOLD:AAU5646



[Lateral]
Phoridae
BIN URI: BOLD:AAP8728



[Lateral]
Psychodidae
BIN URI: BOLD:AAF9306



[Lateral]
Psychodidae
BIN URI: BOLD:AAP6387



[Lateral]
Psychodidae
BIN URI: BOLD:AAF9309



[Lateral]
Scathophagidae
BIN URI: BOLD:AAD0853



[Lateral]
Sciaridae
BIN URI: BOLD:AAH3939



[Lateral]
Sciaridae
BIN URI: BOLD:ACB9102



[Lateral]
Sciaridae
BIN URI: BOLD:AAN6447



[Lateral]
Sciaridae
BIN URI: BOLD:AAP8786



[Lateral]
Sciaridae
BIN URI: BOLD:AAV6412



[Lateral]
Sciaridae
BIN URI: BOLD:ACP9073



[Lateral]
Copomyza
BIN URI: BOLD:ACC1654



[Lateral]
Rachispoda
BIN URI: BOLD:ACP9471



[Lateral]
Rachispoda
BIN URI: BOLD:ACP9470



[Lateral]
Spelobia semioculata
BIN URI: BOLD:ABX6678



[Lateral]
Sphaeroceridae
BIN URI: BOLD:AAP6440



[Lateral]
Sphaeroceridae
BIN URI: BOLD:AAP3625



[Lateral]
Toxomerus marginatus
BIN URI: BOLD:AAA4277



[Lateral]
Tipula paludosa
BIN URI: BOLD:AAE7386



[Lateral]
Aleyrodidae
BIN URI: BOLD:ACI5425



[Dorsal]
Orius majusculus
BIN URI: BOLD:ABA5781



[Dorsal]
Anocia corni
BIN URI: BOLD:AAH2871



[Lateral]
Aulacorthum solani
BIN URI: BOLD:AAB2572



[Lateral]
Essigella
BIN URI: BOLD:ACC4249



[Lateral]
Hyadaphis passerinii
BIN URI: BOLD:ACE3923



[Dorsal]
Macrosiphum
BIN URI: BOLD:ACP8012



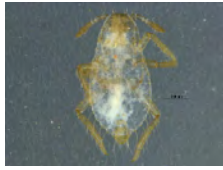
[Dorsal]
Pterocomma smithiae
BIN URI: BOLD:AAF5269



[Lateral]
Rhopalomyzus
BIN URI: BOLD:ACA4534



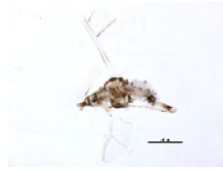
[Lateral]
Rhopalosiphum nymphaeae
BIN URI: BOLD:AAE3554



[Dorsal]
Tetraneura
BIN URI: BOLD:AAG3894



[Dorsal]
Tuberculatus annulatus
BIN URI: BOLD:AAD8407



[Lateral]
Tuberculatus querceus
BIN URI: BOLD:AAH2872



[Lateral]
Aphidinae
BIN URI: BOLD:ACP9206



[Lateral]
Calaphidinae
BIN URI: BOLD:AAH2873



[Dorsal]
Hemiptera
BIN URI: BOLD:AAO8340



[Lateral]
Empoasca decipiens
BIN URI: BOLD:AAV6741



[Lateral]
Eupteryx decemnotata
BIN URI: BOLD:ACN3029



[Dorsal]
Cicadellidae
BIN URI: BOLD:ACJ8944



[Dorsal]
Cicadellidae
BIN URI: BOLD:ACK8997



[Dorsal]
Cicadellidae
BIN URI: BOLD:ACC4476



[Lateral]
Psyllidae
BIN URI: BOLD:ACP7672



[Dorsal]
Aphelinidae
BIN URI: BOLD:ACL2193



[Lateral]
Aphelinidae
BIN URI: BOLD:ACP7367



[Lateral]
Aphidius ribis
BIN URI: BOLD:ACB8117



[Dorsal]
Braconidae
BIN URI: BOLD:ACE4721



[Lateral]
Dinotrema jft01
BIN URI: BOLD:AAA7636



[Lateral]
Alysiniinae
BIN URI: BOLD:ACI8307



[Lateral]
Alysiniinae
BIN URI: BOLD:AAN8138



[Lateral]
Hymenoptera
BIN URI: BOLD:AAU8585



[Lateral]
Cynipidae
BIN URI: BOLD:AAG8258



[Lateral]
Hymenoptera
BIN URI: BOLD:ACA8248



[Dorsal]
Diapriidae
BIN URI: BOLD:AAU8992



[Lateral]
Eulophidae
BIN URI: BOLD:ACN5333



[Lateral]
Hymenoptera
BIN URI: BOLD:ACJ0181



[Lateral]
Eulophidae
BIN URI: BOLD:AAU9365



[Lateral]
Hymenoptera
BIN URI: BOLD:AAO2130



[Lateral]
Lasius
BIN URI: BOLD:AAA9048



[Lateral]
Hemiteles similis
BIN URI: BOLD:ACL6893



[Lateral]
Megastylus
BIN URI: BOLD:ACE4234



[Lateral]
Megastylus jft01
BIN URI: BOLD:AAF3508



[Lateral]
Ichneumonidae
BIN URI: BOLD:AAU9739



[Lateral]
Cryptinae
BIN URI: BOLD:ACP7548



[Lateral]
Cryptinae
BIN URI: BOLD:AAH1608



[Lateral]
Anagrus
BIN URI: BOLD:AAZ5703



[Lateral]
Mymaridae
BIN URI: BOLD:ACP8597



[Lateral]
Mymaridae
BIN URI: BOLD:ACE1230



[Lateral]
Mymaridae
BIN URI: BOLD:ACI9987



[Lateral]
Mymaridae
BIN URI: BOLD:ACP9238



[Lateral]
Mymaridae
BIN URI: BOLD:ACP8404



[Lateral]
Telenomus
BIN URI: BOLD:ACI2826



[Lateral]
Platygasteridae
BIN URI: BOLD:AAU9072



[Lateral]
Platygasteridae
BIN URI: BOLD:AAG7990



[Lateral]
Telenomus
BIN URI: BOLD:AAU9340



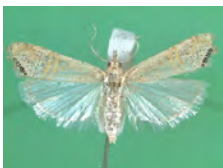
[Lateral]
Hymenoptera
BIN URI: BOLD:AAU8450



[Lateral]
Nasonia vitripennis
BIN URI: BOLD:AAB4240



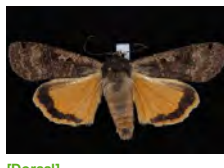
[Lateral]
Vesputa pensylvanica
BIN URI: BOLD:AAG8042



[Dorsal]
Euchromius ocella
BIN URI: BOLD:AAA5671



[Dorsal]
Agonopterix nervosa
BIN URI: BOLD:AAC1846



[Dorsal]
Noctua pronuba
BIN URI: BOLD:AAA2632



[Dorsal]
Epinotia emarginana
BIN URI: BOLD:AAC9102



[Lateral]
Valenzuela
BIN URI: BOLD:AAP2603



[Lateral]
Psocoptera
BIN URI: BOLD:AAZ6680



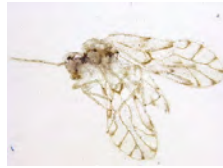
[Dorsal]
Psocoptera
BIN URI: BOLD:AAJ6687



[Dorsal]
Psocoptera
BIN URI: BOLD:ACB0984



[Lateral]
Psocoptera
BIN URI: BOLD:AAJ6685



[Lateral]
Psocoptera
BIN URI: BOLD:AAP2620



[Lateral]
Limnephilus nogus
BIN URI: BOLD:AAJ2663