

# School Malaise Trap Program

## Species Image Library

The images of the species collected in your Malaise trap are shown below. A single representative for each species was selected to be photographed; in some cases, only a damaged specimen was available.

Re-render images:  per row

300 Records Per Page - Pages: 1



[Dorsal]  
*Frontinella communis*  
BIN URI: BOLD:AAE0825



[Ventral]  
Ascidae  
BIN URI: BOLD:ABA5555



[Dorsal]  
Anystidae  
BIN URI: BOLD:ABW2639



[Dorsal]  
Anystidae  
BIN URI: BOLD:ABW5662



[Dorsal]  
*Phyllotreta striolata*  
BIN URI: BOLD:AAL5267



[Dorsal]  
Clambidae  
BIN URI: BOLD:ACI5300



[Lateral]  
*Enoclerus nigripes rufiventris*  
BIN URI: BOLD:AAU6970



[Dorsal]  
*Coccinella septempunctata*  
BIN URI: BOLD:AAA8933



[Dorsal]  
Coccinellidae  
BIN URI: BOLD:AAB5640



[Dorsal]  
*Nycteus testaceus*  
BIN URI: BOLD:AA6192



[Dorsal]  
*Elychnia corrusca*  
BIN URI: BOLD:AAF4976



[Dorsal]  
*Elychnia*  
BIN URI: BOLD:ACL8662



[Dorsal]  
*Tachyporus atriceps*  
BIN URI: BOLD:ABX2484



[Lateral]  
*Calycomyza majuscula*  
BIN URI: BOLD:AAV4861



[Lateral]  
*Cerodontha muscina*  
BIN URI: BOLD:AAF1051



[Lateral]  
Agromyza  
BIN URI: BOLD:ACP7396



[Lateral]  
Anisopodidae  
BIN URI: BOLD:AAL7534



[Lateral]  
*Sylvicola fenestralis*  
BIN URI: BOLD:AAG1996



[Lateral]  
Anthomyiidae  
BIN URI: BOLD:AAG2467



[Lateral]  
*Delia platyura*  
BIN URI: BOLD:AAG2511



[Lateral]  
Anthomyiidae  
BIN URI: BOLD:AAG2460



[Lateral]  
*Pegomya geniculata*  
BIN URI: BOLD:AAG2466



[Lateral]  
Anthomyiidae  
BIN URI: BOLD:AAG2461



[Lateral]  
Diptera  
BIN URI: BOLD:AAG6745



[Lateral]  
Cecidomyiidae  
BIN URI: BOLD:ACP9607



[Lateral]  
*Cricotopus vierriensis*  
BIN URI: BOLD:AAG1005



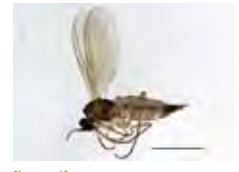
[Lateral]  
*Cricotopus*  
BIN URI: BOLD:ACP7915



[Lateral]  
Chironomidae  
BIN URI: BOLD:ABA4431



[Lateral]  
*Cricotopus* sp. 18ES  
BIN URI: BOLD:AAG0996



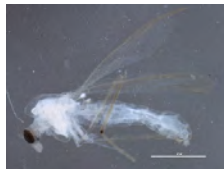
[Lateral]  
*Microspectra subletteorum*  
BIN URI: BOLD:AAF7088



[Lateral]  
Microtendipes pedellus  
BIN URI: BOLD:AAE0707



[Lateral]  
Chironomidae  
BIN URI: BOLD:ABV9025



[Lateral]  
Chironominae  
BIN URI: BOLD:AAH0040



[Lateral]  
Chironomidae  
BIN URI: BOLD:ABY2015



[Lateral]  
Orthocladiinae  
BIN URI: BOLD:ACP7679



[Lateral]  
Chironomidae  
BIN URI: BOLD:AAG0999



[Lateral]  
Chironomidae  
BIN URI: BOLD:ACC7822



[Lateral]  
Gaurax sp. TAW3  
BIN URI: BOLD:ACF5081



[Lateral]  
Siphonella oscinina  
BIN URI: BOLD:ACE8783



[Lateral]  
Thaumatomyia  
BIN URI: BOLD:ABY9689



[Lateral]  
Thaumatomyia glabra  
BIN URI: BOLD:AAH4135



[Lateral]  
Tricimba melancholica  
BIN URI: BOLD:ACJ6355



[Lateral]  
Dolichopodidae  
BIN URI: BOLD:AAG6929



[Lateral]  
Drosophilidae  
BIN URI: BOLD:AAE0232



[Lateral]  
Dryomyza anilis  
BIN URI: BOLD:AAC6974



[Lateral]  
Dryomyzidae  
BIN URI: BOLD:AAH0832



[Lateral]  
Empididae  
BIN URI: BOLD:ACB9136



[Lateral]  
Platypalpus  
BIN URI: BOLD:AAI2703



[Lateral]  
Platypalpus nr. albisetia  
BIN URI: BOLD:ACC4222



[Lateral]  
Homoneura phildephica  
BIN URI: BOLD:AAU4698



[Lateral]  
Homoneura pincerta  
BIN URI: BOLD:AAH3542



[Lateral]  
Dicranomyia frontalis  
BIN URI: BOLD:ABA5203



[Lateral]  
Discobola annulata  
BIN URI: BOLD:AAF4967



[Lateral]  
Tipulidae  
BIN URI: BOLD:AAU6544



[Lateral]  
Rhipidia lecontei  
BIN URI: BOLD:ABY8689



[Lateral]  
Muscidae  
BIN URI: BOLD:AAG1733



[Lateral]  
Muscidae  
BIN URI: BOLD:AAG1717



[Lateral]  
Muscidae  
BIN URI: BOLD:AAB8818



[Lateral]  
Muscidae  
BIN URI: BOLD:ACF1299



[Lateral]  
Mycetophilidae  
BIN URI: BOLD:AAG4898



[Lateral]  
Mycetophila fungorum  
BIN URI: BOLD:ACF2821



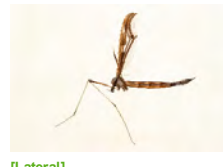
[Lateral]  
Mycomya  
BIN URI: BOLD:AAK8903



[Lateral]  
Sceptonia  
BIN URI: BOLD:AAG4967



[Lateral]  
Mycetophilidae  
BIN URI: BOLD:AAM8992



[Lateral]  
Tipulidae  
BIN URI: BOLD:ABX4909



[Lateral]  
Phoridae  
BIN URI: BOLD:AAG3236



[Lateral]  
Phoridae  
BIN URI: BOLD:ACP7558



[Lateral]  
Phoridae  
BIN URI: BOLD:AAH8700



[Lateral]  
Phoridae  
BIN URI: BOLD:AAM7996



[Lateral]  
Phoridae  
BIN URI: BOLD:AAU8534



[Lateral]  
Phoridae  
BIN URI: BOLD:ACB0987



[Lateral]  
Phoridae  
BIN URI: BOLD:AAG3307





[Lateral]  
Phoridae  
BIN URI: BOLD:AAZ6701



[Lateral]  
Phoridae  
BIN URI: BOLD:AAG3233



[Lateral]  
Phoridae  
BIN URI: BOLD:ACB6729



[Lateral]  
Platypozina  
BIN URI: BOLD:ACD8933



[Lateral]  
Psychodidae  
BIN URI: BOLD:AAF9314



[Lateral]  
Boettcheria cimbicis  
BIN URI: BOLD:AAG6756



[Lateral]  
Diptera  
BIN URI: BOLD:AAG6743



[Lateral]  
Scatopsiara  
BIN URI: BOLD:AAH3920



[Lateral]  
Sciaridae  
BIN URI: BOLD:AAH3942



[Lateral]  
Sciaridae  
BIN URI: BOLD:ABV1201



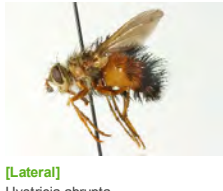
[Lateral]  
Simuliidae  
BIN URI: BOLD:AAG9570



[Lateral]  
Sphaeroceridae  
BIN URI: BOLD:AAG7275



[Lateral]  
Heringia rita  
BIN URI: BOLD:AAG4653



[Lateral]  
Hystriicia abrupta  
BIN URI: BOLD:AAM7885



[Lateral]  
Baetis intercalaris  
BIN URI: BOLD:AAD2385



[Lateral]  
Plauditus cingulatus  
BIN URI: BOLD:AAC9227



[Lateral]  
Aleyrodidae  
BIN URI: BOLD:AAZ8499



[Lateral]  
Aleyrodidae  
BIN URI: BOLD:ABA5817



[Dorsal]  
Euceraphis papyrifera  
BIN URI: BOLD:AAH2870



[Lateral]  
Nearctaphis crataegifoliae  
BIN URI: BOLD:ACF1270



[Lateral]  
Aphophora alni  
BIN URI: BOLD:AAZ2091



[Lateral]  
Cercopidae  
BIN URI: BOLD:AAG8827



[Lateral]  
Balclutha punctata  
BIN URI: BOLD:AAG9374



[Lateral]  
Balclutha  
BIN URI: BOLD:AAZ6737



[Lateral]  
Cuerna striata  
BIN URI: BOLD:AAG2877



[Lateral]  
Latalus ocellaris  
BIN URI: BOLD:AAG8839



[Lateral]  
Forcipata loca  
BIN URI: BOLD:ACC8165



[Lateral]  
Hemiptera  
BIN URI: BOLD:AAZ2073



[Lateral]  
Ribautiana  
BIN URI: BOLD:AAZ8410



[Lateral]  
Typhlocyba pomaria  
BIN URI: BOLD:AAF5980



[Lateral]  
Typhlocyba  
BIN URI: BOLD:ABA5828



[Dorsal]  
Cixius misellus  
BIN URI: BOLD:ACB0325



[Dorsal]  
Lygus lineolaris  
BIN URI: BOLD:AAA5803



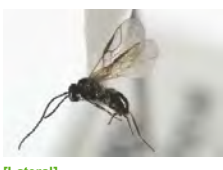
[Dorsal]  
Psallovius piceicola  
BIN URI: BOLD:AAC4309



[Lateral]  
Bombus impatiens  
BIN URI: BOLD:ABZ2516



[Lateral]  
Bombus vagans  
BIN URI: BOLD:AAB1777



[Lateral]  
Dacus  
BIN URI: BOLD:AAI9645



[Lateral]  
Praon brevistigma  
BIN URI: BOLD:AAH7424



[Lateral]  
Braconidae  
BIN URI: BOLD:ABA5893



[Lateral]  
Alysiae  
BIN URI: BOLD:AAZ8138



[Lateral]  
Alysiae  
BIN URI: BOLD:ACL8950



[Lateral]  
Braconidae  
BIN URI: BOLD:ACP7921



[Lateral]  
Braconidae  
BIN URI: BOLD:AAG1439



[Lateral]  
Braconidae  
BIN URI: BOLD:AAZ3271



[Lateral]  
Hymenoptera  
BIN URI: BOLD:AAO2112



[Lateral]  
Cynipidae  
BIN URI: BOLD:AAM7405



[Lateral]  
Cynipidae  
BIN URI: BOLD:ABW3284



[Lateral]  
Diapriidae  
BIN URI: BOLD:ACD0542



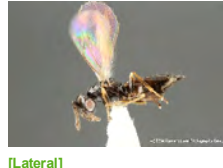
[Lateral]  
Hymenoptera  
BIN URI: BOLD:AAU8478



[Lateral]  
Encyrtidae  
BIN URI: BOLD:ACP7596



[Lateral]  
Encyrtidae  
BIN URI: BOLD:ACL6258



[Lateral]  
Aprostocetus SS0212  
BIN URI: BOLD:ABA2854



[Lateral]  
Eurytoma  
BIN URI: BOLD:ABA8062



[Dorsal]  
Brachymyrmex depilis  
BIN URI: BOLD:AAD7490



[Lateral]  
Formica glacialis  
BIN URI: BOLD:AAA1468



[Lateral]  
Myrmicinae  
BIN URI: BOLD:ACP9284



[Lateral]  
Lasiglossus cressonii  
BIN URI: BOLD:AAA5973



[Lateral]  
Sphecodes stygius  
BIN URI: BOLD:AAD7375



[Lateral]  
Apechthis ontario  
BIN URI: BOLD:AAA9338



[Lateral]  
Cymodusa distincta  
BIN URI: BOLD:ABZ4363



[Lateral]  
Hymenoptera  
BIN URI: BOLD:ACH0295



[Lateral]  
Ichneumonidae  
BIN URI: BOLD:AAG8275



[Lateral]  
Hymenoptera  
BIN URI: BOLD:AAU8490



[Lateral]  
Orthocentrus JFT02  
BIN URI: BOLD:AAU8218



[Lateral]  
Stenomacrus  
BIN URI: BOLD:AAJ5372



[Lateral]  
Ichneumonidae  
BIN URI: BOLD:ABY7035



[Lateral]  
Ichneumonidae  
BIN URI: BOLD:ABX2589



[Lateral]  
Ctenopelmatinae sp. MAS  
BIN URI: BOLD:ABZ1476



[Lateral]  
Ichneumonidae  
BIN URI: BOLD:AAH8161



[Lateral]  
Ichneumoninae  
BIN URI: BOLD:AAH1882



[Lateral]  
Ichneumoninae  
BIN URI: BOLD:AAH1731



[Lateral]  
Ichneumonidae  
BIN URI: BOLD:ACI4230



[Lateral]  
Hymenoptera  
BIN URI: BOLD:AAA5524



[Lateral]  
Orthocentrinae  
BIN URI: BOLD:AAH1826



[Lateral]  
Ichneumonidae  
BIN URI: BOLD:AAU9331



[Lateral]  
Megaspilidae  
BIN URI: BOLD:ACJ1417



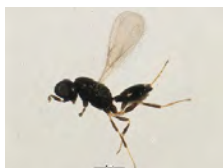
[Lateral]  
Hymenoptera  
BIN URI: BOLD:ABX2601



[Lateral]  
Synopeas  
BIN URI: BOLD:AAU8570



[Lateral]  
Synopeas  
BIN URI: BOLD:AAU8571



[Lateral]  
Telenomus  
BIN URI: BOLD:AAH8098



[Lateral]  
Telenomus  
BIN URI: BOLD:ABA6042



[Lateral]  
Platygastridae  
BIN URI: BOLD:ABA6117

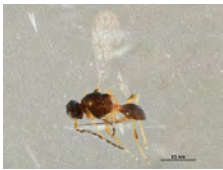


[Lateral]  
Platygastridae  
BIN URI: BOLD:ACD9348

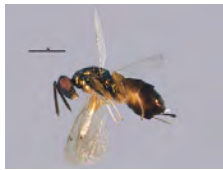


[Lateral]  
Platygastrinae  
BIN URI: BOLD:ACD3193





[Lateral]  
Platygasterinae  
BIN URI: BOLD:ACM5446



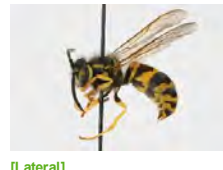
[Lateral]  
Toryminae  
BIN URI: BOLD:ACN3406



[Lateral]  
Trichogramma platneri  
BIN URI: BOLD:AAE0242



[Lateral]  
Vespa flavopilosa  
BIN URI: BOLD:AAG7678



[Lateral]  
Vespa maculifrons  
BIN URI: BOLD:AAD5593



[Dorsal]  
Agonopterix argillacea  
BIN URI: BOLD:ACF4387



[Dorsal]  
Chionodes obscurusella  
BIN URI: BOLD:AAA4439



[Dorsal]  
Coleotechnites quercivorella  
BIN URI: BOLD:AAA4969



[Lateral]  
Lambdina fiscellaria  
BIN URI: BOLD:ACE9385



[Dorsal]  
Caloptilia invariabilis  
BIN URI: BOLD:AAH4508



[Dorsal]  
Parectopa occulta  
BIN URI: BOLD:AAD5802



[Lateral]  
Epinotia radicana  
BIN URI: BOLD:AAA9457



[Dorsal]  
Epinotia radicana  
BIN URI: BOLD:AAA9458



[Dorsal]  
Phaneta ochroterminana  
BIN URI: BOLD:AAA5486



[Dorsal]  
Conwentzia pineticola  
BIN URI: BOLD:AAU1711



[Dorsal]  
Leuctra  
BIN URI: BOLD:ACM0436



[Lateral]  
Psocoptera  
BIN URI: BOLD:AAH3228



[Lateral]  
Caeciliusidae  
BIN URI: BOLD:AAP4636



[Dorsal]  
Psocoptera  
BIN URI: BOLD:AAP4635



[Lateral]  
Psocoptera  
BIN URI: BOLD:ACD2779



[Lateral]  
Psocoptera  
BIN URI: BOLD:ABW5646



[Lateral]  
Psocoptera  
BIN URI: BOLD:AAP4628



[Lateral]  
Psocoptera  
BIN URI: BOLD:AAM8930



[Lateral]  
Psocoptera  
BIN URI: BOLD:AAH3232



[Lateral]  
Psocoptera  
BIN URI: BOLD:ABA6550



[Dorsal]  
Phlaeothripidae  
BIN URI: BOLD:ABX2572



[Lateral]  
Hydropsyche morosa  
BIN URI: BOLD:AAA3678