

School Malaise Trap Program

Species Image Library

The images of the species collected in your Malaise trap are shown below. A single representative from each species was selected to be photographed; in some cases, only a damaged specimen was available.



[Dorsal]
Grammonota angusta
BIN URI: BOLD:AAD1498



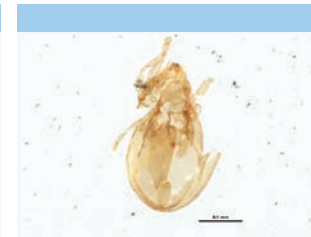
[Dorsal]
Hypselistes florens
BIN URI: BOLD:AAB4233



[Lateral]
Tetragnatha laboriosa
BIN URI: BOLD:AAA6383



[Dorsal]
Tetragnatha viridis
BIN URI: BOLD:AAN6335



[Dorsal]
Oribatulidae
BIN URI: BOLD:ACM2017



[Dorsal]
Arachnida
BIN URI: BOLD:ACY2413



[Dorsal]
Arachnida
BIN URI: BOLD:ACY2412



[Dorsal]
Arachnida
BIN URI: BOLD:ACY2017



[Lateral]
Entomobrya nivalis
BIN URI: BOLD:AAA8924



[Lateral]
Longitarsus
BIN URI: BOLD:ACL9494



[Lateral]
Longitarsus testaceus
BIN URI: BOLD:AAP8332



[Dorsal]
Pyrrhalta viburni
BIN URI: BOLD:AAL1083



[Dorsal]
Coccinellidae
BIN URI: BOLD:AAB5640



[Lateral]
Ellychnia facula
BIN URI: BOLD:AAF4976



[Lateral]
Scirtidae
BIN URI: BOLD:ACI5580



[Dorsal]
Scirtidae
BIN URI: BOLD:ACY2344



[Dorsal]
Curculionidae
BIN URI: BOLD:ACY2784



[Dorsal]
Forficula auricularia-AD
BIN URI: BOLD:AAG9897



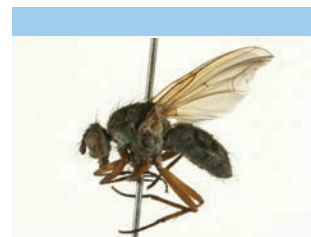
[Lateral]
Cerodontha muscina
BIN URI: BOLD:AAF1051



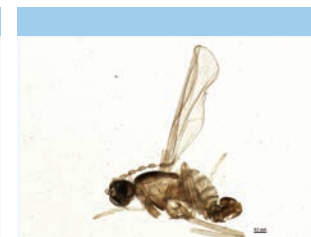
[Lateral]
Anisopodidae
BIN URI: BOLD:AAG1996



[Lateral]
Anthomyia plurinotata
BIN URI: BOLD:AAG1708



[Lateral]
Anthomyiidae
BIN URI: BOLD:AAG2461



[Lateral]
Cecidomyiidae
BIN URI: BOLD:ACM9434



[Lateral]
Cecidomyiidae
BIN URI: BOLD:AAP5342



[Lateral]
Dasyhelea
BIN URI: BOLD:AAN5161



[Lateral]
Metriocnemus sp. 4ES
BIN URI: BOLD:ABX5809



[Lateral]
Metriocnemus
BIN URI: BOLD:ACB9910



[Lateral]
Parametriocnemus
BIN URI: BOLD:AAN5348



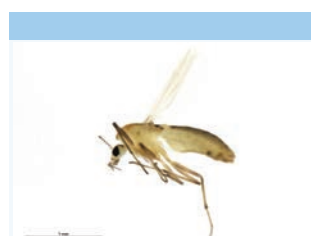
[Lateral]
Smittia edwardsi
BIN URI: BOLD:AAF4817



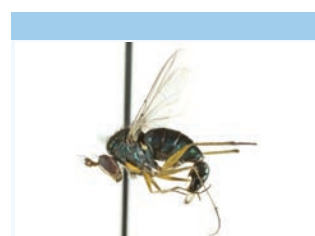
[Lateral]
Chironomidae
BIN URI: BOLD:ACA2954



[Lateral]
Orthocladiinae
BIN URI: BOLD:ACL7967



[Lateral]
Chironomidae
BIN URI: BOLD:AAN5342



[Lateral]
Dolichopus plumipes
BIN URI: BOLD:AAG9616



[Lateral]
Dolichopus
BIN URI: BOLD:AAG9652



[Lateral]
Drosophilidae
BIN URI: BOLD:AAN5544



[Lateral]
Mycetophila fungorum
BIN URI: BOLD:ACF2821



[Lateral]
Mycetophilidae
BIN URI: BOLD:AAP6493



[Lateral]
Mycetophila
BIN URI: BOLD:AAG4978



[Lateral]
Phoridae
BIN URI: BOLD:ACX1594



[Lateral]
Megaselia rufipes
BIN URI: BOLD:AAG3274



[Lateral]
Megaselia
BIN URI: BOLD:AAG3266



[Lateral]
Phoridae
BIN URI: BOLD:AAM9355



[Lateral]
Phoridae
BIN URI: BOLD:ACV3195



[Lateral]
Phoridae
BIN URI: BOLD:AAM9365



[Lateral]
Bradysia trivittata
BIN URI: BOLD:ACE4654



[Lateral]
Bradysia
BIN URI: BOLD:AAV1295



[Lateral]
Bradysia atroparva
BIN URI: BOLD:AAM9243



[Lateral]
Sciaridae
BIN URI: BOLD:AAV1261



[Lateral]
Sciaridae
BIN URI: BOLD:AAM9242



[Lateral]
Ctenosciara hyalipennis
BIN URI: BOLD:AAH3983



[Lateral]
Sciaridae
BIN URI: BOLD:AAH3914



[Lateral]
Sciaridae
BIN URI: BOLD:AAM9241



[Lateral]
Sciaridae
BIN URI: BOLD:AAN6445



[Lateral]
Sciaridae
BIN URI: BOLD:ABA6407



[Lateral]
Sciaridae
BIN URI: BOLD:AAQ2557



[Lateral]
Siphona nr. geniculata sp. 1
BIN URI: BOLD:AAG2108



[Lateral]
Compsilura concinnata
BIN URI: BOLD:ACX8696



[Lateral]
Tipula paludosa
BIN URI: BOLD:AAE7386



[Lateral]
Lepyrionia quadrangularis
BIN URI: BOLD:AAG8827



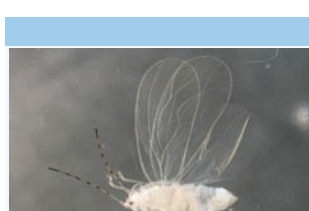
[Dorsal]
Typhlocyba hockingensis
BIN URI: BOLD:ABW2932



[Lateral]
Xestocephalus fulvocapitatus
BIN URI: BOLD:AAV6746



[Lateral]
Typhlocyba
BIN URI: BOLD:ABA5828



[Lateral]
Psyllidae
BIN URI: BOLD:ACK4027



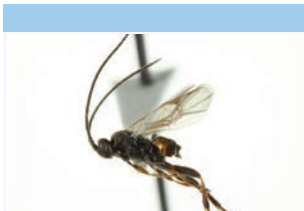
[Lateral]
Psyllidae
BIN URI: BOLD:ACL9970



[Lateral]
Aphelinidae
BIN URI: BOLD:ABW3170



[Lateral]
Bethylinidae
BIN URI: BOLD:ACJ9768



[Lateral]
Apanteles ensiger
BIN URI: BOLD:AAA3764



[Lateral]
Glyptapanteles sp.
BIN URI: BOLD:AAA4783



[Lateral]
Meteorus
BIN URI: BOLD:AAG1439



[Lateral]
Praon
BIN URI: BOLD:ABW3216



[Lateral]
Hymenoptera
BIN URI: BOLD:AAU8585



[Lateral]
Alysiinae
BIN URI: BOLD:AAN8138



[Lateral]
Alysiinae
BIN URI: BOLD:AAU8592



[Lateral]
Alysiinae
BIN URI: BOLD:AAU8209



[Dorsal]
Trichopria verticillata
BIN URI: BOLD:ACH3554



[Lateral]
Formica
BIN URI: BOLD:AAI5677



[Lateral]
Myrmica
BIN URI: BOLD:ACF3127



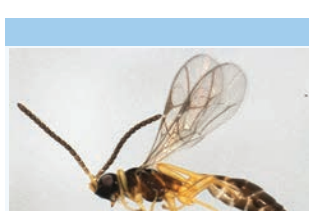
[Lateral]
Myrmica incompleta
BIN URI: BOLD:AAA1857



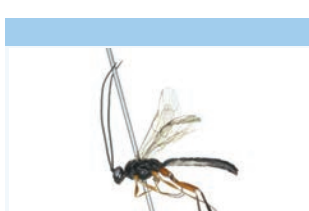
[Lateral]
Hymenoptera
BIN URI: BOLD:AAA6280



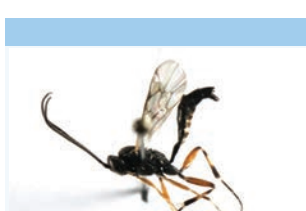
[Lateral]
Lissonota coracina
BIN URI: BOLD:AAG7794



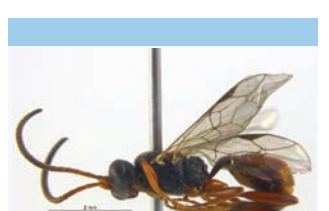
[Lateral]
Hymenoptera
BIN URI: BOLD:AAN8195



[Lateral]
Banchinae
BIN URI: BOLD:AAG7697



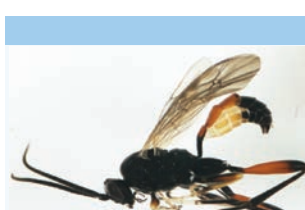
[Lateral]
Campopleginae
BIN URI: BOLD:AAG5783



[Lateral]
Cryptinae
BIN URI: BOLD:ACD0494



[Lateral]
Hymenoptera



[Lateral]
Cryptinae



[Lateral]
Ichneumonidae



[Lateral]
Telenomus



[Dorsal]
Nesoselandria morio



[Lateral]
Trichogramma platneri

BIN URI: BOLD:AAG7744



[Dorsal]

Coleophora deauratella
BIN URI: BOLD:AAY9557

BIN URI: BOLD:ABA5984



[Dorsal]

Eudonia lugubralis
BIN URI: BOLD:AAA1518

BIN URI: BOLD:ACV5325



[Dorsal]

Lambdina fiscellaria
BIN URI: BOLD:AAA5482

BIN URI: BOLD:AAU8983



[Lateral]

Paraleuctra
BIN URI: BOLD:ACB9919

BIN URI: BOLD:AAU8235



[Dorsal]

Psocoptera
BIN URI: BOLD:AAH3229

BIN URI: BOLD:AAE0242



[Lateral]

Metylophorus novaescotiae
BIN URI: BOLD:AAH3225



[Lateral]

Onocosmoecus unicolor
BIN URI: BOLD:AAB2453