

School Malaise Trap Program

Species Image Library

The images of the species collected in your Malaise trap are shown below. A single representative for each species was selected to be photographed; in some cases, only a damaged specimen was available.

Re-render images: per row

300 Records Per Page - Pages: 1



[Dorsal]
Erigone arctica
BIN URI: BOLD:AAB6851



[Dorsal]
Erigone atra
BIN URI: BOLD:ACE5877



[Lateral]
Erigone atra
BIN URI: BOLD:ACE8336



[Dorsal]
Arachnida
BIN URI: BOLD:ACM5222



[Ventral]
Chernetidae
BIN URI: BOLD:ABW8566



[Dorsal]
Oribatulidae
BIN URI: BOLD:ACF9074



[Lateral]
Collembola
BIN URI: BOLD:ACC0595



[Lateral]
Isotomidae
BIN URI: BOLD:ACJ0127



[Dorsal]
Bembidion minus
BIN URI: BOLD:AAP6948



[Lateral]
Dibolia borealis
BIN URI: BOLD:AAL0908



[Lateral]
Phyllotreta albionica
BIN URI: BOLD:AAH0255



[Dorsal]
Galerucella pusilla
BIN URI: BOLD:AAL2945



[Lateral]
Enoclerus nigripes rufiventris
BIN URI: BOLD:AAU6970



[Dorsal]
Coleomegilla maculata lengi
BIN URI: BOLD:AAD7604



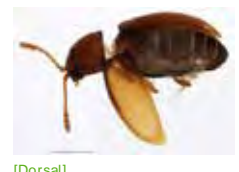
[Dorsal]
Coccinellidae
BIN URI: BOLD:AAB5640



[Dorsal]
Coleoptera
BIN URI: BOLD:ABA9097



[Dorsal]
Atomaria fuscata
BIN URI: BOLD:ABA9946



[Dorsal]
Atomaria CHU2
BIN URI: BOLD:AAG5060



[Lateral]
Curculionidae
BIN URI: BOLD:AAM7726



[Lateral]
Mycetina perpulchra
BIN URI: BOLD:AAH3321



[Dorsal]
Erotylidae
BIN URI: BOLD:ABA6320



[Lateral]
Sciodreporoides watsoni
BIN URI: BOLD:ACL7379



[Dorsal]
Philonthus cognatus
BIN URI: BOLD:AAL5087



[Dorsal]
Tachyporus nitidulus
BIN URI: BOLD:ABA9096



[Lateral]
Tachyporus chrysomelinus
BIN URI: BOLD:AAN9511



[Lateral]
Trichiusa immigrata
BIN URI: BOLD:AAY6555



[Dorsal]
Atheta hansseni
BIN URI: BOLD:ABA6362



[Dorsal]
Trixagus carinicolis
BIN URI: BOLD:AAN6148



[Dorsal]
Throscidae
BIN URI: BOLD:ACF8584



[Lateral]
Anisopodidae
BIN URI: BOLD:AAL7534



[Lateral]
Aulacigaster
BIN URI: BOLD:ABV3853



[Lateral]
Cynomya cadaverina
BIN URI: BOLD:AAB0868



[Lateral]
Diptera
BIN URI: BOLD:AAG6745



[Lateral]
Cecidomyiidae
BIN URI: BOLD:ACP7716



[Lateral]
Cecidomyiidae
BIN URI: BOLD:AAN5267



[Lateral]
Cecidomyiidae
BIN URI: BOLD:AAV5561



[Lateral]
Cecidomyiidae
BIN URI: BOLD:AAN5283



[Lateral]
Cecidomyiidae
BIN URI: BOLD:AAN5226



[Lateral]
Cecidomyiidae
BIN URI: BOLD:ABX0130



[Lateral]
Cecidomyiidae
BIN URI: BOLD:AAH3639



[Lateral]
Cecidomyiidae
BIN URI: BOLD:AAN5268



[Lateral]
Cecidomyiidae
BIN URI: BOLD:AAV6401



[Lateral]
Ceratopogonidae
BIN URI: BOLD:AAN5148



[Lateral]
Chironomidae
BIN URI: BOLD:AAJ4295



[Lateral]
Chironomus melanescens
BIN URI: BOLD:AAI4303



[Lateral]
Micropsectra nigripila
BIN URI: BOLD:ABZ5071



[Lateral]
Micropsectra
BIN URI: BOLD:ABV1194



[Dorsal]
Paracladopelma winnelli
BIN URI: BOLD:AAK4963



[Dorsal]
Chironomidae
BIN URI: BOLD:ACP4736



[Lateral]
Chironomidae
BIN URI: BOLD:ACM2385



[Lateral]
Chironomidae
BIN URI: BOLD:AAN5342



[Lateral]
Chironomidae
BIN URI: BOLD:ACP9773



[Lateral]
Chironomidae
BIN URI: BOLD:ACJ6550



[Lateral]
Chironominae
BIN URI: BOLD:ACP7640



[Dorsal]
Chironomidae
BIN URI: BOLD:AAP8997



[Lateral]
Chironomidae
BIN URI: BOLD:ABV1203



[Lateral]
Chironomidae
BIN URI: BOLD:ACM1709



[Lateral]
Chironomidae
BIN URI: BOLD:ACC7822



[Lateral]
Metalimnobia quadrimaculata
cinctipes
BIN URI: BOLD:AAK8831



[Lateral]
Coenosia tigrina
BIN URI: BOLD:AAB5609



[Lateral]
Muscidae
BIN URI: BOLD:AAG1711



[Lateral]
Muscidae
BIN URI: BOLD:AAG1717



[Lateral]
Muscidae
BIN URI: BOLD:ACP8336



[Lateral]
Mycetophilidae
BIN URI: BOLD:AAM9013



[Lateral]
Phoridae
BIN URI: BOLD:AAG3236



[Lateral]
Phoridae
BIN URI: BOLD:AAG3248



[Lateral]
Phoridae
BIN URI: BOLD:ABU5528



[Lateral]
Phoridae
BIN URI: BOLD:ABU5529



[Lateral]
Phoridae
BIN URI: BOLD:AAM9355



[Lateral]
Platystomatidae
BIN URI: BOLD:AAP8739



[Lateral]
Psychodidae
BIN URI: BOLD:AAF9317



[Lateral]
Psychodidae
BIN URI: BOLD:AAO8538



[Lateral]
Psychodidae
BIN URI: BOLD:ABU5546



[Lateral]
Diptera
BIN URI: BOLD:AAG6743



[Lateral]
Lycoriella castanescens
BIN URI: BOLD:ABA1215



[Lateral]
Sciaridae
BIN URI: BOLD:AAZ6412



[Lateral]
Sciaridae
BIN URI: BOLD:AAN6433



[Lateral]
Sciaridae
BIN URI: BOLD:AAP6465



[Lateral]
Sciaridae
BIN URI: BOLD:ABA6407



[Lateral]
Sciaridae
BIN URI: BOLD:AAN6447



[Lateral]
Sphaeroceridae
BIN URI: BOLD:AAH3548



[Lateral]
Sargus decorus
BIN URI: BOLD:AAG3694



[Lateral]
Syrphidae
BIN URI: BOLD:AAB2384



[Lateral]
Platychirus peltatoides
BIN URI: BOLD:AAC6630



[Lateral]
Toxomerus marginatus
BIN URI: BOLD:AAA4277



[Lateral]
Tipula paludosa
BIN URI: BOLD:AAE7386



[Lateral]
Aleyrodidae
BIN URI: BOLD:AAZ8500



[Lateral]
Aleyrodidae
BIN URI: BOLD:AAZ8499



[Dorsal]
Hayhurstia atriplicis
BIN URI: BOLD:AAF1937



[Dorsal]
Myzus persicae
BIN URI: BOLD:AAA7683



[Lateral]
Rhopalomyzus loniceræ
BIN URI: BOLD:AAC4637



[Lateral]
Aphrophora alni
BIN URI: BOLD:AAZ2091



[Lateral]
Philaenus spumarius
BIN URI: BOLD:AAB1850



[Lateral]
Balciutha
BIN URI: BOLD:AAZ6737



[Lateral]
Eupteryx atropunctata
BIN URI: BOLD:AAG2869



[Lateral]
Forcipata loca
BIN URI: BOLD:ACC8165



[Dorsal]
Nysius niger
BIN URI: BOLD:AAE6011



[Lateral]
Adelphocoris lineolatus
BIN URI: BOLD:ACE7444



[Dorsal]
Lygus lineolaris
BIN URI: BOLD:AAA5803



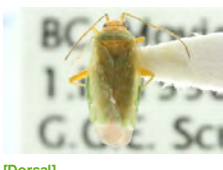
[Lateral]
Phytocoris
BIN URI: BOLD:ABA5880



[Dorsal]
Plagiognathus fuscus
BIN URI: BOLD:AAB3380



[Dorsal]
Trigonotylus pulchellus
BIN URI: BOLD:AAF9949



[Dorsal]
Melanotrichus flavosparsus
BIN URI: BOLD:AAD6089



[Lateral]
Nabis americanoferus
BIN URI: BOLD:AAB8143



[Lateral]
Aphelinus varipes
BIN URI: BOLD:ABW3282



[Lateral]
Aphelinidae
BIN URI: BOLD:ABA5901



[Lateral]
Braconidae
BIN URI: BOLD:ABZ5749



[Lateral]
Braconidae
BIN URI: BOLD:AAU8583



[Lateral]
Microplitis jft23
BIN URI: BOLD:ABZ3353



[Lateral]
Hymenoptera
BIN URI: BOLD:ACD2708



[Lateral]
Hymenoptera
BIN URI: BOLD:AAU8209



[Lateral]
Hymenoptera
BIN URI: BOLD:AAU8585



[Lateral]
Braconinae
BIN URI: BOLD:AAU9834



[Lateral]
Hymenoptera
BIN URI: BOLD:AAO2112



[Lateral]
Braconidae
BIN URI: BOLD:AAQ2892



[Lateral]
Rogadinae
BIN URI: BOLD:AAG5010



[Lateral]
Camponotus pennsylvanicus
BIN URI: BOLD:AAA9461



[Lateral]
Formica glacialis
BIN URI: BOLD:AAA1468



[Lateral]
Lasius
BIN URI: BOLD:AAB9126



[Lateral]
Lasius
BIN URI: BOLD:ACE8630



[Lateral]
Myrmica AF-smi
BIN URI: BOLD:AAA1840



[Lateral]
Stenamma
BIN URI: BOLD:AAM7181



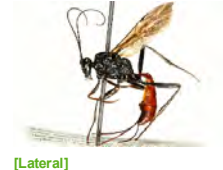
[Lateral]
Lasioglossum leucozonium
BIN URI: BOLD:AAA2322



[Lateral]
Halictus sp.
BIN URI: BOLD:AAI7955



[Lateral]
Campoletis flavicincta
BIN URI: BOLD:AAN7740



[Lateral]
Cryptus albicans
BIN URI: BOLD:AAH1693



[Dorsal]
Ichneumonidae
BIN URI: BOLD:AAG7628



[Lateral]
Hymenoptera
BIN URI: BOLD:AAD4214



[Lateral]
Ichneumoninae
BIN URI: BOLD:AAG7790



[Lateral]
Lissonota coracina
BIN URI: BOLD:AAA6712



[Lateral]
Hymenoptera
BIN URI: BOLD:ABZ7958



[Lateral]
Vulgichneumon deceptor
BIN URI: BOLD:AAG7645



[Lateral]
Cryptinae sp. MAS BIN84
BIN URI: BOLD:AAE9438



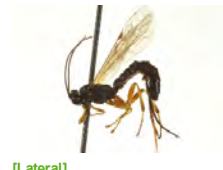
[Lateral]
Banchinae
BIN URI: BOLD:AAH1851



[Lateral]
Ichneumonidae
BIN URI: BOLD:ACJ7020



[Lateral]
Hymenoptera
BIN URI: BOLD:AAH7283



[Lateral]
Tromatobia variabilis
BIN URI: BOLD:AAD5195



[Dorsal]
Hymenoptera
BIN URI: BOLD:ACJ7345



[Lateral]
Myrmica
BIN URI: BOLD:ABA9139



[Lateral]
Myrmica
BIN URI: BOLD:ABW3187



[Lateral]
Platygasteridae
BIN URI: BOLD:AAG7883



[Dorsal]
Trissolcus
BIN URI: BOLD:ACJ6984



[Lateral]
Scelioninae
BIN URI: BOLD:ACP8190



[Lateral]
Pompilidae
BIN URI: BOLD:AAG4386



[Lateral]
Pteromalinae
BIN URI: BOLD:ACP9634



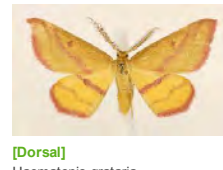
[Lateral]
Ametastegia glabrata
BIN URI: BOLD:AAP1498



[Dorsal]
Pachynematus obductus
BIN URI: BOLD:AAA3228



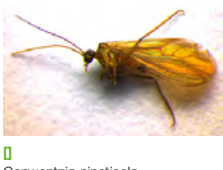
[Lateral]
Hymenoptera
BIN URI: BOLD:ABA5903



[Dorsal]
Haematopis grataria
BIN URI: BOLD:AAB3533



[Dorsal]
Phyllocnistis
BIN URI: BOLD:AAI3015



[Lateral]
Conwentzia pineticola
BIN URI: BOLD:AAU1711



[Lateral]
Melanoplus
BIN URI: BOLD:AAA4555



[Lateral]
Psocoptera
BIN URI: BOLD:AAH3228



[Lateral]
Psocoptera
BIN URI: BOLD:AAF1729

