

# School Malaise Trap Program

## Species Image Library

The images of the species collected in your Malaise trap are shown below. A single representative for each species was selected to be photographed; in some cases, only a damaged specimen was available.

Re-render images:  per row

300 Records Per Page - Pages: 1



[Dorsal]  
*Ceraticelus similis*  
BIN URI: BOLD:AAF1318



[Dorsal]  
*Grammonota gentilis*  
BIN URI: BOLD:AAA9476



[Lateral]  
*Trochosa ruricola*  
BIN URI: BOLD:AAB0726



[Dorsal]  
*Tetragnatha laboriosa*  
BIN URI: BOLD:AAA6381



[Dorsal]  
*Xysticus auctificus*  
BIN URI: BOLD:AAG1219



[Dorsal]  
*Xysticus*  
BIN URI: BOLD:ACP7594



[Dorsal]  
Bourletellidae  
BIN URI: BOLD:AAAN4906



[Dorsal]  
*Atomaria fuscata*  
BIN URI: BOLD:ABA9946



[Dorsal]  
*Sitona hispidulus*  
BIN URI: BOLD:AAH0130



[Dorsal]  
Erytlyidae  
BIN URI: BOLD:ABA6320



[Lateral]  
*Corticaria*  
BIN URI: BOLD:AAAN6154



[Dorsal]  
*Corticinara gibbosa*  
BIN URI: BOLD:AAI8935



[Dorsal]  
*Cyphon laevipennis*  
BIN URI: BOLD:AAG3633



[Dorsal]  
*Ahasverus advena*  
BIN URI: BOLD:AAJ2005



[Dorsal]  
*Philonthus carbonarius*  
BIN URI: BOLD:AAR1764



[Lateral]  
*Tachinus corticinus*  
BIN URI: BOLD:AAH0107



[Dorsal]  
*Trixagus*  
BIN URI: BOLD:ABW2869



[Dorsal]  
*Trixagus*  
BIN URI: BOLD:AAU6966



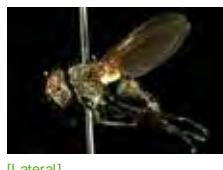
[Lateral]  
*Agromyza frontella*  
BIN URI: BOLD:AAJ7105



[Lateral]  
*Liriomyza fricki*  
BIN URI: BOLD:AAK8756



[Lateral]  
Agromyziidae  
BIN URI: BOLD:ACP7818



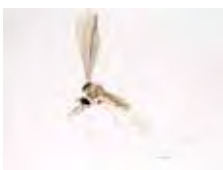
[Lateral]  
Diptera  
BIN URI: BOLD:AAG6745



[Lateral]  
Cecidomyiidae  
BIN URI: BOLD:AAAN5215



[Dorsal]  
Cecidomyiidae  
BIN URI: BOLD:AAP9022



[Lateral]  
Cecidomyiidae  
BIN URI: BOLD:ACD4561



[Dorsal]  
Cecidomyiidae  
BIN URI: BOLD:AAAN5249



[Lateral]  
Cecidomyiidae  
BIN URI: BOLD:AAV5796



[Lateral]  
Cecidomyiidae  
BIN URI: BOLD:AAV6455



[Lateral]  
Cecidomyiidae  
BIN URI: BOLD:AAM6043



[Lateral]  
Cecidomyiidae  
BIN URI: BOLD:AAP5342



[Lateral]  
Cecidomyiidae  
BIN URI: BOLD:ACC7280



[Lateral]  
Cecidomyiidae  
BIN URI: BOLD:AAH3639



[Lateral]  
Chaoboridae  
BIN URI: BOLD:AAG2647



[Lateral]  
Chironomus cf. decorus  
BIN URI: BOLD:AAB7030



[Lateral]  
Cricotopus  
BIN URI: BOLD:AAN5318



[Lateral]  
Cryptochironomus  
BIN URI: BOLD:ACP7411



[Lateral]  
Heterotrissociadius  
BIN URI: BOLD:AAx0836



[Lateral]  
Chironomidae  
BIN URI: BOLD:AAN5369



[Lateral]  
Chironomidae  
BIN URI: BOLD:ABW2734



[Lateral]  
Micropsectra subletteorum  
BIN URI: BOLD:AAF7088



[Dorsal]  
Paracladopelma winnelli  
BIN URI: BOLD:AAK4963



[Lateral]  
Polypedium convictum  
BIN URI: BOLD:AAD1395



[Lateral]  
Tanytarsus guerlus  
BIN URI: BOLD:AAC4523



[Lateral]  
Chironomidae  
BIN URI: BOLD:ACC4669



[Lateral]  
Chironomidae  
BIN URI: BOLD:AAN5342



[Lateral]  
Chironomidae  
BIN URI: BOLD:AAG6462



[Lateral]  
Chironomidae  
BIN URI: BOLD:ACC8266



[Lateral]  
Chironomidae  
BIN URI: BOLD:AAL7331



[Lateral]  
Chironomidae  
BIN URI: BOLD:AAG5463



[Lateral]  
Thaumatomyia glabra  
BIN URI: BOLD:AAH4135



[Lateral]  
Drosophila  
BIN URI: BOLD:AAG8493



[Lateral]  
Heleomyzidae  
BIN URI: BOLD:AAG0459



[Lateral]  
Empididae  
BIN URI: BOLD:AAF9771



[Lateral]  
Coenosia tigrina  
BIN URI: BOLD:AAB5609



[Lateral]  
Coenosia  
BIN URI: BOLD:ABV1242



[Lateral]  
Helina sp.  
BIN URI: BOLD:AAC2498



[Lateral]  
Muscina stabulans  
BIN URI: BOLD:AAF6582



[Lateral]  
Cordyla  
BIN URI: BOLD:ABV9015



[Lateral]  
Mycetophilidae  
BIN URI: BOLD:AAG4968



[Lateral]  
Mycetophilidae  
BIN URI: BOLD:AAM8980



[Lateral]  
Mycetophilidae  
BIN URI: BOLD:ABV9018



[Lateral]  
Opomyzidae  
BIN URI: BOLD:AAG3915



[Lateral]  
Phoridae  
BIN URI: BOLD:AAG3236



[Lateral]  
Phoridae  
BIN URI: BOLD:AAG3275



[Lateral]  
Phoridae  
BIN URI: BOLD:ABU5529



[Lateral]  
Phoridae  
BIN URI: BOLD:ABU5535



[Lateral]  
Psychodidae  
BIN URI: BOLD:AAP4581



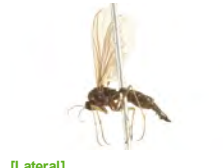
[Lateral]  
Diptera  
BIN URI: BOLD:AAG6743



[Lateral]  
Sciaridae  
BIN URI: BOLD:ABA0929



[Lateral]  
Lycoriella castanescens  
BIN URI: BOLD:ABA1215



[Lateral]  
Sciaridae  
BIN URI: BOLD:AAH3914



[Lateral]  
Sciaridae  
BIN URI: BOLD:ABA6488



[Lateral]  
Sciaridae  
BIN URI: BOLD: AAN6770



[Lateral]  
Sciaridae  
BIN URI: BOLD: AAU6595



[Lateral]  
Sciaridae  
BIN URI: BOLD: AAP6465



[Lateral]  
Sciaridae  
BIN URI: BOLD: AAN6447



[Lateral]  
Sciaridae  
BIN URI: BOLD: ACL7849



[Lateral]  
Sciaridae  
BIN URI: BOLD: ABU5520



[Lateral]  
Sciaridae  
BIN URI: BOLD: AAZ5626



[Lateral]  
Sciaridae  
BIN URI: BOLD: ABA6407



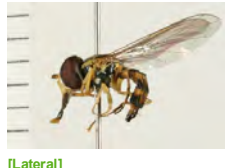
[Lateral]  
Leptocera erythroera  
BIN URI: BOLD: AAG7276



[Lateral]  
Spelobia ochripes  
BIN URI: BOLD: AAG7279



[Lateral]  
Syrphus vitripennis  
BIN URI: BOLD: AAB5577



[Lateral]  
Toxomerus geminatus  
BIN URI: BOLD: AAC1312



[Lateral]  
Nephrotoma  
BIN URI: BOLD: ACE9463



[Lateral]  
Tipula paludosa  
BIN URI: BOLD: AAE7386



[Lateral]  
Tipula cf. maritima  
BIN URI: BOLD: AAF8978



[Lateral]  
Acanalonia bivittata  
BIN URI: BOLD: AAN8422



[Lateral]  
Aleyrodidae  
BIN URI: BOLD: AAZ8499



[Dorsal]  
Acyrthosiphon pisum  
BIN URI: BOLD: AAB1787



[Dorsal]  
Hemiptera  
BIN URI: BOLD: AAN8408



[Lateral]  
Aphis nerii  
BIN URI: BOLD: AAC1372



[Dorsal]  
Hemiptera  
BIN URI: BOLD: AAB7937



[Dorsal]  
Hyperomyzus  
BIN URI: BOLD: AAY6754



[Lateral]  
Nearctaphis crataegifoliae  
BIN URI: BOLD: ACF1270



[Dorsal]  
Pemphigus bursarius  
BIN URI: BOLD: AAD1826



[Dorsal]  
Rhopalosiphum padi  
BIN URI: BOLD: ACF2924



[Lateral]  
Therioaphis trifolii  
BIN URI: BOLD: AAA3759



[Dorsal]  
Uroleucon (Uromelan)  
BIN URI: BOLD: ACE6183



[Lateral]  
Aphidinae  
BIN URI: BOLD: ACP8041



[Lateral]  
Aphidinae  
BIN URI: BOLD: AAV4767



[Lateral]  
Cercopidae  
BIN URI: BOLD: AAG8827



[Dorsal]  
Balclutha abdominalis  
BIN URI: BOLD: AAN8243



[Lateral]  
Empoasca  
BIN URI: BOLD: AAN8250



[Lateral]  
Empoasca  
BIN URI: BOLD: ABZ4247



[Dorsal]  
Erythroneura vulnerata  
BIN URI: BOLD: AAO8361



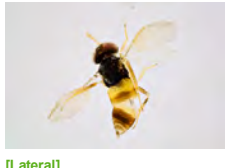
[Lateral]  
Eupteryx flavoscuta  
BIN URI: BOLD: ABV2555



[Lateral]  
Typhlocyba  
BIN URI: BOLD: ABA54828



[Dorsal]  
Stenodema pilosipes  
BIN URI: BOLD: AAE1941



[Lateral]  
Aphelinus abdominalis  
BIN URI: BOLD: ACB7073



[Lateral]  
Apis mellifera  
BIN URI: BOLD: AAA2326



[Lateral]  
Aphidius rhopalosiphi  
BIN URI: BOLD: AAD6802



[Lateral]  
Aphidinae  
BIN URI: BOLD: AAA4188



[Lateral]  
Glyptapanteles sp.  
BIN URI: BOLD: AAA4781



[Lateral]  
Meteorus  
BIN URI: BOLD:AAG8408



[Lateral]  
Protapanteles  
BIN URI: BOLD:AAA4782



[Lateral]  
Braconidae  
BIN URI: BOLD:AAy6829



[Lateral]  
Braconidae  
BIN URI: BOLD:AAG1352



[Lateral]  
Hymenoptera  
BIN URI: BOLD:AAO2112



[Dorsal]  
Belyta validicomis  
BIN URI: BOLD:AAU8736



[Dorsal]  
Trichopria basalis  
BIN URI: BOLD:AAN8179



[Lateral]  
Diapriidae  
BIN URI: BOLD:AAP6717



[Lateral]  
Myrmica  
BIN URI: BOLD:AAD0829



[Lateral]  
Cymodusa distincta  
BIN URI: BOLD:ABZ4363



[Lateral]  
Campopleginae  
BIN URI: BOLD:AAF8320



[Lateral]  
Lissonota coracina  
BIN URI: BOLD:AAG7794



[Lateral]  
Mesochorus americanus  
BIN URI: BOLD:AAy6795



[Lateral]  
Hymenoptera  
BIN URI: BOLD:AAZ0182



[Lateral]  
Ichneumonidae  
BIN URI: BOLD:AAG6783



[Lateral]  
Ichneumonidae  
BIN URI: BOLD:AAG7714



[Lateral]  
Tromatobia variabilis  
BIN URI: BOLD:AAD5195



[Lateral]  
Ichneumonidae  
BIN URI: BOLD:ABA6173



[Lateral]  
Gonatocerus morrilli  
BIN URI: BOLD:AAU9165



[Lateral]  
Ooctonus notatus  
BIN URI: BOLD:ABA3660



[Lateral]  
Ooctonus  
BIN URI: BOLD:AAy9180



[Lateral]  
Hymenoptera  
BIN URI: BOLD:ABX2601



[Lateral]  
Myrmidae  
BIN URI: BOLD:ACC1406



[Dorsal]  
Hymenoptera  
BIN URI: BOLD:ABZ8208



[Lateral]  
Synopeas  
BIN URI: BOLD:AAU8605



[Lateral]  
Hymenoptera  
BIN URI: BOLD:AAG8271



[Lateral]  
Platygasteridae  
BIN URI: BOLD:AAU8342



[Lateral]  
Platygasterinae  
BIN URI: BOLD:ACD3193



[Lateral]  
Polistes dominula  
BIN URI: BOLD:AAB7105



[Lateral]  
Polistes fuscatus  
BIN URI: BOLD:AAA6508



[Dorsal]  
Bucculatrix pomifoliella  
BIN URI: BOLD:AAD2085



[Dorsal]  
Depressaria depressana  
BIN URI: BOLD:AAE7397



[Dorsal]  
Parectopa occulta  
BIN URI: BOLD:AAD5802



[Lateral]  
Melanoplus  
BIN URI: BOLD:AAA4555



[Lateral]  
Oecanthus  
BIN URI: BOLD:AAF9891



[Lateral]  
Psocoptera  
BIN URI: BOLD:AAF1729



[Lateral]  
Psocoptera  
BIN URI: BOLD:AAM8930



[Lateral]  
Limnephilus submonilifer  
BIN URI: BOLD:AAA3080

