

# School Malaise Trap Program

## Species Image Library

The images of the species collected in your Malaise trap are shown below. A single representative for each species was selected to be photographed; in some cases, only a damaged specimen was available.

Re-render images:  per row

300 Records Per Page - Pages: 1



[Dorsal]  
*Erigone aletris*  
BIN URI: BOLD:AAD1746



[Dorsal]  
*Tenuiphantes tenuis*  
BIN URI: BOLD:AAI0794



[Dorsal]  
*Salticus scenicus*  
BIN URI: BOLD:AAC9042



[Dorsal]  
Ascidiae  
BIN URI: BOLD:ACF8020



[Dorsal]  
Phytoseiidae  
BIN URI: BOLD:ACP9397



[Dorsal]  
Arachnida  
BIN URI: BOLD:ABV8662



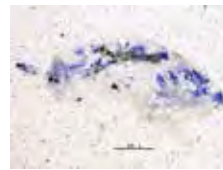
[Dorsal]  
Phytoseiidae  
BIN URI: BOLD:ACC8234



[Dorsal]  
Opliones  
BIN URI: BOLD:AAH7063



Trombidiformes  
BIN URI: BOLD:ACP6080



[Lateral]  
Entomobryidae  
BIN URI: BOLD:ACD9444



[Lateral]  
Entomobryomorpha  
BIN URI: BOLD:ACI5558



[Dorsal]  
Bourletellidae  
BIN URI: BOLD:AAAN4906



[Lateral]  
Collembola  
BIN URI: BOLD:AAAN6521



[Dorsal]  
*Calyptomerus dubius*  
BIN URI: BOLD:AAAP9145



[Dorsal]  
*Psyllobora vigintimaculata*  
BIN URI: BOLD:ACN4256



[Dorsal]  
*Stethorus punctillum*  
BIN URI: BOLD:AAAN6149



[Dorsal]  
*Cartodere bifasciatus*  
BIN URI: BOLD:AAW4095



[Lateral]  
Corticaria  
BIN URI: BOLD:AAAN6154



[Dorsal]  
Latridiidae  
BIN URI: BOLD:ACP0853



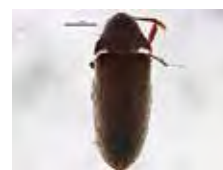
[Dorsal]  
*Cartodere nodifer*  
BIN URI: BOLD:AAO0516



[Dorsal]  
Aleocharinae  
BIN URI: BOLD:ACP6255



[Dorsal]  
*Atheta hansseni*  
BIN URI: BOLD:ABA6362



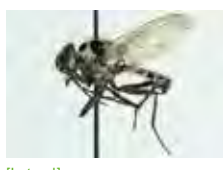
[Dorsal]  
*Pactus hornii*  
BIN URI: BOLD:ACC3034



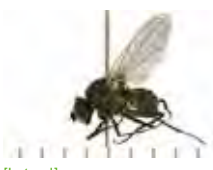
[Lateral]  
*Cerodontha muscina*  
BIN URI: BOLD:AAG4791



[Lateral]  
Anisopodidae  
BIN URI: BOLD:AAL7534



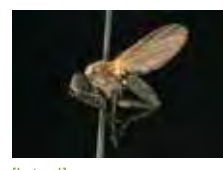
[Lateral]  
*Anthomyia pluvialis*  
BIN URI: BOLD:AAQ0583



[Lateral]  
Anthomyiidae  
BIN URI: BOLD:AAG2467



[Lateral]  
Anthomyiidae  
BIN URI: BOLD:AAAN5497



[Lateral]  
Diptera  
BIN URI: BOLD:AAG2462



[Lateral]  
Anthomyza  
BIN URI: BOLD:AAV7621



[Lateral]  
*Pollenia griseotomentosa*  
BIN URI: BOLD:AAI2766



[Lateral]  
Diptera  
BIN URI: BOLD:AAG6745



[Lateral]  
Cecidomyiidae  
BIN URI: BOLD:ACR1376



[Lateral]  
Cecidomyiidae  
BIN URI: BOLD:ABV9274



[Lateral]  
Cecidomyiidae  
BIN URI: BOLD:ACP9278



[Dorsal]  
Ceratopogonidae  
BIN URI: BOLD:AA5162



[Lateral]  
Chamaemyiidae  
BIN URI: BOLD:AAG6951



[Lateral]  
Chironomidae  
BIN URI: BOLD:AAB4657



[Dorsal]  
Chironomidae  
BIN URI: BOLD:AAJ4143



[Lateral]  
*Cricotopus penniger*  
BIN URI: BOLD:AAP5929



[Lateral]  
*Cricotopus sylvestris*  
BIN URI: BOLD:AAA5299



[Lateral]  
Chironomidae  
BIN URI: BOLD:ABU5525



[Lateral]  
*Phaenopsectra*  
BIN URI: BOLD:ACI3107



[Lateral]  
*Procladius denticulatus*  
BIN URI: BOLD:AAF6798



[Lateral]  
*Tanytarsus*  
BIN URI: BOLD:ACP9312



[Lateral]  
Chironomidae  
BIN URI: BOLD:AA5342



[Lateral]  
Chironominae  
BIN URI: BOLD:ACP8609



[Lateral]  
Chironomidae  
BIN URI: BOLD:AAG5457



[Lateral]  
Orthocladiinae  
BIN URI: BOLD:ACP9389



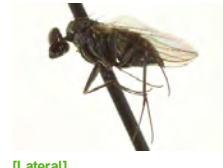
[Lateral]  
*Oscinella* sp. 4  
BIN URI: BOLD:ABZ3875



[Lateral]  
Oscinellinae  
BIN URI: BOLD:AAH4180



[Lateral]  
*Thaumatomyia trifasciata*  
BIN URI: BOLD:AAG4705



[Lateral]  
*Medetera* sp. SEB5  
BIN URI: BOLD:ACA1124



[Lateral]  
Ephyrididae  
BIN URI: BOLD:AAG6932



[Lateral]  
Empididae  
BIN URI: BOLD:AAF9771



[Lateral]  
*Dicranomyia* (*Dicranomyia*)  
*longipennis*  
BIN URI: BOLD:AAP8635



[Lateral]  
Tipulidae  
BIN URI: BOLD:AAU6544



[Lateral]  
*Coenosia*  
BIN URI: BOLD:ABV1242



[Lateral]  
*Phaonia tuguriorum*  
BIN URI: BOLD:AAL2750



[Lateral]  
Mycetophilidae  
BIN URI: BOLD:AAM9013



[Lateral]  
Psychodidae  
BIN URI: BOLD:AAP4581



[Lateral]  
Psychodidae  
BIN URI: BOLD:AAF9306



[Lateral]  
Sarcophagidae  
BIN URI: BOLD:AAG3629



[Lateral]  
*Scathophaga furcata*  
BIN URI: BOLD:AAH0022



[Lateral]  
Scatopsidae  
BIN URI: BOLD:ACP9147



[Lateral]  
Sciariidae  
BIN URI: BOLD:AAH3939



[Lateral]  
*Lycoriella castanescens*  
BIN URI: BOLD:ABA1215



[Lateral]  
Sciaridae  
BIN URI: BOLD:AA6412



[Lateral]  
Sciaridae  
BIN URI: BOLD:ACP8811



[Lateral]  
Sciaridae  
BIN URI: BOLD:AAP6472



[Lateral]  
Sciaridae  
BIN URI: BOLD:ACP5219



[Lateral]  
Sciaridae  
BIN URI: BOLD:ACP7816



[Lateral]  
*Sargus bipunctatus*  
BIN URI: BOLD:ACI9008



[Lateral]  
Syrphidae  
BIN URI: BOLD:AAB2384



[Lateral]  
*Sphaerophoria*  
BIN URI: BOLD:AAA7374



[Lateral]  
*Siphona* nr. *geniculata* sp. 1  
BIN URI: BOLD:AAG2108



[Lateral]  
Tipulidae  
BIN URI: BOLD:AAF9041



[Lateral]  
*Tipula paludosa*  
BIN URI: BOLD:AAE7386



[Dorsal]  
*Orius majusculus*  
BIN URI: BOLD:ABA5781



[Dorsal]  
*Aphid spiraecola*  
BIN URI: BOLD:AAA4183



[Lateral]  
*Capitophorus elaeagni*  
BIN URI: BOLD:AAE3015



[Lateral]  
Aphididae  
BIN URI: BOLD:AAB9332



[Lateral]  
*Nearctaphis bakeri*  
BIN URI: BOLD:AAD0902



[Lateral]  
*Rhopalosiphum nymphaeae*  
BIN URI: BOLD:AAE3554



[Dorsal]  
*Rhopalosiphum padi*  
BIN URI: BOLD:ACF2924



[Dorsal]  
*Rhopalosiphum padi*  
BIN URI: BOLD:AAA9899



[Dorsal]  
Hemiptera  
BIN URI: BOLD:AAO8340



[Lateral]  
*Empoasca decipiens*  
BIN URI: BOLD:AA6741



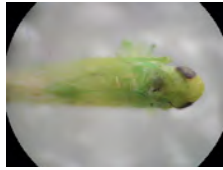
[Lateral]  
Cicadellidae  
BIN URI: BOLD:ACI4025



[Lateral]  
Typhlocybinae  
BIN URI: BOLD:ACC4174



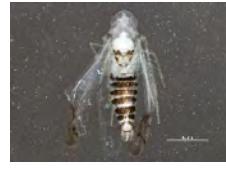
[Lateral]  
*Empoasca*  
BIN URI: BOLD:ACP7464



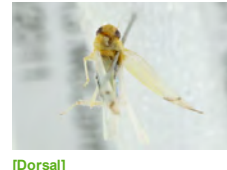
[Dorsal]  
Hemiptera  
BIN URI: BOLD:AA8406



[Lateral]  
*Idiocerus bovinus*  
BIN URI: BOLD:ACA9914



[Dorsal]  
Cicadellidae  
BIN URI: BOLD:ACC4476



[Dorsal]  
Hemiptera  
BIN URI: BOLD:ABZ9658



[Dorsal]  
Aphalarinae  
BIN URI: BOLD:ACP7833



[adult]  
Coccophaginae  
BIN URI: BOLD:ABA9128



[Lateral]  
*Apanteles carpatius*  
BIN URI: BOLD:AAC2372



[Lateral]  
Hymenoptera  
BIN URI: BOLD:AAC7809



[Lateral]  
*Belyta validicornis*  
BIN URI: BOLD:ABZ3101



[Lateral]  
*Blacus stelfoxi*  
BIN URI: BOLD:AAZ9744



[Lateral]  
*Dinotrema jft01*  
BIN URI: BOLD:AAA7636



[Lateral]  
*Ephedrus*  
BIN URI: BOLD:ACP8230



[Lateral]  
Hymenoptera  
BIN URI: BOLD:AAU8585



[Lateral]  
Hymenoptera  
BIN URI: BOLD:AAG1421



[Dorsal]  
*Belyta validicornis*  
BIN URI: BOLD:AAU8736



[Dorsal]  
*Trichopria verticillata*  
BIN URI: BOLD:ACH3554



[Lateral]  
Diapriidae  
BIN URI: BOLD:ACJ5673



[Dorsal]  
Hymenoptera  
BIN URI: BOLD:ACJ7225



[Lateral]  
Eulophidae  
BIN URI: BOLD:ACE1844



[Lateral]  
Eulophidae  
BIN URI: BOLD:ACD8255



[Lateral]  
Hymenoptera  
BIN URI: BOLD:ACK2130



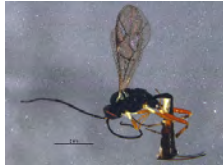
[Lateral]  
Formica transmontanis  
BIN URI: BOLD:AAI5674



[Lateral]  
Lasius  
BIN URI: BOLD:AAE1550



[Lateral]  
Charitopes albilabris  
BIN URI: BOLD:AAH1554



[Lateral]  
Diadegma  
BIN URI: BOLD:ACP9048



[Lateral]  
Diadegma  
BIN URI: BOLD:ACN7003



[Lateral]  
Enytus apostata  
BIN URI: BOLD:AAG5797



[Lateral]  
Megastylus orbitator  
BIN URI: BOLD:AAK5985



[Lateral]  
Mesoleptus congener  
BIN URI: BOLD:ACF0492



[Lateral]  
Orthocentrinae  
BIN URI: BOLD:AAD0245



[Lateral]  
Diadegma sp.  
BIN URI: BOLD:AAZ8184



[Lateral]  
Megaspilidae  
BIN URI: BOLD:ACN0444



[Lateral]  
Anagrus  
BIN URI: BOLD:AAU9004



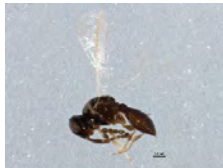
[Lateral]  
Mymaridae  
BIN URI: BOLD:ACE1230



[Lateral]  
Mymaridae  
BIN URI: BOLD:ACP7781



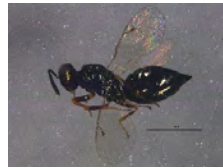
[Dorsal]  
Telenomus  
BIN URI: BOLD:AAU9437



[Lateral]  
Platygastriidae  
BIN URI: BOLD:ABW3192



[Lateral]  
Platygastriidae  
BIN URI: BOLD:ACP8570



[Lateral]  
Pteromalus  
BIN URI: BOLD:ACP8174



[Lateral]  
Trichogrammatidae  
BIN URI: BOLD:ACM1660



[Lateral]  
Vespa pensylvanica  
BIN URI: BOLD:AAG8042



[Lateral]  
Valenzuela  
BIN URI: BOLD:AAP2603



[Lateral]  
Psocoptera  
BIN URI: BOLD:AAZ6680



[Lateral]  
Ectopsocidae  
BIN URI: BOLD:ACM7825



[Dorsal]  
Psocoptera  
BIN URI: BOLD:AAZ6687



[Lateral]  
Psocoptera  
BIN URI: BOLD:AAZ8452



[Dorsal]  
Hoplothrips japonicus  
BIN URI: BOLD:AAI8341



[Lateral]  
Limnephilus concolor  
BIN URI: BOLD:AAD9460