

School Malaise Trap Program

Species Image Library

The images of the species collected in your Malaise trap are shown below. A single representative for each species was selected to be photographed; in some cases, only a damaged specimen was available.

Re-render images: per row

300 Records Per Page - Pages: 1



[Dorsal]
Pardosa fuscula
BIN URI: BOLD:AAB3890



[Dorsal]
Philodromus peninsulanus
BIN URI: BOLD:AAA9991



[Dorsal]
Tetragnatha versicolor
BIN URI: BOLD:AAB8024



[Dorsal]
Anystidae
BIN URI: BOLD:ABW2639



[Dorsal]
Anystidae
BIN URI: BOLD:AAM7961



[Lateral]
Collembola
BIN URI: BOLD:AAB7914



[Dorsal]
Psyllodes cucullata
BIN URI: BOLD:ABX3225



[Dorsal]
Dorytomus
BIN URI: BOLD:ABA0187



[Dorsal]
Cyphon laevis
BIN URI: BOLD:AAG3633



[Dorsal]
Atheta
BIN URI: BOLD:ABA9956



[Lateral]
Acartophthalmus nigrinus
BIN URI: BOLD:AAN6240



[Lateral]
Anthomyiidae
BIN URI: BOLD:ACP6334



[Lateral]
Bibionidae
BIN URI: BOLD:ABV0350



[Lateral]
Protophormia terraenovae
BIN URI: BOLD:AAC9614



[Lateral]
Cecidomyiidae
BIN URI: BOLD:ABX0280



[Lateral]
Ceratopogonidae
BIN URI: BOLD:AAN5172



[Lateral]
Cricotopus tibialis
BIN URI: BOLD:AAA5300



[Lateral]
Chironomidae
BIN URI: BOLD:AAP5921



[Lateral]
Cyphomella cornea
BIN URI: BOLD:AAI9470



[Lateral]
Microspectra polita
BIN URI: BOLD:AAC4403



[Lateral]
Nanocladius anderseni
BIN URI: BOLD:AAC3042



[Lateral]
Orthocladus
BIN URI: BOLD:ACP9255



[Lateral]
Chironomidae
BIN URI: BOLD:AAB2644



[Dorsal]
Paracladopelma winnelli
BIN URI: BOLD:AAK4963



[Lateral]
Paraphaenocladus impensus
BIN URI: BOLD:AAC4197



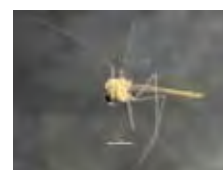
[Dorsal]
Rheopelopia ornata
BIN URI: BOLD:AAF7638



[Lateral]
Smittia sp. 16ES
BIN URI: BOLD:AAB0375



[Lateral]
Synorthocladus semivirens
BIN URI: BOLD:AAH3505



[Lateral]
Chironomidae
BIN URI: BOLD:ACJ3722



[Lateral]
Thienemanniella
BIN URI: BOLD:AAD5253



[Lateral]
Tvetenia
BIN URI: BOLD: AAB7489



[Lateral]
Campsicnemus alexanderi
BIN URI: BOLD: AAG9638



[Lateral]
Suillia nemorum
BIN URI: BOLD: AAG0469



[Lateral]
Lauxaniidae
BIN URI: BOLD: AAP6482



[Lateral]
Dcranomyia
BIN URI: BOLD: AAI1345



[Lateral]
Coenosia frisoni
BIN URI: BOLD: AAL9581



[Lateral]
Muscidae
BIN URI: BOLD: AAB8818



[Lateral]
Myospila meditatunda
BIN URI: BOLD: AAD7145



[Lateral]
Spilogona leucogaster
BIN URI: BOLD: AAE2782



[Lateral]
Muscidae
BIN URI: BOLD: AAG1704



[Lateral]
Brevicornu sp. CJB11
BIN URI: BOLD: AAL9143



[Lateral]
Mycetophila
BIN URI: BOLD: ACD1714



[Lateral]
Mycetophilidae
BIN URI: BOLD: AAG4944



[Lateral]
Phoridae
BIN URI: BOLD: AAG3248



[Lateral]
Phoridae
BIN URI: BOLD: AAG3234



[Lateral]
Phoridae
BIN URI: BOLD: AAZ6701



[Lateral]
Phoridae
BIN URI: BOLD: AAG3233



[Lateral]
Phoridae
BIN URI: BOLD: AAU6529



[Lateral]
Phoridae
BIN URI: BOLD: AAG3360



[Lateral]
Phoridae
BIN URI: BOLD: AAN8700



[Lateral]
Phoridae
BIN URI: BOLD: ACB6729



[Lateral]
Phoridae
BIN URI: BOLD: AAP6424



[Lateral]
Phoridae
BIN URI: BOLD: ABV3315



[Lateral]
Phoridae
BIN URI: BOLD: AAG3235



[Lateral]
Psychodidae
BIN URI: BOLD: AAP4581



[Lateral]
Sciaridae
BIN URI: BOLD: ACF0303



[Lateral]
Sciaridae
BIN URI: BOLD: ACG5028



[Lateral]
Sciaridae
BIN URI: BOLD: AAL7869



[Lateral]
Sciaridae
BIN URI: BOLD: AAP4769



[Lateral]
Sciaridae
BIN URI: BOLD: AAP8780



[Lateral]
Pherbellia vitalis
BIN URI: BOLD: AAG6845



[Lateral]
Simulium vittatum complex
BIN URI: BOLD: AAA4121



[Lateral]
Simulium verecundum complex
BIN URI: BOLD: AAA1697



[Lateral]
Simulium tuberosum complex
BIN URI: BOLD: AAA9710



[Lateral]
Sphaerophoria
BIN URI: BOLD: AAA7374



[Lateral]
Tachina
BIN URI: BOLD: ACC0710



[Lateral]
Callipterinella
BIN URI: BOLD: ACB2802



[Lateral]
Chaitophorus stevensis
BIN URI: BOLD: AAH2877



[Dorsal]
Cnara pruinosa
BIN URI: BOLD: ACP8153



[Lateral]
Myzaphis rosarum
BIN URI: BOLD: AAG9749



[Lateral]
Nearctaphis bakeri
BIN URI: BOLD: AAD0902



[Lateral]
Ceratagallia viator
BIN URI: BOLD: AAG2875



[Dorsal]
Colladonus
BIN URI: BOLD:ABX9314



[Lateral]
Clastoptera obtusa
BIN URI: BOLD:AAG8823



[Lateral]
Adelphocoris lineolatus
BIN URI: BOLD:ACE7444



[Lateral]
Trioza
BIN URI: BOLD:AAF8602



[Lateral]
Aleiodes
BIN URI: BOLD:ACO1868



[Lateral]
Aleiodes
BIN URI: BOLD:AAG1404



[Lateral]
Aphidius
BIN URI: BOLD:AAD7086



[Lateral]
Glyptapanteles sp.
BIN URI: BOLD:AAA4783



[Lateral]
Hymenoptera
BIN URI: BOLD:ACH0612



[Lateral]
Tetrastichinae
BIN URI: BOLD:ACP8318



[Lateral]
Alloxysta
BIN URI: BOLD:ACB2551



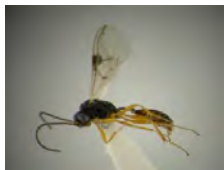
[Lateral]
Hymenoptera
BIN URI: BOLD:ACC6611



[Lateral]
Formica glacialis
BIN URI: BOLD:AAA1468



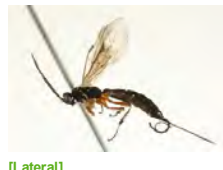
[Lateral]
Formica subnuda
BIN URI: BOLD:ABY5760



[Lateral]
Barycnemis gravipes
BIN URI: BOLD:AAC0868



[Lateral]
Hymenoptera
BIN URI: BOLD:AAA6280



[Lateral]
Scambus jft01
BIN URI: BOLD:ACE6645



[Lateral]
Stenomacrus jft09
BIN URI: BOLD:AAF3476



[Lateral]
Stenomacrus
BIN URI: BOLD:ACE4848



[Lateral]
Ichneumonidae
BIN URI: BOLD:AAQ2692



[Lateral]
Hymenoptera
BIN URI: BOLD:AAM9125



[Lateral]
Myrmaridae
BIN URI: BOLD:ACP9674



[Lateral]
Platygastridae
BIN URI: BOLD:ACE2768



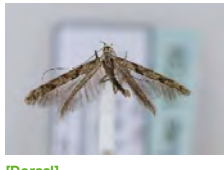
[Lateral]
Telenomus
BIN URI: BOLD:AAU9339



[Lateral]
Hymenoptera
BIN URI: BOLD:ACG6513



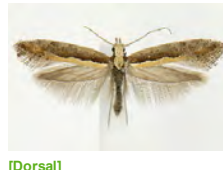
[Dorsal]
Filatima xanthuris
BIN URI: BOLD:AAG5285



[Dorsal]
Caloptilia cuculipennella
BIN URI: BOLD:AAF8460



[Dorsal]
Phyllocnistis populiella
BIN URI: BOLD:AAA8924



[Dorsal]
Plutella xylostella
BIN URI: BOLD:AAA1513



[Dorsal]
Epinotia crenana
BIN URI: BOLD:AAE1755



[Dorsal]
Epinotia nisella
BIN URI: BOLD:AAA7528



[Dorsal]
Epinotia radicana
BIN URI: BOLD:AAA9458



[Lateral]
Chrysoperla
BIN URI: BOLD:AAB0373



[Dorsal]
Haplothrips
BIN URI: BOLD:AAG2812



[Lateral]
Glossosoma velonum
BIN URI: BOLD:AAC1896



[Dorsal]
Hydroptila albicornis
BIN URI: BOLD:ACP8128



[Dorsal]
Ithytrichia sp. GM01
BIN URI: BOLD:AAQ3188



[Lateral]
Neotrichia RB sp. US1
BIN URI: BOLD:AAx6541

