

School Malaise Trap Program

Species Image Library

The images of the species collected in your Malaise trap are shown below. A single representative for each species was selected to be photographed; in some cases, only a damaged specimen was available.

Re-render images : per page

300 Images Per Page - Pages : 1



BIOUG05509-F10 [Lateral]
Hymenoptera



BIOUG05502-B08 [Lateral]
Formica glacialis



BIOUG05537-A01 [Lateral]
Formica schauffusi



BIOUG05502-A07 [Lateral]
Prenolepis imparis



BIOUG05533-C06 [Lateral]
Megaspilidae



BIOUG05559-H09 [Lateral]
Megaspilidae



BIOUG05521-B02 [Lateral]
Xyela julii



BIOUG05512-A02 [Dorsal]
Anthicidae



BIOUG05520-C07 [Lateral]
Dibolia borealis



BIOUG05551-B09 [Dorsal]
Phyllotreta cruciferae



BIOUG05502-B06 [Lateral]
Trachyphloeus bifoveolatus



BIOUG05507-H02 [Dorsal]
Latridiidae



BIOUG05509-H08 [Dorsal]
Cortinicara gibbosa



BIOUG05630-F06 [Lateral]
Philonthus



BIOUG05509-G12 [Dorsal]
Tachyporus nitidulus



BIOUG05532-G09 [Dorsal]
Trixagus



BIOUG05507-E08 [Dorsal]
Trixagus carinicollis



BIOUG05534-C11 [Dorsal]
Forficula auricularia



BIOUG05511-H05 [Lateral]
Anisopodidae



BIOUG05501-A01 [Lateral]
Delia antiqua



BIOUG05501-A02 [Lateral]
Hylemya



BIOUG05502-H03 [Lateral]
Pollenia vagabunda



BIOUG05503-B09 [Lateral]
Cecidomyiidae



BIOUG05631-D11 [Lateral]
Cecidomyiidae



BIOUG05503-H02 [Lateral]
Chironomidae



BIOUG05555-G07 [Lateral]
Chironomidae



BIOUG05505-F01 [Lateral]
Chironomidae



BIOUG05503-B06 [Lateral]
Chironomidae



BIOUG05516-G06 [Lateral]
Chironomidae



BIOUG05503-A06 [Lateral]
Chironomidae



BIOUG05514-B04 [Lateral]
Chironomidae



BIOUG05576-E08 [Lateral]
Chironomidae



BIOUG05503-A11 [Lateral]
Chironomidae



BIOUG05545-H05 [Lateral]
Chironomidae



BIOUG05503-A08 [Lateral]
Bryophaenocladus



BIOUG05563-D08 [Lateral]
Chironomus acidophilus



BIOUG05514-A08 [Lateral]
Cricotopus triannulatus



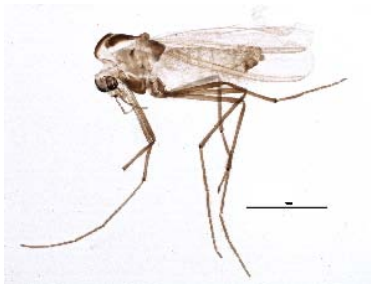
BIOUG05582-B11 [Lateral]
Diamesa



BIOUG05503-D04 [Lateral]
Orthocladus dorenius



BIOUG05514-D06 [Lateral]
Paraphaenocladus impensus



BIOUG05522-C06 [Lateral]
Paratanytarsus laccophilus



BIOUG05516-G04 [Lateral]
Psectrocladius cf. limbatellus



BIOUG05503-E12 [Lateral]
Smittia



BIOUG05503-E10 [Lateral]
Smittia



BIOUG05503-A03 [Lateral]
Smittia



BIOUG05570-H09 [Lateral]
Smittia edwardsi



BIOUG05502-G10 [Lateral]
Thienemanniella xena



BIOUG05541-C12 [Lateral]
Oecothoa nr. fenestralis



BIOUG05502-D11 [Lateral]
Symplecta



BIOUG05521-A04 [Lateral]
Phoridae



BIOUG05522-A07 [Lateral]
Megaselia



BIOUG05508-B03 [Lateral]
Psychodidae



BIOUG05538-G08 [Lateral]
Sciaridae



BIOUG05532-F06 [Lateral]
Sciaridae



BIOUG05503-C12 [Lateral]
Sciaridae



BIOUG05689-F03 [Lateral]
Scatopsiara



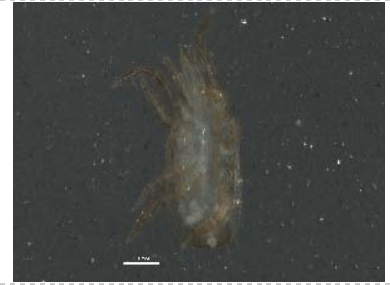
BIOUG05506-G09 [Lateral]
Sphaeroceridae



BIOUG05596-D12 [Lateral]
Chrysoperia rufilabris



BIOUG05508-A07 [Dorsal]
Ascidae



BIOUG05505-C08 [Ventral]
Digamasellidae



BIOUG05545-F10 [Lateral]
Grammonota angusta



BIOUG05631-B01 [Dorsal]
Grammonota capitata



BIOUG05515-H02 [Dorsal]
Pardosa milvina



BIOUG05631-A12 [Dorsal]
Philodromus mineri



BIOUG05512-B12 [Dorsal]
Tetragnatha versicolor



BIOUG05516-D01 [Lateral]
Entomobrya



BIOUG05516-D06 [Lateral]
Entomobrya nivalis



BIOUG05578-G03 [Lateral]
Allocapnia mystica



BIOUG05530-F01 [Lateral]
Strophopteryx fasciata



BIOUG05505-B11 [Dorsal]
Taeniothrips inconsequens



BIOUG05554-D09 [Lateral]
Cicadellidae