

School Malaise Trap Program

Species Image Library

The images of the species collected in your Malaise trap are shown below. A single representative for each species was selected to be photographed; in some cases, only a damaged specimen was available.

Re-render images : per page

300 Images Per Page - Pages : 1



BIOUG05509-F06 [Lateral]
Braconidae



BIOUG05599-H06 [Lateral]
Diapriidae



BIOUG05507-D11 [Lateral]
Diapriidae



BIOUG05599-G06 [Lateral]
Lasius



BIOUG05507-D08 [Lateral]
Lasius neoniger



BIOUG05551-D11 [Lateral]
Ichneumonidae



BIOUG05578-D08 [Lateral]
Ichneumonidae



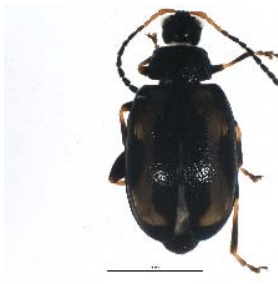
BIOUG05599-G09 [Lateral]
Ichneumonidae



BIOUG05528-A10 [Dorsal]
Chaetocnema concinna



BIOUG05551-B09 [Dorsal]
Phyllotreta cruciferae



BIOUG05520-C10 [Dorsal]
Phyllotreta striolata



BIOUG05509-G06 [Lateral]
Hylesinus aculeatus



BIOUG05509-H09 [Dorsal]
Latridiidae



BIOUG05523-B12 [Dorsal]
Glischrochilus quadrisignatus



BIOUG05533-F03 [Dorsal]
Phalacridae



BIOUG05510-A05 [Dorsal]
Cyphon laeipennis



BIOUG05551-C02 [Lateral]
Amischa analis



BIOUG05516-B10 [Dorsal]
Anotylus tetracaratus



BIOUG05569-C12 [Dorsal]
Atheta hansseni



BIOUG05599-E08 [Lateral]
Gabrius subnigrifolus



BIOUG05509-G10 [Lateral]
Tachyporus chrysomelinus



BIOUG05604-E05 [Lateral]
Cerodontha dorsalis



BIOUG05501-A01 [Lateral]
Delia antiqua



BIOUG05578-E04 [Lateral]
Lasiomma



BIOUG05518-B12 [Lateral]
Pollenia angustigena



BIOUG05523-F06 [Lateral]
Pollenia griseotomentosa



BIOUG05501-D07 [Lateral]
Pollenia pediculata



BIOUG05518-B06 [Lateral]
Pollenia rudis



BIOUG05507-C10 [Lateral]
Cecidomyiidae



BIOUG05503-B03 [Lateral]
Cecidomyiidae



BIOUG05503-B09 [Lateral]
Cecidomyiidae



BIOUG05503-H02 [Lateral]
Chironomidae



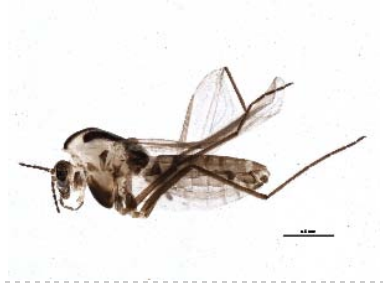
BIOUG05503-A11 [Lateral]
Chironomidae



BIOUG05532-F02 [Lateral]
Chironomidae



BIOUG05503-B06 [Lateral]
Chironomidae



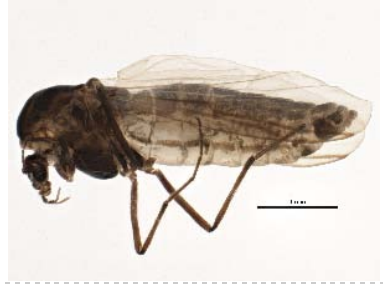
BIOUG05514-B08 [Lateral]
Chironomidae



BIOUG05508-C09 [Lateral]
Chironomidae



BIOUG05514-B04 [Lateral]
Chironomidae



BIOUG05510-G12 [Lateral]
Chironomidae



BIOUG05519-H08 [Lateral]
Gymnometrioctenemus brumalis



BIOUG05520-A08 [Lateral]
Micropsectra



BIOUG05535-B06 [Lateral]
Orthocladius



BIOUG05517-F03 [Lateral]
Orthocladius oliveri



BIOUG05503-E10 [Lateral]
Smittia



BIOUG05503-E12 [Lateral]
Smittia



BIOUG05503-C01 [Lateral]
Smittia



BIOUG05508-A10 [Lateral]
Drosophilidae



BIOUG05503-C11 [Lateral]
Empididae



BIOUG05502-D11 [Lateral]
Symplecta



BIOUG05501-D10 [Lateral]
Helina rufitibia



BIOUG05534-F01 [Lateral]
Musca autumnalis



BIOUG05518-E02 [Lateral]
Muscina levida



BIOUG05504-A05 [Lateral]
Mycetophila



BIOUG05514-G10 [Lateral]
Megaselia



BIOUG05597-H08 [Lateral]
Prochyliza xanthostoma



BIOUG05501-A03 [Lateral]
Scathophaga furcata



BIOUG05501-A07 [Lateral]
Scathophaga stercoraria



BIOUG05503-F04 [Lateral]
Lycoriella castanescens



BIOUG05514-A04 [Lateral]
Scatopsiara atomaria



BIOUG05515-G09 [Lateral]
Themira nigricornis



BIOUG05501-D08 [Lateral]
Eupeodes americanus



BIOUG05565-A11 [Lateral]
Helophilus fasciatus



BIOUG05611-D08 [Lateral]
Syrphus rectus



BIOUG05513-F09 [Lateral]
Agonopterix pulvipennella



BIOUG05502-C10 [Lateral]
Dichomeris ligulella



BIOUG05515-B06 [Dorsal]
Plutella xylostella



BIOUG05536-E07 [Dorsal]
Philodromus rufus vibrans



BIOUG05534-C12 [Lateral]
Allocapnia vivipara



BIOUG05505-B11 [Dorsal]
Taeniothrips inconsequens



BIOUG05539-F04 [Dorsal]

Idiocerus



BIOUG05502-A09 [Dorsal]

Kleidocerys



BIOUG05501-H02 [Dorsal]

Nabis roseipennis