

School Malaise Trap Program

Species Image Library

The images of the species collected in your Malaise trap are shown below. A single representative for each species was selected to be photographed; in some cases, only a damaged specimen was available.

Re-render images: 3 per row



[Dorsal]
Anystidae
BIN URI: BOLD:AAM7964



[Dorsal]
Anystidae
BIN URI: BOLD:ABW5642



[Dorsal]
Trichoribates
BIN URI: BOLD:AAH2450



[Dorsal]
Cheiracanthium mildei
BIN URI: BOLD:AAB7601



[Dorsal]
Platycryptus undatus
BIN URI: BOLD:AAD1010



[Lateral]
Coleomegilla maculata
BIN URI: BOLD:AAD7604



[Dorsal]
Psyllobora vigintimaculata
BIN URI: BOLD:AAH3320



[Lateral]
Cyphon laevipennis
BIN URI: BOLD:AAG3633



[Lateral]
Habrocerus capillaricornis
BIN URI: BOLD:AAH0117



[Dorsal]
Quedius cruentus
BIN URI: BOLD:AAO1236



[Dorsal]
Trixagus carinicollis
BIN URI: BOLD:AA6148



[Lateral]
Curculionidae
BIN URI: BOLD:ACJ7409



[Dorsal]
Forticula auricularia-A
BIN URI: BOLD:AAG9897



[Lateral]
Cerodontha muscina
BIN URI: BOLD:AAF1051



[Dorsal]
Agromyzidae
BIN URI: BOLD:AAV4830



[Dorsal]
Syvicola punctatus
BIN URI: BOLD:AAL7534



[Lateral]
Cynomya cadaverina
BIN URI: BOLD:AAB0868



[Lateral]
Pollenia pediculata
BIN URI: BOLD:AAG6745



[Dorsal]
Cecidomyiidae
BIN URI: BOLD:AAH3671



[Lateral]
Cecidomyiidae
BIN URI: BOLD:AA5205



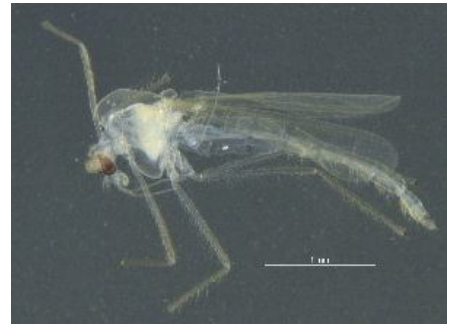
[Lateral]
Cecidomyiidae
BIN URI: BOLD:ABA1223



[Dorsal]
Chironomidae
BIN URI: BOLD:AAB7030



[Lateral]
Paraphaenocladus impensus
BIN URI: BOLD:AAC4197



[Lateral]
Tanytarsus guerlus
BIN URI: BOLD:AAC4525



[Ventral]
Micropsectra subletteorum
BIN URI: BOLD:AAF7088



[Lateral]
Chironomidae
BIN URI: BOLD:AAG0920



[Lateral]
Chironomidae
BIN URI: BOLD:AAM6246



[Lateral]
Cricotopus
BIN URI: BOLD:AA5318



[Lateral]
Chironomidae
BIN URI: BOLD:AA5342



[Lateral]
Chironomidae
BIN URI: BOLD:AA5356



[Lateral]
Heterotrissocladus
BIN URI: BOLD:AA5369



[Lateral]
Heterotrissocladus
BIN URI: BOLD:AA5836



[Lateral]
Chironomidae
BIN URI: BOLD:ACC4669



[Lateral]
Medetera jacula
BIN URI: BOLD:ACE1342



[Lateral]
Lonchaea
BIN URI: BOLD:AAG7070



[Lateral]
Helina evecia
BIN URI: BOLD:AAC2498



[Lateral]
Muscina pasuorum
BIN URI: BOLD:AAG1714



[Lateral]
Muscidae
BIN URI: BOLD:AAG1717



[Lateral]
Mycetophilidae
BIN URI: BOLD:ABV9015



[Lateral]
Diplonevra nitidula
BIN URI: BOLD:AAG3236



[Lateral]
Phoridae
BIN URI: BOLD:ABU5529



[Lateral]
Psychodidae
BIN URI: BOLD:AAP4712



[Lateral]
Diptera
BIN URI: BOLD:AAG6743



[Lateral]
Sciaridae
BIN URI: BOLD:AAM9252



[Lateral]
Diptera
BIN URI: BOLD:AAM9255



[Lateral]
Scatopsiara
BIN URI: BOLD: AAN6431



[Lateral]
Sciariidae
BIN URI: BOLD: AAN6433



[Lateral]
Collembola
BIN URI: BOLD: AAN6447



[Lateral]
Lycoriella castanescens
BIN URI: BOLD: ABA1215



[Lateral]
Sciariidae
BIN URI: BOLD: ABA6407



[Lateral]
Sciariidae
BIN URI: BOLD: ABU5520



[Lateral]
Sciariidae
BIN URI: BOLD: ABU5521



[Lateral]
Sepsis punctum
BIN URI: BOLD: AAG5639



[Lateral]
Tipula paludosa
BIN URI: BOLD: AAE7386



[Dorsal]
Paracadopelma winnelli
BIN URI: BOLD: AAK4963



[Dorsal]
Myzus cerasi
BIN URI: BOLD: AAB2802



[Lateral]
Nearctaphis crataegifoliae
BIN URI: BOLD: ACF1270



[Lateral]
Aphrophora quadrinotata
BIN URI: BOLD:AAZ2091



[Lateral]
Dikraneura
BIN URI: BOLD:AAZ2090



[Dorsal]
Hemiptera
BIN URI: BOLD:ABA5828



[Dorsal]
Cicadellidae
BIN URI: BOLD:ACJ7053



[Lateral]
Aphelinus varipes
BIN URI: BOLD:ABW3282



[Lateral]
Monoctonus
BIN URI: BOLD:AAA4188



[Lateral]
Microplitis jf109
BIN URI: BOLD:AAB8493



[Lateral]
Braconidae
BIN URI: BOLD:AAU8583



[Lateral]
Blacus stelfoxi
BIN URI: BOLD:AAZ9744



[Lateral]
Myrmica americana
BIN URI: BOLD:AAA1839



[Lateral]
Hymenoptera
BIN URI: BOLD:AAA9461



[Lateral]
Lasius
BIN URI: BOLD:AAB9126



[Lateral]
Lasius
BIN URI: BOLD:ABY9254



[Lateral]
Diplazon laetatorius
BIN URI: BOLD:AAD4214



[Lateral]
Campopleginae
BIN URI: BOLD:AAG5792



[Lateral]
Ichneumonidae
BIN URI: BOLD:AAH1932



[Lateral]
Ephialtes manifestator
BIN URI: BOLD:AAU8667



[Lateral]
Hymenoptera
BIN URI: BOLD:AAU8342



[Lateral]
Vespula germanica
BIN URI: BOLD:AAG9055



[Dorsal]
Formicidae
BIN URI: BOLD:AAF0890



[Lateral]
Hymenoptera
BIN URI: BOLD:AAU8573



[Lateral]
Platygastridae
BIN URI: BOLD:AAU8578



[Dorsal]
Belyta validicornis
BIN URI: BOLD:AAU8736



[Lateral]
Trimorus
BIN URI: BOLD:AAU9229



[Lateral]
Hymenoptera
BIN URI: BOLD:ACC8019



[Dorsal]
Syncopacma
BIN URI: BOLD:AAF9988



[Lateral]
Sunira bicolorago
BIN URI: BOLD:AAA4426



[Dorsal]
Hemerobius humulinus
BIN URI: BOLD:AAG0892



[Dorsal]
Psocoptera
BIN URI: BOLD:AAN8447



[Lateral]
Psocoptera
BIN URI: BOLD:ACE6318



[Dorsal]
Psocoptera
BIN URI: BOLD:ACJ6739