

# School Malaise Trap Program

## Species Image Library

The images of the species collected in your Malaise trap are shown below. A single representative for each species was selected to be photographed; in some cases, only a damaged specimen was available.

Re-render images :  per page

300 Images Per Page - Pages : 1



BIOUG05586-C04 [Dorsal]  
Hymenoptera



BIOUG05509-F10 [Lateral]  
Hymenoptera



BIOUG05501-H04 [Lateral]  
Ceratina



BIOUG05554-G02 [Lateral]  
Diaeretiella rapae



BIOUG05507-D11 [Lateral]  
Diapriidae



BIOUG05502-B08 [Lateral]  
Formica glacialis



BIOUG05507-D08 [Lateral]  
Lasius neoniger



BIOUG05533-C06 [Lateral]  
Megaspilidae



BIOUG05512-A02 [Dorsal]  
Anthicidae



BIOUG05516-C10 [Dorsal]  
Coccinellidae



BIOUG05509-H02 [Dorsal]  
Atomaria



BIOUG05586-D09 [Dorsal]  
Hydraenidae



BIOUG05567-B12 [Lateral]  
Latridiidae



BIOUG05509-G11 [Dorsal]  
Staphylinidae



BIOUG05557-A09 [Lateral]  
Staphylinidae



BIOUG05551-C02 [Lateral]  
Amischa analis



BIOUG05586-D02 [Dorsal]  
Anotylus



BIOUG05516-B10 [Dorsal]  
Anotylus tetracaratus



BIOUG05569-C12 [Dorsal]  
Atheta hansseni



BIOUG05586-D06 [Dorsal]  
Atheta palustris



BIOUG05509-G10 [Lateral]  
Tachyporus chrysomelinus



BIOUG05509-G12 [Dorsal]  
Tachyporus nitidulus



BIOUG05501-A01 [Lateral]  
Delia antiqua



BIOUG05512-E10 [Lateral]  
Aulacigaster neoleucopeza





BIOUG05549-D01 [Lateral]

*Calliphora vomitoria*



BIOUG05501-F08 [Lateral]

*Cynomya cadaverina*



BIOUG05518-B12 [Lateral]

*Pollenia angustigena*



BIOUG05501-D07 [Lateral]

*Pollenia pediculata*



BIOUG05503-B03 [Lateral]

Cecidomyiidae



BIOUG05507-C10 [Lateral]

Cecidomyiidae



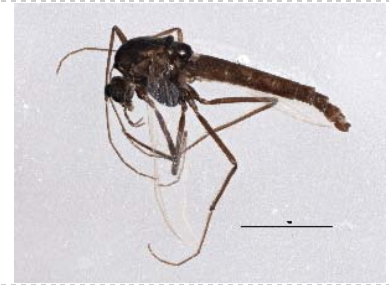
BIOUG05503-B09 [Lateral]

Cecidomyiidae



BIOUG05503-B06 [Lateral]

Chironomidae



BIOUG05503-H02 [Lateral]

Chironomidae



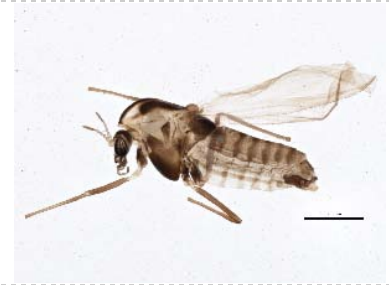
BIOUG05558-D08 [Lateral]

Chironomidae



BIOUG05586-F08 [Lateral]

Chironomidae



BIOUG05514-H06 [Lateral]

Chironomidae



BIOUG05503-B05 [Lateral]

Chironomidae



BIOUG05503-A11 [Lateral]

Chironomidae



BIOUG05522-A02 [Lateral]

Chironomidae



BIOUG05522-F12 [Lateral]  
Chironomidae



BIOUG05531-B08 [Lateral]  
Chironomidae



BIOUG05524-B02 [Lateral]  
Chironomidae



BIOUG05503-E12 [Lateral]  
Smittia



BIOUG05503-A08 [Lateral]  
Bryophaenocladus



BIOUG05502-A10 [Lateral]  
Chironomus cf. decorus



BIOUG05519-H08 [Lateral]  
Gymnometriocnemus brumalis



BIOUG05517-F03 [Lateral]  
Orthocladus oliveri



BIOUG05586-F01 [Lateral]  
Procladius



BIOUG05581-F11 [Lateral]  
Psectrocladius barbimanus



BIOUG05503-E10 [Lateral]  
Smittia



BIOUG05503-C01 [Lateral]  
Smittia



BIOUG05517-D05 [Lateral]  
Thienemanniella



BIOUG05502-G10 [Lateral]  
Thienemanniella xena



BIOUG05517-G09 [Lateral]  
Dolichopodidae

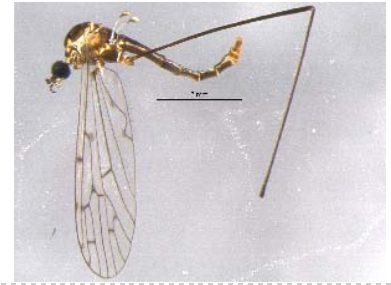




BIOUG05508-A10 [Lateral]  
Drosophilidae



BIOUG05503-C11 [Lateral]  
Empididae



BIOUG05502-D11 [Lateral]  
Symplecta



BIOUG05501-D10 [Lateral]  
Helina rufitibia



BIOUG05549-D09 [Lateral]  
Muscina stabulans



BIOUG05512-E02 [Lateral]  
Phoridae



BIOUG05585-D08 [Lateral]  
Phoridae



BIOUG05521-A04 [Lateral]  
Phoridae



BIOUG05517-A03 [Lateral]  
Phoridae



BIOUG05514-G10 [Lateral]  
Megaselia



BIOUG05501-A03 [Lateral]  
Scathophaga furcata



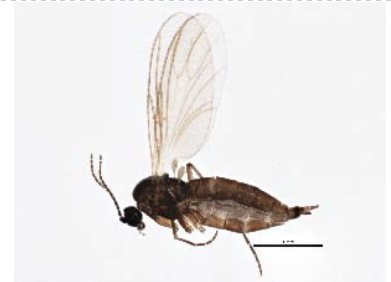
BIOUG05539-G10 [Lateral]  
Coboldia fuscipes



BIOUG05508-B05 [Lateral]  
Sciariidae



BIOUG05503-C12 [Lateral]  
Sciariidae



BIOUG05503-F04 [Lateral]  
Lycoriella castanescens



BIOUG05552-F04 [Lateral]  
*Lycoriella ingenua*



BIOUG05536-G03 [Lateral]  
*Simulium vittatum*



BIOUG05535-C12 [Lateral]  
*Coproica ferruginata*



BIOUG05502-G11 [Dorsal]  
*Toxomerus geminatus*



BIOUG05512-C02 [Dorsal]  
*Walckenaeria tibialis*



BIOUG05505-B11 [Dorsal]  
*Taeniothrips inconsequens*



BIOUG05586-E03 [Dorsal]  
Hemiptera



BIOUG05502-A09 [Dorsal]  
*Kleidocerys*



BIOUG05724-G09 [Dorsal]  
*Lygus plagiatus*



BIOUG05534-D03 [Lateral]  
*Nabis americanoferus*