

# School Malaise Trap Program

## Species Image Library

The images of the species collected in your Malaise trap are shown below. A single representative for each species was selected to be photographed; in some cases, only a damaged specimen was available.

Re-render images :  per page

300 Images Per Page - Pages : 1



BIOUG05509-F10 [Lateral]  
Hymenoptera



BIOUG05607-F08 [Lateral]  
*Andrena dunningi*



BIOUG05542-G12 [Lateral]  
*Aphidius rhopalosiphi*



BIOUG05507-D08 [Lateral]  
*Lasius neoniger*



BIOUG05502-A07 [Lateral]  
*Prenolepis imparis*



BIOUG05576-A01 [Lateral]  
Ichneumonidae



BIOUG05505-B08 [Lateral]  
Tersilochinae



BIOUG05571-G04 [Lateral]  
*Dolichomitus irritator*



BIOUG05512-A02 [Dorsal]  
Anthicidae



BIOUG05602-B04 [Dorsal]  
*Paria fragariae*



BIOUG05502-B05 [Lateral]  
Curculionidae



BIOUG05509-G06 [Lateral]  
*Hylesinus aculeatus*



BIOUG05525-E08 [Dorsal]  
*Orchestes alni*



BIOUG05533-E12 [Dorsal]  
*Cryptophilus obliteratus*



BIOUG05507-H02 [Dorsal]  
Latridiidae



BIOUG05510-A05 [Dorsal]  
*Cyphon laevipennis*



BIOUG05509-G10 [Lateral]  
*Tachyporus chrysmelinus*



BIOUG05545-D07 [Dorsal]  
Throscidae



BIOUG05507-E08 [Dorsal]  
*Trixagus carinicollis*



BIOUG05511-H05 [Lateral]  
Anisopodidae



BIOUG05501-A01 [Lateral]  
*Delia antiqua*



BIOUG05610-E01 [Lateral]  
*Pegomya flavifrons*



BIOUG05501-D07 [Lateral]  
*Pollenia pediculata*



BIOUG05518-B06 [Lateral]  
*Pollenia rudis*



BIOUG05502-H03 [Lateral]  
*Pollenia vagabunda*



BIOUG05503-B03 [Lateral]  
Cecidomyiidae



BIOUG05507-C10 [Lateral]  
Cecidomyiidae



BIOUG05503-B09 [Lateral]  
Cecidomyiidae



BIOUG05505-G10 [Lateral]  
Cecidomyiidae



BIOUG05508-B01 [Lateral]  
Cecidomyiidae



BIOUG05503-H02 [Lateral]  
Chironomidae



BIOUG05505-F01 [Lateral]  
Chironomidae



BIOUG05503-B05 [Lateral]  
Chironomidae



BIOUG05503-A11 [Lateral]  
Chironomidae



BIOUG05531-B08 [Lateral]  
Chironomidae



BIOUG05537-C11 [Lateral]  
*Chironomus atrella*



BIOUG05515-E11 [Lateral]  
*Chironomus riparius*



BIOUG05503-D04 [Lateral]  
*Orthocladius doreus*



BIOUG05503-E12 [Lateral]  
*Smittia*



BIOUG05503-E10 [Lateral]  
Smittia



BIOUG05503-A03 [Lateral]  
Smittia



BIOUG05503-C01 [Lateral]  
Smittia



BIOUG05502-G10 [Lateral]  
Thienemanniella xena



BIOUG05662-B06 [Lateral]  
Anopheles punctipennis



BIOUG05535-A12 [Lateral]  
Chymomyza amoena



BIOUG05544-F04 [Lateral]  
Drosophila affinis



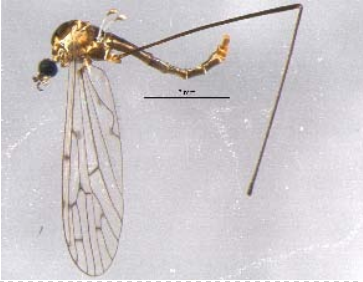
BIOUG05509-A02 [Lateral]  
Drosophila putrida



BIOUG05501-G01 [Lateral]  
Heleomyzidae



BIOUG05541-C12 [Lateral]  
Oecothea nr. fenestralis



BIOUG05502-D11 [Lateral]  
Symplecta



BIOUG05510-H10 [Lateral]  
Lonchaea



BIOUG05501-D10 [Lateral]  
Helina rufitibia



BIOUG05502-C04 [Lateral]  
Mycetophila fungorum



BIOUG05640-D10 [Lateral]  
Mycetophila ocellus



BIOUG05574-C11 [Lateral]  
Phoridae



BIOUG05521-D05 [Lateral]  
Phoridae



BIOUG05522-A07 [Lateral]  
Megaselia



BIOUG05501-A03 [Lateral]  
Scathophaga furcata



BIOUG05508-B05 [Lateral]  
Sciariidae



BIOUG05640-C03 [Lateral]  
Sciariidae



BIOUG05514-D03 [Lateral]  
Sciariidae



BIOUG05503-F04 [Lateral]  
Lycoriella castanescens



BIOUG05640-A08 [Lateral]  
Scatopsciara



BIOUG05689-F03 [Lateral]  
Scatopsciara



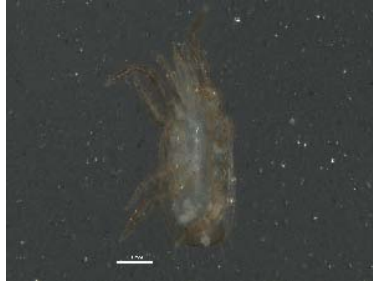
BIOUG05503-F12 [Lateral]  
Scatopsciara



BIOUG05514-A04 [Lateral]  
Scatopsciara atomaria



BIOUG05501-D08 [Lateral]  
Eupeodes americanus



BIOUG05505-C08 [Ventral]  
Digamasellidae



BIOUG05639-A04 [Lateral]  
Platydra subcinerea



BIOUG05602-B01 [Lateral]  
*Recurvaria nanella*



BIOUG05513-A05 [Dorsal]  
*Mythimna unipuncta*



BIOUG05610-A10 [Lateral]  
*Proteoteras aesculana*



BIOUG05660-G11 [Dorsal]  
*Cheiracanthium mildei*



BIOUG05602-A06 [Lateral]  
*Lepidosira*



BIOUG05560-F02 [Dorsal]  
*Phlaeothripidae*



BIOUG05505-B11 [Dorsal]  
*Taeniothrips inconsequens*



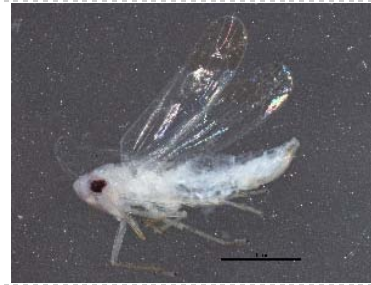
BIOUG05602-F01 [Dorsal]  
*Orius*



BIOUG05602-F03 [Dorsal]  
*Arboridia*



BIOUG05584-B11 [Dorsal]  
*Balclutha*



BIOUG05554-E07 [Lateral]  
*Empoasca*



BIOUG05502-A09 [Dorsal]  
*Kleidocerys*