

School Malaise Trap Program

Species Image Library

The images of the species collected in your Malaise trap are shown below. A single representative for each species was selected to be photographed; in some cases, only a damaged specimen was available.

Re-render images : per page

300 Images Per Page - Pages : 1



BIOUG05509-F12 [Lateral]
Braconidae



BIOUG05507-D08 [Lateral]
Lasius neoniger



BIOUG05502-A07 [Lateral]
Prenolepis imparis



BIOUG05705-D06 [Lateral]
Ichneumonidae



BIOUG05513-A01 [Lateral]
Polistes dominula



BIOUG05705-C08 [Dorsal]
Anthicidae



BIOUG05533-G12 [Lateral]
Anthicidae



BIOUG05512-A02 [Dorsal]
Anthicidae



BIOUG05505-B07 [Dorsal]
Chrysomelidae



BIOUG05528-A10 [Dorsal]
Chaetocnema concinna



BIOUG05602-B04 [Dorsal]
Paria fragariae



BIOUG05534-D07 [Dorsal]
Aeolus



BIOUG05533-E12 [Dorsal]
Cryptophilus obliteratus



BIOUG05699-H01 [Dorsal]
Latridiidae



BIOUG05567-B12 [Lateral]
Latridiidae



BIOUG05507-H02 [Dorsal]
Latridiidae



BIOUG05705-C11 [Dorsal]
Corticaria serrata



BIOUG05533-G01 [Dorsal]
Scirtidae



BIOUG05509-G11 [Dorsal]
Staphylinidae



BIOUG05532-G09 [Dorsal]
Trixagus



BIOUG05604-E05 [Lateral]
Cerodontha dorsalis



BIOUG05501-A01 [Lateral]
Delia antiqua



BIOUG05501-A02 [Lateral]
Hylemya



BIOUG05501-F08 [Lateral]
Cynomya cadaverina



BIOUG05503-B09 [Lateral]
Cecidomyiidae



BIOUG05508-C04 [Lateral]
Cecidomyiidae



BIOUG05703-F05 [Lateral]
Cecidomyiidae



BIOUG05505-G10 [Lateral]
Cecidomyiidae



BIOUG05507-C10 [Lateral]
Cecidomyiidae



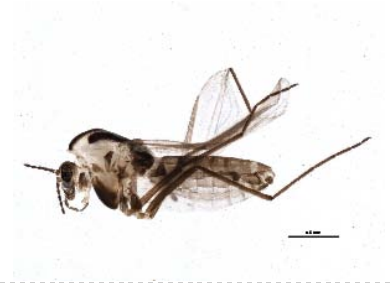
BIOUG05522-C03 [Lateral]
Chironomidae



BIOUG05558-D08 [Lateral]
Chironomidae



BIOUG05590-H11 [Lateral]
Chironomidae



BIOUG05514-B08 [Lateral]
Chironomidae



BIOUG05705-B05 [Lateral]
Chironomidae



BIOUG05514-H06 [Lateral]
Chironomidae



BIOUG05703-F07 [Lateral]
Chironomidae



BIOUG05704-D06 [Lateral]
Chironomidae



BIOUG05508-D08 [Lateral]
Chironomidae



BIOUG05538-A03 [Lateral]
Chironomidae



BIOUG05503-B05 [Lateral]
Chironomidae



BIOUG05508-C09 [Lateral]
Chironomidae



BIOUG05505-A07 [Lateral]
Chironomidae



BIOUG05504-B10 [Lateral]
Chironomidae



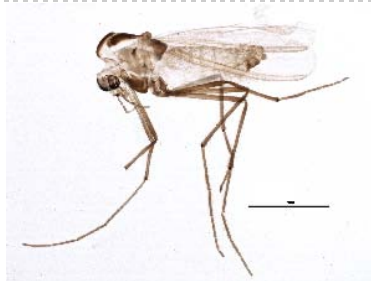
BIOUG05502-A10 [Lateral]
Chironomus cf. decorus



BIOUG05522-B11 [Lateral]
Chironomus pseudothummi



BIOUG05519-H08 [Lateral]
Gymnometriocnemus brumalis



BIOUG05522-C06 [Lateral]
Paratanytarsus laccophilus



BIOUG05581-F11 [Lateral]
Psectrocladius barbimanus



BIOUG05503-C01 [Lateral]
Smittia



BIOUG05503-A03 [Lateral]
Smittia



BIOUG05503-E10 [Lateral]
Smittia



BIOUG05570-H09 [Lateral]
Smittia edwardsi



BIOUG05503-C11 [Lateral]
Empididae



BIOUG05510-H10 [Lateral]
Lonchaea



BIOUG05501-D10 [Lateral]
Helina rufitibia



BIOUG05552-B12 [Lateral]
Mycetophilidae



BIOUG05703-F06 [Lateral]
Mycetophilidae



BIOUG05504-A05 [Lateral]
Mycetophila



BIOUG05548-E10 [Lateral]
Phoridae



BIOUG05521-A04 [Lateral]
Phoridae



BIOUG05608-G10 [Lateral]
Phoridae



BIOUG05501-A03 [Lateral]
Scathophaga furcata



BIOUG05501-A07 [Lateral]
Scathophaga stercoraria



BIOUG05704-H10 [Lateral]
Sciaridae



BIOUG05522-H01 [Lateral]
Sciaridae



BIOUG05532-F06 [Lateral]
Sciaridae



BIOUG05503-C12 [Lateral]
Sciaridae



BIOUG05525-G01 [Lateral]
Sciaridae



BIOUG05519-D06 [Lateral]
Sciaridae



BIOUG05503-A10 [Lateral]
Sciariidae



BIOUG05503-F04 [Lateral]
Lycoriella castanescens



BIOUG05503-F12 [Lateral]
Scatopsciara



BIOUG05689-F03 [Lateral]
Scatopsciara



BIOUG05705-A12 [Lateral]
Sphaeroceridae



BIOUG05501-D08 [Lateral]
Eupeodes americanus



BIOUG05512-D10 [Dorsal]
Elachista illectella



BIOUG05515-B06 [Dorsal]
Plutella xylostella



BIOUG05512-D01 [Dorsal]
Erythroneura rubrella



BIOUG05502-A09 [Dorsal]
Kleidocerys



BIOUG05507-H03 [Lateral]
Psyllidae