

School Malaise Trap Program

Species Image Library

The images of the species collected in your Malaise trap are shown below. A single representative for each species was selected to be photographed; in some cases, only a damaged specimen was available.

Re-render images : per page

300 Images Per Page - Pages : 1



BIOUG05509-F10 [Lateral]
Hymenoptera



BIOUG05581-E09 [Lateral]
Hymenoptera



BIOUG05509-F08 [Lateral]
Hymenoptera



BIOUG05501-H04 [Lateral]
Ceratina



BIOUG05509-F06 [Lateral]
Braconidae



BIOUG05509-F12 [Lateral]
Braconidae



BIOUG05509-F09 [Lateral]
Diapriidae



BIOUG05509-E07 [Lateral]
Diapriidae



BIOUG05507-D11 [Lateral]
Diapriidae



BIOUG05509-F05 [Lateral]
Figitidae



BIOUG05502-B08 [Lateral]
Formica glacialis



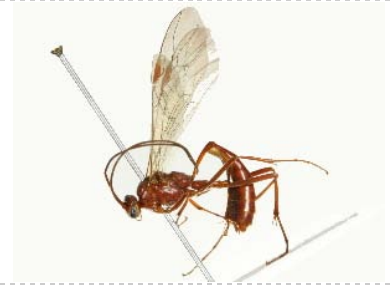
BIOUG05661-F06 [Lateral]
Lasioglossum



BIOUG05502-B10 [Lateral]
Lasioglossum weemsi



BIOUG05502-B11 [Lateral]
Ichneumonidae



BIOUG05501-E09 [Lateral]
Ophion



BIOUG05509-E08 [Dorsal]
Megaspilidae



BIOUG05509-F02 [Dorsal]
Megaspilidae



BIOUG05501-D04 [Dorsal]
Dolerus



BIOUG05509-F11 [Lateral]
Xyelidae



BIOUG05501-G08 [Dorsal]
Altica chalybea



BIOUG05501-G06 [Dorsal]
Ophraella



BIOUG05501-G04 [Dorsal]
Enoclerus nigripes



BIOUG05509-H02 [Dorsal]
Atomaria



BIOUG05509-G09 [Dorsal]
Atomaria



BIOUG05509-G06 [Lateral]
Hylesinus aculeatus



BIOUG05510-A03 [Lateral]
Xyleborinus



BIOUG05501-G02 [Dorsal]
Ampedus protervus



BIOUG05509-H09 [Dorsal]
Latridiidae



BIOUG05509-H08 [Dorsal]
Cortinicara gibbosa



BIOUG05510-A05 [Dorsal]
Cyphon laevipennis



BIOUG05509-G11 [Dorsal]
Staphylinidae



BIOUG05509-G08 [Lateral]
Staphylinidae



BIOUG05509-H04 [Dorsal]
Carpelimus



BIOUG05509-G10 [Lateral]
Tachyporus chrysomelinus



BIOUG05509-G12 [Dorsal]
Tachyporus nitidulus



BIOUG05509-H05 [Dorsal]
Throscidae



BIOUG05501-A01 [Lateral]
Delia antiqua



BIOUG05501-F08 [Lateral]
Cynomya cadaverina



BIOUG05501-F09 [Lateral]
Phormia regina



BIOUG05503-B09 [Lateral]
Cecidomyiidae



BIOUG05508-C04 [Lateral]
Cecidomyiidae



BIOUG05503-B03 [Lateral]
Cecidomyiidae



BIOUG05508-C08 [Lateral]
Cecidomyiidae



BIOUG05508-G03 [Lateral]
Cecidomyiidae



BIOUG05509-C02 [Lateral]
Cecidomyiidae



BIOUG05508-B01 [Lateral]
Cecidomyiidae



BIOUG05508-C06 [Lateral]
Cecidomyiidae



BIOUG05507-C10 [Lateral]
Cecidomyiidae



BIOUG05508-H03 [Lateral]
Cecidomyiidae



BIOUG05508-D12 [Lateral]
Cecidomyiidae



BIOUG05509-E05 [Lateral]
Cecidomyiidae



BIOUG05503-H02 [Lateral]
Chironomidae



BIOUG05508-C09 [Lateral]
Chironomidae



BIOUG05508-F06 [Lateral]
Chironomidae



BIOUG05508-D08 [Lateral]
Chironomidae



BIOUG05503-A08 [Lateral]
Bryophaenocladius



BIOUG05503-D04 [Lateral]
Orthocladius dorenius



BIOUG05503-E12 [Lateral]
Smittia



BIOUG05503-E10 [Lateral]
Smittia



BIOUG05508-A10 [Lateral]
Drosophilidae



BIOUG05509-A02 [Lateral]
Drosophila putrida



BIOUG05501-G01 [Lateral]
Heleomyzidae



BIOUG05501-D10 [Lateral]
Helina rufitibia



BIOUG05508-G04 [Lateral]
Mycetophilidae



BIOUG05504-A05 [Lateral]
Mycetophila



BIOUG05508-G12 [Lateral]
Mycetophila



BIOUG05502-C04 [Lateral]
Mycetophila fungorum



BIOUG05508-B03 [Lateral]
Psychodidae



BIOUG05501-A03 [Lateral]
Scathophaga furcata



BIOUG05508-B05 [Lateral]
Sciariidae



BIOUG05689-F03 [Lateral]
Scatopsiara



BIOUG05509-A03 [Lateral]
Spelobia ochripes



BIOUG05501-D08 [Lateral]
Eupeodes americanus



BIOUG05508-C07 [Lateral]
Trichocera



BIOUG05501-H05 [Lateral]
Hemerobius



BIOUG05508-A07 [Dorsal]
Ascidae



BIOUG05502-C10 [Lateral]
Dichomeris ligulella



BIOUG05510-C06 [Lateral]
Sinoe chambersi



BIOUG05501-H06 [Dorsal]
Acleris flavivittana



BIOUG05579-F01 [Dorsal]
Pseudexentera spoliata



BIOUG05510-B12 [Dorsal]
Pocadicnemis americana



BIOUG05510-C01 [Dorsal]
Piratulla minuta



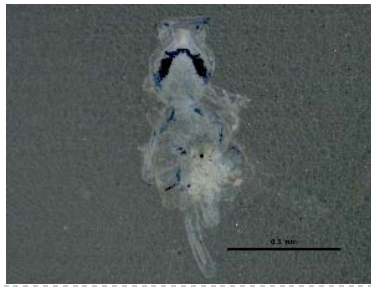
BIOUG05510-C02 [Dorsal]
Philodromus cespitum



BIOUG05510-B11 [Dorsal]
Philodromus marxi



BIOUG05510-B10 [Dorsal]
Neottiura bimaculata



BIOUG05510-C09 [Dorsal]
Entomobrya multifasciata



BIOUG05505-B11 [Dorsal]
Taeniothrips inconsequens



BIOUG05510-B01 [Dorsal]
Arboridia



BIOUG05510-B04 [Dorsal]
Dikraneura



BIOUG05652-B05 [Dorsal]
Empoasca



BIOUG05510-A11 [Dorsal]
Erythroneura



BIOUG05510-B02 [Dorsal]
Erythroneura tricincta



BIOUG05652-D09 [Dorsal]
Erythroneura vulnerata



BIOUG05724-G09 [Dorsal]
Lygus plagiatus



BIOUG05501-H02 [Dorsal]
Nabis roseipennis



BIOUG05501-H01 [Dorsal]
Nabis rufusculus