

# School Malaise Trap Program

## Species Image Library

The images of the species collected in your Malaise trap are shown below. A single representative for each species was selected to be photographed; in some cases, only a damaged specimen was available.

Re-render images :  per page

300 Images Per Page - Pages : 1



BIOUG05612-G01 [Lateral]  
Hymenoptera



BIOUG05551-E03 [Lateral]  
Hymenoptera



BIOUG05612-G10 [Lateral]  
Bethyliidae



BIOUG05542-G12 [Lateral]  
*Aphidius rhopalosiphii*



BIOUG05612-G12 [Lateral]  
*Diaeretiella rapae*



BIOUG05613-A11 [Lateral]  
*Lysiphlebus testaceipes*



BIOUG05612-E06 [Lateral]  
Cynipidae



BIOUG05612-F10 [Lateral]  
*Dryocosmus quercuspalustris*



BIOUG05502-B08 [Lateral]  
*Formica glacialis*



BIOUG05507-D08 [Lateral]

*Lasius neoniger*



BIOUG05511-F03 [Lateral]

*Myrmica*



BIOUG05502-A07 [Lateral]

*Prenolepis imparis*



BIOUG05571-G04 [Lateral]

*Dolichomitus irritator*



BIOUG05612-E04 [Lateral]

Platygasteridae



BIOUG05571-G06 [Dorsal]

*Cryptophorus verrucosus*



BIOUG05533-H02 [Dorsal]

*Altica corni*



BIOUG05551-B09 [Dorsal]

*Phyllotreta cruciferae*



BIOUG05540-B01 [Dorsal]

Cleridae



BIOUG05516-C10 [Dorsal]

Coccinellidae



BIOUG05525-E08 [Dorsal]

*Orchestes alni*



BIOUG05612-C12 [Dorsal]

*Xyleborus dispar*



BIOUG05571-G08 [Dorsal]

*Ampedus nigricollis*



BIOUG05509-G12 [Dorsal]

*Tachyporus nitidulus*



BIOUG05549-G03 [Lateral]

Anthomyiidae





BIOUG05501-A01 [Lateral]  
*Delia antiqua*



BIOUG05501-A02 [Lateral]  
*Hylemya*



BIOUG05530-H07 [Lateral]  
*Pegomya solennis*



BIOUG05608-E09 [Dorsal]  
*Aulacigaster neoleucopeza*



BIOUG05501-F08 [Lateral]  
*Cynomya cadaverina*



BIOUG05502-H03 [Lateral]  
*Pollenia vagabunda*



BIOUG05503-B09 [Lateral]  
Cecidomyiidae



BIOUG05512-H02 [Lateral]  
Cecidomyiidae



BIOUG05503-B03 [Lateral]  
Cecidomyiidae



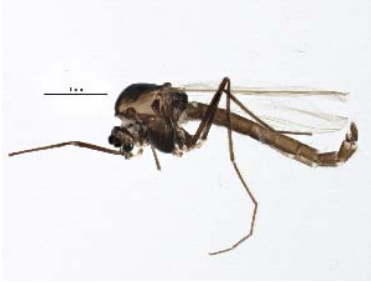
BIOUG05613-H07 [Lateral]  
Cecidomyiidae



BIOUG05576-H06 [Lateral]  
Chironomidae



BIOUG05503-H02 [Lateral]  
Chironomidae



BIOUG05506-C04 [Lateral]  
Chironomidae



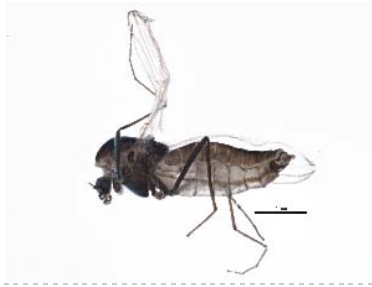
BIOUG05505-A07 [Lateral]  
Chironomidae



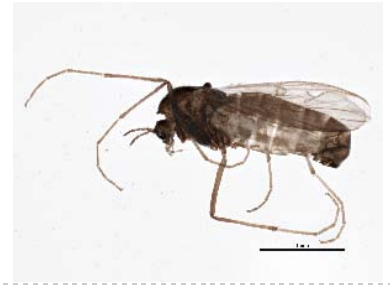
BIOUG05519-A08 [Lateral]  
Chironomidae



BIOUG05508-D08 [Lateral]  
Chironomidae



BIOUG05544-H07 [Lateral]  
Chironomidae



BIOUG05503-A08 [Lateral]  
Bryophaenocladus



BIOUG05515-A04 [Lateral]  
Chironomus melanescens



BIOUG05503-D04 [Lateral]  
Orthocladus dorenus



BIOUG05514-D06 [Lateral]  
Paraphaenocladus impensus



BIOUG05516-G04 [Lateral]  
Psectrocladius cf. limbatellus



BIOUG05503-E10 [Lateral]  
Smittia



BIOUG05503-E12 [Lateral]  
Smittia



BIOUG05502-G10 [Lateral]  
Thienemanniella xena



BIOUG05517-G09 [Lateral]  
Dolichopodidae



BIOUG05502-D11 [Lateral]  
Symplecta



BIOUG05501-D10 [Lateral]  
Helina rufitibia



BIOUG05547-B07 [Lateral]  
Phoridae



BIOUG05521-A04 [Lateral]  
Phoridae



BIOUG05514-G10 [Lateral]  
Megaselia



BIOUG05501-A03 [Lateral]  
Scathophaga furcata



BIOUG05514-D03 [Lateral]  
Sciariidae



BIOUG05532-F06 [Lateral]  
Sciariidae



BIOUG05508-B05 [Lateral]  
Sciariidae



BIOUG05506-G05 [Lateral]  
Sciariidae



BIOUG05580-D01 [Lateral]  
Sciariidae



BIOUG05503-C12 [Lateral]  
Sciariidae



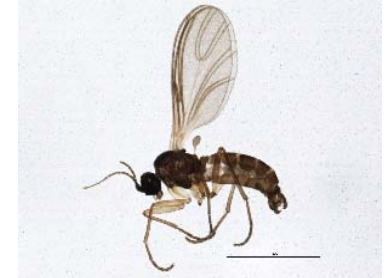
BIOUG05525-G01 [Lateral]  
Sciariidae



BIOUG05591-F05 [Lateral]  
Sciariidae



BIOUG05503-F04 [Lateral]  
Lycoriella castanescens



BIOUG05503-F12 [Lateral]  
Scatopsciara



BIOUG05614-B01 [Lateral]  
Scatopsciara



BIOUG05507-C12 [Lateral]  
Scatopsciara



BIOUG05689-F03 [Lateral]  
Scatopsciara

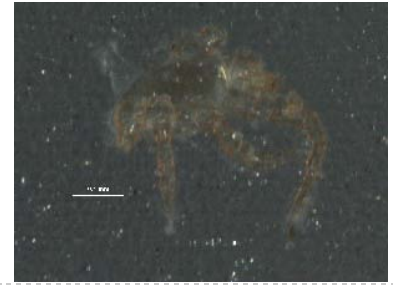




BIOUG05515-G09 [Lateral]  
*Themira nigricornis*



BIOUG05533-D05 [Dorsal]  
Blattisociidae



BIOUG05525-F10 [Lateral]  
Melicharidae



BIOUG05516-D12 [Dorsal]  
Sarcoptiformes



BIOUG05513-A05 [Dorsal]  
*Mythimna unipuncta*



BIOUG05612-H11 [Dorsal]  
*Thyreosthenius parasiticus*



BIOUG05510-C01 [Dorsal]  
*Piratulla minuta*



BIOUG05516-D01 [Lateral]  
Entomobrya



BIOUG05581-E05 [Lateral]  
*Orchesella cincta*



BIOUG05606-B05 [Dorsal]  
Thripidae



BIOUG05614-E12 [Dorsal]  
*Capitophorus elaeagni*



BIOUG05507-H03 [Lateral]  
Psyllidae



BIOUG05565-F01 [Dorsal]  
*Boisea rubrolineata*

