

School Malaise Trap Program

Species Image Library

The images of the species collected in your Malaise trap are shown below. A single representative for each species was selected to be photographed; in some cases, only a damaged specimen was available.

Re-render images : per page

300 Images Per Page - Pages : 1



BIOUG05502-B08 [Lateral]
Formica glacialis



BIOUG05511-F03 [Lateral]
Myrmica



BIOUG05529-H01 [Lateral]
Myrmica americana



BIOUG05501-A01 [Lateral]
Delia antiqua



BIOUG05501-A02 [Lateral]
Hylemya



BIOUG05502-H06 [Lateral]
Hylemya



BIOUG05530-H07 [Lateral]
Pegomya solennis



BIOUG05518-B12 [Lateral]
Pollenia angustigena



BIOUG05501-D07 [Lateral]
Pollenia pediculata



BIOUG05502-H03 [Lateral]

Pollenia vagabunda



BIOUG05514-H06 [Lateral]

Chironomidae



BIOUG05544-H07 [Lateral]

Chironomidae



BIOUG05510-G12 [Lateral]

Chironomidae



BIOUG05703-C03 [Lateral]

Chironomidae



BIOUG05618-D07 [Lateral]

Chironomidae



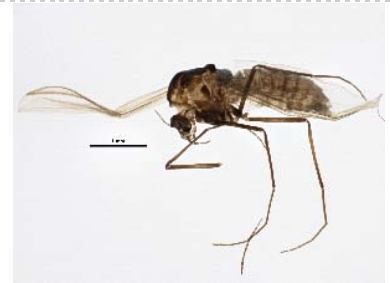
BIOUG05587-A01 [Lateral]

Chironomidae



BIOUG05538-A03 [Lateral]

Chironomidae



BIOUG05506-G10 [Lateral]

Chironomidae



BIOUG05623-G04 [Lateral]

Chironomidae



BIOUG05502-A10 [Lateral]

Chironomus cf. decorus



BIOUG05729-E09 [Lateral]

Chironomus entis



BIOUG05520-A08 [Lateral]

Micropsectra



BIOUG05503-D04 [Lateral]

Orthocladius dorenius



BIOUG05503-A03 [Lateral]

Smittia



BIOUG05501-D10 [Lateral]

Helina rufitibia



BIOUG05540-F09 [Lateral]

Hydrotaea



BIOUG05691-D09 [Lateral]

Sarcophaga carnaria



BIOUG05501-A03 [Lateral]

Scathophaga furcata



BIOUG05501-A07 [Lateral]

Scathophaga stercoraria



BIOUG05710-H03 [Lateral]

Gonia ornata



BIOUG05513-A05 [Dorsal]

Mythimna unipuncta