

School Malaise Trap Program

Species Image Library

The images of the species collected in your Malaise trap are shown below. A single representative for each species was selected to be photographed; in some cases, only a damaged specimen was available.

Re-render images : per page

300 Images Per Page - Pages : 1



BIOUG05540-A12 [Lateral]
Andrena nasonii



BIOUG05588-F07 [Lateral]
Cynipidae



BIOUG05588-F01 [Lateral]
Callirhytis



BIOUG05502-A07 [Lateral]
Prenolepis imparis



BIOUG05513-A02 [Lateral]
Ichneumonidae



BIOUG05512-C07 [Lateral]
Megaspilidae



BIOUG05679-A01 [Lateral]
Platygasteridae



BIOUG05588-F09 [Dorsal]
Platygasteridae



BIOUG05579-E09 [Lateral]
Pompilidae



BIOUG05627-A01 [Lateral]
Telenomus podisi



BIOUG05520-C07 [Lateral]
Dibolia borealis



BIOUG05511-H05 [Lateral]
Anisopodidae



BIOUG05549-G03 [Lateral]
Anthomyiidae



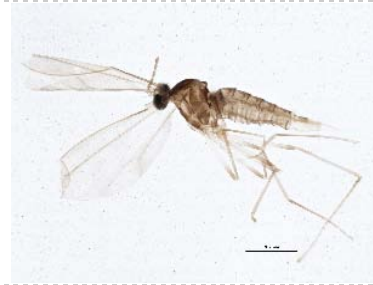
BIOUG05501-A01 [Lateral]
Delia antiqua



BIOUG05501-A02 [Lateral]
Hylemya



BIOUG05501-F08 [Lateral]
Cynomya cadaverina



BIOUG05587-H11 [Lateral]
Cecidomyiidae



BIOUG05588-C09 [Lateral]
Cecidomyiidae



BIOUG05503-B09 [Lateral]
Cecidomyiidae



BIOUG05508-C04 [Lateral]
Cecidomyiidae



BIOUG05586-G07 [Lateral]
Cecidomyiidae



BIOUG05587-F04 [Lateral]
Cecidomyiidae



BIOUG05588-B06 [Lateral]
Cecidomyiidae



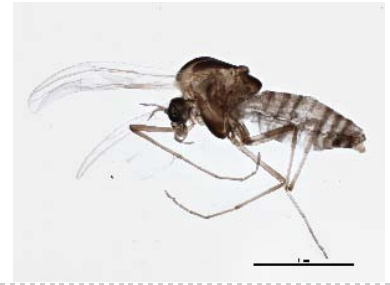
BIOUG05586-H02 [Lateral]
Cecidomyiidae



BIOUG05542-B01 [Lateral]
Cecidomyiidae



BIOUG05508-D08 [Lateral]
Chironomidae



BIOUG05522-F12 [Lateral]
Chironomidae



BIOUG05544-H07 [Lateral]
Chironomidae



BIOUG05587-E03 [Lateral]
Chironomidae



BIOUG05522-A11 [Lateral]
Chironomidae



BIOUG05522-A02 [Lateral]
Chironomidae



BIOUG05503-A11 [Lateral]
Chironomidae



BIOUG05519-H10 [Lateral]
Chironomidae



BIOUG05503-B04 [Lateral]
Chironomidae



BIOUG05503-B06 [Lateral]
Chironomidae



BIOUG05503-H02 [Lateral]
Chironomidae



BIOUG05586-G02 [Lateral]
Chironomidae



BIOUG05503-B05 [Lateral]
Chironomidae



BIOUG05587-A01 [Lateral]
Chironomidae



BIOUG05514-B08 [Lateral]
Chironomidae



BIOUG05503-A08 [Lateral]
Bryophaeocladius



BIOUG05503-E12 [Lateral]
Smittia



BIOUG05503-A03 [Lateral]
Smittia



BIOUG05501-D10 [Lateral]
Helina rufitibia



BIOUG05512-E02 [Lateral]
Phoridae



BIOUG05508-B03 [Lateral]
Psychodidae



BIOUG05501-A03 [Lateral]
Scathophaga furcata



BIOUG05587-E04 [Lateral]
Sciariidae



BIOUG05689-F03 [Lateral]
Scatopsiara



BIOUG05513-F09 [Lateral]
Agonopterix pulvipennella



BIOUG05512-D10 [Dorsal]
Elachista illectella



BIOUG05549-H04 [Dorsal]
Telphusa longifasciella



BIOUG05579-E11 [Dorsal]
Xenolechia velatella



BIOUG05618-B12 [Lateral]
Phyllonorycter morrisella



BIOUG05579-E12 [Lateral]
Acleris nivisellana



BIOUG05618-B09 [Lateral]
Epinotia sotipena



BIOUG05579-F01 [Dorsal]
Pseudexentera spoliata



BIOUG05516-F01 [Lateral]
Anyphaena pectorosa



BIOUG05579-F03 [Dorsal]
Hibana gracilis



BIOUG05588-G09 [Dorsal]
Pardosa saxatilis



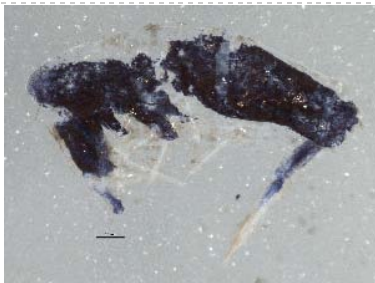
BIOUG05510-C01 [Dorsal]
Piratulla minuta



BIOUG05588-H02 [Dorsal]
Philodromus californicus



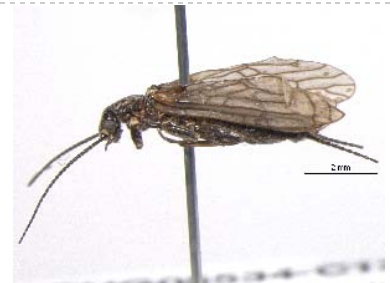
BIOUG05618-B03 [Dorsal]
Enoplognatha ovata



BIOUG05512-D09 [Lateral]
Lepidocyrtus paradoxus



BIOUG05595-D07 [Lateral]
Lepidosira



BIOUG05534-C12 [Lateral]
Allocapnia vivipara



BIOUG05579-F07 [Dorsal]
Stenodema trispinosum

