

School Malaise Trap Program

Species Image Library

The images of the species collected in your Malaise trap are shown below. A single representative for each species was selected to be photographed; in some cases, only a damaged specimen was available.

Re-render images : per page

300 Images Per Page - Pages : 1



BIOUG05511-G01 [Lateral]
Camponotus pennsylvanicus



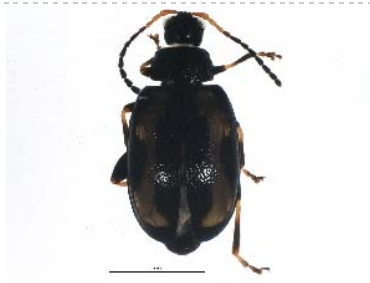
BIOUG05507-D08 [Lateral]
Lasius neoniger



BIOUG05502-A07 [Lateral]
Prenolepis imparis



BIOUG05572-E08 [Lateral]
Platygasteridae



BIOUG05520-C10 [Dorsal]
Phyllotreta striolata



BIOUG05503-G08 [Lateral]
Agromyzidae



BIOUG05501-A01 [Lateral]
Delia antiqua



BIOUG05518-B12 [Lateral]
Pollenia angustigena



BIOUG05501-D07 [Lateral]
Pollenia pediculata



BIOUG05503-B09 [Lateral]
Cecidomyiidae



BIOUG05503-B03 [Lateral]
Cecidomyiidae



BIOUG05572-G07 [Lateral]
Chironomidae



BIOUG05503-A11 [Lateral]
Chironomidae



BIOUG05522-C09 [Lateral]
Chironomidae



BIOUG05503-B05 [Lateral]
Chironomidae



BIOUG05503-A06 [Lateral]
Chironomidae



BIOUG05547-C07 [Lateral]
Chironomidae



BIOUG05506-C04 [Lateral]
Chironomidae



BIOUG05515-C08 [Lateral]
Chironomidae



BIOUG05573-F10 [Lateral]
Chironomidae



BIOUG05574-H04 [Lateral]
Chironomidae



BIOUG05531-H01 [Lateral]
Chironomidae



BIOUG05519-A08 [Lateral]
Chironomidae



BIOUG05517-B10 [Lateral]
Chironomidae



BIOUG05546-A08 [Lateral]
Chironomidae



BIOUG05503-B06 [Lateral]
Chironomidae



BIOUG05503-A08 [Lateral]
Bryophaenocladus



BIOUG05573-H02 [Lateral]
Cricotopus



BIOUG05573-E05 [Lateral]
Eukiefferiella



BIOUG05572-G05 [Lateral]
Heterotrissocladus



BIOUG05520-A08 [Lateral]
Micropsectra



BIOUG05503-D04 [Lateral]
Orthocladus dorensis



BIOUG05574-F06 [Lateral]
Orthocladus rivicola



BIOUG05505-F06 [Lateral]
Orthocladus rivulorum



BIOUG05572-F06 [Lateral]
Paratanytarsus



BIOUG05503-E12 [Lateral]
Smittia



BIOUG05503-A03 [Lateral]
Smittia



BIOUG05503-E10 [Lateral]
Smittia



BIOUG05503-C01 [Lateral]
Smittia



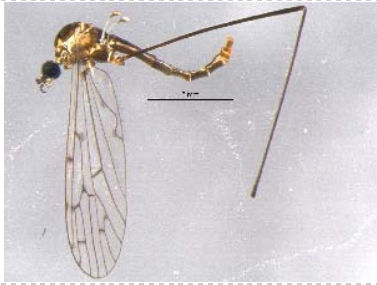
BIOUG05570-H09 [Lateral]
Smittia edwardsi



BIOUG05574-E10 [Lateral]
Tvetenia



BIOUG05528-E10 [Lateral]
Tvetenia paucunca



BIOUG05502-D11 [Lateral]
Symplecta



BIOUG05510-H10 [Lateral]
Lonchaea



BIOUG05501-D10 [Lateral]
Helina rufitibia



BIOUG05504-A05 [Lateral]
Mycetophila



BIOUG05574-C11 [Lateral]
Phoridae



BIOUG05522-C01 [Lateral]
Megaselia



BIOUG05503-C12 [Lateral]
Sciaridae



BIOUG05506-G05 [Lateral]
Sciaridae



BIOUG05503-F04 [Lateral]
Lycoriella castanescens



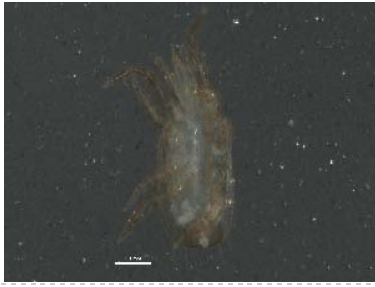
BIOUG05689-F03 [Lateral]
Scatopsiara



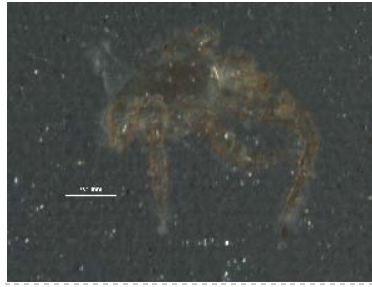
BIOUG05563-H07 [Lateral]
Prosimulium arum



BIOUG05501-D08 [Lateral]
Eupodes americanus



BIOUG05505-C08 [Ventral]
Digamasellidae



BIOUG05525-F10 [Lateral]
Melicharidae



BIOUG05571-D09 [Lateral]
Prostoia similis



BIOUG05505-B11 [Dorsal]
Taeniothrips inconsequens