

School Malaise Trap Program

Species Image Library

The images of the species collected in your Malaise trap are shown below. A single representative for each species was selected to be photographed; in some cases, only a damaged specimen was available.

Re-render images : per page

300 Images Per Page - Pages : 1



BIOUG05501-H04 [Lateral]
Ceratina



BIOUG05642-E10 [Lateral]
Aphidius rhopalosiphi



BIOUG05507-D11 [Lateral]
Diapriidae



BIOUG05507-D08 [Lateral]
Lasius neoniger



BIOUG05529-H01 [Lateral]
Myrmica americana



BIOUG05505-B08 [Lateral]
Tersilochinae



BIOUG05513-A01 [Lateral]
Polistes dominula



BIOUG05512-A02 [Dorsal]
Anthicidae



BIOUG05528-A10 [Dorsal]
Chaetocnema concinna



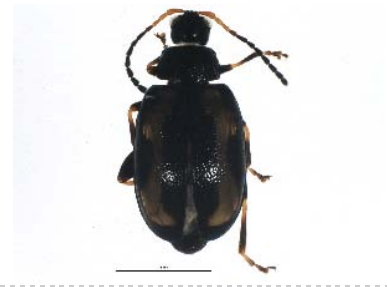
BIOUG05658-G06 [Lateral]

Paria fragariae



BIOUG05551-B09 [Dorsal]

Phyllotreta cruciferae



BIOUG05520-C10 [Dorsal]

Phyllotreta striolata



BIOUG05523-B11 [Dorsal]

Harmonia axyridis



BIOUG05502-B05 [Lateral]

Curculionidae



BIOUG05525-E08 [Dorsal]

Orchestesalni



BIOUG05533-G01 [Dorsal]

Scirtidae



BIOUG05510-A05 [Dorsal]

Cyphon laevipennis



BIOUG05509-G11 [Dorsal]

Staphylinidae



BIOUG05551-C02 [Lateral]

Amischa analis



BIOUG05599-E08 [Lateral]

Gabrius subnigrifulus



BIOUG05658-F12 [Lateral]

Philonthus concinnus



BIOUG05501-A01 [Lateral]

Delia antiqua



BIOUG05501-F08 [Lateral]

Cynomya cadaverina



BIOUG05501-F09 [Lateral]

Phormia regina



BIOUG05518-B12 [Lateral]
Pollenia angustigena



BIOUG05501-D07 [Lateral]
Pollenia pediculata



BIOUG05518-B06 [Lateral]
Pollenia rudis



BIOUG05502-H03 [Lateral]
Pollenia vagabunda



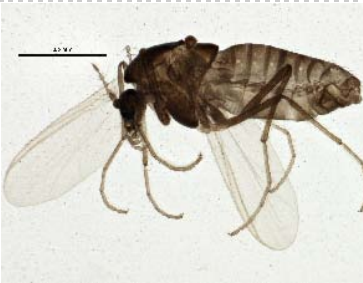
BIOUG05503-B03 [Lateral]
Cecidomyiidae



BIOUG05503-B09 [Lateral]
Cecidomyiidae



BIOUG05507-C10 [Lateral]
Cecidomyiidae



BIOUG05506-E04 [Lateral]
Chironomidae



BIOUG05503-B05 [Lateral]
Chironomidae



BIOUG05522-A02 [Lateral]
Chironomidae



BIOUG05503-A11 [Lateral]
Chironomidae



BIOUG05683-B01 [Lateral]
Chironomidae



BIOUG05502-A10 [Lateral]
Chironomus cf. decorus



BIOUG05519-H08 [Lateral]
Gymnometriocnemus brumalis



BIOUG05616-D06 [Lateral]
Micropsectra



BIOUG05522-F08 [Lateral]
Micropsectra polita



BIOUG05503-E10 [Lateral]
Smittia



BIOUG05503-E12 [Lateral]
Smittia



BIOUG05503-C01 [Lateral]
Smittia



BIOUG05517-B12 [Lateral]
Smittia



BIOUG05570-H09 [Lateral]
Smittia edwardsi



BIOUG05503-C11 [Lateral]
Empididae



BIOUG05501-D10 [Lateral]
Helina rufitibia



BIOUG05530-B01 [Lateral]
Muscina stabulans



BIOUG05521-A04 [Lateral]
Phoridae



BIOUG05683-C08 [Lateral]
Phoridae



BIOUG05512-E02 [Lateral]
Phoridae



BIOUG05514-G10 [Lateral]
Megaselia



BIOUG05501-A03 [Lateral]
Scathophaga furcata



BIOUG05503-C12 [Lateral]
Sciaridae



BIOUG05635-B03 [Lateral]
Sciaridae



BIOUG05519-D06 [Lateral]
Sciaridae



BIOUG05503-F04 [Lateral]
Lycoriella castanescens



BIOUG05552-F04 [Lateral]
Lycoriella ingenua



BIOUG05537-D08 [Lateral]
Atrichomelina pubera



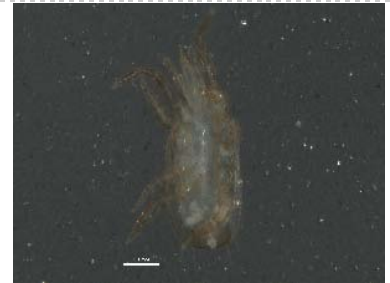
BIOUG05515-G09 [Lateral]
Themira nigricornis



BIOUG05501-D08 [Lateral]
Eupeodes americanus



BIOUG05533-D05 [Dorsal]
Blattisociidae



BIOUG05505-C08 [Ventral]
Digamasellidae



BIOUG05630-E02 [Dorsal]
Parasitidae



BIOUG05528-B12 [Lateral]
Parectopa albicostella



BIOUG05510-C02 [Dorsal]
Philodromus cespitum



BIOUG05516-D01 [Lateral]
Entomobrya



BIOUG05505-B11 [Dorsal]
Taeniothrips inconsequens



BIOUG05554-F03 [Lateral]
Empoasca



BIOUG05521-F10 [Dorsal]

Empoasca



BIOUG05536-E01 [Dorsal]

Erythroneura



BIOUG05658-D03 [Dorsal]

Erythroneura



BIOUG05562-G09 [Dorsal]

Erythroneura



BIOUG05652-D09 [Dorsal]

Erythroneura vulnerata



BIOUG05658-D05 [Dorsal]

Erythroneura vulnerata



BIOUG05539-F03 [Dorsal]

Idiocerus



BIOUG05502-A08 [Lateral]

Idiocerus alternatus



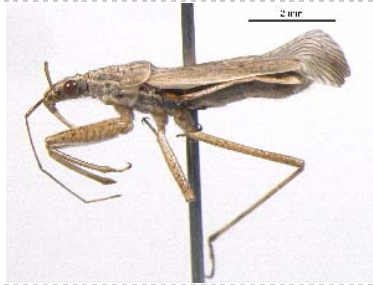
BIOUG05502-A09 [Dorsal]

Kleidocerys



BIOUG05724-G09 [Dorsal]

Lygus plagiatus



BIOUG05534-D03 [Lateral]

Nabis americanoferus



BIOUG05501-H01 [Dorsal]

Nabis rufusculus



BIOUG05516-A12 [Lateral]

Psyllidae

