

School Malaise Trap Program

Species Image Library

The images of the species collected in your Malaise trap are shown below. A single representative for each species was selected to be photographed; in some cases, only a damaged specimen was available.

Re-render images : per page

300 Images Per Page - Pages : 1



BIOUG05509-F06 [Lateral]
Braconidae



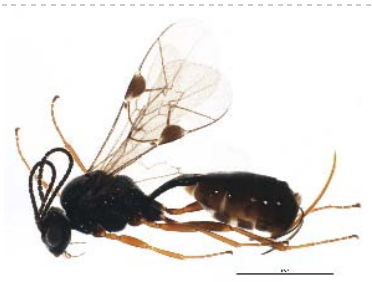
BIOUG05665-A05 [Lateral]
Aphidius colemani



BIOUG05502-F05 [Lateral]
Lasioglossum



BIOUG05653-F05 [Lateral]
Ichneumonidae



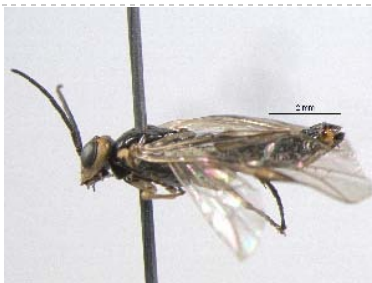
BIOUG05505-B08 [Lateral]
Tersilochinae



BIOUG05534-B11 [Lateral]
Ichneumon discoensis



BIOUG05637-C06 [Lateral]
Amauronematus



BIOUG05637-C08 [Lateral]
Amauronematus



BIOUG05637-C07 [Lateral]
Polistes fuscatus



BIOUG05602-B04 [Dorsal]

Paria fragariae



BIOUG05501-G04 [Dorsal]

Enoclerus nigripes



BIOUG05637-D01 [Dorsal]

Pissodes strobi



BIOUG05637-C10 [Dorsal]

Ellychnia corrusca



BIOUG05551-B07 [Dorsal]

Corticarina



BIOUG05510-A05 [Dorsal]

Cyphon laevipennis



BIOUG05627-D06 [Lateral]

Sphindidae



BIOUG05501-A01 [Lateral]

Delia antiqua



BIOUG05501-A02 [Lateral]

Hylemya



BIOUG05503-B03 [Lateral]

Cecidomyiidae



BIOUG05503-B09 [Lateral]

Cecidomyiidae



BIOUG05505-G10 [Lateral]

Cecidomyiidae



BIOUG05517-B10 [Lateral]

Chironomidae



BIOUG05529-E12 [Lateral]

Chironomidae



BIOUG05531-B08 [Lateral]

Chironomidae



BIOUG05503-A06 [Lateral]
Chironomidae



BIOUG05537-A05 [Lateral]
Chironomidae



BIOUG05508-C09 [Lateral]
Chironomidae



BIOUG05514-H07 [Lateral]
Chironomidae



BIOUG05627-H08 [Lateral]
Chironomidae



BIOUG05576-H06 [Lateral]
Chironomidae



BIOUG05514-B08 [Lateral]
Chironomidae



BIOUG05503-H02 [Lateral]
Chironomidae



BIOUG05515-C08 [Lateral]
Chironomidae



BIOUG05532-F02 [Lateral]
Chironomidae



BIOUG05502-A10 [Lateral]
Chironomus cf. decorus



BIOUG05545-H08 [Lateral]
Cricotopus



BIOUG05512-E08 [Lateral]
Cricotopus tremulus



BIOUG05557-E06 [Lateral]
Gymnometriocnemus



BIOUG05519-H08 [Lateral]
Gymnometriocnemus brumalis



BIOUG05616-D06 [Lateral]
Micropsectra



BIOUG05595-G05 [Lateral]
Micropsectra nigripila



BIOUG05538-H11 [Lateral]
Orthocladius



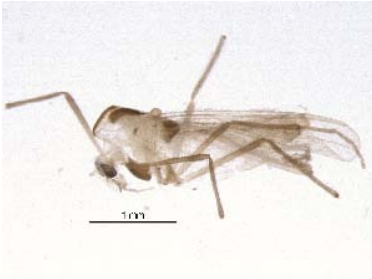
BIOUG05503-D04 [Lateral]
Orthocladius dorenus



BIOUG05625-A08 [Dorsal]
Paratanytarsus



BIOUG05572-F06 [Lateral]
Paratanytarsus



BIOUG05654-D05 [Lateral]
Paratanytarsus dissimilis



BIOUG05510-F06 [Lateral]
Paratanytarsus grimmii



BIOUG05633-H05 [Lateral]
Paratanytarsus natvigi



BIOUG05503-E10 [Lateral]
Smittia



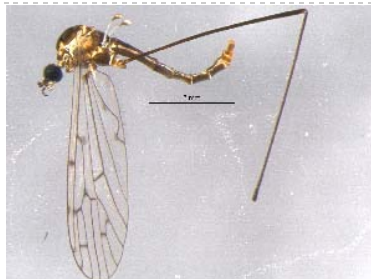
BIOUG05503-E12 [Lateral]
Smittia



BIOUG05508-A10 [Lateral]
Drosophilidae



BIOUG05501-G01 [Lateral]
Heleomyzidae



BIOUG05502-D11 [Lateral]
Symplecta



BIOUG05501-D10 [Lateral]
Helina rufitibia



BIOUG05517-A03 [Lateral]
Phoridae



BIOUG05512-E02 [Lateral]
Phoridae



BIOUG05521-D05 [Lateral]
Phoridae



BIOUG05522-A07 [Lateral]
Megaselia



BIOUG05508-B03 [Lateral]
Psychodidae



BIOUG05522-F09 [Lateral]
Psychodidae



BIOUG05501-A03 [Lateral]
Scathophaga furcata



BIOUG05503-C12 [Lateral]
Sciariidae



BIOUG05665-C05 [Lateral]
Sciariidae



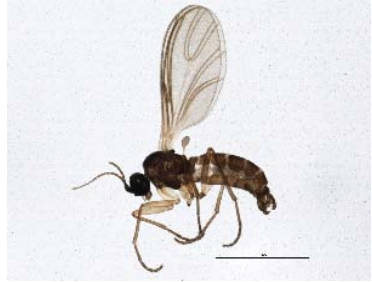
BIOUG05665-E08 [Lateral]
Sciariidae



BIOUG05503-D10 [Lateral]
Bradysia difformis



BIOUG05503-F04 [Lateral]
Lycoriella castanescens



BIOUG05503-F12 [Lateral]
Scatopsciara



BIOUG05657-H08 [Lateral]
Sphaeroceridae



BIOUG05513-C04 [Lateral]
Epalpus signifer



BIOUG05511-C01 [Lateral]
Agonopterix argillacea



BIOUG05511-C03 [Lateral]
Agonopterix canadensis



BIOUG05513-F09 [Lateral]
Agonopterix pulvipennella



BIOUG05512-D10 [Dorsal]
Elachista illectella



BIOUG05510-C06 [Lateral]
Sinoe chambersi



BIOUG05549-H04 [Dorsal]
Telphusa longifasciella



BIOUG05637-B09 [Dorsal]
Morrisonia evicta



BIOUG05513-A05 [Dorsal]
Mythimna unipuncta



BIOUG05648-B05 [Dorsal]
Islandiana flaveola



BIOUG05516-D06 [Lateral]
Entomobrya nivalis



BIOUG05560-F02 [Dorsal]
Phlaeothripidae



BIOUG05665-B02 [Lateral]
Pseudophilothrips



BIOUG05505-B11 [Dorsal]
Taeniothrips inconsequens



BIOUG05592-D06 [Dorsal]
Lepyronia quadrangularis



BIOUG05637-D04 [Dorsal]
Lygaeus kalmii

