

School Malaise Trap Program

Species Image Library

The images of the species collected in your Malaise trap are shown below. A single representative for each species was selected to be photographed; in some cases, only a damaged specimen was available.

Re-render images : per page

300 Images Per Page - Pages : 1



BIOUG05528-A06 [Lateral]
Aphaenogaster



BIOUG05507-D08 [Lateral]
Lasius neoniger



BIOUG05502-A07 [Lateral]
Prenolepis imparis



BIOUG05529-F12 [Lateral]
Ichneumonidae



BIOUG05528-A10 [Dorsal]
Chaetocnema concinna



BIOUG05501-G04 [Dorsal]
Enoclerus nigripes



BIOUG05523-B11 [Dorsal]
Harmonia axyridis



BIOUG05502-B05 [Lateral]
Curculionidae



BIOUG05516-B11 [Dorsal]
Stenichnus scutellaris



BIOUG05509-G10 [Lateral]

Tachyporus chrysomelinus



BIOUG05511-H05 [Lateral]

Anisopodidae



BIOUG05501-A01 [Lateral]

Delia antiqua



BIOUG05501-A12 [Lateral]

Eutrichota



BIOUG05501-A02 [Lateral]

Hylemya



BIOUG05502-H06 [Lateral]

Hylemya



BIOUG05527-G04 [Lateral]

Lasiomma



BIOUG05513-B03 [Lateral]

Calliphora livida



BIOUG05501-F08 [Lateral]

Cynomya cadaverina



BIOUG05501-D07 [Lateral]

Pollenia pediculata



BIOUG05518-B06 [Lateral]

Pollenia rudis



BIOUG05502-H03 [Lateral]

Pollenia vagabunda



BIOUG05503-B09 [Lateral]

Cecidomyiidae



BIOUG05503-B03 [Lateral]

Cecidomyiidae



BIOUG05506-C02 [Lateral]

Cecidomyiidae



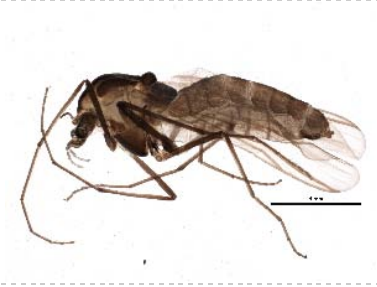
BIOUG05528-G08 [Lateral]
Cecidomyiidae



BIOUG05507-C10 [Lateral]
Cecidomyiidae



BIOUG05505-G10 [Lateral]
Cecidomyiidae



BIOUG05503-A06 [Lateral]
Chironomidae



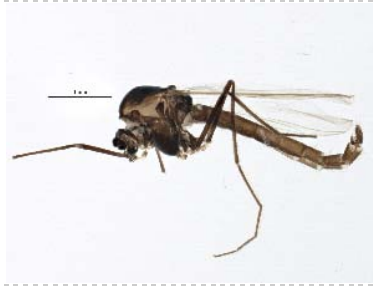
BIOUG05503-H02 [Lateral]
Chironomidae



BIOUG05519-A07 [Lateral]
Chironomidae



BIOUG05517-D04 [Lateral]
Chironomidae



BIOUG05506-C04 [Lateral]
Chironomidae



BIOUG05503-A11 [Lateral]
Chironomidae



BIOUG05503-B05 [Lateral]
Chironomidae



BIOUG05508-D08 [Lateral]
Chironomidae



BIOUG05519-H02 [Lateral]
Chironomidae



BIOUG05503-A09 [Lateral]
Chironomidae



BIOUG05519-A08 [Lateral]
Chironomidae



BIOUG05529-B02 [Lateral]
Chironomidae



BIOUG05528-D06 [Lateral]
Chironomidae



BIOUG05529-E12 [Lateral]
Chironomidae



BIOUG05516-F06 [Lateral]
Chironomidae



BIOUG05528-D10 [Lateral]
Chironomidae



BIOUG05503-A08 [Lateral]
Bryphaenocladus



BIOUG05502-A10 [Lateral]
Chironomus cf. decorus



BIOUG05515-B03 [Lateral]
Chironomus matusus



BIOUG05515-A04 [Lateral]
Chironomus melanesens



BIOUG05528-F04 [Lateral]
Eukiefferiella claripennis



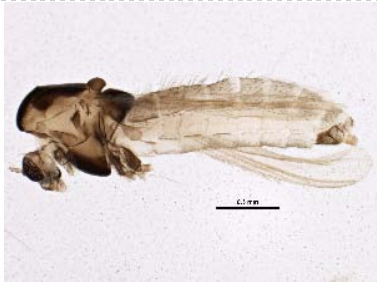
BIOUG05519-H08 [Lateral]
Gymnometriocnemus brumalis



BIOUG05503-D04 [Lateral]
Orthocladus dorensis



BIOUG05514-D06 [Lateral]
Paraphaenocladus impensus



BIOUG05528-C04 [Lateral]
Paratanyarsus



BIOUG05516-G04 [Lateral]
Psectrocladius cf. limbatellus



BIOUG05503-E12 [Lateral]
Smittia



BIOUG05529-E07 [Lateral]
Smittia



BIOUG05503-E10 [Lateral]
Smittia



BIOUG05503-C01 [Lateral]
Smittia



BIOUG05503-A03 [Lateral]
Smittia



BIOUG05528-E10 [Lateral]
Tvetenia paucunca



BIOUG05508-A10 [Lateral]
Drosophilidae



BIOUG05501-G01 [Lateral]
Heleomyzidae



BIOUG05747-B02 [Lateral]
Eudasyphora



BIOUG05501-D10 [Lateral]
Helina rufitibia



BIOUG05518-E02 [Lateral]
Muscina levida



BIOUG05552-B12 [Lateral]
Mycetophilidae



BIOUG05517-A03 [Lateral]
Phoridae



BIOUG05512-E02 [Lateral]
Phoridae



BIOUG05521-A04 [Lateral]
Phoridae



BIOUG05522-C01 [Lateral]
Megaselia



BIOUG05522-A07 [Lateral]
Megaselina



BIOUG05529-A04 [Lateral]
Psychodidae



BIOUG05501-A03 [Lateral]
Scathophaga furcata



BIOUG05501-A07 [Lateral]
Scathophaga stercoraria



BIOUG05514-D03 [Lateral]
Sciaridae



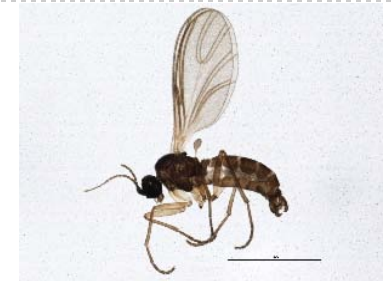
BIOUG05503-C12 [Lateral]
Sciaridae



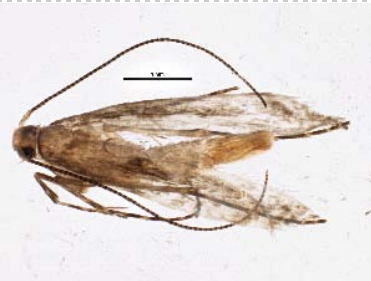
BIOUG05503-F04 [Lateral]
Lycoriella castanescens



BIOUG05507-C12 [Lateral]
Scatopsiara



BIOUG05503-F12 [Lateral]
Scatopsiara



BIOUG05528-B11 [Lateral]
Micrurapteryx salicifoliella



BIOUG05528-B12 [Lateral]
Parectopa albicostella



BIOUG05660-G11 [Dorsal]
Cheiracanthium mildei



BIOUG05505-B11 [Dorsal]
Taeniothrips inconsequens



BIOUG05507-F04 [Dorsal]
Empoasca decipiens



BIOUG05527-H04 [Dorsal]
Xerophloea major



BIOUG05724-G09 [Dorsal]

Lygus plagiatus

Logged in as : Brianne St. Jacques

Build Time : 0 s | Render Time : 5.015 s

[About Us](#) | [Citation](#) | [Contact Us](#)

Copyright 2013 - Biodiversity Institute of Ontario