

# School Malaise Trap Program

## Species Image Library

The images of the species collected in your Malaise trap are shown below. A single representative for each species was selected to be photographed; in some cases, only a damaged specimen was available.

Re-render images :  per page

300 Images Per Page - Pages : 1



BIOUG05507-D11 [Lateral]  
Diapriidae



BIOUG05525-B03 [Lateral]  
Figitidae



BIOUG05502-B08 [Lateral]  
Formica glacialis



BIOUG05507-D08 [Lateral]  
Lasius neoniger



BIOUG05529-H01 [Lateral]  
Myrmica americana



BIOUG05505-B08 [Lateral]  
Tersilochinae



BIOUG05512-A02 [Dorsal]  
Anthicidae



BIOUG05567-A10 [Dorsal]  
Chrysomelidae



BIOUG05501-G08 [Dorsal]  
Altica chalybea



BIOUG05533-H02 [Dorsal]  
*Altica corni*



BIOUG05528-A10 [Dorsal]  
*Chaetocnema concinna*



BIOUG05509-G09 [Dorsal]  
*Atomaria*



BIOUG05567-B12 [Lateral]  
Latridiidae



BIOUG05507-H02 [Dorsal]  
Latridiidae



BIOUG05551-C02 [Lateral]  
*Amischa analis*



BIOUG05516-B10 [Dorsal]  
*Anotylus tetracarınatus*



BIOUG05509-G10 [Lateral]  
*Tachyporus chrysolınus*



BIOUG05501-A01 [Lateral]  
*Delia antiqua*



BIOUG05567-G12 [Lateral]  
*Egle*



BIOUG05501-F08 [Lateral]  
*Cynomya cadaverina*



BIOUG05518-B12 [Lateral]  
*Pollenia angustigena*



BIOUG05501-D07 [Lateral]  
*Pollenia pediculata*



BIOUG05518-B06 [Lateral]  
*Pollenia rudis*



BIOUG05503-B03 [Lateral]  
Cecidomyiidae



BIOUG05503-B06 [Lateral]  
Chironomidae



BIOUG05503-A06 [Lateral]  
Chironomidae



BIOUG05503-H02 [Lateral]  
Chironomidae



BIOUG05568-B07 [Lateral]  
Chironomidae



BIOUG05506-C04 [Lateral]  
Chironomidae



BIOUG05532-F02 [Lateral]  
Chironomidae



BIOUG05503-B05 [Lateral]  
Chironomidae



BIOUG05529-E12 [Lateral]  
Chironomidae



BIOUG05514-B04 [Lateral]  
Chironomidae



BIOUG05522-C05 [Lateral]  
Chironomidae



BIOUG05507-H05 [Lateral]  
Chironomidae



BIOUG05558-D08 [Lateral]  
Chironomidae



BIOUG05521-F01 [Lateral]  
Chironomidae



BIOUG05514-B07 [Lateral]  
Chironomidae



BIOUG05504-B10 [Lateral]  
Chironomidae



BIOUG05522-B11 [Lateral]  
*Chironomus pseudothummi*



BIOUG05512-E08 [Lateral]  
*Cricotopus tremulus*



BIOUG05557-E06 [Lateral]  
*Gymnometrioctenemus*



BIOUG05519-H08 [Lateral]  
*Gymnometrioctenemus brumalis*



BIOUG05503-D04 [Lateral]  
*Orthocladius doreus*



BIOUG05517-F03 [Lateral]  
*Orthocladius oliveri*



BIOUG05514-D06 [Lateral]  
*Paraphaenocladus impensus*



BIOUG05546-A02 [Lateral]  
*Psectrocladius*



BIOUG05503-E10 [Lateral]  
*Smittia*



BIOUG05503-E12 [Lateral]  
*Smittia*



BIOUG05502-D11 [Lateral]  
*Symplecta*



BIOUG05510-H10 [Lateral]  
*Lonchaea*



BIOUG05565-D05 [Lateral]  
Muscidae



BIOUG05501-D10 [Lateral]  
*Helina rufitibia*



BIOUG05514-G10 [Lateral]  
*Megaselia*



BIOUG05508-B03 [Lateral]  
Psychodidae



BIOUG05501-A03 [Lateral]  
Scathophaga furcata



BIOUG05501-A07 [Lateral]  
Scathophaga stercoraria



BIOUG05503-F04 [Lateral]  
Lycoriella castanescens



BIOUG05515-G09 [Lateral]  
Themira nigricornis



BIOUG05568-H01 [Lateral]  
Sphaeroceridae



BIOUG05501-D08 [Lateral]  
Eupeodes americanus



BIOUG05513-C04 [Lateral]  
Epalpus signifier



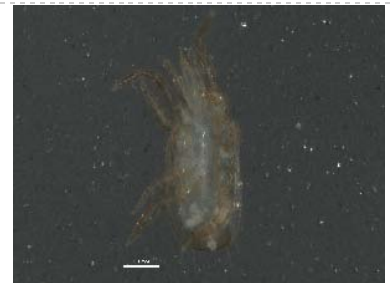
BIOUG05501-H05 [Lateral]  
Hemerobius



BIOUG05508-A07 [Dorsal]  
Ascidae



BIOUG05525-F07 [Dorsal]  
Ascidae



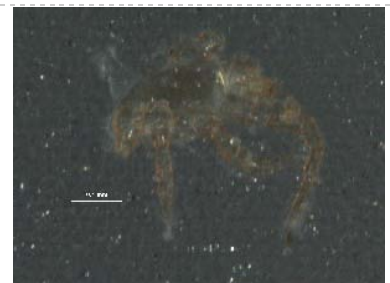
BIOUG05505-C08 [Ventral]  
Digamasellidae



BIOUG05566-E12 [Dorsal]  
Macrochelidae



BIOUG05566-E05 [Dorsal]  
Melicharidae



BIOUG05525-F10 [Lateral]  
Melicharidae



BIOUG05554-D03 [Dorsal]  
*Ceratinella brunnea*



BIOUG05567-D11 [Lateral]  
*Erigone atra*



BIOUG05510-C01 [Dorsal]  
*Piratulla minuta*



BIOUG05595-D07 [Lateral]  
*Lepidosira*



BIOUG05564-B10 [Lateral]  
*Allocapnia nivicola*



BIOUG05567-C07 [Lateral]  
*Idiocerus setaceus*



BIOUG05724-G09 [Dorsal]  
*Lygus plagiatus*