

# School Malaise Trap Program

## Species Image Library

The images of the species collected in your Malaise trap are shown below. A single representative for each species was selected to be photographed; in some cases, only a damaged specimen was available.

Re-render images :  per page

300 Images Per Page - Pages : 1



BIOUG05509-F10 [Lateral]  
Hymenoptera



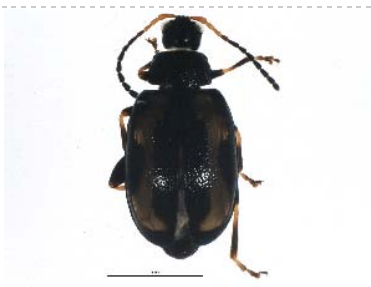
BIOUG05502-B08 [Lateral]  
Formica glacialis



BIOUG05507-D08 [Lateral]  
Lasius neoniger



BIOUG05502-A07 [Lateral]  
Prenolepis imparis



BIOUG05520-C10 [Dorsal]  
Phyllotreta striolata



BIOUG05501-G04 [Dorsal]  
Enoclerus nigripes



BIOUG05548-A08 [Dorsal]  
Psyllobora vigintimaculata



BIOUG05502-B05 [Lateral]  
Curculionidae



BIOUG05548-A11 [Dorsal]  
Scirtidae



BIOUG05548-B02 [Dorsal]  
Scirtidae



BIOUG05510-A05 [Dorsal]  
*Cyphon laevipennis*



BIOUG05509-G10 [Lateral]  
*Tachyporus chrysomelinus*



BIOUG05501-A01 [Lateral]  
*Delia antiqua*



BIOUG05502-H06 [Lateral]  
*Hylemya*



BIOUG05535-G05 [Lateral]  
*Asteia beata*



BIOUG05513-B03 [Lateral]  
*Calliphora livida*



BIOUG05501-F08 [Lateral]  
*Cynomya cadaverina*



BIOUG05502-H03 [Lateral]  
*Pollenia vagabunda*



BIOUG05507-C10 [Lateral]  
Cecidomyiidae



BIOUG05503-B09 [Lateral]  
Cecidomyiidae



BIOUG05503-B03 [Lateral]  
Cecidomyiidae



BIOUG05512-H02 [Lateral]  
Cecidomyiidae



BIOUG05503-A06 [Lateral]  
Chironomidae



BIOUG05503-A11 [Lateral]  
Chironomidae





BIOUG05503-H02 [Lateral]  
Chironomidae



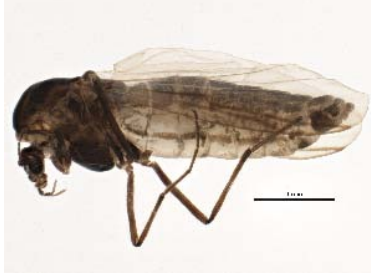
BIOUG05545-H05 [Lateral]  
Chironomidae



BIOUG05514-B04 [Lateral]  
Chironomidae



BIOUG05506-F11 [Lateral]  
Chironomidae



BIOUG05510-G12 [Lateral]  
Chironomidae



BIOUG05514-B08 [Lateral]  
Chironomidae



BIOUG05503-B06 [Lateral]  
Chironomidae



BIOUG05508-D08 [Lateral]  
Chironomidae



BIOUG05505-F01 [Lateral]  
Chironomidae



BIOUG05546-A08 [Lateral]  
Chironomidae



BIOUG05541-E09 [Lateral]  
Chironomidae



BIOUG05503-B05 [Lateral]  
Chironomidae



BIOUG05547-A09 [Lateral]  
Chironomidae



BIOUG05547-C07 [Lateral]  
Chironomidae



BIOUG05515-C08 [Lateral]  
Chironomidae



BIOUG05508-C09 [Lateral]  
Chironomidae



BIOUG05547-C11 [Dorsal]  
Chironomidae



BIOUG05503-A08 [Lateral]  
Bryophaenocladius



BIOUG05545-H08 [Lateral]  
Cricotopus



BIOUG05512-E08 [Lateral]  
Cricotopus tremulus



BIOUG05547-B10 [Lateral]  
Limnophyes



BIOUG05505-E11 [Lateral]  
Orthocladius



BIOUG05503-D04 [Lateral]  
Orthocladius dorensis



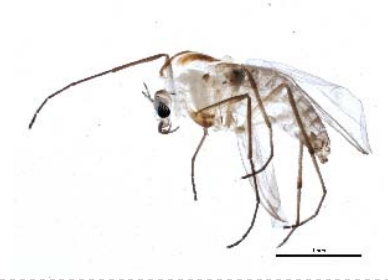
BIOUG05517-F03 [Lateral]  
Orthocladius oliveri



BIOUG05514-D06 [Lateral]  
Paraphaenocladius impensus



BIOUG05546-D03 [Lateral]  
Paratanytarsus



BIOUG05546-A02 [Lateral]  
Psectrocladius



BIOUG05503-E12 [Lateral]  
Smittia



BIOUG05503-A03 [Lateral]  
Smittia



BIOUG05503-C01 [Lateral]  
Smittia





BIOUG05503-E10 [Lateral]  
Smittia



BIOUG05502-G10 [Lateral]  
Thienemanniella xena



BIOUG05546-C06 [Lateral]  
Chloropidae



BIOUG05531-D09 [Lateral]  
Chloropidae



BIOUG05517-G09 [Lateral]  
Dolichopodidae



BIOUG05508-A10 [Lateral]  
Drosophilidae



BIOUG05544-F04 [Lateral]  
Drosophila affinis



BIOUG05502-D11 [Lateral]  
Symplecta



BIOUG05510-H10 [Lateral]  
Lonchaea



BIOUG05501-D10 [Lateral]  
Helina rufitibia



BIOUG05545-G05 [Lateral]  
Pediciidae



BIOUG05715-C06 [Lateral]  
Phoridae



BIOUG05521-A04 [Lateral]  
Phoridae



BIOUG05547-B07 [Lateral]  
Phoridae



BIOUG05531-A05 [Lateral]  
Phoridae



BIOUG05545-H07 [Lateral]

Phoridae



BIOUG05547-B02 [Lateral]

Megaselia



BIOUG05505-G01 [Lateral]

Psychodidae



BIOUG05508-B03 [Lateral]

Psychodidae



BIOUG05501-A03 [Lateral]

Scathophaga furcata



BIOUG05525-G01 [Lateral]

Sciaridae



BIOUG05503-C12 [Lateral]

Sciaridae



BIOUG05508-B05 [Lateral]

Sciaridae



BIOUG05546-B10 [Lateral]

Sciaridae



BIOUG05514-D03 [Lateral]

Sciaridae



BIOUG05519-D06 [Lateral]

Sciaridae



BIOUG05506-G05 [Lateral]

Sciaridae



BIOUG05503-D10 [Lateral]

Bradysia difformis



BIOUG05503-F04 [Lateral]

Lycoriella castanescens



BIOUG05536-G03 [Lateral]

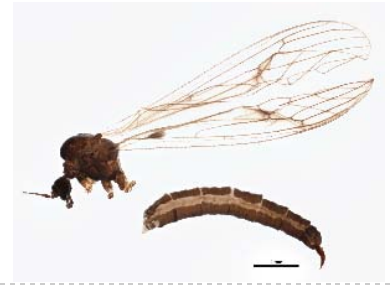
Simulium vittatum



BIOUG05501-D08 [Lateral]  
*Eupeodes americanus*



BIOUG05502-G11 [Dorsal]  
*Toxomerus geminatus*



BIOUG05508-C07 [Lateral]  
Trichocera



BIOUG05516-D06 [Lateral]  
*Entomobrya nivalis*



BIOUG05505-B11 [Dorsal]  
*Taeniothrips inconsequens*



BIOUG05548-B05 [Dorsal]  
Empoasca



BIOUG05724-G09 [Dorsal]  
*Lygus plagiatus*