

School Malaise Trap Program

Species Image Library

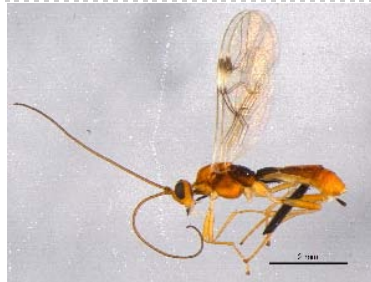
The images of the species collected in your Malaise trap are shown below. A single representative for each species was selected to be photographed; in some cases, only a damaged specimen was available.

Re-render images : per page

300 Images Per Page - Pages : 1



BIOUG05672-B05 [Lateral]
Braconidae



BIOUG05511-C06 [Lateral]
Braconidae



BIOUG05507-D11 [Lateral]
Diapriidae



BIOUG05672-B10 [Lateral]
Platygasteridae



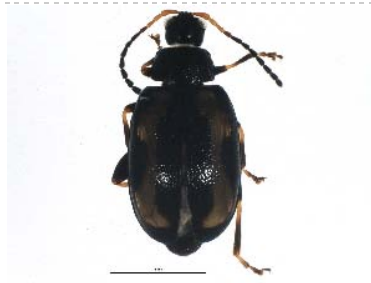
BIOUG05516-A04 [Lateral]
Platygasteridae



BIOUG05512-A02 [Dorsal]
Anthicidae



BIOUG05551-B09 [Dorsal]
Phyllotreta cruciferae



BIOUG05520-C10 [Dorsal]
Phyllotreta striolata



BIOUG05516-C06 [Dorsal]
Latridiidae



BIOUG05567-B12 [Lateral]

Latridiidae



BIOUG05672-A12 [Dorsal]

Anthocomus



BIOUG05533-G01 [Dorsal]

Scirtidae



BIOUG05672-A10 [Dorsal]

Scirtidae



BIOUG05548-A11 [Dorsal]

Scirtidae



BIOUG05509-G12 [Dorsal]

Tachyporus nitidulus



BIOUG05503-G08 [Lateral]

Agromyzidae



BIOUG05511-H05 [Lateral]

Anisopodidae



BIOUG05523-E08 [Lateral]

Anthomyiidae



BIOUG05501-A01 [Lateral]

Delia antiqua



BIOUG05501-A02 [Lateral]

Hylemya



BIOUG05501-D07 [Lateral]

Pollenia pediculata



BIOUG05518-B06 [Lateral]

Pollenia rudis



BIOUG05503-B09 [Lateral]

Cecidomyiidae



BIOUG05503-B03 [Lateral]

Cecidomyiidae



BIOUG05505-A07 [Lateral]
Chironomidae



BIOUG05503-A11 [Lateral]
Chironomidae



BIOUG05508-C09 [Lateral]
Chironomidae



BIOUG05505-F01 [Lateral]
Chironomidae



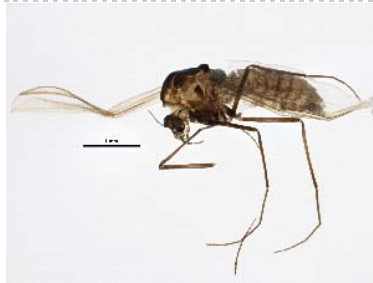
BIOUG05503-B05 [Lateral]
Chironomidae



BIOUG05506-C04 [Lateral]
Chironomidae



BIOUG05503-H02 [Lateral]
Chironomidae



BIOUG05506-G10 [Lateral]
Chironomidae



BIOUG05503-G06 [Lateral]
Chironomidae



BIOUG05514-H06 [Lateral]
Chironomidae



BIOUG05618-D07 [Lateral]
Chironomidae



BIOUG05671-G04 [Lateral]
Chironomidae



BIOUG05669-D10 [Lateral]
Chironomidae



BIOUG05507-H05 [Lateral]
Chironomidae



BIOUG05504-D09 [Lateral]
Chironomidae



BIOUG05514-B07 [Lateral]
Chironomidae



BIOUG05503-A08 [Lateral]
Bryophaenocladus



BIOUG05502-A10 [Lateral]
Chironomus cf. decorus



BIOUG05515-A04 [Lateral]
Chironomus melanescens



BIOUG05515-E11 [Lateral]
Chironomus riparius



BIOUG05504-B05 [Lateral]
Cricotopus sylvestris



BIOUG05616-D06 [Lateral]
Micropsectra



BIOUG05616-E12 [Lateral]
Micropsectra



BIOUG05595-G05 [Lateral]
Micropsectra nigripila



BIOUG05543-E09 [Lateral]
Microtendipes pedellus grp.



BIOUG05514-D06 [Lateral]
Paraphaenocladus impensus



BIOUG05581-F11 [Lateral]
Psectrocladius barbimanus



BIOUG05503-A03 [Lateral]
Smittia



BIOUG05503-C01 [Lateral]
Smittia



BIOUG05503-E12 [Lateral]
Smittia



BIOUG05503-E10 [Lateral]

Smittia



BIOUG05517-B12 [Lateral]

Smittia



BIOUG05570-H09 [Lateral]

Smittia edwardsi



BIOUG05524-A08 [Lateral]

Elachiptera sibirica



BIOUG05502-D11 [Lateral]

Symplecta



BIOUG05510-H10 [Lateral]

Lonchaea



BIOUG05501-D10 [Lateral]

Helina rufitibia



BIOUG05518-E02 [Lateral]

Muscina levida



BIOUG05502-C04 [Lateral]

Mycetophila fungorum



BIOUG05547-B07 [Lateral]

Phoridae



BIOUG05531-A05 [Lateral]

Phoridae



BIOUG05522-A07 [Lateral]

Megaselia



BIOUG05547-B02 [Lateral]

Megaselia



BIOUG05501-A03 [Lateral]

Scathophaga furcata



BIOUG05503-C12 [Lateral]

Sciaridae



BIOUG05580-D01 [Lateral]
Sciaridae



BIOUG05503-F04 [Lateral]
Lycoriella castanescens



BIOUG05689-F03 [Lateral]
Scatopsiara



BIOUG05503-F12 [Lateral]
Scatopsiara



BIOUG05514-A04 [Lateral]
Scatopsiara atomaria



BIOUG05533-D05 [Dorsal]
Blattisociidae



BIOUG05610-G03 [Lateral]
Acrolepiopsis assectella



BIOUG05513-A05 [Dorsal]
Mythimna unipuncta



BIOUG05515-B06 [Dorsal]
Plutella xylostella



BIOUG05672-E02 [Dorsal]
Neoscona arabesca



BIOUG05601-H11 [Dorsal]
Walckenaeria spiralis



BIOUG05662-F02 [Dorsal]
Trochosa ruricola



BIOUG05660-G11 [Dorsal]
Cheiracanthium mildei



BIOUG05536-E07 [Dorsal]
Philodromus rufus vibrans



BIOUG05595-D07 [Lateral]
Lepidosira



BIOUG05505-B11 [Dorsal]
Taeniothrips inconsequens



BIOUG05534-D03 [Lateral]
Nabis americanoferus



BIOUG05516-A12 [Lateral]
Psyllidae