

School Malaise Trap Program

Species Image Library

The images of the species collected in your Malaise trap are shown below. A single representative for each species was selected to be photographed; in some cases, only a damaged specimen was available.

Re-render images: per row

300 Records Per Page - Pages: 1



[Dorsal]
Phytoseiidae
BIN URI: BOLD:ACP8142



[Dorsal]
Oribatulidae
BIN URI: BOLD:ACP8854



[Dorsal]
Anystidae
BIN URI: BOLD:AAM7961



[Dorsal]
Anystidae
BIN URI: BOLD:ACM0934



[Lateral]
Abrolophus
BIN URI: BOLD:ACI9840



[Dorsal]
Tetranychidae
BIN URI: BOLD:ACP9194



[Lateral]
Entomobrya unostriata
BIN URI: BOLD:AAH6630



[Lateral]
Entomobrya multifasciata
BIN URI: BOLD:AAA7242



[Lateral]
Entomobryomorpha
BIN URI: BOLD:ACF9315



[Lateral]
Collembola
BIN URI: BOLD:ACC0359



[Lateral]
Sminthurinus
BIN URI: BOLD:ACH6717



[Dorsal]
Trixagus chevroleti
BIN URI: BOLD:ACF8583



[Dorsal]
Trixagus
BIN URI: BOLD:AAU6966



[Lateral]
Cecidomyiidae
BIN URI: BOLD:AAN5283



[Lateral]
Chironomus cf. decorus
BIN URI: BOLD:AAB7030



[Lateral]
Cricotopus
BIN URI: BOLD:AAN5318



[Lateral]
Chironomidae
BIN URI: BOLD:AAP5921



[Lateral]
Chironomidae
BIN URI: BOLD:AAG1004



[Lateral]
Heterotriisocladius
BIN URI: BOLD:AAH0836



[Lateral]
Chironomidae
BIN URI: BOLD:AAN5369



[Lateral]
Microspectra subletteorum
BIN URI: BOLD:AAF7088



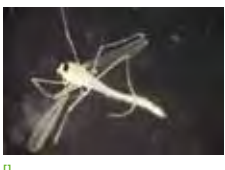
[Lateral]
Orthocladius
BIN URI: BOLD:AAB2641



[Dorsal]
Paracladopelma winnelli
BIN URI: BOLD:AAK4963



[Lateral]
Chironomidae
BIN URI: BOLD:AAI2688



[Lateral]
Paratanytarsus
BIN URI: BOLD:AAV6213



[Lateral]
Chironomidae
BIN URI: BOLD:AAM7064



[Lateral]
Tanytarsus guerlus
BIN URI: BOLD:AAC4525



[Lateral]
Chironomidae
BIN URI: BOLD:ACI3270



[Lateral]
Chironomidae
BIN URI: BOLD:ACC4669



[Lateral]
Chironomidae
BIN URI: BOLD:AAN5342



[Lateral]
Chironomidae
BIN URI: BOLD:AAU6612



[Lateral]
Chironomidae
BIN URI: BOLD:ACF7513



[Lateral]
Chironomidae
BIN URI: BOLD:ACF8490



[Lateral]
Aedes vexans
BIN URI: BOLD:AAA7067



[Lateral]
Sciaridae
BIN URI: BOLD:AAM9242



[Lateral]
Sciaridae
BIN URI: BOLD:AAN6447



[Lateral]
Sciaridae
BIN URI: BOLD:ABU5520



[Lateral]
Sciaridae
BIN URI: BOLD:ABA6407



[Lateral]
Sciaridae
BIN URI: BOLD:ACF6849



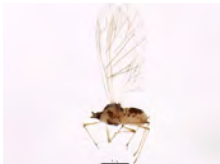
[Lateral]
Sciaridae
BIN URI: BOLD:AAV6412



[Dorsal]
Hyperomyzus
BIN URI: BOLD:AAV6754



[Lateral]
Hemiptera
BIN URI: BOLD:AAB4239



[Lateral]
Rhopalomyzus lonicerarum
BIN URI: BOLD:AAC4637



[Lateral]
Rhopalomyzus
BIN URI: BOLD:ACA4534



[Dorsal]
Rhopalosiphum padi
BIN URI: BOLD:AAA9899



[Lateral]
Idiocerus formosus
BIN URI: BOLD:AAG2890



[Lateral]
Typhlocyba
BIN URI: BOLD:ABA5828



[Lateral]
Hemiptera
BIN URI: BOLD:ABY8347



[Lateral]
Hymenoptera
BIN URI: BOLD:AAU8585



[Lateral]
Braconidae
BIN URI: BOLD:AAG1352



[Lateral]
Cynipidae
BIN URI: BOLD:ACP9016



[Lateral]
Hymenoptera
BIN URI: BOLD:AAM7487



[Lateral]
Diapriidae
BIN URI: BOLD:ACP9218



[Lateral]
Myrmica AF-smi
BIN URI: BOLD:AAA1840



[Lateral]
Telenomus
BIN URI: BOLD:AAV9192



[Lateral]
Platygasteridae
BIN URI: BOLD:AAU8457



[Dorsal]
Bucculatrix pomifoliella
BIN URI: BOLD:AAD2085



[Lateral]
Franklaniella
BIN URI: BOLD:AAL2817