

School Malaise Trap Program

Species Image Library

The images of the species collected in your Malaise trap are shown below. A single representative for each species was selected to be photographed; in some cases, only a damaged specimen was available.

Re-render images: per row

300 Records Per Page - Pages: 1



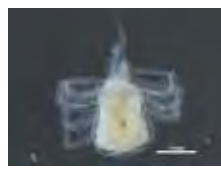
[Dorsal]
Zygiella atrica
BIN URI: BOLD:AAC8031



[Dorsal]
Laelapidae
BIN URI: BOLD:ACP7965



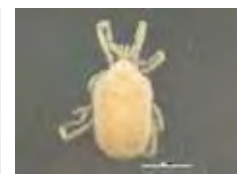
[Dorsal]
Mesostigmata
BIN URI: BOLD:ACJ6467



[Dorsal]
Anystidae
BIN URI: BOLD:ACM0934



[Dorsal]
Anystidae
BIN URI: BOLD:ABW5642



[Dorsal]
Abrolophus
BIN URI: BOLD:AAN6614



[Lateral]
Collembola
BIN URI: BOLD:ACC0595



[Lateral]
Bourletiella
BIN URI: BOLD:ABX0027



[Dorsal]
Orthoperus scutellaris
BIN URI: BOLD:AAU7040



[Dorsal]
Corticarina
BIN URI: BOLD:AAH0256



[Dorsal]
Tachyporus nitidulus
BIN URI: BOLD:ABA9096



[Lateral]
Tachyporus rulomus
BIN URI: BOLD:AAP7029



[Lateral]
Cecidomyiidae
BIN URI: BOLD:ACP9708



[Lateral]
Cecidomyiidae
BIN URI: BOLD:AAV6455



[Lateral]
Cecidomyiidae
BIN URI: BOLD:AAN5186



[Lateral]
Cecidomyiidae
BIN URI: BOLD:AAN5219



[Lateral]
Cecidomyiidae
BIN URI: BOLD:ACF3507



[Lateral]
Cecidomyiidae
BIN URI: BOLD:AAM6129



[Lateral]
Cecidomyiidae
BIN URI: BOLD:AAN5283



[Lateral]
Chironomus cf. decorus
BIN URI: BOLD:AAB7030



[Lateral]
Cricotopus
BIN URI: BOLD:AAN5318



[Lateral]
Heterotrissocladius
BIN URI: BOLD:AAV0836



[Lateral]
Chironomidae
BIN URI: BOLD:AAN5369



[Lateral]
Chironomidae
BIN URI: BOLD:ABU5525



[Lateral]
Micropspectra subletteorum
BIN URI: BOLD:AAF7088



[Lateral]
Chironomidae
BIN URI: BOLD:ACC4669



[Lateral]
Chironomidae
BIN URI: BOLD:AAN5342



[Lateral]
Chironomidae
BIN URI: BOLD:ACF0915



[Lateral]
Chironomidae
BIN URI: BOLD:ACF8490



[Lateral]
Chironomidae
BIN URI: BOLD:AAM6246



[Lateral]
Dolichopodidae
BIN URI: BOLD:AAG9693



[Lateral]
Heleomyzidae
BIN URI: BOLD:AAE1978



[Lateral]
Diptera
BIN URI: BOLD:ACJ0170



[Lateral]
Phaonia
BIN URI: BOLD:ABU9891



[Lateral]
Diptera
BIN URI: BOLD:AAG6743



[Lateral]
Sciaridae
BIN URI: BOLD:ACE3123



[Lateral]
Sciaridae
BIN URI: BOLD:ABU5521



[Lateral]
Sciaridae
BIN URI: BOLD:ABA6407



[Lateral]
Sciaridae
BIN URI: BOLD:ACI3619



[Lateral]
Toxomerus geminatus
BIN URI: BOLD:AAC1312



[Dorsal]
Hemiptera
BIN URI: BOLD:AAN8408



[Lateral]
Aphis glycines
BIN URI: BOLD:AAB7938



[Lateral]
Aphis nerii
BIN URI: BOLD:AAC1372



[Dorsal]
Pemphigus sp. B RGF-2010
BIN URI: BOLD:ABX6182



[Dorsal]
Pterocomma smithiae
BIN URI: BOLD:AAF5269



[Lateral]
Ceratagallia sanguinolenta
BIN URI: BOLD:AAG2874



[Lateral]
Empoasca
BIN URI: BOLD:AAN8250



[Lateral]
Empoasca
BIN URI: BOLD:ACF5026



[Lateral]
Erythroneura vitifex
BIN URI: BOLD:AAJ6742



[Dorsal]
Corythucha marmorata
BIN URI: BOLD:AAR9127



[Lateral]
Aphelinus varipes
BIN URI: BOLD:ABW3282



[Lateral]
Hymenoptera
BIN URI: BOLD:ACF4040



[Lateral]
Aphidiinae
BIN URI: BOLD:AAN7770



[Lateral]
Cotesia
BIN URI: BOLD:AAA9386



[Lateral]
Praon
BIN URI: BOLD:ACE2830



[Lateral]
Braconidae
BIN URI: BOLD:ABA8039



[Lateral]
Hymenoptera
BIN URI: BOLD:AAU8585



[Lateral]
Braconidae
BIN URI: BOLD:AAP6716



[Lateral]
Hymenoptera
BIN URI: BOLD:AAG1429



[Lateral]
Braconidae
BIN URI: BOLD:AAG1439



[Dorsal]
Hymenoptera
BIN URI: BOLD:ACJ7225



[Dorsal]
Tetrastichinae
BIN URI: BOLD:ACP8539



[Dorsal]
Brachymyrmex depilis
BIN URI: BOLD:AAD7490



[Dorsal]
Formicidae
BIN URI: BOLD:AAF0890



[Lateral]
Lasius
BIN URI: BOLD:AAB9126



[Lateral]
Lasius nearcticus
BIN URI: BOLD:AAD1528



[Lateral]
Myrmica americana
BIN URI: BOLD:AAA1839



[Lateral]
Prenolepis imparis
BIN URI: BOLD:AAC1302



[Dorsal]
Agapostemon virescens
BIN URI: BOLD:AAB2708



[Lateral]
Sphecodes confertus
BIN URI: BOLD:ACE8610



[Lateral]
Hymenoptera
BIN URI: BOLD:AAG7721



[Lateral]
Megaspilidae
BIN URI: BOLD:ABY0357



[Dorsal]
Hymenoptera
BIN URI: BOLD:ACJ7345



[Lateral]
Mymaridae
BIN URI: BOLD:ABV9379



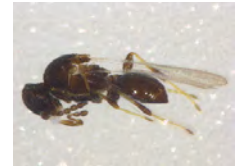
[Lateral]
Anagrus
BIN URI: BOLD:ACE0249



[Lateral]
Mymaridae
BIN URI: BOLD:ACB6947



[Lateral]
Platygastriidae
BIN URI: BOLD:AAG7883



[Lateral]
Synopeas
BIN URI: BOLD:AAU8562



[Lateral]
Synopeas
BIN URI: BOLD:AAU8605



[Lateral]
Telenomus
BIN URI: BOLD:AAV9192



[Lateral]
Telenomus
BIN URI: BOLD:ACP9092



[Lateral]
Telenomus
BIN URI: BOLD:ACP9309



[Lateral]
Platygastriidae
BIN URI: BOLD:ACP7493



[Lateral]
Platygastriidae
BIN URI: BOLD:AAU8342



[Lateral]
Hymenoptera
BIN URI: BOLD:AAG8271



[Lateral]
Platygastriidae
BIN URI: BOLD:ACJ0386



[Lateral]
Platygastriidae
BIN URI: BOLD:ACP9228



[Lateral]
Platygastriinae
BIN URI: BOLD:ACP7975



[Lateral]
Hymenoptera
BIN URI: BOLD:ACE0479



[Dorsal]
Metallus lanceolatus
BIN URI: BOLD:AAP1085



[Dorsal]
Stigmella
BIN URI: BOLD:ACP7362



[Lateral]
Coniopteryx
BIN URI: BOLD:ACJ6860



[Lateral]
Lachesilla
BIN URI: BOLD:ACP9620



[Lateral]
Psocoptera
BIN URI: BOLD:AAN8450



[Lateral]
Psocoptera
BIN URI: BOLD:ACK6397



[Lateral]
Psocoptera
BIN URI: BOLD:ACL6109



[Dorsal]
Thysanoptera
BIN URI: BOLD:ACC3563