

School Malaise Trap Program

Species Image Library

The images of the species collected in your Malaise trap are shown below. A single representative for each species was selected to be photographed; in some cases, only a damaged specimen was available.

Re-render images: per row

300 Records Per Page - Pages: 1



[Dorsal]
Erigone aletris
BIN URI: BOLD:AAD1746



[Dorsal]
Hypselistes florens
BIN URI: BOLD:AAB4233



[Dorsal]
Praestigia kulczynskii
BIN URI: BOLD:AAI7809



[Dorsal]
Parasitidae
BIN URI: BOLD:AAI6627



[Dorsal]
Phalangium opilio
BIN URI: BOLD:AAI4346



[Dorsal]
Anystidae
BIN URI: BOLD:ABW2639

IMAGE NOT AVAILABLE

Bdelliidae
BIN URI: BOLD:ACP7161

IMAGE NOT AVAILABLE

Trombidiformes
BIN URI: BOLD:ACP8568



[Lateral]
Entomobrya
BIN URI: BOLD:ACL6239



[Dorsal]
Bembidion yukonum
BIN URI: BOLD:AAP7868



[Dorsal]
Sericoda quadripunctata
BIN URI: BOLD:AAH2829



[Lateral]
Phyllotreta striolata
BIN URI: BOLD:AAP7016



[Dorsal]
Psylliodes cucullata
BIN URI: BOLD:ABX3225



[Dorsal]
Coccinella septempunctata
BIN URI: BOLD:AAA8933



[Dorsal]
Corylophidae
BIN URI: BOLD:ACP9236



[Dorsal]
Cartodere constricta
BIN URI: BOLD:ABA9076



[Dorsal]
Corticarina
BIN URI: BOLD:AAH0256



[Lateral]
Corticarina
BIN URI: BOLD:ACD4236



[Dorsal]
Corticinara gibbosa
BIN URI: BOLD:AAI8935



[Lateral]
Latridiidae
BIN URI: BOLD:ACP7962



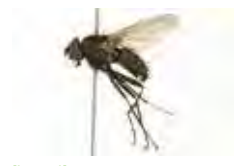
[Dorsal]
Cyphon
BIN URI: BOLD:AAU7169



[Lateral]
Forficula auricularia-B
BIN URI: BOLD:AAE0456



[Lateral]
Anthomyiidae
BIN URI: BOLD:ACE3220



[Lateral]
Anthomyiidae
BIN URI: BOLD:AAG2460



[Lateral]
Pegomya winthemi
BIN URI: BOLD:ABA6845



[Lateral]
Anthomyiidae
BIN URI: BOLD:AAG2451



[Lateral]
Anthomyiidae
BIN URI: BOLD:AAG2452



[Lateral]
Bibionidae
BIN URI: BOLD:ABV0350



[Lateral]
Calliphora vicina
BIN URI: BOLD:AAB6579



[Lateral]
Cecidomyiidae
BIN URI: BOLD:AAH2876



[Dorsal]
Cecidomyiidae
BIN URI: BOLD:AAP9022



[Lateral]
Cecidomyiidae
BIN URI: BOLD:ABV0473



[Lateral]
Ceratopogonidae
BIN URI: BOLD:AAG6433



[Lateral]
Chironomidae
BIN URI: BOLD:ACG3299



[Dorsal]
Chironomidae
BIN URI: BOLD:ACP4736



[Lateral]
Chironomidae
BIN URI: BOLD:AAN5342



[Lateral]
Chironomidae
BIN URI: BOLD:ACC6142



[Lateral]
Eriobolus nana
BIN URI: BOLD:AAH4175



[Lateral]
Drosophila sp. TAW3
BIN URI: BOLD:AAG8495



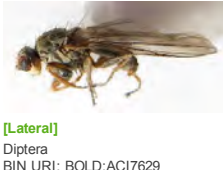
[Lateral]
Ephyridae
BIN URI: BOLD:AAG2744



[Lateral]
Suillia loewi
BIN URI: BOLD:AAG0470



[Lateral]
Heleomyzidae
BIN URI: BOLD:AAE1978



[Lateral]
Diptera
BIN URI: BOLD:ACI7629



[Lateral]
Lauxaniidae
BIN URI: BOLD:AAP6482



[Lateral]
Limoniidae
BIN URI: BOLD:ACP3905



[Lateral]
Lisopcephala alma
BIN URI: BOLD:AAE3275



[Lateral]
Boletina takagii
BIN URI: BOLD:ABA3065



[Lateral]
Exechia
BIN URI: BOLD:ACD9501



[Lateral]
Mycetophilidae
BIN URI: BOLD:AAG4898



[Lateral]
Mycetophilidae
BIN URI: BOLD:AAG4937



[Lateral]
Mycetophilidae
BIN URI: BOLD:AAP8161



[Lateral]
Mycetophilidae
BIN URI: BOLD:ABV9018



[Lateral]
Phoridae
BIN URI: BOLD:AAU8534



[Lateral]
Phoridae
BIN URI: BOLD:ACB6729



[Lateral]
Phoridae
BIN URI: BOLD:ABX8608



[Lateral]
Phoridae
BIN URI: BOLD:AAG3255



[Lateral]
Sciaridae
BIN URI: BOLD:ACD3588



[Lateral]
Scatopsciara
BIN URI: BOLD:AAH3920



[Lateral]
Sciaridae
BIN URI: BOLD:AAP9903



[Lateral]
Sciaridae
BIN URI: BOLD:ABV1201



[Lateral]
Sciaridae
BIN URI: BOLD:ACG5028



[Lateral]
Diptera
BIN URI: BOLD:ACJ3446



[Lateral]
Sciaridae
BIN URI: BOLD:AAL7869



[Lateral]
Tachinidae
BIN URI: BOLD:AAG2175



[Dorsal]
Anthocoris musculus
BIN URI: BOLD:AAF9945



[Lateral]
Callipterinella
BIN URI: BOLD:ACB2802



[Lateral]
Cryptomyzus galeopsidis
BIN URI: BOLD:ABX5354



[Lateral]
Nearctaphis bakeri
BIN URI: BOLD:AAD0902



[Lateral]
Nearctaphis sensoriata
BIN URI: BOLD:AAG3602



[Dorsal]
Rhopalosiphum padi
BIN URI: BOLD:AAA9899



[Dorsal]
Calaphidinae
BIN URI: BOLD:AAI3919



[Lateral]
Amblysellus dorsti
BIN URI: BOLD:ACD9105



[Lateral]
Colladonus eburatus
BIN URI: BOLD:ABA5819



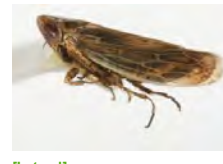
[Lateral]
Empoasca
BIN URI: BOLD:AAG8850



[Dorsal]
Empoasca
BIN URI: BOLD:AAy6736



[Lateral]
Macrosteles quadrilineatus
BIN URI: BOLD:AAA9422



[Lateral]
Psammotettix lividellus
BIN URI: BOLD:AAG8681



[Dorsal]
Cicadellidae
BIN URI: BOLD:ACP8819



[Dorsal]
Deraeocoris brevis
BIN URI: BOLD:AA8281



[Dorsal]
Lygus lineolaris
BIN URI: BOLD:AAA5803



[Dorsal]
Lygus plagiatus
BIN URI: BOLD:ACF4388



[Lateral]
Lygus borealis
BIN URI: BOLD:ACF1336



[Lateral]
Nabis americanoferus
BIN URI: BOLD:AA8143



[Lateral]
Psyllidae
BIN URI: BOLD:ABW7690



[Lateral]
Aphytis
BIN URI: BOLD:ABW3280



[Lateral]
Hymenoptera
BIN URI: BOLD:AAU9131



[Lateral]
Aphidinae
BIN URI: BOLD:AAA4188



[Lateral]
Dinotrema jft01
BIN URI: BOLD:AAA7636



[Lateral]
Hymenoptera
BIN URI: BOLD:AAG1421



[Lateral]
Braconidae
BIN URI: BOLD:AAU9101



[Lateral]
Hymenoptera
BIN URI: BOLD:AAU8584



[Lateral]
Hymenoptera
BIN URI: BOLD:ACC8969



[Lateral]
Diapriidae
BIN URI: BOLD:ACK2397



[Lateral]
Diapriidae
BIN URI: BOLD:ACB1614



[Dorsal]
Encyrtidae
BIN URI: BOLD:ACP9621



[Lateral]
Eulophidae
BIN URI: BOLD:ABX9553



[Lateral]
Alloxysta
BIN URI: BOLD:ACI6288



[Lateral]
Figitidae
BIN URI: BOLD:ACP8586



[Lateral]
Figitidae
BIN URI: BOLD:AA8134



[Lateral]
Hymenoptera
BIN URI: BOLD:AAU9319



[Lateral]
Lissonota coracina
BIN URI: BOLD:AAG7794



[Lateral]
Hymenoptera
BIN URI: BOLD:AAU8441



[Lateral]
Orthocentrus
BIN URI: BOLD:AAI3459



[Lateral]
Polysphincta
BIN URI: BOLD:ACP8154



[Lateral]
Stenomacrus
BIN URI: BOLD:ACE4848



[Lateral]
Orthocentrinae
BIN URI: BOLD:AAH1571



[Lateral]
Hymenoptera
BIN URI: BOLD:AAP6689



[Lateral]
Zaglyptus varipes
BIN URI: BOLD:AAG0382



[Lateral]
Ichneumonidae
BIN URI: BOLD:AA87726



[Lateral]
Cryptinae
BIN URI: BOLD:ACP8665



[Lateral]
Ichneumonidae
BIN URI: BOLD:AAU8990



[Lateral]
Ichneumonidae
BIN URI: BOLD:ACI5367



[Lateral]
Hymenoptera
BIN URI: BOLD:AAH7283



[Lateral]
Ichneumonidae
BIN URI: BOLD:ACF9659



[Lateral]
Megaspilidae
BIN URI: BOLD:ACP9464



[Dorsal]
Megaspilidae
BIN URI: BOLD:ACF8462



[Lateral]
Megaspilidae
BIN URI: BOLD:ACJ4849



[Dorsal]
Anagrus
BIN URI: BOLD:ACP9160



[Lateral]
Octonus notatus
BIN URI: BOLD:ABA3660



[Lateral]
Telenomus
BIN URI: BOLD:AAU4881



[Lateral]
Platygasteridae
BIN URI: BOLD:ACP7994



[Lateral]
Platygasteridae
BIN URI: BOLD:ACD1768



[Lateral]
Scellioninae
BIN URI: BOLD:ACP8198



[Lateral]
Platygasteridae
BIN URI: BOLD:AAU8342



[Lateral]
Hymenoptera
BIN URI: BOLD:ACC7623



[Lateral]
Telenomus
BIN URI: BOLD:AAU9340



[Lateral]
Proctotrupidae
BIN URI: BOLD:AAG7970



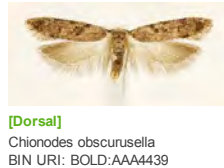
[Lateral]
Proctotrupidae
BIN URI: BOLD:AAG7971



[Lateral]
Hymenoptera
BIN URI: BOLD:ACI8854



[Lateral]
Vespa pennsylvanica
BIN URI: BOLD:AAG8042



[Dorsal]
Chionodes obscurusella
BIN URI: BOLD:AAA4439



[Dorsal]
Plutella xylostella
BIN URI: BOLD:AAA1513



[Dorsal]
Epinotia radicana
BIN URI: BOLD:AAA9458



[Lateral]
Meleoma emuncta
BIN URI: BOLD:AAG2019



[Lateral]
Psocoptera
BIN URI: BOLD:AAF1729



[Lateral]
Anaphothrips obscurus
BIN URI: BOLD:AAQ0558