

School Malaise Trap Program

Species Image Library

The images of the species collected in your Malaise trap are shown below. A single representative for each species was selected to be photographed; in some cases, only a damaged specimen was available.

Re-render images: per row

300 Records Per Page - Pages: 1



[Dorsal]
Cheiracanthium mildei
BIN URI: BOLD:AAB7601



[Dorsal]
Erigone autumnalis
BIN URI: BOLD:AAH0001



[Lateral]
Collembola
BIN URI: BOLD:ABA7343



[Lateral]
Collembola
BIN URI: BOLD:ACE8589



[Lateral]
Deroceras reticulatum
BIN URI: BOLD:AAI9663



[Dorsal]
Coleomegilla maculata lengi
BIN URI: BOLD:AAD7604



[Dorsal]
Sitona hispidulus
BIN URI: BOLD:AAH0130



[Dorsal]
Corticarina
BIN URI: BOLD:AAH0256



[Dorsal]
Trixagus chevrolati
BIN URI: BOLD:ACF8583



[Lateral]
Diptera
BIN URI: BOLD:AAA3453



[Lateral]
Anthomyiidae
BIN URI: BOLD:AAH5497



[Lateral]
Cynomya cadaverina
BIN URI: BOLD:AAB0868



[Dorsal]
Cecidomyiidae
BIN URI: BOLD:AAP9022



[Lateral]
Cecidomyiidae
BIN URI: BOLD:AAH5178



[Lateral]
Cecidomyiidae
BIN URI: BOLD:AAM6043



[Lateral]
Cecidomyiidae
BIN URI: BOLD:AAH5268



[Lateral]
Cecidomyiidae
BIN URI: BOLD:AAH5219



[Lateral]
Ceratopogonidae
BIN URI: BOLD:AAH5148



[Lateral]
Chamaemyiidae
BIN URI: BOLD:AAG6951



[Lateral]
Chironomus cf. decorus
BIN URI: BOLD:AAB7030



[Lateral]
Cricotopus
BIN URI: BOLD:AAH5318



[Lateral]
Cricotopus sp. 18ES
BIN URI: BOLD:AAG0996



[Lateral]
Cricotopus annulator cplx
BIN URI: BOLD:ABY9141



[Lateral]
Dicrotendipes
BIN URI: BOLD:ABV9027



[Lateral]
Heterotrissocladius
BIN URI: BOLD:AAH0836



[Lateral]
Chironomidae
BIN URI: BOLD:AAH5369



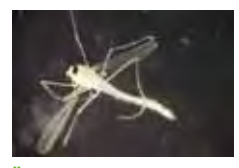
[Lateral]
Microspectra subletteorum
BIN URI: BOLD:AAF7088



[Lateral]
Orthocladius sp. TE13
BIN URI: BOLD:AAC0069



[Dorsal]
Paracladopelma winnelli
BIN URI: BOLD:AAK4963



[Dorsal]
Paratanytarsus
BIN URI: BOLD:AAV6213



[Lateral]
Chironomidae
BIN URI: BOLD:ACC4669



[Lateral]
Chironomidae
BIN URI: BOLD:ACP6694



[Lateral]
Chironomidae
BIN URI: BOLD:ACI3270



[Lateral]
Chironomidae
BIN URI: BOLD:ABV9028



[Lateral]
Oscinella sp. 4
BIN URI: BOLD:ABZ3875



[Lateral]
Thaumatomyia glabra
BIN URI: BOLD:AAH4135



[Lateral]
Dolichopodidae
BIN URI: BOLD:AAV3887



[Lateral]
Dolichopodidae
BIN URI: BOLD:AAG9713



[Lateral]
Heleomyzidae
BIN URI: BOLD:AAE1978



[Lateral]
Lonchoptera
BIN URI: BOLD:AAG9974



[Lateral]
Coenosia tigrina
BIN URI: BOLD:AAB5609



[Lateral]
Schoenomyza
BIN URI: BOLD:AAG1777



[Lateral]
Muscidae
BIN URI: BOLD:AAG1715



[Lateral]
Phoridae
BIN URI: BOLD:AAG3248



[Lateral]
Phoridae
BIN URI: BOLD:ABU5529



[Lateral]
Phoridae
BIN URI: BOLD:AAM9355



[Lateral]
Boettcheria cimbicis
BIN URI: BOLD:AAG6756



[Lateral]
Diptera
BIN URI: BOLD:AAG6743



[Lateral]
Bradysia difformis
BIN URI: BOLD:AAV1295



[Lateral]
Sciaridae
BIN URI: BOLD:AAH3914



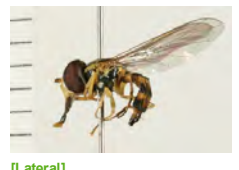
[Lateral]
Sciaridae
BIN URI: BOLD:AAH6444



[Lateral]
Syrphidae
BIN URI: BOLD:AAB2384



[Lateral]
Syrphus vitripennis
BIN URI: BOLD:AAB5577



[Lateral]
Toxomerus geminatus
BIN URI: BOLD:AAC1312



[Lateral]
Tipulidae
BIN URI: BOLD:AAF9041



[Lateral]
Acanalonia bivittata
BIN URI: BOLD:AAH8422



[Lateral]
Aleyrodidae
BIN URI: BOLD:AAZ8501



[Dorsal]
Aphis spiraeicola
BIN URI: BOLD:AAA4183



[Dorsal]
Rhopalosiphum padi
BIN URI: BOLD:AAA8999



[Lateral]
Limotettix humidus
BIN URI: BOLD:AAH8918



[Lateral]
Fieberiella florii
BIN URI: BOLD:ACJ7053



[Lateral]
Typhlocyba
BIN URI: BOLD:ABA5828



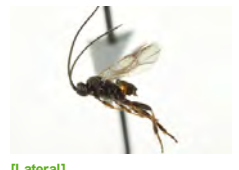
[Lateral]
Aphelinus varipes
BIN URI: BOLD:ABW3282



[adult]
Coccophaginae
BIN URI: BOLD:ABA9128



[Lateral]
Hymenoptera
BIN URI: BOLD:ACF4040



[Lateral]
Apanteles ensiger
BIN URI: BOLD:AAA3764



[Lateral]
Aphidius ervi
BIN URI: BOLD:ACI2531



[Lateral]
Aphidius rhopalosiphii
BIN URI: BOLD:AAD6802



[Lateral]
Dinotrema
BIN URI: BOLD:AAE8425



[Lateral]
Dinotrema
BIN URI: BOLD:AAU8200



[Lateral]
Microplitis kewleyi
BIN URI: BOLD:AAB8493



[Lateral]
Aphidiinae
BIN URI: BOLD:AAH7443



[Lateral]
Trioxys
BIN URI: BOLD:ABA8091



[Lateral]
Braconidae
BIN URI: BOLD:AAP6716



[Lateral]
Braconidae
BIN URI: BOLD:AAM7460



[Lateral]
Hymenoptera
BIN URI: BOLD:AAM7450



[Lateral]
Hymenoptera
BIN URI: BOLD:AAG1429



[Lateral]
Passaloecus gracilis
BIN URI: BOLD:AAN1127



[Lateral]
Hymenoptera
BIN URI: BOLD:AAP6708



[Dorsal]
Belyta validicornis
BIN URI: BOLD:AAU8736



[Lateral]
Hymenoptera
BIN URI: BOLD:ABW3248



[Lateral]
Hymenoptera
BIN URI: BOLD:ACL1491



[Lateral]
Lasius
BIN URI: BOLD:AAB9126



[Lateral]
Lasius
BIN URI: BOLD:ABY9254



[Lateral]
Lasius nearcticus
BIN URI: BOLD:AAD1528



[Lateral]
Hymenoptera
BIN URI: BOLD:AAC2392



[Dorsal]
Agapostemon virescens
BIN URI: BOLD:AAB2708



[Lateral]
Lasioglossum bruneri
BIN URI: BOLD:AAC7048



[Lateral]
Cymodusa distincta
BIN URI: BOLD:ABZ4363



[Lateral]
Hymenoptera
BIN URI: BOLD:AAD4214



[Lateral]
Lissonota coracina
BIN URI: BOLD:AAG7794



[Lateral]
Hymenoptera
BIN URI: BOLD:AAU8441



[Lateral]
Hymenoptera
BIN URI: BOLD:ABV2750



[Lateral]
Ooctonus
BIN URI: BOLD:AAY9180



[Lateral]
Mymaridae
BIN URI: BOLD:AAU8632



[Lateral]
Mymaridae
BIN URI: BOLD:ABW3127



[Dorsal]
Hymenoptera
BIN URI: BOLD:ABZ8208



[Lateral]
Synopeas
BIN URI: BOLD:AAU8605



[Lateral]
Telenomus
BIN URI: BOLD:ACP9309



[Lateral]
Hymenoptera
BIN URI: BOLD:AAG8271



[Lateral]
Platygasteridae
BIN URI: BOLD:AAU8342



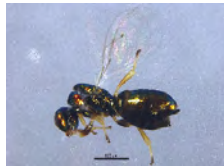
[Lateral]
Scelioninae
BIN URI: BOLD:ACL1176



[Lateral]
Platygasteridae
BIN URI: BOLD:ABW3192



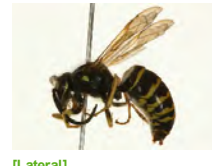
[Lateral]
Scelioninae
BIN URI: BOLD:ACP8190



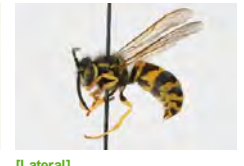
[Lateral]
Pteromalidae
BIN URI: BOLD:ACP9122



[Dorsal]
Metalius lanceolatus
BIN URI: BOLD:AAP1085



[Lateral]
Dolichovespula arenaria
BIN URI: BOLD:ACE9710



[Lateral]
Vespa maculifrons
BIN URI: BOLD:AAD5593



[Dorsal]
Synpocma palplineella
BIN URI: BOLD:AAC8881



[Lateral]
Micromus
BIN URI: BOLD:AAG0893



[Lateral]
Psocoptera
BIN URI: BOLD:AAN8447



[Lateral]
Psocoptera
BIN URI: BOLD:ABA6163



[Lateral]
Valenzuela
BIN URI: BOLD:AAP2603



[Dorsal]
Psocoptera
BIN URI: BOLD:AAM8931

