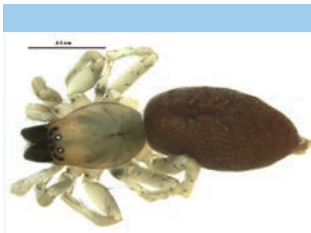


# School Malaise Trap Program

## Species Image Library

The images of the species collected in your Malaise trap are shown below. A single representative from each species was selected to be photographed; in some cases, only a damaged specimen was available.



[Dorsal]  
*Clubiona pallidula*  
BIN URI: BOLD:AAI4087



[dorsolateral view]  
*Salticus scenicus*  
BIN URI: BOLD:AAC9044



[Lateral]  
*Entomobrya unostrigata*  
BIN URI: BOLD:AAH6630



[Lateral]  
*Brachystomella parvula*  
BIN URI: BOLD:AAO1736



[Dorsal]  
*Agriotes lineatus*  
BIN URI: BOLD:AAL6108



[Dorsal]  
*Amischa decipiens*  
BIN URI: BOLD:ABA6362



[Dorsal]  
*Cartodere bifasciata*  
BIN URI: BOLD:AAW4095



[Dorsal]  
*Coccinella septempunctata*  
BIN URI: BOLD:AAA8933



[Dorsal]  
*Cryptophagus*  
BIN URI: BOLD:ABA9954



[Lateral]  
Curculioninae  
BIN URI: BOLD:AAO0328



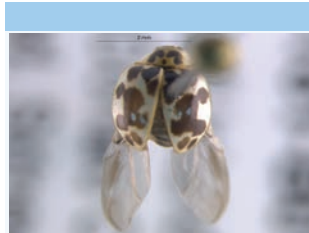
[Dorsal]  
*Cyphon variabilis*  
BIN URI: BOLD:ACX4619



[Dorsal]  
Coccinellidae  
BIN URI: BOLD:AAB5640



[Dorsal]  
*Cartodere nodifer*  
BIN URI: BOLD:AAO0516



[Dorsal]  
*Psyllobora vigintimaculata*  
BIN URI: BOLD:ACN4256



[Lateral]  
Staphylinidae  
BIN URI: BOLD:ACX9078



[Dorsal]  
*Tachyporus atriceps*  
BIN URI: BOLD:ACL8080



[Dorsal]  
*Trixagus chevrolati*  
BIN URI: BOLD:ACF8582



[Lateral]  
*Bradysia atroparva*  
BIN URI: BOLD:AAM9243



[Lateral]  
Sciaridae  
BIN URI: BOLD:ACR4350



[Lateral]  
*Bryophaenocladus* sp. 8ES  
BIN URI: BOLD:AAG1021



[Lateral]  
Cecidomyiidae  
BIN URI: BOLD:ACI6764



[Lateral]  
Cecidomyiidae  
BIN URI: BOLD:AAG6460



[Lateral]  
Cecidomyiidae  
BIN URI: BOLD:AAN5269



[Lateral]  
Cecidomyiidae  
BIN URI: BOLD:AAN5205



[Lateral]  
Cecidomyiidae  
BIN URI: BOLD:AAM6047



[Lateral]  
Chironominae  
BIN URI: BOLD:ACG8911



[Lateral]  
*Chironomus matus*  
BIN URI: BOLD:AAB4657



[Lateral]  
*Coenosia tigrina*  
BIN URI: BOLD:AAB5609



[Lateral]  
Sciaridae  
BIN URI: BOLD:AAN6447



[Lateral]  
Ceratopogonidae  
BIN URI: BOLD:AAN5169



[Lateral]  
Anthomyiidae  
BIN URI: BOLD:AAG2465



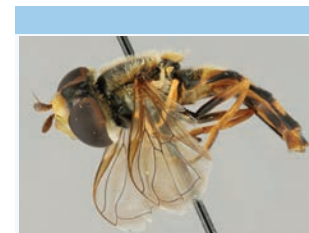
[Lateral]  
*Dicrotendipes*  
BIN URI: BOLD:AAN5383



[Lateral]  
*Drosophila*  
BIN URI: BOLD:AAG8493



[Lateral]  
*Eupeodes*  
BIN URI: BOLD:AAB2384



[Lateral]  
*Eupeodes latifasciatus*  
BIN URI: BOLD:ACY1719



[Lateral]  
*Helina depuncta*  
BIN URI: BOLD:AAG1711



[Lateral]  
*Limonia nubeculosa*  
BIN URI: BOLD:AAI1355



[Lateral]  
Limosiniinae  
BIN URI: BOLD:ACG0715



[Lateral]  
*Lycoriella*  
BIN URI: BOLD:ABA1215



[Lateral]  
*Lycoriella*  
BIN URI: BOLD:ACP3565



[Lateral]  
*Medetera* sp. SEB5  
BIN URI: BOLD:ACA1124



[Lateral]  
*Microtendipes pedellus* grp.  
BIN URI: BOLD:AAM6248



[Lateral]  
*Phaenopsectra*  
BIN URI: BOLD:ABX4067



[Lateral]  
*Philygria*  
BIN URI: BOLD:AAG2740



[Lateral]  
*Psychoda*  
BIN URI: BOLD:AAF9306



[Lateral]  
Scatopsidae  
BIN URI: BOLD:AAN8523



[Lateral]  
Sciaridae  
BIN URI: BOLD:AAN6453



[Lateral]  
Sciaridae  
BIN URI: BOLD:ACB9102



[Lateral]  
Sciaridae  
BIN URI: BOLD:ACP3959



[Lateral]  
Sciaridae  
BIN URI: BOLD:ABX0976



[Lateral]  
Sciaridae  
BIN URI: BOLD:ACP7943



[Lateral]  
Sciaridae  
BIN URI: BOLD:ACX4616



[Lateral]  
Chironomidae  
BIN URI: BOLD:AAG1019



[Lateral]  
*Sphaerophoria*  
BIN URI: BOLD:AAA7374



[Lateral]  
*Tanytarsus*  
BIN URI: BOLD:ACG3947



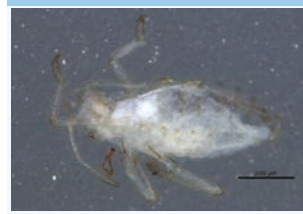
[Lateral]  
*Thaumatomyia*  
BIN URI: BOLD:AAH4135



[Lateral]  
Tipulidae  
BIN URI: BOLD:AAF9041



[Dorsal]  
*Acyrthosiphon lactucae*  
BIN URI: BOLD:AAE2198



[Lateral]  
*Anoecia fulviabdominalis*  
BIN URI: BOLD:AAH2871



[Dorsal]  
Aphis  
BIN URI: BOLD:AAA3070



[Dorsal]  
Aphididae  
BIN URI: BOLD:AAC1165



[Dorsal]  
Cicadellidae  
BIN URI: BOLD:ACP7727



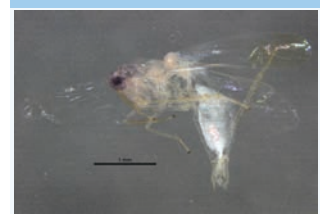
[Dorsal]  
Hemiptera  
BIN URI: BOLD:AAO8340



[Dorsal]  
*Eupteryx decemnotata*  
BIN URI: BOLD:ACD6850



[Lateral]  
*Eupteryx decemnotata*  
BIN URI: BOLD:ACN3029



[Lateral]  
*Empoasca*  
BIN URI: BOLD:AAN8406



[Lateral]  
*Fagocyba douglasi*  
BIN URI: BOLD:ABW2937



[Dorsal]  
*Prociphilus americanus*  
BIN URI: BOLD:AAD3097



[Lateral]  
*Rhopalosiphum nymphaeae*  
BIN URI: BOLD:AAE3554



[Lateral]  
*Typhlocyba*  
BIN URI: BOLD:ABA5828



[Dorsal]  
*Uroleucon*  
BIN URI: BOLD:AAC5580



[Lateral]  
*Alloxysta*  
BIN URI: BOLD:AAU8458



[Lateral]  
*Anagrus*  
BIN URI: BOLD:AAN9413



[Lateral]  
*Aphidius*  
BIN URI: BOLD:AAD6802



[Lateral]  
*Blacus stelfoxi*  
BIN URI: BOLD:AAZ9744



[Lateral]  
*Meteorus*  
BIN URI: BOLD:AAG1405



[Lateral]  
Diapriidae  
BIN URI: BOLD:ACJ5673



[Lateral]  
*Dinotrema*  
BIN URI: BOLD:AAU8379



[Lateral]  
*Dinotrema*  
BIN URI: BOLD:ACP4606



[Lateral]  
Eulophidae  
BIN URI: BOLD:ACX8089



[Lateral]  
Euphorinae  
BIN URI: BOLD:AAG6197



[Lateral]  
*Gonatocerus*  
BIN URI: BOLD:AAG1488



[Lateral]  
*Lasioglossum argemonis*  
BIN URI: BOLD:AAD9282



[Lateral]  
*Megachile perihirta*  
BIN URI: BOLD:ABZ7961



[Lateral]  
Megaspilidae



[Lateral]  
Mymaridae



[Lateral]  
Platygastriidae



[Lateral]  
Hymenoptera



[Lateral]  
Pronotalia



[Lateral]  
Platygastriidae

BIN URI: BOLD:ACP2559



[Dorsal]

Telenomus  
BIN URI: BOLD:AAU9437

BIN URI: BOLD:ACN6494



[Lateral]

Telenomus  
BIN URI: BOLD:ABA6265

BIN URI: BOLD:AAZ4458



[Lateral]

Platygastridae  
BIN URI: BOLD:AAU9340

BIN URI: BOLD:ABY2638



[Lateral]

Telenomus  
BIN URI: BOLD:ACB2763

BIN URI: BOLD:ACX8183



[Dorsal]

Telenomus  
BIN URI: BOLD:ACX2711

BIN URI: BOLD:ACC5761



[Dorsal]

Agonopterix nervosa  
BIN URI: BOLD:AAC1846



[Dorsal]

Crambus praefectellus  
BIN URI: BOLD:AAA3654



[Dorsal]

Syncopacma  
BIN URI: BOLD:AAF9988



[Dorsal]

Macrosaccus robinella  
BIN URI: BOLD:AAC4327



[Dorsal]

Neocalcis californiaria  
BIN URI: BOLD:ABZ2954



[Dorsal]

Cerobasis guestfalica  
BIN URI: BOLD:ACX5665



[Lateral]

Psocoptera  
BIN URI: BOLD:AAV6680



[Lateral]

Psocoptera  
BIN URI: BOLD:AAV8452



[Lateral]

Psocoptera  
BIN URI: BOLD:ACB0984