

School Malaise Trap Program

Species Image Library

The images of the species collected in your Malaise trap are shown below. A single representative for each species was selected to be photographed; in some cases, only a damaged specimen was available.

Re-render images: per row

300 Records Per Page - Pages: 1



[Dorsal]
Agelenopsis potteri
BIN URI: BOLD: AAB5726



[Dorsal]
Eustala anastera
BIN URI: BOLD: AAB7933



[Dorsal]
Clubiona obesa
BIN URI: BOLD: AAD5417



[Dorsal]
Clubiona pygmaea
BIN URI: BOLD: ACB9565



[Dorsal]
Elaver excepta
BIN URI: BOLD: AAI4088



[Lateral]
Ceratinopsis nigriceps
BIN URI: BOLD: AAK0809



[Lateral]
Erigone atra
BIN URI: BOLD: ACE8336



[Lateral]
Pityohyphantes costatus
BIN URI: BOLD: AAC6457



[Dorsal]
Gladicosa gulosa
BIN URI: BOLD: AAH0053



[Lateral]
Philodromus cespitum
BIN URI: BOLD: AAB3836



[Dorsal]
Philodromus rufus vibrans
BIN URI: BOLD: AAB2768



[Dorsal]
Tetragnatha viridis
BIN URI: BOLD: AAG5659



[Dorsal]
Phytoseiidae
BIN URI: BOLD: ACP9159



[Dorsal]
Mesostigmata
BIN URI: BOLD: ACI5481



[Lateral]
Leiobunum aldrichi
BIN URI: BOLD: AAH7061



[Dorsal]
Scheloribatidae
BIN URI: BOLD: ACP9538



[Dorsal]
Anystidae
BIN URI: BOLD: ACO3990



[Dorsal]
Abrolophus
BIN URI: BOLD: AAN6614



[Dorsal]
Erythraeidae
BIN URI: BOLD: ACP8267



[Dorsal]
Lepidocyrtus
BIN URI: BOLD: ACM2009



[Dorsal]
Sericoderus lateralis
BIN URI: BOLD: ABA2914



[Dorsal]
Orchesia cultriformis
BIN URI: BOLD: AAP7011



[Dorsal]
Glischrochilus sanguinolentus
BIN URI: BOLD: AAP8585



[Lateral]
Ptinidae
BIN URI: BOLD: ACF6515



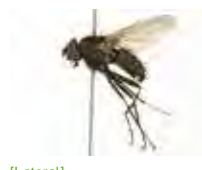
[Lateral]
Staphylinidae
BIN URI: BOLD: AAN6146



[Lateral]
Sylvicola fenestralis
BIN URI: BOLD: AAG1996



[Lateral]
Anthomyiidae
BIN URI: BOLD: AAG1708



[Lateral]
Anthomyiidae
BIN URI: BOLD: AAG2460



[Dorsal]
Bibionidae
BIN URI: BOLD: AAN5137



[Dorsal]
Penthetria
BIN URI: BOLD: ACP9134



[Lateral]
Calliphoridae
BIN URI: BOLD:AAG6746



[Lateral]
Pollenia labialis
BIN URI: BOLD:AAI2765



[Lateral]
Diptera
BIN URI: BOLD:AAG6745



[Lateral]
Pollenia rudis
BIN URI: BOLD:AAH3035



[Lateral]
Cecidomyiidae
BIN URI: BOLD:AAH3756



[Lateral]
Cecidomyiidae
BIN URI: BOLD:ACK5696



[Lateral]
Cecidomyiidae
BIN URI: BOLD:ACB3033



[Lateral]
Cecidomyiidae
BIN URI: BOLD:ABV0504



[Lateral]
Cecidomyiidae
BIN URI: BOLD:AAH3779



[Lateral]
Cecidomyiidae
BIN URI: BOLD:ACB1265



[Lateral]
Ceratopogonidae
BIN URI: BOLD:AAZ5591



[Lateral]
Chironomidae
BIN URI: BOLD:ABU5525



[Lateral]
Paraphaenocladus impensus
BIN URI: BOLD:AAC4197



[Lateral]
Phanopsectra
BIN URI: BOLD:AAU8998



[Lateral]
Polypedium
BIN URI: BOLD:ACA3244



[Lateral]
Chironomidae
BIN URI: BOLD:ACJ3722



[Lateral]
Chironomidae
BIN URI: BOLD:AAQ0611



[Lateral]
Chironomidae
BIN URI: BOLD:ACP9773



[Lateral]
Chironomidae
BIN URI: BOLD:ACJ6550



[Lateral]
Chironomidae
BIN URI: BOLD:AAO7623



[Lateral]
Chironomidae
BIN URI: BOLD:ACC7822



[Lateral]
Tricimba melancholica
BIN URI: BOLD:AAG1503



[Lateral]
Culicidae
BIN URI: BOLD:AAE3210



[Lateral]
Drosophila neotestacea
BIN URI: BOLD:AAC7070



[Lateral]
Fanniidae
BIN URI: BOLD:AAG4620



[Lateral]
Dicranomyia frontalis
BIN URI: BOLD:ABA5203



[Lateral]
Discobola annulata
BIN URI: BOLD:AAF4967



[Lateral]
Tipulidae
BIN URI: BOLD:AAU6544



[Lateral]
Muscidae
BIN URI: BOLD:AAG1780



[Lateral]
Muscidae
BIN URI: BOLD:AAC8885



[Lateral]
Muscidae
BIN URI: BOLD:AAG1711



[Lateral]
Muscidae
BIN URI: BOLD:AAG1710



[Lateral]
Mesembrina latreillii
BIN URI: BOLD:AAG1700



[Lateral]
Muscina pascuorum
BIN URI: BOLD:AAG1714



[Lateral]
Muscina levida
BIN URI: BOLD:AAE8817



[Lateral]
Mydaea occidentalis
BIN URI: BOLD:ABA6843



[Lateral]
Phaonia
BIN URI: BOLD:AAG1699



[Lateral]
Thricops diaphanus
BIN URI: BOLD:AAG1710



[Lateral]
Muscidae
BIN URI: BOLD:AAG1769



[Lateral]
Muscidae
BIN URI: BOLD:ABA6844



[Lateral]
Mycetophilidae
BIN URI: BOLD:ABU5545



[Lateral]
Exechia sp. CJB6
BIN URI: BOLD:AAG4880



[Lateral]
Mycetophila alea
BIN URI: BOLD:AAG4931



[Dorsal]
Mycetophilidae
BIN URI: BOLD:AAM8968



[Lateral]
Phoridae
BIN URI: BOLD:AAZ6701



[Lateral]
Phoridae
BIN URI: BOLD:AAN8679



[Lateral]
Phoridae
BIN URI: BOLD:ACD1175



[Lateral]
Psychodidae
BIN URI: BOLD:AAP4581



[Lateral]
Psychodidae
BIN URI: BOLD:ABV1314



[Lateral]
Diptera
BIN URI: BOLD:AAG6743



[Lateral]
Bradysia difformis
BIN URI: BOLD:AAV1295



[Lateral]
Sciaridae
BIN URI: BOLD:AAV1366



[Lateral]
Sciaridae
BIN URI: BOLD:AAH3939



[Lateral]
Ctenosciara hyalipennis
BIN URI: BOLD:AAH3983



[Lateral]
Sciaridae
BIN URI: BOLD:ABA1231



[Lateral]
Scatopsiara
BIN URI: BOLD:ACF4135



[Lateral]
Sciaridae
BIN URI: BOLD:AAH3947



[Lateral]
Sciaridae
BIN URI: BOLD:ABU5521



[Lateral]
Sciaridae
BIN URI: BOLD:AAH3918



[Lateral]
Sciaridae
BIN URI: BOLD:AAP1210



[Lateral]
Sciaridae
BIN URI: BOLD:AAN6446



[Lateral]
Sciaridae
BIN URI: BOLD:ABA6511



[Lateral]
Sciaridae
BIN URI: BOLD:AAN6445



[Lateral]
Toxomerus geminatus
BIN URI: BOLD:AAC1312



[Lateral]
Essigella
BIN URI: BOLD:AAI4969



[Dorsal]
Euceraphis papyrifercicola
BIN URI: BOLD:AAH2870



[Dorsal]
Metoplophium dirhodum
BIN URI: BOLD:AAE7796



[Lateral]
Rhopalomyzus Ionicerae
BIN URI: BOLD:AAC4637



[Lateral]
Balclutha
BIN URI: BOLD:AAV6737



[Lateral]
Draeculacephala mollipes
BIN URI: BOLD:AAZ1829



[Dorsal]
Empoasca
BIN URI: BOLD:AAV0166



[Lateral]
Erythrulida
BIN URI: BOLD:AAN8287



[Lateral]
Apanteles
BIN URI: BOLD:AAC3220



[Lateral]
Asobara
BIN URI: BOLD:ACP8771



[Lateral]
Hymenoptera
BIN URI: BOLD:AAU8379



[Lateral]
Braconidae
BIN URI: BOLD:ACF7354



[Lateral]
Hymenoptera
BIN URI: BOLD:ACL5973



[Lateral]
Microplitis JFT25
BIN URI: BOLD:AAF5357



[Lateral]
Phaenocarpa
BIN URI: BOLD:AAU8636



[Lateral]
Braconidae
BIN URI: BOLD:AAG7716



[Lateral]
Braconidae
BIN URI: BOLD:ACF3870



[Dorsal]
Diapriidae
BIN URI: BOLD:ACF9546



[Lateral]
Diapriidae
BIN URI: BOLD:AAU8803



[Lateral]
Diapriidae
BIN URI: BOLD:AAU9389



[Lateral]
Belytinae sp. MAS BIN584
BIN URI: BOLD:AAJ8191



[Lateral]
Diapriidae
BIN URI: BOLD:AAU9080



[Lateral]
Diapriidae
BIN URI: BOLD:AAP6717



[Lateral]
Diapriidae
BIN URI: BOLD:AAU8718



[Lateral]
Diapriidae
BIN URI: BOLD:ACL3171



[Lateral]
Diprion similis
BIN URI: BOLD:AAF4878



[Lateral]
Entedoninae
BIN URI: BOLD:ACL2439



[Lateral]
Eulophidae
BIN URI: BOLD:AAU8577



[Lateral]
Cynipidae sp. MAS BIN564
BIN URI: BOLD:AAR5718



[Lateral]
Hymenoptera
BIN URI: BOLD:AAC2392



[Lateral]
Myrmica punctiventris
BIN URI: BOLD:AAA1865



[Lateral]
Myrmica
BIN URI: BOLD:AAI3347



[Lateral]
Apechthis ontario
BIN URI: BOLD:AAA9338



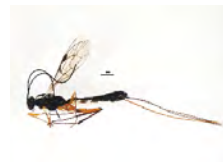
[Lateral]
Cymodusa distincta
BIN URI: BOLD:ABZ4363



[Lateral]
Hymenoptera
BIN URI: BOLD:AAO2111



[Lateral]
Leipaulus
BIN URI: BOLD:ACC8246



[Lateral]
Hymenoptera
BIN URI: BOLD:AAD8806



[Lateral]
Hymenoptera
BIN URI: BOLD:AAG7721



[Lateral]
Pimplinae
BIN URI: BOLD:AAG0387



[Lateral]
Pleolophus larvatus
BIN URI: BOLD:AAU8228



[Lateral]
Stenomacrus
BIN URI: BOLD:ACN3086



[Lateral]
Hymenoptera
BIN URI: BOLD:AAP6689



[Lateral]
Ichneumonidae
BIN URI: BOLD:AAU8234



[Lateral]
Orthocentrinae
BIN URI: BOLD:AAH2142



[Lateral]
Idris
BIN URI: BOLD:AAU9367



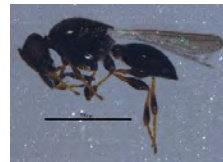
[Lateral]
Platygastriidae
BIN URI: BOLD:AAG7883



[Lateral]
Platygastriidae
BIN URI: BOLD:ACL9348



[Lateral]
Platygastriidae
BIN URI: BOLD:AAG7977



[Lateral]
Platygastriinae
BIN URI: BOLD:ACP8630



[Lateral]
Proctotrupidae
BIN URI: BOLD:AAU9562



[Lateral]
Dolichovespula arenaria
BIN URI: BOLD:ACE9710



[Lateral]
Vespa maculifrons
BIN URI: BOLD:AAD5593



[Dorsal]
Spilosoma virginica
BIN URI: BOLD:AAA3347



[Dorsal]
Aristotelia pudibundella
BIN URI: BOLD:AAJ1690



[Lateral]
Eupithecia palpata
BIN URI: BOLD:ACE8095



[Dorsal]
Macaria sanfordi
BIN URI: BOLD:AAA1486



[Dorsal]
Protoarmia porcelaria
BIN URI: BOLD:AAA2077



[Dorsal]
Agrotis ipsilon
BIN URI: BOLD:AAA3364



[Lateral]
Sunira bicolorago
BIN URI: BOLD:AAA4426



[Dorsal]
Psyche casta
BIN URI: BOLD:AAC5848



[Lateral]
Coniopterygidae
BIN URI: BOLD:ACD0353



[Lateral]
Hemerobius pinidumus
BIN URI: BOLD:AAG0964



[Dorsal]
Psocoptera
BIN URI: BOLD:AAH3229



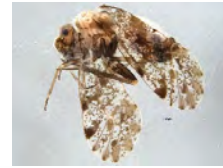
[Lateral]
Psocoptera
BIN URI: BOLD:AAN8450



[Lateral]
Psocoptera
BIN URI: BOLD:AAP4625



[Lateral]
Psocoptera
BIN URI: BOLD:AAM8930



[Lateral]
Psocoptera
BIN URI: BOLD:ACE6318



[Lateral]
Psocoptera
BIN URI: BOLD:ABA6546



[Lateral]
Psocoptera
BIN URI: BOLD:AAH3232



[Lateral]
Neureclipsis bimaculata
BIN URI: BOLD:AAE2683