

# School Malaise Trap Program

## Species Image Library

The images of the species collected in your Malaise trap are shown below. A single representative for each species was selected to be photographed; in some cases, only a damaged specimen was available.

Re-render images:  per row

300 Records Per Page - Pages: 1



[Dorsal]  
*Araniella displicata*  
BIN URI: BOLD:AAA8399



[Dorsal]  
*Clubiona obesa*  
BIN URI: BOLD:AAD5417



[Dorsal]  
*Philodromus rufus vibrans*  
BIN URI: BOLD:AAB2768



[Dorsal]  
*Tetragnatha versicolor*  
BIN URI: BOLD:AAB7995



Mesostigmata  
BIN URI: BOLD:ACP8004



[Lateral]  
*Leiobunum*  
BIN URI: BOLD:AAH7062



[Dorsal]  
Oribatulidae  
BIN URI: BOLD:AAL8123



[Lateral]  
*Abrolophus*  
BIN URI: BOLD:ACI9840



[Dorsal]  
*Lepidocyrtus*  
BIN URI: BOLD:ACM2009



[Lateral]  
Brentidae  
BIN URI: BOLD:AAH6210



[Dorsal]  
*Diabrotica barberi*  
BIN URI: BOLD:AAB5012



[Lateral]  
Coccinellinae  
BIN URI: BOLD:AAH5910



[Dorsal]  
Coccinellidae  
BIN URI: BOLD:AAB5640



[Dorsal]  
*Scymnus*  
BIN URI: BOLD:ACA7239



[Dorsal]  
Coleoptera  
BIN URI: BOLD:ABA9097



[Dorsal]  
*Cryptophagus*  
BIN URI: BOLD:ABY0110



[Lateral]  
*Corticaria*  
BIN URI: BOLD:AAH6154



[Dorsal]  
*Corticarina*  
BIN URI: BOLD:AAH0256



[Dorsal]  
*Corticinara gibbosa*  
BIN URI: BOLD:AAI8935



[Lateral]  
*Cyphon obscurus*  
BIN URI: BOLD:AAH0074



[Dorsal]  
*Cyphon laevipennis*  
BIN URI: BOLD:AAG3633



[Lateral]  
*Amischa analis*  
BIN URI: BOLD:ABA5313



[Lateral]  
Staphylinidae  
BIN URI: BOLD:ABW2870



[Lateral]  
*Tachyporus rulomus*  
BIN URI: BOLD:AAP7029



[Dorsal]  
*Atheta hansseni*  
BIN URI: BOLD:ABA6362



[Lateral]  
Staphylinidae  
BIN URI: BOLD:ABA9958



[Dorsal]  
*Trixagus*  
BIN URI: BOLD:AAU6966



[Dorsal]  
*Forficula auricularia-A*  
BIN URI: BOLD:AAG9897



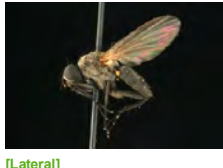
[Lateral]  
Agromyzidae  
BIN URI: BOLD:AAD1945



[Lateral]  
Anthomyiidae  
BIN URI: BOLD:AAF4234



[Lateral]  
*Pegomya geniculata*  
BIN URI: BOLD:AAG2466



[Lateral]  
Diptera  
BIN URI: BOLD:AAG2462



[Lateral]  
Anthomyiidae  
BIN URI: BOLD:ACP6334



[Lateral]  
*Angioneura ordinaria*  
BIN URI: BOLD:AAG6854



[Lateral]  
Diptera  
BIN URI: BOLD:AAA7470



[Lateral]  
Diptera  
BIN URI: BOLD:AAG6745



[Lateral]  
Chironomidae  
BIN URI: BOLD:AAL7329



[Lateral]  
*Drosophila neotestacea*  
BIN URI: BOLD:AAC7070



[Lateral]  
*Drosophila*  
BIN URI: BOLD:AAG8493



[Lateral]  
*Dryomyza anilis*  
BIN URI: BOLD:AAC6974



[Lateral]  
Heleomyzidae  
BIN URI: BOLD:AAE1978



[Lateral]  
*Limonia immatura*  
BIN URI: BOLD:AAJ2208



[Dorsal]  
Tipulidae  
BIN URI: BOLD:AAN5879



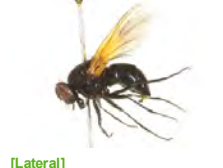
[Lateral]  
*Coenosia tigrina*  
BIN URI: BOLD:AAB5609



[Lateral]  
Muscidae  
BIN URI: BOLD:AAG1711



[Lateral]  
*Helina* sp.  
BIN URI: BOLD:AAC2498



[Lateral]  
*Mesembrina latreillii*  
BIN URI: BOLD:AAG1700



[Lateral]  
*Muscina levida*  
BIN URI: BOLD:AAB8817



[Lateral]  
*Mydaea pseudonubila*  
BIN URI: BOLD:AAE0077



[Lateral]  
*Phaonia*  
BIN URI: BOLD:AAG1699



[Lateral]  
Muscidae  
BIN URI: BOLD:ACF1299



[Lateral]  
Muscidae  
BIN URI: BOLD:AAG1709



[Lateral]  
*Tricyphona*  
BIN URI: BOLD:AAD9688



[Lateral]  
Phoridae  
BIN URI: BOLD:AAG3275



[Lateral]  
Psychodidae  
BIN URI: BOLD:AAZ5592



[Lateral]  
*Ravinia querula*  
BIN URI: BOLD:AAP7702



[Lateral]  
Scathophagidae  
BIN URI: BOLD:AAD0853



[Lateral]  
*Tetanocera* sp. 5  
BIN URI: BOLD:AAE9313



[Lateral]  
*Allograpta obliqua*  
BIN URI: BOLD:AAD8276



[Lateral]  
Tipulidae  
BIN URI: BOLD:AAF9041



[Dorsal]  
*Aphis fabae*  
BIN URI: BOLD:AAA5565



[Dorsal]  
*Ovatus*  
BIN URI: BOLD:AAI3449



[Lateral]  
*Rhopalosiphum nymphaeae*  
BIN URI: BOLD:AAE3554



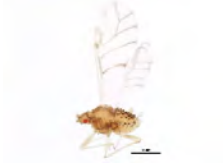
[Dorsal]  
*Rhopalosiphum padi*  
BIN URI: BOLD:AAA9899



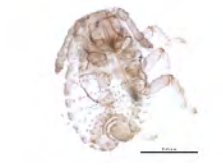
[Dorsal]  
*Rhopalosiphum oxyacanthae*  
BIN URI: BOLD:AAD1504



[Lateral]  
*Rhopalosiphum*  
BIN URI: BOLD:ABZ6546



[Lateral]  
*Therioaphis trifolii*  
BIN URI: BOLD:AAA3759



[Dorsal]  
Aphididae  
BIN URI: BOLD:ACI9822



[Lateral]  
*Philaenus spumarius*  
BIN URI: BOLD:AAB1850



[Lateral]  
*Balclutha*  
BIN URI: BOLD:AAY6737



[Dorsal]  
*Dikrella*  
BIN URI: BOLD:ABX7281



[Lateral]  
*Empoasca*  
BIN URI: BOLD:AAY6744



[Lateral]  
Empoasca  
BIN URI: BOLD:ABZ4247



[Lateral]  
Empoasca  
BIN URI: BOLD:AAG8850



[Lateral]  
Empoasca  
BIN URI: BOLD:AAN8250



[Dorsal]  
Erythroneura bakeri  
BIN URI: BOLD:AAV0161



[Dorsal]  
Erythroneura  
BIN URI: BOLD:ABA5864



[Lateral]  
Erythroneura elegans  
BIN URI: BOLD:ACL2870



[Lateral]  
Forcipata loca  
BIN URI: BOLD:ACC8165



[Lateral]  
Forcipata  
BIN URI: BOLD:ACL7402



[Lateral]  
Jikradia olitoria  
BIN URI: BOLD:ABA5861



[Lateral]  
Macrosteles quadrilineatus  
BIN URI: BOLD:AAA9422



[Lateral]  
Hemiptera  
BIN URI: BOLD:AAO4039



[Lateral]  
Scaphoideus  
BIN URI: BOLD:ABA8094



[Lateral]  
Typhlocyba pomaria  
BIN URI: BOLD:AAF5980



[Lateral]  
Typhlocyba  
BIN URI: BOLD:ABA5828



[Dorsal]  
Lygus lineolaris  
BIN URI: BOLD:AAA5803



[Lateral]  
Zelus luridus  
BIN URI: BOLD:AAG2724



[Lateral]  
Aphelinidae  
BIN URI: BOLD:ACJ8772



[Lateral]  
Aphelinidae  
BIN URI: BOLD:ACC1623



[adult]  
Centrodora  
BIN URI: BOLD:ACI7773



[Lateral]  
Aphis ervi  
BIN URI: BOLD:ACI2531



[Lateral]  
Dinotrema  
BIN URI: BOLD:ACP7589



[Lateral]  
Glyptapanteles sp.  
BIN URI: BOLD:AAA4783



[Lateral]  
Hymenoptera  
BIN URI: BOLD:AAO2112



[Lateral]  
Hymenoptera  
BIN URI: BOLD:AAU8567



[Dorsal]  
Belyta validicornis  
BIN URI: BOLD:AAU8736



[Lateral]  
Diapriidae  
BIN URI: BOLD:ABA5937



[Lateral]  
Hymenoptera  
BIN URI: BOLD:ACM1547



[Lateral]  
Hymenoptera  
BIN URI: BOLD:AAA7203



[Lateral]  
Copidosoma  
BIN URI: BOLD:ABA5947



[Lateral]  
Eulophidae  
BIN URI: BOLD:ACP7793



[Lateral]  
Hymenoptera  
BIN URI: BOLD:AAU8574



[Dorsal]  
Brachymyrmex depilis  
BIN URI: BOLD:AAD7490



[Lateral]  
Camponotus americanus  
BIN URI: BOLD:AAD4432



[Lateral]  
Formica  
BIN URI: BOLD:AAA1467



[Lateral]  
Lasius  
BIN URI: BOLD:AAB9126



[Lateral]  
Hymenoptera  
BIN URI: BOLD:AAC2392



[Lateral]  
Myrmica AF-smi  
BIN URI: BOLD:AAA1840



[Lateral]  
Myrmica americana  
BIN URI: BOLD:AAA1839



[Lateral]  
Myrmica  
BIN URI: BOLD:ABZ3538



[Lateral]  
Myrmica cf. fracticornis  
BIN URI: BOLD:AAA1863



[Lateral]  
Myrmica brevispinosa  
BIN URI: BOLD:AAB8289



[Lateral]  
Apechthis ontario  
BIN URI: BOLD:AAA9338



[Lateral]  
*Cymodusa distincta*  
BIN URI: BOLD:ABZ4363



[Lateral]  
*Diadegma* nr. *Fenestrale*  
BIN URI: BOLD:AAG7740



[Lateral]  
*Diplazon laetatorius*  
BIN URI: BOLD:AAD1879



[Lateral]  
*Ichneumon discoensis*  
BIN URI: BOLD:ACE9045



[Lateral]  
*Ichneumon memorator*  
BIN URI: BOLD:AAE2749



[Lateral]  
Ichneumonidae  
BIN URI: BOLD:AAG7683



[Adult]  
*Promethes sulcator*  
BIN URI: BOLD:AAG0369



[Lateral]  
Ichneumonidae  
BIN URI: BOLD:ABV2768



[Lateral]  
*Sussaba dorsalis*  
BIN URI: BOLD:AAU8613



[Lateral]  
*Vulgichneumon deceptor*  
BIN URI: BOLD:AAG7645



[Lateral]  
Banchinae  
BIN URI: BOLD:AAH1851



[Lateral]  
Ichneumonidae  
BIN URI: BOLD:AAU8748



[Lateral]  
*Gonatocerus morrilli*  
BIN URI: BOLD:AAU9165



[Lateral]  
*Synopeas*  
BIN URI: BOLD:AAU8605



[Lateral]  
Platygastridae  
BIN URI: BOLD:ABA6124



[Lateral]  
Hymenoptera  
BIN URI: BOLD:AAG8271



[Lateral]  
Platygastridae  
BIN URI: BOLD:AAU8717



[Lateral]  
*Telenomus*  
BIN URI: BOLD:AAU9439



[Lateral]  
Scelioninae  
BIN URI: BOLD:ACI9021



[Lateral]  
Hymenoptera  
BIN URI: BOLD:AAU8216



[Lateral]  
*Polistes dominula*  
BIN URI: BOLD:AAU8216



[Lateral]  
*Vespa germanica*  
BIN URI: BOLD:AAG9055



[Lateral]  
*Vespa maculifrons*  
BIN URI: BOLD:AAD5593



[Lateral]  
*Halysidota tessellaris*  
BIN URI: BOLD:AAA3425



[Dorsal]  
*Helcystogramma hystericella*  
BIN URI: BOLD:AAE7016



[Dorsal]  
*Epiglaea decliva*  
BIN URI: BOLD:AAU7020



[Lateral]  
*Sunira bicolorago*  
BIN URI: BOLD:AAA4426



[Dorsal]  
*Epinotia lindana*  
BIN URI: BOLD:AAU81659



[Dorsal]  
*Pandemis limitata*  
BIN URI: BOLD:AAA3659



[Lateral]  
*Melanoptus*  
BIN URI: BOLD:AAA4555



[Lateral]  
*Tettigidea lateralis*  
BIN URI: BOLD:AAO8100



[Dorsal]  
Psocoptera  
BIN URI: BOLD:AAH3229



[Lateral]  
Psocoptera  
BIN URI: BOLD:AAU8447



[Lateral]  
Psocoptera  
BIN URI: BOLD:AAF1729



[Lateral]  
Psocoptera  
BIN URI: BOLD:AAU8450



[Lateral]  
Psocoptera  
BIN URI: BOLD:AAH3225



[Lateral]  
Psocoptera  
BIN URI: BOLD:ACA2933



[Lateral]  
Psocoptera  
BIN URI: BOLD:ACE6318



[Lateral]  
Psocoptera  
BIN URI: BOLD:ABA6550



[Lateral]  
Psocoptera  
BIN URI: BOLD:AAM8930

