

School Malaise Trap Program

Species Image Library

The images of the species collected in your Malaise trap are shown below. A single representative for each species was selected to be photographed; in some cases, only a damaged specimen was available.

Re-render images: per row

300 Records Per Page - Pages: 1



[Dorsal]
Agelenopsis potteri
BIN URI: BOLD: AAB5726



[Dorsal]
Clubiona abboti
BIN URI: BOLD: AAD1564



[Dorsal]
Emblyna hentzi
BIN URI: BOLD: AAI6251



[Dorsal]
Cheiracanthium mildeii
BIN URI: BOLD: AAB7601



[Dorsal]
Walckenaeria
BIN URI: BOLD: ACP8645



[Dorsal]
Tetragnatha laboriosa
BIN URI: BOLD: AAA6381



[Dorsal]
Tetragnatha versicolor
BIN URI: BOLD: AAB7995



[Dorsal]
Thymoitis unimaculatus
BIN URI: BOLD: AAE7853



[Dorsal]
Anystidae
BIN URI: BOLD: AAM7961



[Dorsal]
Anystidae
BIN URI: BOLD: ABW5642



[Dorsal]
Anystidae
BIN URI: BOLD: ABW2639



[Dorsal]
Lepidocyrtus
BIN URI: BOLD: ACM2009



[Lateral]
Isotomidae
BIN URI: BOLD: ACJ0127



[Dorsal]
Chaetocnema concinna
BIN URI: BOLD: ABA9949



[Dorsal]
Crepidodera sculpturata
BIN URI: BOLD: ACA4421



[Dorsal]
Crepidodera sculpturata
BIN URI: BOLD: ACP9505



[Lateral]
Paria thoracica
BIN URI: BOLD: AAH0390



[Dorsal]
Phyllotreta
BIN URI: BOLD: AAH0261



[Dorsal]
Coccinellidae
BIN URI: BOLD: AAB5640



[Lateral]
Hylesinus aculeatus
BIN URI: BOLD: AAU7331



[Lateral]
Curculionidae
BIN URI: BOLD: ACP8780



[Lateral]
Mordellidae
BIN URI: BOLD: ACP7703



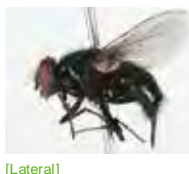
[Dorsal]
Phalacridae
BIN URI: BOLD: AAG4848



[Dorsal]
Stenus occidentalis
BIN URI: BOLD: ACP5027



[Lateral]
Liriomyza trifoliarum
BIN URI: BOLD: AAK8751



[Lateral]
Calliphoridae
BIN URI: BOLD: AAG6746



[Lateral]
Diptera
BIN URI: BOLD: AAA7470



[Lateral]
Diptera
BIN URI: BOLD: AAG6745



[Lateral]
Cecidomyiidae
BIN URI: BOLD: ACJ7307



[Lateral]
Cecidomyiidae
BIN URI: BOLD: ACF7633



[Lateral]
Cecidomyiidae
BIN URI: BOLD:ABV1222



[Lateral]
Cecidomyiidae
BIN URI: BOLD:ABA1220



[Lateral]
Cecidomyiidae
BIN URI: BOLD:AAH2876



[Lateral]
Cecidomyiidae
BIN URI: BOLD:AAG3625



[Lateral]
Cecidomyiidae
BIN URI: BOLD:ABW2744



[Lateral]
Cecidomyiidae
BIN URI: BOLD:AAJ5226



[Lateral]
Cecidomyiidae
BIN URI: BOLD:ACN7849



[Lateral]
Cecidomyiidae
BIN URI: BOLD:ACP8981



[Lateral]
Cecidomyiidae
BIN URI: BOLD:AAH3639



[Lateral]
Ceratopogonidae
BIN URI: BOLD:AAG6433



[Lateral]
Ablabesmyia americana
BIN URI: BOLD:AAC8567



[Lateral]
Cladotanytarsus atridorsum
BIN URI: BOLD:AAJ3263



[Lateral]
Cricotopus sp. 18ES
BIN URI: BOLD:AAG0996



[Lateral]
Chironomidae
BIN URI: BOLD:AAG1002



[Lateral]
Microspectra
BIN URI: BOLD:ABV1194



[Lateral]
Procladius sp. 1ES
BIN URI: BOLD:AAG3920



[Lateral]
Procladius
BIN URI: BOLD:AAG5513



[Lateral]
Chironomidae
BIN URI: BOLD:ACJ3722



[Lateral]
Chironomidae
BIN URI: BOLD:AAP5118



[Lateral]
Chironomidae
BIN URI: BOLD:ACM0759



[Dorsal]
Chironomidae
BIN URI: BOLD:AAL7361



[Lateral]
Chironomidae
BIN URI: BOLD:ACJ6495



[Lateral]
Chironomidae
BIN URI: BOLD:AAJ5354



[Lateral]
Chironomidae
BIN URI: BOLD:ABV1227



[Lateral]
Chloropidae
BIN URI: BOLD:AAV6114



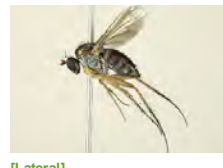
[Lateral]
Aedes vexans
BIN URI: BOLD:AAA7067



[Lateral]
Dolichopodidae
BIN URI: BOLD:AAD2041



[Lateral]
Dolichopodidae
BIN URI: BOLD:AAG9713



[Lateral]
Dolichopodidae
BIN URI: BOLD:AAP8922



[Lateral]
Dryomyza anilis
BIN URI: BOLD:AAC6974



[Lateral]
Ephydriidae
BIN URI: BOLD:AAG2754



[Lateral]
Platypalpus trivialis
BIN URI: BOLD:AAP8908



[Lateral]
Empididae
BIN URI: BOLD:AAM6655



[Lateral]
Empididae
BIN URI: BOLD:AAF9771



[Lateral]
Gnophomyia
BIN URI: BOLD:ABW4463



[Lateral]
Tipulidae
BIN URI: BOLD:AAU6544



[Lateral]
Atherigona
BIN URI: BOLD:AAJ8579



[Lateral]
Coenosia tigrina
BIN URI: BOLD:AAB5609



[Lateral]
Muscina pascuorum
BIN URI: BOLD:AAG1714



[Lateral]
Phaonia tuguriorum
BIN URI: BOLD:AAL2750



[Lateral]
Mycetophilidae
BIN URI: BOLD:ABU5545



[Lateral]
Mycetophila fungorum
BIN URI: BOLD:ACF2821



[Lateral]
Mycetophilidae
BIN URI: BOLD:AAG4905



[Lateral]
Mycetophilidae
BIN URI: BOLD:AAN8586



[Lateral]
Phoridae
BIN URI: BOLD:AAG3236



[Lateral]
Phoridae
BIN URI: BOLD:AAG3248



[Lateral]
Phoridae
BIN URI: BOLD:AAZ6701



[Lateral]
Phoridae
BIN URI: BOLD:ABU5535



[Lateral]
Diptera
BIN URI: BOLD:AAG6743



[Lateral]
Diptera
BIN URI: BOLD:ABA6471



[Lateral]
Sciaridae
BIN URI: BOLD:AAH3914



[Lateral]
Sciaridae
BIN URI: BOLD:AAV1302



[Lateral]
Sciaridae
BIN URI: BOLD:ACG9863



[Lateral]
Sciaridae
BIN URI: BOLD:ABA6407



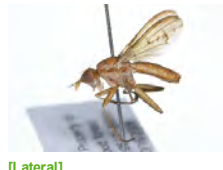
[Lateral]
Sciaridae
BIN URI: BOLD:AAN6770



[Lateral]
Sciaridae
BIN URI: BOLD:AAN6447



[Lateral]
Sciomyzidae
BIN URI: BOLD:AAM9216



[Lateral]
Sciomyzidae
BIN URI: BOLD:AAG7440



[Lateral]
Tetanocera sp. 5
BIN URI: BOLD:AAE9313



[Lateral]
Simulium
BIN URI: BOLD:AAB1114



[Lateral]
Sphaeroceridae
BIN URI: BOLD:AAG7286



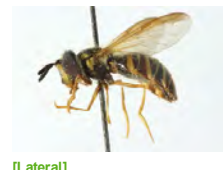
[Lateral]
Spelobia ochripes
BIN URI: BOLD:AAG7279



[Lateral]
Sphaeroceridae
BIN URI: BOLD:ABV3224



[Lateral]
Stratiomyidae
BIN URI: BOLD:AAC9839



[Lateral]
Chrysotoxum perplexum
BIN URI: BOLD:ABZ5562



[Lateral]
Syrphidae
BIN URI: BOLD:AAB2384



[Lateral]
Syrphus ribesii
BIN URI: BOLD:AAA4570



[Lateral]
Ptilodexia conjuncta
BIN URI: BOLD:AAG2147



[Lateral]
Acanalonia conica
BIN URI: BOLD:AAJ5015



[Dorsal]
Orius majusculus
BIN URI: BOLD:ABA5781



[Dorsal]
Rhopalosiphum padi
BIN URI: BOLD:AAA9899



[Lateral]
Empoasca
BIN URI: BOLD:ACP7407



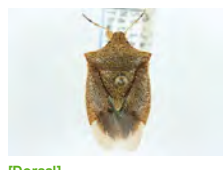
[Dorsal]
Erythroneura rubrella
BIN URI: BOLD:AAV0164



[Dorsal]
Lygus lineolaris
BIN URI: BOLD:AAA5803



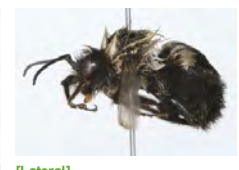
[Lateral]
Stenodema
BIN URI: BOLD:AAF9956



[Dorsal]
Euschistus variolarius
BIN URI: BOLD:AAE0844



[Lateral]
Apis mellifera
BIN URI: BOLD:AAA2326



[Lateral]
Bombus impatiens
BIN URI: BOLD:ABZ2516



[Lateral]
Aphidius ervi
BIN URI: BOLD:ACI2531



[Lateral]
Aphidiinae
BIN URI: BOLD:AAA4188



[Lateral]
Ephedrus
BIN URI: BOLD:ACF5763



[Lateral]
Glyptapanteles sp.
BIN URI: BOLD:AAA4781



[Lateral]
Alysiinae
BIN URI: BOLD:AAG1260



[Lateral]
Braconidae
BIN URI: BOLD:ACH0328



[Lateral]
Braconidae
BIN URI: BOLD:ACC5952



[Lateral]
Braconidae
BIN URI: BOLD:ACE7565



[Lateral]
Hymenoptera
BIN URI: BOLD:AAU8638



[Lateral]
Hymenoptera
BIN URI: BOLD:AAG1429



[Lateral]
Hymenoptera
BIN URI: BOLD:AAO2112



[Lateral]
Copidosoma
BIN URI: BOLD:AAZ0163



[Lateral]
Eulophidae
BIN URI: BOLD:ACO2616



[Lateral]
Eulophidae
BIN URI: BOLD:ABX2584



[Lateral]
Tetrastichinae
BIN URI: BOLD:ACP8769



[Lateral]
Cynipidae
BIN URI: BOLD:AAG0775



[Lateral]
Camponotus pennsylvanicus
BIN URI: BOLD:AAA9461



[Lateral]
Formica glacialis
BIN URI: BOLD:AAA1468



[Lateral]
Lasius
BIN URI: BOLD:AAB9126



[Lateral]
Poner pennsylvanica
BIN URI: BOLD:AAF0443



[Lateral]
Lasioslossum laevisissimum
BIN URI: BOLD:AAA7513



[Lateral]
Hymenoptera
BIN URI: BOLD:ABA6171



[Lateral]
Hymenoptera
BIN URI: BOLD:AAA6280



[Lateral]
Lissonota coracina
BIN URI: BOLD:AAG7794



[Lateral]
Hymenoptera
BIN URI: BOLD:AAU8441



[Lateral]
Mesoleptus congener
BIN URI: BOLD:ACF0492



[Lateral]
Pimpla pedalis
BIN URI: BOLD:AAD5192



[Lateral]
Ichneumonidae
BIN URI: BOLD:ACC0639



[Lateral]
Tranosema rostrale
BIN URI: BOLD:AAD1926



[Lateral]
Zaglyptus varipes
BIN URI: BOLD:AAG0382



[Lateral]
Ichneumonidae
BIN URI: BOLD:AAV6849



[Lateral]
Ichneumonidae
BIN URI: BOLD:AAV6819



[Lateral]
Ichneumonidae
BIN URI: BOLD:AAH1522



[Lateral]
Hymenoptera
BIN URI: BOLD:ACF3297



[Lateral]
Ichneumonidae
BIN URI: BOLD:ABA8048



[Lateral]
Cryptinae
BIN URI: BOLD:AAG7622



[Lateral]
Hymenoptera
BIN URI: BOLD:AAU9255



[Lateral]
Homotropus signatus
BIN URI: BOLD:AAH2172



[Lateral]
Ichneumonidae
BIN URI: BOLD:AAW0431



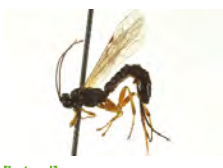
[Lateral]
Ichneumonidae
BIN URI: BOLD:AAU8850



[Lateral]
Orthocentrinae
BIN URI: BOLD:AAG0953



[Lateral]
Orthocentrinae
BIN URI: BOLD:AAG8257



[Lateral]
Tromatobia variabilis
BIN URI: BOLD:AAD5195



[Lateral]
Ichneumonidae
BIN URI: BOLD:ACJ0160



[Lateral]
Ichneumonidae
BIN URI: BOLD:ABY5647



[Dorsal]
Megaspilidae
BIN URI: BOLD:ACF8462



[Lateral]
Myrmaridae
BIN URI: BOLD:ABW3187



[Lateral]
Myrmaridae
BIN URI: BOLD:ABW3131



[Lateral]
Mymaridae
BIN URI: BOLD:ACN6494



[Lateral]
Mymaridae
BIN URI: BOLD:ABA9139



[Lateral]
Telenomus
BIN URI: BOLD:ACJ6753



[Lateral]
Platygastridae
BIN URI: BOLD:ACF1485



[Lateral]
Cecidostiba
BIN URI: BOLD:ABW3206



[Dorsal]
Pteromalidae
BIN URI: BOLD:AAU9445



[Lateral]
Torymidae
BIN URI: BOLD:ACJ7048



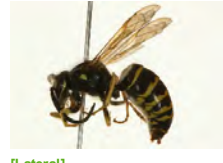
[Lateral]
Toryminae
BIN URI: BOLD:ACP9554



[Lateral]
Toryminae
BIN URI: BOLD:ACP8888



[Lateral]
Toryminae
BIN URI: BOLD:ACP8798



[Lateral]
Dolichovespula arenaria
BIN URI: BOLD:ACE9710



[Dorsal]
Bucculatrix
BIN URI: BOLD:AAH5599



[Dorsal]
Syncopacma
BIN URI: BOLD:AAF9988



[Dorsal]
Orthonama obstipata
BIN URI: BOLD:AAA3430



[Dorsal]
Protoboarmia porcelaria
BIN URI: BOLD:AAA2077



[Dorsal]
Mompha subbistrigella
BIN URI: BOLD:AAD0702



[Dorsal]
Agrotis ipsilon
BIN URI: BOLD:AAA3364



[Dorsal]
Papaipema nelita
BIN URI: BOLD:AAB8711



[Whole Specimen]
Colias philodice
BIN URI: BOLD:AAA3447



[Lateral]
Hemerobius humulinus
BIN URI: BOLD:AAG0892



[Lateral]
Orchelimum
BIN URI: BOLD:AAW8853



[Lateral]
Limnephilus submonilifer
BIN URI: BOLD:AAA3080