

School Malaise Trap Program

Species Image Library

The images of the species collected in your Malaise trap are shown below. A single representative from each species was selected to be photographed; in some cases, only a damaged specimen was available.



[Dorsal]
Lathys humilis
BIN URI: BOLD:AAU0840



[Dorsal]
Philodromus dispar
BIN URI: BOLD:AAP2403



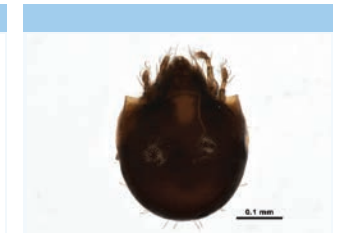
[Dorsal]
Tetragnatha montana
BIN URI: BOLD:AAF9928



[Dorsal]
Ozyptila praticola
BIN URI: BOLD:AAC7413



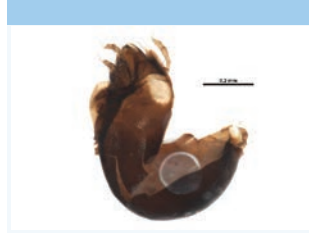
[Dorsal]
Phalangium opilio
BIN URI: BOLD:AAI4346



[Dorsal]
Trichoribates
BIN URI: BOLD:ACX7755



[Dorsal]
Trichoribates
BIN URI: BOLD:ABZ3529



[Dorsal]
Ceratozetidae
BIN URI: BOLD:ACU5511



[Dorsal]
Entomobryidae
BIN URI: BOLD:AAA8820



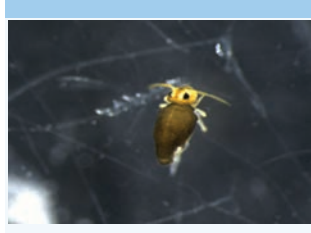
[Lateral]
Lepidocyrtus pallidus
BIN URI: BOLD:ACU0547



[Lateral]
Entomobrya multifasciata
BIN URI: BOLD:AAA7242



[Dorsal]
Bourletiellidae
BIN URI: BOLD:AAN4906



[Dorsal]
Sminthurinus niger
BIN URI: BOLD:ACE3690



[Dorsal]
Stethorus punctillum
BIN URI: BOLD:AAN6149



[Lateral]
Tychius picirostris
BIN URI: BOLD:AAP7027



[Dorsal]
Cartodere bifasciata
BIN URI: BOLD:AAW4095



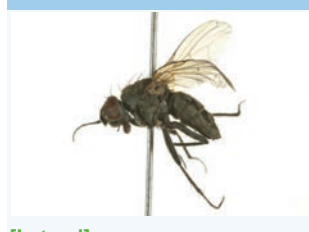
[Dorsal]
Latridiidae
BIN URI: BOLD:ACB3183



[Dorsal]
Tachyporus
BIN URI: BOLD:AAM9619



[Lateral]
Chromatomyia
BIN URI: BOLD:ACP9372



[Lateral]
Anthomyiidae
BIN URI: BOLD:AAG2465



[Lateral]
Pollenia vagabunda
BIN URI: BOLD:AAH3040



[Lateral]
Cecidomyiidae
BIN URI: BOLD:ABV0498



[Lateral]
Ceratopogonidae
BIN URI: BOLD:AAN5169



[Lateral]
Forcipomyia
BIN URI: BOLD:AAV5088



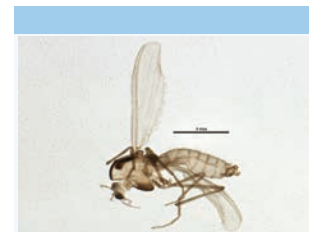
[Lateral]
Forcipomyia
BIN URI: BOLD:ACH2511



[Lateral]
Bryophaenocladus sp. 8ES
BIN URI: BOLD:AAG1021



[Lateral]
Chironomus maturus
BIN URI: BOLD:AAB4657



[Lateral]
Paratanytarsus grimmii
BIN URI: BOLD:AAD1485



[Lateral]
Psectrotanytarsus sp. ES01
BIN URI: BOLD:AAG0314



[Lateral]
Chironomidae
BIN URI: BOLD:AAG1019



[Lateral]
Orthocladiinae
BIN URI: BOLD:ACP8287



[Lateral]
Elachiptera
BIN URI: BOLD:AAH4208



[Lateral]
Medetera sp. SEB5
BIN URI: BOLD:ACA1124



[Lateral]
Suillia limbata
BIN URI: BOLD:AAP8074



[Lateral]
Keroplatidae
BIN URI: BOLD:AAM9013



[Lateral]
Cheilotrichia cinerascens
BIN URI: BOLD:ABV4106



[Lateral]
Coenosia tigrina
BIN URI: BOLD:AAH5609



[Lateral]
Phoridae
BIN URI: BOLD:AAG3236



[Lateral]
Phoridae
BIN URI: BOLD:ACX6055



[Lateral]
Scathophaga furcata
BIN URI: BOLD:ACX4405



[Lateral]
Bradysia
BIN URI: BOLD:AAV1295



[Lateral]
Sciaridae
BIN URI: BOLD:AAN6447



[Lateral]
Ctenosciara hyalipennis
BIN URI: BOLD:AAH3983



[Lateral]
Lycoriella
BIN URI: BOLD:ABA1215



[Lateral]
Sciaridae
BIN URI: BOLD:ACB9102



[Lateral]
Sciaridae
BIN URI: BOLD:AAN6453



[Lateral]
Sciaridae
BIN URI: BOLD:AAP6472



[Lateral]
Leptocera neofinalis□
BIN URI: BOLD:AAP6443



[Lateral]
Pullimosina pullula
BIN URI: BOLD:AAG7284



[Lateral]
Sphaeroceridae
BIN URI: BOLD:AAG7275



[Lateral]
Spelobia ochripes
BIN URI: BOLD:AAG7279



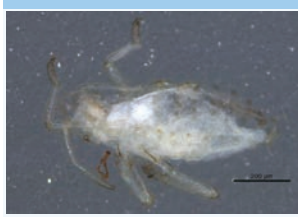
[Lateral]
Eupeodes latifasciatus
BIN URI: BOLD:ACY1719



[Lateral]
Tipula paludosa
BIN URI: BOLD:AAE7386



[Lateral]
Trichoceridae
BIN URI: BOLD:ABY1848



[Lateral]
Anoecia fulviabdominalis
BIN URI: BOLD:AAH2871



[Lateral]
Aulacorthum solani
BIN URI: BOLD:AAB2572



[Dorsal]
Prociphilus americanus
BIN URI: BOLD:AAD3097



[Dorsal]
Rhopalosiphum padi
BIN URI: BOLD:AAA9899



[Dorsal]
Rhopalosiphum padi
BIN URI: BOLD:ACF2924



[Lateral]
Uroleucon taraxaci
BIN URI: BOLD:ABY4763



[Dorsal]
Hemiptera
BIN URI: BOLD:AAO8340



[Lateral]
Eupteryx decemnotata
BIN URI: BOLD:ACN3029



[Dorsal]
Ribautiana debilis
BIN URI: BOLD:ACC4476



[Dorsal]
Cicadellidae
BIN URI: BOLD:ACI5356



[Lateral]
Typhlocyba
BIN URI: BOLD:ABA5828



[Lateral]
Psyllidae
BIN URI: BOLD:ACX7856



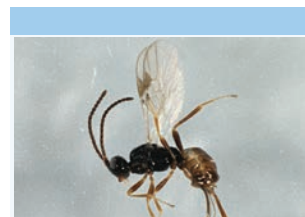
[Dorsal]
Stephanitis takeyai
BIN URI: BOLD:AAF3257



[Lateral]
Empoasca
BIN URI: BOLD:AAN8406



[Dorsal]
Alysiinae
BIN URI: BOLD:ACE4724



[Lateral]
Blacus stelfoxi
BIN URI: BOLD:AAZ9744



[Lateral]
Dinotrema
BIN URI: BOLD:AAU8379



[Lateral]
Dinotrema
BIN URI: BOLD:ACP4606



[Lateral]
Aphidiinae
BIN URI: BOLD:AAH7398



[Lateral]
Monoctonus caricis
BIN URI: BOLD:ACR4483



[Lateral]
Alysiinae
BIN URI: BOLD:AAN8138



[Lateral]
Diapriidae
BIN URI: BOLD:ACJ5673



[Lateral]
Hymenoptera
BIN URI: BOLD:AAM7487



[Dorsal]
Diapriidae
BIN URI: BOLD:ABV2731



[Lateral]
Asecodes
BIN URI: BOLD:ACD8255



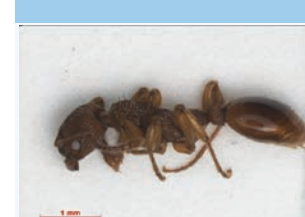
[Lateral]
Alloxyta
BIN URI: BOLD:AAU8458



[Lateral]
Formica pacifica□
BIN URI: BOLD:AAI5674



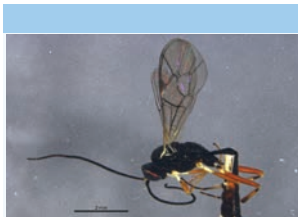
[Lateral]
Lasius niger
BIN URI: BOLD:ABZ8330



[Lateral]
Myrmica scabrinodis
BIN URI: BOLD:ABY4844



[Lateral]
Cubocephalus anatorius
BIN URI: BOLD:AAH1482



[Lateral]
Diadegma



[Lateral]
Megastylus orbitator



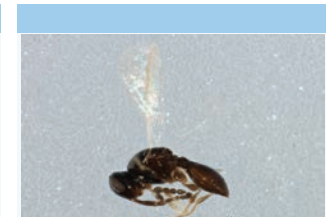
[Lateral]
Megastylus jft01



[Lateral]
Anagrus



[Lateral]
Platygastriidae



[Lateral]
Platygastriidae

BIN URI: BOLD:ACP9048



[Lateral]

Hymenoptera
BIN URI: BOLD:ACQ9847

BIN URI: BOLD:AAK5985



[Dorsal]

Udea profundalis
BIN URI: BOLD:ABZ0360

BIN URI: BOLD:AAF3508



[Dorsal]

Apamea amputatrix
BIN URI: BOLD:AAA3867

BIN URI: BOLD:AAN9413



[Lateral]

Psocoptera
BIN URI: BOLD:AAN8452

BIN URI: BOLD:AAU9340



[Lateral]

Psocoptera
BIN URI: BOLD:AAY6680

BIN URI: BOLD:ABW3192



[Dorsal]

Psocoptera
BIN URI: BOLD:AAY6687



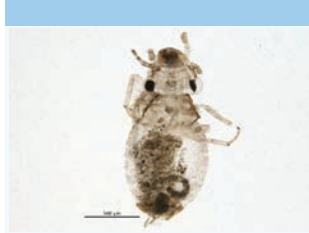
[Lateral]

Lachesillidae
BIN URI: BOLD:AAF1729



[Lateral]

Lachesillidae
BIN URI: BOLD:ACX8943



[Dorsal]

Cerobasis guestfalica
BIN URI: BOLD:ACX5665