

# School Malaise Trap Program

## Species Image Library

The images of the species collected in your Malaise trap are shown below. A single representative for each species was selected to be photographed; in some cases, only a damaged specimen was available.

Re-render images:  per row

300 Records Per Page - Pages: 1



[Dorsal]  
*Cheiracanthium mildei*  
BIN URI: BOLD: AAB7601



[Dorsal]  
*Ceraticelus similis*  
BIN URI: BOLD: AAF1318



[Dorsal]  
*Parasteatoda tepidariorum*  
BIN URI: BOLD: AAC0175



[Lateral]  
*Platnickina tinctoria*  
BIN URI: BOLD: AAJ7456



[Dorsal]  
*Trichoribates*  
BIN URI: BOLD: ACL2370



[Dorsal]  
Anystidae  
BIN URI: BOLD: ABW5642



[Lateral]  
*Entomobrya*  
BIN URI: BOLD: ACL6239



[Lateral]  
*Orchesella cincta*  
BIN URI: BOLD: AAA6611



[Lateral]  
Entomobryidae  
BIN URI: BOLD: ACF9575



[Lateral]  
Collembola  
BIN URI: BOLD: ACC0359



[Lateral]  
*Longitarsus scutellaris*  
BIN URI: BOLD: AAN6151



[Dorsal]  
*Propylea quattuordecimpunctata*  
BIN URI: BOLD: AAF6935



[Dorsal]  
*Orthoperus scutellaris*  
BIN URI: BOLD: AAU7040



[Dorsal]  
*Sitona hispidulus*  
BIN URI: BOLD: AAH0130



[Dorsal]  
Erotylidae  
BIN URI: BOLD: ABA6320



[Dorsal]  
*Philonthus carbonarius*  
BIN URI: BOLD: AAR1764



[Dorsal]  
*Philonthus cognatus*  
BIN URI: BOLD: AAL5087



[Dorsal]  
*Tachinus jocosus*  
BIN URI: BOLD: ACC9422



[Dorsal]  
Staphylinidae  
BIN URI: BOLD: AAU6968



[Lateral]  
Staphylinidae  
BIN URI: BOLD: ABW2844



[Dorsal]  
*Trixagus carinicolis*  
BIN URI: BOLD: AAN6148



[Dorsal]  
Trixagus  
BIN URI: BOLD: AAU6966



[Dorsal]  
*Forficula auricularia-A*  
BIN URI: BOLD: AAG9897



[Lateral]  
Anthomyiidae  
BIN URI: BOLD: AAF4234



[Lateral]  
Anthomyiidae  
BIN URI: BOLD: AAN5497



[Lateral]  
Cecidomyiidae  
BIN URI: BOLD: AAN5205



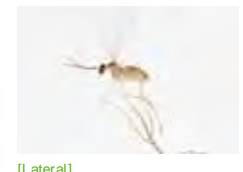
[Lateral]  
Cecidomyiidae  
BIN URI: BOLD: AAH3639



[Lateral]  
Cecidomyiidae  
BIN URI: BOLD: ACP9644



[Lateral]  
Cecidomyiidae  
BIN URI: BOLD: AAY6452



[Lateral]  
Cecidomyiidae  
BIN URI: BOLD: AAN5226



[Lateral]  
Cecidomyiidae  
BIN URI: BOLD:ABX0130



[Lateral]  
Cecidomyiidae  
BIN URI: BOLD:AA5250



[Lateral]  
Cecidomyiidae  
BIN URI: BOLD:ABV1222



[Lateral]  
Ceratopogonidae  
BIN URI: BOLD:AA5169



[Lateral]  
Chamaemyiidae  
BIN URI: BOLD:AAG6951



[Lateral]  
Bryophaenocladus sp. 8ES  
BIN URI: BOLD:AAG1021



[Lateral]  
Chironomus  
BIN URI: BOLD:ABV1236



[Lateral]  
Metriocnemus sp. 4ES  
BIN URI: BOLD:ABX5809



[Lateral]  
Paraphaenocladus impensus  
BIN URI: BOLD:AAC4197



[Lateral]  
Smittia sp. 23ES  
BIN URI: BOLD:AAH9641



[Lateral]  
Chironomidae  
BIN URI: BOLD:AAH2254



[Lateral]  
Chironomidae  
BIN URI: BOLD:AA5342



[Lateral]  
Chironomidae  
BIN URI: BOLD:AA5359



[Lateral]  
Orthoclaudiinae  
BIN URI: BOLD:ACP8354



[Lateral]  
Culicidae  
BIN URI: BOLD:ABY7666



[Lateral]  
Dolichopodidae  
BIN URI: BOLD:AAG9713



[Lateral]  
Coenosia tigrina  
BIN URI: BOLD:AAB5609



[Lateral]  
Muscidae  
BIN URI: BOLD:AAG1711



[Lateral]  
Cordyla  
BIN URI: BOLD:ABV9015



[Lateral]  
Exechia  
BIN URI: BOLD:ACD9501



[Lateral]  
Mycetophilidae  
BIN URI: BOLD:AA5858



[Lateral]  
Phoridae  
BIN URI: BOLD:AAG3236



[Lateral]  
Phoridae  
BIN URI: BOLD:AAG3248



[Lateral]  
Megaselia  
BIN URI: BOLD:AAG3274



[Lateral]  
Phoridae  
BIN URI: BOLD:ABU5528



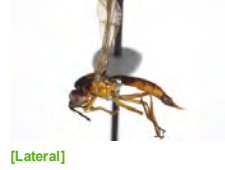
[Lateral]  
Phoridae  
BIN URI: BOLD:AAP4685



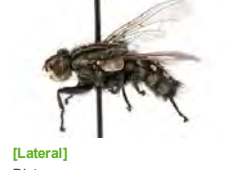
[Lateral]  
Phoridae  
BIN URI: BOLD:AAG3301



[Lateral]  
Phoridae  
BIN URI: BOLD:ABV3314



[Lateral]  
Loxocera cylindrica  
BIN URI: BOLD:AAF9702



[Lateral]  
Diptera  
BIN URI: BOLD:AAG6743



[Lateral]  
Scatopsidae  
BIN URI: BOLD:AAV1136



[Lateral]  
Sciaridae  
BIN URI: BOLD:AAH3939



[Lateral]  
Sciaridae  
BIN URI: BOLD:AAZ2139



[Lateral]  
Lycoriella castanescens  
BIN URI: BOLD:ABA1215



[Lateral]  
Sciaridae  
BIN URI: BOLD:AAV1261



[Lateral]  
Sciaridae  
BIN URI: BOLD:AAP6465



[Lateral]  
Sciaridae  
BIN URI: BOLD:ABA6407



[Lateral]  
Sciaridae  
BIN URI: BOLD:ABU5520



[Lateral]  
Sciaridae  
BIN URI: BOLD:ABU5521



[Lateral]  
Sciaridae  
BIN URI: BOLD:AA56444



[Lateral]  
Spelobia ochripes  
BIN URI: BOLD:AAG7279



[Lateral]  
Sphaeroceridae  
BIN URI: BOLD:ABV3227



[Lateral]  
Sphaeroceridae  
BIN URI: BOLD:AAG7289



[Lateral]  
Euleia fratria  
BIN URI: BOLD:AAF7592



[Lateral]  
Nephrotoma ferruginea  
BIN URI: BOLD:ABX6186



[Lateral]  
Tipulidae  
BIN URI: BOLD:AAF9041



[Lateral]  
Tipula paludosa  
BIN URI: BOLD:AAE7386



[Lateral]  
Tipula cf. maritima  
BIN URI: BOLD:AAF8978



[Lateral]  
Aleyrodes  
BIN URI: BOLD:ABW2915



[Dorsal]  
Hemiptera  
BIN URI: BOLD:AAI3667



[Lateral]  
Melaphis rhois  
BIN URI: BOLD:ABZ6353



[Dorsal]  
Metopolophium dirhodum  
BIN URI: BOLD:AAE7796



[Dorsal]  
Rhopalosiphum padi  
BIN URI: BOLD:AAA9899



[Lateral]  
Therioaphis trifolii  
BIN URI: BOLD:AAA3759



[Lateral]  
Aphrophora alni  
BIN URI: BOLD:AAZ2091



[Lateral]  
Aphrodes  
BIN URI: BOLD:AAW5226



[Lateral]  
Ceratagallia sanguinolenta  
BIN URI: BOLD:AAG2874



[Lateral]  
Dikraneura  
BIN URI: BOLD:AAZ2090



[Lateral]  
Draeculacephala paludosa  
BIN URI: BOLD:AAG2883



[Lateral]  
Empoasca decipiens  
BIN URI: BOLD:AAZ6741



[Lateral]  
Empoasca  
BIN URI: BOLD:AAG8850



[Lateral]  
Erythroneura rubrella  
BIN URI: BOLD:AAZ8498



[Lateral]  
Muirodelphax  
BIN URI: BOLD:AAC3517



[Lateral]  
Stictocephala alta  
BIN URI: BOLD:AAI7113



[Lateral]  
Lygocoris pabulinus  
BIN URI: BOLD:AAZ2218



[Lateral]  
Phytocoris neglectus  
BIN URI: BOLD:AAE4645



[Dorsal]  
Stygnocoris rusticus  
BIN URI: BOLD:AAE2297



[Lateral]  
Aphelinus varipes  
BIN URI: BOLD:ABW3282



[Lateral]  
Aphelinidae  
BIN URI: BOLD:ACC1623



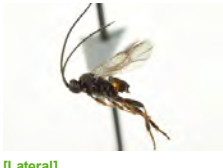
[adult]  
Coccophaginae  
BIN URI: BOLD:ABA9128



[Lateral]  
Aphelinidae  
BIN URI: BOLD:ABA5901



[Dorsal]  
Aphelinidae  
BIN URI: BOLD:ACI8174



[Lateral]  
Apanteles ensiger  
BIN URI: BOLD:AAA3764



[Lateral]  
Aphidius  
BIN URI: BOLD:ACF4786



[Lateral]  
Hymenoptera  
BIN URI: BOLD:AAM7459



[Lateral]  
Dinotrema  
BIN URI: BOLD:ACG8208



[Lateral]  
Hymenoptera  
BIN URI: BOLD:AAU8379



[Lateral]  
Hymenoptera  
BIN URI: BOLD:AAU8592



[Lateral]  
Braconidae  
BIN URI: BOLD:ACP8914



[Lateral]  
Hymenoptera  
BIN URI: BOLD:AAG1429



[Lateral]  
Hymenoptera  
BIN URI: BOLD:AAU8345



[Lateral]  
Hymenoptera  
BIN URI: BOLD:AAZ9201



[Lateral]  
Chrysocharis  
BIN URI: BOLD:ACP8445



[Lateral]  
Formica  
BIN URI: BOLD:AAE0406



[Lateral]  
*Formica glacialis*  
BIN URI: BOLD:AAA1468



[Lateral]  
Ponerinae  
BIN URI: BOLD:AAM7079



[Dorsal]  
Formicidae  
BIN URI: BOLD:AAF0890



[Lateral]  
*Lasius*  
BIN URI: BOLD:ABY9254



[Lateral]  
*Lasius*  
BIN URI: BOLD:ABZ0423



[Lateral]  
*Prenolepis imparis*  
BIN URI: BOLD:AAC1302



[Lateral]  
*Lasioglossum imitatum*  
BIN URI: BOLD:AAA7868



[Lateral]  
*Lasioglossum succinipenne*  
BIN URI: BOLD:ACF2785



[Lateral]  
*Lasioglossum*  
BIN URI: BOLD:AAA3782



[Lateral]  
*Cymodusa distincta*  
BIN URI: BOLD:ABZ4364



[Lateral]  
Hymenoptera  
BIN URI: BOLD:AAD4214



[Lateral]  
*Lissonota coracina*  
BIN URI: BOLD:AAG7794



[Lateral]  
Hymenoptera  
BIN URI: BOLD:AAZ0182



[Lateral]  
Hymenoptera  
BIN URI: BOLD:AAM7494



[Lateral]  
Hymenoptera  
BIN URI: BOLD:AAH8654



[Lateral]  
*Theroscopus ochrogaster*  
BIN URI: BOLD:ACL6943



[Lateral]  
Hymenoptera  
BIN URI: BOLD:ACF3297



[Lateral]  
Ichneumonidae  
BIN URI: BOLD:AAG7714



[Lateral]  
*Syrphoctonus signatus*  
BIN URI: BOLD:ACF0461



[Lateral]  
*Syrphophilus tricornutus*  
BIN URI: BOLD:AAH1684



[Lateral]  
Ichneumonidae  
BIN URI: BOLD:AAU8850



[Lateral]  
Ichneumonidae  
BIN URI: BOLD:AAH3148



[Lateral]  
Hymenoptera  
BIN URI: BOLD:AAU8582



[Lateral]  
*Anagrus*  
BIN URI: BOLD:AAZ1968



[Lateral]  
Mymaridae  
BIN URI: BOLD:ABV9379



[Lateral]  
*Anagrus*  
BIN URI: BOLD:AAU9004



[Lateral]  
Mymaridae  
BIN URI: BOLD:ACB6947



[Lateral]  
Mymaridae  
BIN URI: BOLD:ABW3187



[Lateral]  
Hymenoptera  
BIN URI: BOLD:ABX2601



[Lateral]  
Mymaridae  
BIN URI: BOLD:ACE1230



[Lateral]  
*Amblyaspis*  
BIN URI: BOLD:AAU8575



[Lateral]  
Platygastridae  
BIN URI: BOLD:ABW3144



[Lateral]  
Platygastridae  
BIN URI: BOLD:ACJ7082



[Lateral]  
Platygastridae  
BIN URI: BOLD:AAU9072



[Lateral]  
Platygastridae  
BIN URI: BOLD:ABV2659



[Lateral]  
Platygastridae  
BIN URI: BOLD:ACF6498



[Lateral]



[Lateral]



[Lateral]



[Dorsal]



[Adult]

Platygastridae  
BIN URI: BOLD:ACC7568

[Lateral]  
Platygastridae  
BIN URI: BOLD:AAU8342

Pteromalidae  
BIN URI: BOLD:AAG7959

Pteromalidae  
BIN URI: BOLD:ACD0889

Metallus lanceolatus  
BIN URI: BOLD:AAP1085

Nesoselandria morio  
BIN URI: BOLD:AAU8235



[Dorsal]  
Plutella porrectella  
BIN URI: BOLD:ACG9804



[Lateral]  
Conwentzia pineticola  
BIN URI: BOLD:AAU1711



[Lateral]  
Melanoplus  
BIN URI: BOLD:AAA4555



[Lateral]  
Valenzuela burmeisteri  
BIN URI: BOLD:AAO4092



[Lateral]  
Valenzuela  
BIN URI: BOLD:AAP2603



[Lateral]  
Psocoptera  
BIN URI: BOLD:AAF1729



[Lateral]  
Psocoptera  
BIN URI: BOLD:AAP2601



[Lateral]  
Psocoptera  
BIN URI: BOLD:ABA6546



[Lateral]  
Psocoptera  
BIN URI: BOLD:AAP4628



[Lateral]  
Limnephilus submonilifer  
BIN URI: BOLD:AAA3080