

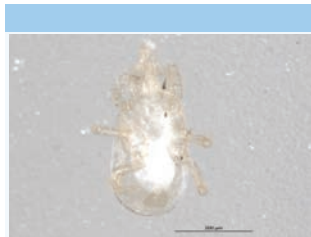
# School Malaise Trap Program

## Species Image Library

The images of the species collected in your Malaise trap are shown below. A single representative from each species was selected to be photographed; in some cases, only a damaged specimen was available.



[Lateral]  
*Tetragnatha laboriosa*  
BIN URI: BOLD:AAA6381



[Ventral]  
Ascidae  
BIN URI: BOLD:ABA5555



[Dorsal]  
Anystidae  
BIN URI: BOLD:ABW2639



[Dorsal]  
Tetranychidae  
BIN URI: BOLD:ACC8918



[Lateral]  
*Entomobrya nivalis*  
BIN URI: BOLD:AAA8924



[Dorsal]  
*Atomaria ephippiata*  
BIN URI: BOLD:ACI4909



[Dorsal]  
*Corticarina minuta*  
BIN URI: BOLD:ACD4236



[Dorsal]  
*Cyphon variabilis*  
BIN URI: BOLD:ACX4619



[Dorsal]  
Cyphon  
BIN URI: BOLD:AAU7169



[Lateral]  
*Paradelia arctica*  
BIN URI: BOLD:AAP5045



[Lateral]  
Cecidomyiidae  
BIN URI: BOLD:ACX8764



[Lateral]  
Cecidomyiidae  
BIN URI: BOLD:ACB0890



[Lateral]  
Cecidomyiidae  
BIN URI: BOLD:ACX7895



[Lateral]  
Chironomidae  
BIN URI: BOLD:AAG0996



[Lateral]  
*Limnophyes* sp. 14ES  
BIN URI: BOLD:ABU5525



[Lateral]  
*Limnophyes*  
BIN URI: BOLD:ABW2734



[Lateral]  
Smittia  
BIN URI: BOLD:ACB0946



[Lateral]  
*Tanytarsus mendax*  
BIN URI: BOLD:ACX4575



[Lateral]  
*Biorbitella hesperia*  
BIN URI: BOLD:AAV6118



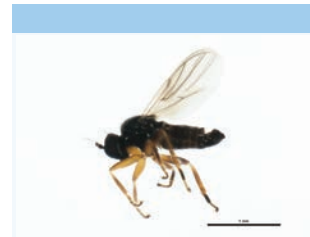
[Lateral]  
*Elachiptera* sp. TAW1  
BIN URI: BOLD:AAP5169



[Lateral]  
Elachiptera  
BIN URI: BOLD:AAH4208



[Lateral]  
*Crossopalpus* sp. 1 JMC  
BIN URI: BOLD:ACE6928



[Lateral]  
Hybotidae  
BIN URI: BOLD:AAN5501



[Lateral]  
*Hebecnema umbratica*  
BIN URI: BOLD:AAG1719



[Lateral]  
Megaselia  
BIN URI: BOLD:AAG3266



[Lateral]  
Megaselia  
BIN URI: BOLD:AAU5622



[Lateral]  
Phoridae  
BIN URI: BOLD:AAG3304



[Lateral]  
Psychoda  
BIN URI: BOLD:AAF9317



[Lateral]  
Psychodidae  
BIN URI: BOLD:AAG3154



[Lateral]  
*Bradysia tilicola*  
BIN URI: BOLD:ACB1143



[Lateral]  
Sciaridae  
BIN URI: BOLD:AAU6513



[Lateral]  
*Lycoriella*  
BIN URI: BOLD:AAL7869



[Lateral]  
Sciaridae  
BIN URI: BOLD:AAH3941



[Lateral]  
*Scatopsciara atomaria*  
BIN URI: BOLD:AAH3920



[Lateral]  
*Sciaridae*  
BIN URI: BOLD:AAM9253



[Lateral]  
Sciaridae  
BIN URI: BOLD:ACG5028



[Lateral]  
Sciaridae  
BIN URI: BOLD:ABA6407



[Lateral]  
Minilimosina vitripennis  
BIN URI: BOLD:AAG7306



[Lateral]  
Sphaeroceridae  
BIN URI: BOLD:AAG7275



[Lateral]  
Rachispoda  
BIN URI: BOLD:ACX8279



[Lateral]  
Rachispoda  
BIN URI: BOLD:AAG7277



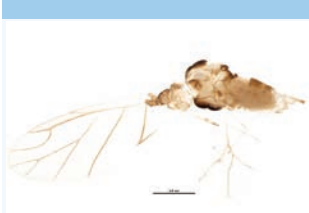
[Lateral]  
Spelobia ochripes  
BIN URI: BOLD:AAG7279



[Lateral]  
Sphaeroceridae  
BIN URI: BOLD:ACI4616



[Dorsal]  
Aphis helianthi  
BIN URI: BOLD:AAA8810



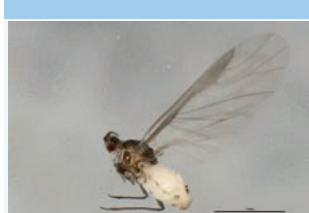
[Lateral]  
Capitophorus elaeagni  
BIN URI: BOLD:AAE3015



[Dorsal]  
Chaitophorus populialbae  
BIN URI: BOLD:AAI4166



[Dorsal]  
Cinara pinea  
BIN URI: BOLD:AAD4603



[Lateral]  
Eriosoma americanum  
BIN URI: BOLD:AAD7955



[Lateral]  
Eulachnus rileyi  
BIN URI: BOLD:AAC6347



[Lateral]  
Aphididae  
BIN URI: BOLD:AAB8566



[Dorsal]  
Metopolophium dirhodum  
BIN URI: BOLD:AAE7796



[Lateral]  
Myzus cerasi  
BIN URI: BOLD:AAB2802



[Lateral]  
Aphididae  
BIN URI: BOLD:AAB9332



[Lateral]  
Nearctaphis bakeri  
BIN URI: BOLD:AAD0902



[Lateral]  
Nearctaphis sensoriata  
BIN URI: BOLD:AAG3602



[Lateral]  
Rhopalomyzus  
BIN URI: BOLD:AAG7345



[Dorsal]  
Rhopalosiphum padi  
BIN URI: BOLD:AAA9899



[Lateral]  
Therioaphis trifolii  
BIN URI: BOLD:AAA3759



[Dorsal]  
Therioaphis tenera tenera  
BIN URI: BOLD:AAE2871



[Dorsal]  
Macrosiphum euphorbiae  
BIN URI: BOLD:AAA6213



[Lateral]  
Balclutha punctata  
BIN URI: BOLD:AAG9374



[Lateral]  
Dikraneura  
BIN URI: BOLD:AAV0227



[Dorsal]  
Empoasca  
BIN URI: BOLD:AAG8850



[Lateral]  
Typhlocyba pomaria  
BIN URI: BOLD:AAF5980



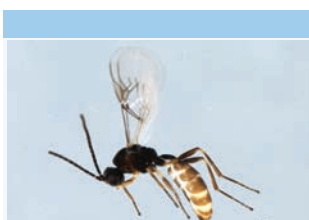
[Lateral]  
Cicadellidae  
BIN URI: BOLD:ACX7983



[Dorsal]  
Lygus lineolaris  
BIN URI: BOLD:AAA5803



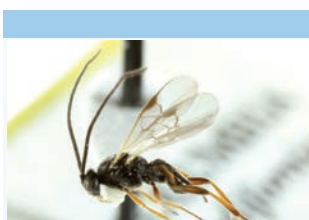
[Lateral]  
Nabis  
BIN URI: BOLD:AAB8143



[Lateral]  
Aphidius uzbekistanicus  
BIN URI: BOLD:AAJ1250



[Lateral]  
Aphidius  
BIN URI: BOLD:ACF4786



[Lateral]  
Cotesia yakutatensis  
BIN URI: BOLD:ABZ4485



[Lateral]  
Euaphidius  
BIN URI: BOLD:AAJ0884



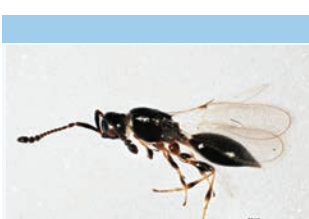
[Lateral]  
Blacinae  
BIN URI: BOLD:AAU8584



[Lateral]  
Euphorinae  
BIN URI: BOLD:ACP8405



[Lateral]  
Hymenoptera  
BIN URI: BOLD:AAU8736



[Lateral]  
Diapriidae  
BIN URI: BOLD:AAU9161



[Lateral]  
Alloxysta  
BIN URI: BOLD:ACC6746



[Lateral]  
Myrmica  
BIN URI: BOLD:AAI3346



[Lateral]  
Neliopisthus orbitalis  
BIN URI: BOLD:AAH1909



[Lateral]  
Orthocentrus  
BIN URI: BOLD:ACM2706



[Lateral]  
Hymenoptera  
BIN URI: BOLD:AAU8218



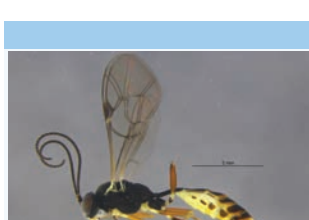
[Lateral]  
Plectiscidea  
BIN URI: BOLD:AAF4291



[Lateral]  
Hymenoptera  
BIN URI: BOLD:AAM7494



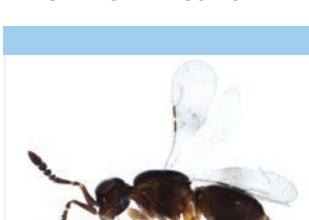
[Lateral]  
Stenomacrus  
BIN URI: BOLD:ACG3877



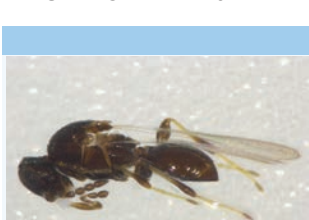
[Lateral]  
Campopleginae  
BIN URI: BOLD:AAH7726



[Lateral]  
Scambus



[Lateral]  
Megaspilidae



[Lateral]  
Synopeas



[Lateral]  
Telenomus



[Dorsal]  
Platygastriidae



[Lateral]  
Platygastriidae

BIN URI: BOLD:ABZ7956



[Lateral]

Hymenoptera  
BIN URI: BOLD:AAU8342

BIN URI: BOLD:ACL8206



[Lateral]

Platygastridae  
BIN URI: BOLD:ACA2316

BIN URI: BOLD:AAU8562



[Lateral]

Leptacis  
BIN URI: BOLD:AAG7883

BIN URI: BOLD:ABA6265



[Lateral]

Proctotrupidae  
BIN URI: BOLD:AAG7971

BIN URI: BOLD:ACT5074



[Lateral]

Asaphes vulgaris  
BIN URI: BOLD:AAP6695

BIN URI: BOLD:ACD8965



[Dorsal]

Caloptilia fraxinella  
BIN URI: BOLD:AAF8249



[Dorsal]

Plutella xylostella  
BIN URI: BOLD:AAA1513



[Dorsal]

Ephesiodes  
BIN URI: BOLD:AAA2650