

School Malaise Trap Program

Species Image Library

The images of the species collected in your Malaise trap are shown below. A single representative for each species was selected to be photographed; in some cases, only a damaged specimen was available.

Re-render images: per row

300 Records Per Page - Pages: 1



[Dorsal]
Cheiracanthium mildei
BIN URI: BOLD:AAB7601



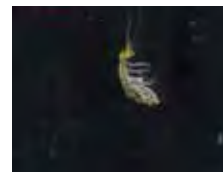
[Dorsal]
Grammonota gentilis
BIN URI: BOLD:AAA9476



[Dorsal]
Philodromus rufus vibrans
BIN URI: BOLD:AAB2768



[Dorsal]
Anystidae
BIN URI: BOLD:ABW5642



[Lateral]
Orchesella cincta
BIN URI: BOLD:AAA6611



[Lateral]
Chaetocnema hortensis
BIN URI: BOLD:AAM7650



[Lateral]
Galerucinae
BIN URI: BOLD:AAU7332



[Dorsal]
Psyllobora vigintimaculata
BIN URI: BOLD:AAH6045



[Lateral]
Corticaria
BIN URI: BOLD:AAH6154



[Dorsal]
Corticarina
BIN URI: BOLD:AAH0256



[Dorsal]
Latridius minutus
BIN URI: BOLD:AAO3898



[Lateral]
Stilbus apicalis
BIN URI: BOLD:AAH0134



[Dorsal]
Trixagus sericeus
BIN URI: BOLD:ACC2430



[Lateral]
Agromyzidae
BIN URI: BOLD:ACC4447



[Dorsal]
Anthomyiidae
BIN URI: BOLD:ACI3968



[Lateral]
Zaphne divisa
BIN URI: BOLD:AAG2441



[Lateral]
Anthomyiidae
BIN URI: BOLD:ACF2899



[Lateral]
Cecidomyiidae
BIN URI: BOLD:ABA6413



[Lateral]
Cecidomyiidae
BIN URI: BOLD:AAP6827



[Lateral]
Cecidomyiidae
BIN URI: BOLD:AAH5205



[Lateral]
Cecidomyiidae
BIN URI: BOLD:AAH5268



[Lateral]
Cecidomyiidae
BIN URI: BOLD:AAP9039



[Lateral]
Cecidomyiidae
BIN URI: BOLD:ACP3982



[Lateral]
Ceratopogonidae
BIN URI: BOLD:AAH5156



[Lateral]
Forcipomyia
BIN URI: BOLD:ACH2511



[Lateral]
Ceratopogonidae
BIN URI: BOLD:AAG6433



[Lateral]
Ceratopogonidae
BIN URI: BOLD:ACB0617



[Lateral]
Ceratopogonidae
BIN URI: BOLD:AAP9052



[Lateral]
Ablabesmyia americana
BIN URI: BOLD:AAC8567



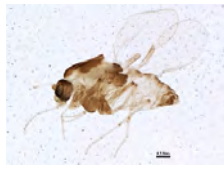
[Lateral]
Chironomidae
BIN URI: BOLD:AAB4657



[Lateral]
Chironomidae
BIN URI: BOLD:AAG5453



[Lateral]
Chironomus cf. decorus
BIN URI: BOLD:AAB7030



[Lateral]
Chironomidae
BIN URI: BOLD:AAG5450



[Lateral]
Cricotopus sylvestris
BIN URI: BOLD:AAA5299



[Lateral]
Chironomidae
BIN URI: BOLD:ABU5525



[Lateral]
Metriocnemus sp. 4ES
BIN URI: BOLD:AAA9431



[Lateral]
Microspectra polita
BIN URI: BOLD:AAC4403



[Lateral]
Paratanytarsus
BIN URI: BOLD:ACP9283



[Lateral]
Smittia edwardsi
BIN URI: BOLD:AAF4817



[Lateral]
Chironomidae
BIN URI: BOLD:AAM7064



[Lateral]
Chironomidae
BIN URI: BOLD:ACP6694



[Lateral]
Chironomidae
BIN URI: BOLD:ACM1999



[Lateral]
Chironomidae
BIN URI: BOLD:ABY0970



[Dorsal]
Chironomidae
BIN URI: BOLD:AAP3767



[Lateral]
Chironomidae
BIN URI: BOLD:ACB9634



[Lateral]
Chironomidae
BIN URI: BOLD:ACL3649



[Lateral]
Chironominae
BIN URI: BOLD:ACP7518



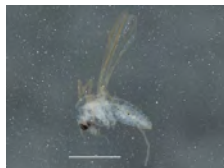
[Lateral]
Chironominae
BIN URI: BOLD:ACP9307



[Lateral]
Chironomidae
BIN URI: BOLD:AAG5457



[Lateral]
Chironominae
BIN URI: BOLD:ACL4361



[Lateral]
Chironomidae
BIN URI: BOLD:AAP7035



[Lateral]
Chironomidae
BIN URI: BOLD:ACC7718



[Lateral]
Ocella parva
BIN URI: BOLD:AAP3774



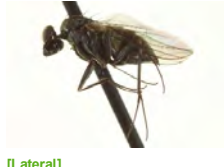
[Lateral]
Chloropidae
BIN URI: BOLD:AAN5659



[Lateral]
Culex quinquefasciatus
BIN URI: BOLD:AAA4751



[Lateral]
Chrysotus cilipes
BIN URI: BOLD:ACJ0835



[Lateral]
Medetera sp. SEB5
BIN URI: BOLD:ACA1124



[Lateral]
Drosophila subpulchrella
BIN URI: BOLD:AAC2499



[Lateral]
Drosophila
BIN URI: BOLD:AAG8493



[Lateral]
Clinocera binotata
BIN URI: BOLD:AAZ5295



[Lateral]
Ephydriidae
BIN URI: BOLD:AAG6932



[Lateral]
Fanniidae
BIN URI: BOLD:ABY7010



[Lateral]
Heleomyzidae
BIN URI: BOLD:AAG0459



[Lateral]
Heleomyzidae
BIN URI: BOLD:AAP2913



[Lateral]
Empididae
BIN URI: BOLD:AAF9771



[Lateral]
Platypalpus
BIN URI: BOLD:AAF9768



[Lateral]
Hybotidae
BIN URI: BOLD:ACD2976



[Lateral]
Muscidae
BIN URI: BOLD:AAG1711



[Lateral]
Muscidae
BIN URI: BOLD:ACE8833



[Lateral]
Diptera
BIN URI: BOLD:ACG5222



[Lateral]
Mycetophilidae
BIN URI: BOLD:AAG4905



[Lateral]
Mycetophilidae
BIN URI: BOLD:AAI3259



[Lateral]
Mycetophila
BIN URI: BOLD:ACJ6067



[Lateral]
Mycetophilidae
BIN URI: BOLD:ACB7566



[Lateral]
Mycetophilinae
BIN URI: BOLD:ACP8520



[Lateral]
Phoridae
BIN URI: BOLD:AAL9079



[Lateral]
Phoridae
BIN URI: BOLD:AAG3255



[Lateral]
Phoridae
BIN URI: BOLD:AAZ6701



[Lateral]
Psychodidae
BIN URI: BOLD:AAF9317



[Lateral]
Psychodidae
BIN URI: BOLD:AAF9309



[Lateral]
Psychodidae
BIN URI: BOLD:ACF6513



[Lateral]
Psychodidae
BIN URI: BOLD:AAZ5592



[Lateral]
Scathophagidae
BIN URI: BOLD:AAD0853



[Lateral]
Scatopsidae
BIN URI: BOLD:ABV3201



[Lateral]
Scatopsidae
BIN URI: BOLD:ACP9147



[Lateral]
Scatopsidae
BIN URI: BOLD:ACI9567



[Lateral]
Scatopsiara
BIN URI: BOLD:AAH6431



[Lateral]
Scatopsiara
BIN URI: BOLD:ACF4135



[Lateral]
Scatopsiara
BIN URI: BOLD:AAH3920



[Lateral]
Sciaridae
BIN URI: BOLD:AAH6465



[Lateral]
Sciaridae
BIN URI: BOLD:ABX3194



[Lateral]
Sciaridae
BIN URI: BOLD:AAH3943



[Lateral]
Sciaridae
BIN URI: BOLD:ABA6488



[Lateral]
Sciaridae
BIN URI: BOLD:AAH6447



[Lateral]
Sciaridae
BIN URI: BOLD:AAL7869



[Lateral]
Sciaridae
BIN URI: BOLD:ACP3959



[Lateral]
Themira annulipes
BIN URI: BOLD:AAZ5973



[Lateral]
Rachispoda
BIN URI: BOLD:ACP9469



[Lateral]
Tipula paludosa
BIN URI: BOLD:AAE7386



[Lateral]
Tipula cf. maritima
BIN URI: BOLD:AAF8978



[Lateral]
Trichoceridae
BIN URI: BOLD:ABY1848



[Lateral]
Physiphora demandata
BIN URI: BOLD:ABA5170



[Larva]
Baetis
BIN URI: BOLD:ACL3115



[Dorsal]
Elasmostethus cruciatus
BIN URI: BOLD:AAF5398



[Dorsal]
Orius majusculus
BIN URI: BOLD:ABA5781



[Lateral]
Capitophorus elaeagni
BIN URI: BOLD:AAE3015



[Lateral]
Eriosoma americanum
BIN URI: BOLD:AAD7955



[Dorsal]
Rhopalosiphum padi
BIN URI: BOLD:AAA9899



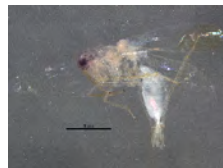
[Lateral]
Dikrella nevadensis
BIN URI: BOLD:ACN8361



[Lateral]
Empoasca decipiens
BIN URI: BOLD:AAH6741



[Lateral]
Cicadellidae
BIN URI: BOLD:ACI4024



[Lateral]
Empoasca
BIN URI: BOLD:ACP8931



[Lateral]
Fieberiella florii
BIN URI: BOLD:ACJ7053



[Lateral]
Typhlocyba
BIN URI: BOLD:ACP0606



[Lateral]
Clastoptera
BIN URI: BOLD:AAG8920



[Dorsal]
Lygus lineolaris
BIN URI: BOLD:AAA5803



[Lateral]
Boisea rubrolineata
BIN URI: BOLD:AAE0821



[Lateral]
Cotesia yakutatensis
BIN URI: BOLD:ABZ4485



[Lateral]
Dinotrema jf101
BIN URI: BOLD:AAA7636



[Lateral]
Ephedrus
BIN URI: BOLD:AAJ6811



[Lateral]
Euaphidius
BIN URI: BOLD:AAJ0884



[Lateral]
Lysiphlebus
BIN URI: BOLD:AAG1226



[Lateral]
Braconidae
BIN URI: BOLD:AAL8250



[Lateral]
Braconidae
BIN URI: BOLD:ACP7358



[Lateral]
Braconidae
BIN URI: BOLD:AAU9429



[Lateral]
Hymenoptera
BIN URI: BOLD:ACA8248



[Lateral]
Cynipidae
BIN URI: BOLD:ACG4509



[Lateral]
Diapriidae
BIN URI: BOLD:ACK2397



[Lateral]
Eulophidae
BIN URI: BOLD:ACD8255



[Lateral]
Tetrastichinae
BIN URI: BOLD:ACP8918



[Lateral]
Cynipidae
BIN URI: BOLD:AAG0774



[Lateral]
Lasius
BIN URI: BOLD:AAN5587



[Lateral]
Stenamma
BIN URI: BOLD:ACP7990



[Lateral]
Atractodes
BIN URI: BOLD:ACP7514



[Lateral]
Ichneumonidae
BIN URI: BOLD:AAH1604



[Lateral]
Diadromus subtilicornis
BIN URI: BOLD:AAZ7721



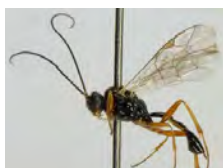
[Lateral]
Enytus apostata
BIN URI: BOLD:AAG5797



[Lateral]
Pimpla hesperus
BIN URI: BOLD:AAP6739



[Lateral]
Lissonota coracina
BIN URI: BOLD:AAA6712



[Lateral]
Mesochorus agilis
BIN URI: BOLD:AAG9511



[Lateral]
Mesochorinae
BIN URI: BOLD:AAM7412



[Lateral]
Pantisarthrus
BIN URI: BOLD:ABU9675



[Lateral]
Plectiscidea communis
BIN URI: BOLD:ABX8683



[Lateral]
Plectiscidea
BIN URI: BOLD:ACJ3206



[Lateral]
Cryptinae
BIN URI: BOLD:ACN0988



[Lateral]
Ichneumonidae
BIN URI: BOLD:AAU9739



[Lateral]
Diplazontinae
BIN URI: BOLD:ACP8913



[Lateral]
Orthocentrinae
BIN URI: BOLD:ACP7701



[Lateral]
Orthocentrinae
BIN URI: BOLD:ACJ6556



[Lateral]
Megaspilidae
BIN URI: BOLD:ACJ1417



[Lateral]



[Lateral]



[Lateral]



[Lateral]



[Lateral]



[Lateral]

[Lateral]
Gonatocerus
BIN URI: BOLD:ABX2613



[Lateral]
Platygastridae
BIN URI: BOLD:AAG7883

[Lateral]
Gonatocerus
BIN URI: BOLD:ACP9253



[Lateral]
Telenomus
BIN URI: BOLD:ACP7422

Mymaridae
BIN URI: BOLD:ACN6494



[Lateral]
Hymenoptera
BIN URI: BOLD:ACI3485

[Lateral]
Hymenoptera
BIN URI: BOLD:AAN7748



[Lateral]
Telenomus
BIN URI: BOLD:ABA6265

[Lateral]
Mymaridae
BIN URI: BOLD:ACP9674



[Lateral]
Hymenoptera
BIN URI: BOLD:AAN8093

[Lateral]
Mymaridae
BIN URI: BOLD:ACA7964



[Dorsal]
Bedellia somnulentella
BIN URI: BOLD:AAI7773



[Dorsal]
Udea profundalis
BIN URI: BOLD:ABZ0360



[Dorsal]
Phyllonorycter cf. blancardella
BIN URI: BOLD:AAC4327



[Dorsal]
Phyllonorycter mespilella
BIN URI: BOLD:AAC1755



[Dorsal]
Plutella armoraciae
BIN URI: BOLD:AAL0299



[Dorsal]
Lepidoptera
BIN URI: BOLD:AAA2650



[Dorsal]
Epinotia
BIN URI: BOLD:AAI5369



[Dorsal]
Ypsolopa rubrella
BIN URI: BOLD:AAF5804