

School Malaise Trap Program

Species Image Library

The images of the species collected in your Malaise trap are shown below. A single representative for each species was selected to be photographed; in some cases, only a damaged specimen was available.

Re-render images: per row

300 Records Per Page - Pages: 1



[Dorsal]
Parasitidae
BIN URI: BOLD: AAN6627



[Dorsal]
Phalangium opilio
BIN URI: BOLD: AAI4346



[Dorsal]
Anystidae
BIN URI: BOLD: ACA6346



[Dorsal]
Anystidae
BIN URI: BOLD: ABW2639



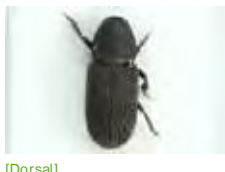
[Dorsal]
Anystidae
BIN URI: BOLD: ACE1253



[Dorsal]
Acalymma vittatum
BIN URI: BOLD: AAF4335



[Dorsal]
Psyllodes napi
BIN URI: BOLD: ABA4532



[Dorsal]
Hylastes opacus
BIN URI: BOLD: ABW1979



[Lateral]
Nudobius
BIN URI: BOLD: AAY6531



[Dorsal]
Philonthus cognatus
BIN URI: BOLD: AAL5087



[Lateral]
Leiomyza curvinervis
BIN URI: BOLD: AAX5462



[Lateral]
Cecidomyiidae
BIN URI: BOLD: ACP8666



[Lateral]
Cecidomyiidae
BIN URI: BOLD: ABA6413



[Lateral]
Cecidomyiidae
BIN URI: BOLD: AAU6598



[Lateral]
Cecidomyiidae
BIN URI: BOLD: ABA6449



[Lateral]
Cecidomyiidae
BIN URI: BOLD: ABA6426



[Lateral]
Cecidomyiidae
BIN URI: BOLD: ABA7873



[Lateral]
Cecidomyiidae
BIN URI: BOLD: ABA6412



[Lateral]
Cecidomyiidae
BIN URI: BOLD: AAV5796



[Lateral]
Cecidomyiidae
BIN URI: BOLD: AAZ5618



[Lateral]
Cecidomyiidae
BIN URI: BOLD: AAN5178



[Lateral]
Cecidomyiidae
BIN URI: BOLD: ABA6460



[Dorsal]
Ceratopogonidae
BIN URI: BOLD: AAN5162



[Lateral]
Chamaemyiidae
BIN URI: BOLD: ACC5514



[Lateral]
Bryophaenocladus sp. 8ES
BIN URI: BOLD: AAG1021



[Lateral]
Chironomidae
BIN URI: BOLD: AAJ4295



[Dorsal]
Chironomidae
BIN URI: BOLD: AAJ4275



[Lateral]
Chironomus
BIN URI: BOLD: ABV1236



[Lateral]
Cricotopus annulator cplx
BIN URI: BOLD: ABY9141



[Lateral]
Chironomidae
BIN URI: BOLD: AAN5369



[Lateral]
Chironomidae
BIN URI: BOLD:ABU5525



[Lateral]
Micropsectra subletterorum
BIN URI: BOLD:AAF7088



[Lateral]
Micropsectra polita
BIN URI: BOLD:AAC4403



[Lateral]
Paraphaenocladus impensus
BIN URI: BOLD:AAC4197



[Lateral]
Parochlus kiefferi
BIN URI: BOLD:AAC1427



[Lateral]
Chironomidae
BIN URI: BOLD:AAF4817



[Lateral]
Chironomidae
BIN URI: BOLD:AAM7064



[Lateral]
Smittia
BIN URI: BOLD:ACP7551



[Lateral]
Smittia
BIN URI: BOLD:ABA6450



[Dorsal]
Chironomidae
BIN URI: BOLD:ACP4736



[Lateral]
Chironomidae
BIN URI: BOLD:ABA6405



[Lateral]
Limnophyes
BIN URI: BOLD:ABV1190



[Lateral]
Chironomidae
BIN URI: BOLD:ACN2260



[Lateral]
Chironomidae
BIN URI: BOLD:AAN5342



[Lateral]
Chironominae
BIN URI: BOLD:ACA3275



[Lateral]
Chironomidae
BIN URI: BOLD:ACA5100



[Lateral]
Chironomidae
BIN URI: BOLD:ABA6452



[Lateral]
Chironomidae
BIN URI: BOLD:ABA6465



[Dorsal]
Chironomidae
BIN URI: BOLD:AAN5348



[Lateral]
Aedes vexans
BIN URI: BOLD:AAV7067



[Lateral]
Culicidae
BIN URI: BOLD:AAB6943



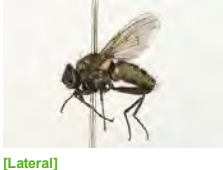
[Lateral]
Drosophila neotestacea
BIN URI: BOLD:AAC7070



[Lateral]
Hybotidae
BIN URI: BOLD:AAN5501



[Lateral]
Erioptera septemtrionis
BIN URI: BOLD:AAF9055



[Lateral]
Helina reversio
BIN URI: BOLD:AAD0642



[Lateral]
Muscidae
BIN URI: BOLD:AAG1717



[Lateral]
Mycetophilidae
BIN URI: BOLD:ACG5774



[Lateral]
Mycetophilidae
BIN URI: BOLD:AAN8584



[Lateral]
Mycetophilidae
BIN URI: BOLD:ACI8785



[Lateral]
Phoridae
BIN URI: BOLD:ABU5529



[Lateral]
Phoridae
BIN URI: BOLD:ACE1685



[Lateral]
Phoridae
BIN URI: BOLD:AAG3316



[Lateral]
Phoridae
BIN URI: BOLD:ABV3314



[Lateral]
Phoridae
BIN URI: BOLD:AAN8700



[Lateral]
Phoridae
BIN URI: BOLD:AAM7996



[Lateral]
Psychodidae
BIN URI: BOLD:AAF9314



[Lateral]
Psychodidae
BIN URI: BOLD:AAF9317



[Lateral]
Bradysia difformis
BIN URI: BOLD:AAV1295



[Lateral]
Sciaridae
BIN URI: BOLD:ACM6005



[Lateral]
Sciaridae
BIN URI: BOLD:AAH3939



[Lateral]
Sciaridae
BIN URI: BOLD:AAM9243



[Lateral]
Sciaridae
BIN URI: BOLD:AAM9242



[Lateral]
Lycoriella
BIN URI: BOLD:ACM4797



[Lateral]
Scatopsiara
BIN URI: BOLD:AAH3920



[Lateral]
Sciaridae
BIN URI: BOLD:AAN6446



[Lateral]
Sciaridae
BIN URI: BOLD:AAH3942



[Lateral]
Sciaridae
BIN URI: BOLD:AAH3918



[Lateral]
Sciaridae
BIN URI: BOLD:ACF8967



[Lateral]
Sciaridae
BIN URI: BOLD:AAM9235



[Lateral]
Sciaridae
BIN URI: BOLD:AAV1261



[Lateral]
Sciaridae
BIN URI: BOLD:ACE3123



[Lateral]
Sciaridae
BIN URI: BOLD:AAM9225



[Lateral]
Sciaridae
BIN URI: BOLD:ABA6407



[Lateral]
Sciaridae
BIN URI: BOLD:AAN6444



[Lateral]
Sciaridae
BIN URI: BOLD:AAP6465



[Lateral]
Simulium decorum
BIN URI: BOLD:AAB7749



[Lateral]
Sphaeroceridae
BIN URI: BOLD:AAG7275



[Lateral]
Aphididae
BIN URI: BOLD:AAB9332



[Dorsal]
Rhopalosiphum padi
BIN URI: BOLD:AAA9899



[Lateral]
Typhlocyba
BIN URI: BOLD:ABA5828



[Dorsal]
Cicadellidae
BIN URI: BOLD:ACP8819



[Dorsal]
Lygus lineolaris
BIN URI: BOLD:AAA5803



[Lateral]
Nabis americoferus
BIN URI: BOLD:AAB8143



[Lateral]
Aleiodes
BIN URI: BOLD:ACF1641



[Lateral]
Hymenoptera
BIN URI: BOLD:ACD1926



[Lateral]
Braconidae
BIN URI: BOLD:AAU9433



[Lateral]
Hormius
BIN URI: BOLD:ACC4201



[Lateral]
Aphidiinae
BIN URI: BOLD:AAM7497



[Lateral]
Braconidae
BIN URI: BOLD:AAG1352



[Lateral]
Eulophidae
BIN URI: BOLD:ABX9553



[Lateral]
Eulophidae
BIN URI: BOLD:AAZ3291



[Lateral]
Lasius
BIN URI: BOLD:AAB9126



[Lateral]
Formicidae
BIN URI: BOLD:AAI1292



[Lateral]
Lasius
BIN URI: BOLD:ABZ0423



[Lateral]
Lasius
BIN URI: BOLD:ABY9254



[Lateral]
Lasius flavus
BIN URI: BOLD:ABY6333



[Lateral]
Formicidae
BIN URI: BOLD:ACF3947



[Lateral]
Myrmica AF-smi
BIN URI: BOLD:AAA1840



[Lateral]
Campoletis flavicincta
BIN URI: BOLD:AAN7740



[Lateral]
Hymenoptera
BIN URI: BOLD:AAM7494



[Lateral]
Stenomacrus
BIN URI: BOLD:AAH1490



[Lateral]
Hymenoptera
BIN URI: BOLD:AAP6689



[Lateral]
Ichneumoninae
BIN URI: BOLD:AAH7265



[Lateral]
Mymaridae
BIN URI: BOLD:ABV9379



[Lateral]
Myrmaridae
BIN URI: BOLD:AAZ0173



[Lateral]
Synopeas
BIN URI: BOLD:ACP8802



[Lateral]
Hymenoptera
BIN URI: BOLD:ACP7647



[Lateral]
Platygasteridae
BIN URI: BOLD:ACE3998



[Lateral]
Platygasteridae
BIN URI: BOLD:ACL4258



[Lateral]
Platygasteridae
BIN URI: BOLD:AAG8368



[Lateral]
Platygasteridae
BIN URI: BOLD:ABX2598



[Lateral]
Platygasteridae
BIN URI: BOLD:ACC0993



[Lateral]
Platygasteridae
BIN URI: BOLD:AAU9273



[Lateral]
Telenomus
BIN URI: BOLD:AAU9340



[Lateral]
Scelioninae
BIN URI: BOLD:ABA6154



[Lateral]
Trichogramma sp.
BIN URI: BOLD:ACE9876



[Dorsal]
Acrolepiopsis assectella
BIN URI: BOLD:AAB4903



[Dorsal]
Epinotia radicana
BIN URI: BOLD:AAA9458



[Lateral]
Chrysoperla rufilabris
BIN URI: BOLD:ACC7133



[Lateral]
Valenzuela burmeisteri
BIN URI: BOLD:AAO4092



[Lateral]
Psocoptera
BIN URI: BOLD:AAF1729



[Lateral]
Limnephilus submonilifer
BIN URI: BOLD:AAA3080