

School Malaise Trap Program

Species Image Library

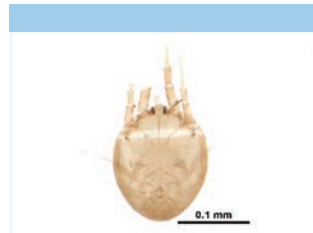
The images of the species collected in your Malaise trap are shown below. A single representative from each species was selected to be photographed; in some cases, only a damaged specimen was available.



[Dorsal]
Agelenopsis potteri
BIN URI: BOLD: AAB5726



[Dorsal]
Grammonota gentilis
BIN URI: BOLD: AAA9476



[Dorsal]
Arachnida
BIN URI: BOLD: ACX7713



[Lateral]
Entomobrya nivalis
BIN URI: BOLD: AAA8924



[Lateral]
Bourletiella
BIN URI: BOLD: ACC0359



[Dorsal]
Disonycha procera
BIN URI: BOLD: AAG4454



[Dorsal]
Corticarina
BIN URI: BOLD: AAH0256



[Lateral]
Philonthus flavibasis
BIN URI: BOLD: AAH0106



[Lateral]
Cecidomyiidae
BIN URI: BOLD: ACX8713



[Lateral]
Cecidomyiidae
BIN URI: BOLD: ACP9392



[Lateral]
Cecidomyiidae
BIN URI: BOLD: ACN9922



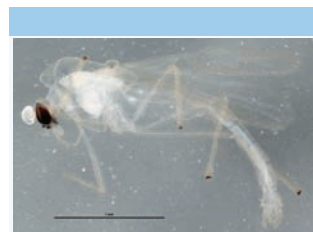
[Lateral]
Atrichopogon
BIN URI: BOLD: AAG6431



[Lateral]
Cricotopus
BIN URI: BOLD: AAA5299



[Lateral]
Metriocnemus
BIN URI: BOLD: ACA7887



[Lateral]
Tanytarsus
BIN URI: BOLD: ACX5994



[Lateral]
Tanytarsus
BIN URI: BOLD: AAH2254



[Lateral]
Tanytarsus mendax
BIN URI: BOLD: ACX4575



[Lateral]
Philotelma
BIN URI: BOLD: AAL8953



[Lateral]
Psilopa leucostoma
BIN URI: BOLD: ABU5754



[Lateral]
Psilopa nigrifella
BIN URI: BOLD: ABA0762



[Lateral]
Helina evecta
BIN URI: BOLD: AAC2498



[Lateral]
Mycetophilidae
BIN URI: BOLD: ABU5545



[Lateral]
Exechia
BIN URI: BOLD: ACD9501



[Lateral]
Phoridae
BIN URI: BOLD: AAL9075



[Lateral]
Phoridae
BIN URI: BOLD: ACX6055



[Lateral]
Megaselia
BIN URI: BOLD: AAG3266



[Lateral]
Megaselia
BIN URI: BOLD: AAU5622



[Lateral]
Phoridae
BIN URI: BOLD: AAM9349



[Lateral]
Phoridae
BIN URI: BOLD: AAG3312



[Lateral]
Phoridae
BIN URI: BOLD: ACX4087



[Lateral]
Psychodidae
BIN URI: BOLD: AAG3154



[Lateral]
Psychodidae
BIN URI: BOLD: AAO8538



[Lateral]
Sciaridae
BIN URI: BOLD: ABA6488



[Lateral]
Sciaridae
BIN URI: BOLD: AAP9903



[Lateral]
Lycoriella
BIN URI: BOLD: AAL7869



[Lateral]
Scatopsiara atomaria
BIN URI: BOLD: AAH3920



[Lateral]
Sciariidae
BIN URI: BOLD:ACV1390



[Lateral]
Sciariidae
BIN URI: BOLD:ACX8254



[Lateral]
Sciariidae
BIN URI: BOLD:ACL9275



[Lateral]
Sciariidae
BIN URI: BOLD:AAM9255



[Lateral]
Sciariidae
BIN URI: BOLD:ACD1220



[Lateral]
Sciariidae
BIN URI: BOLD:AAP6465



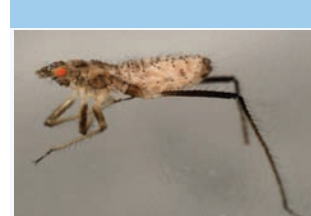
[Lateral]
Limosinae
BIN URI: BOLD:ACG0715



[Dorsal]
Chaetosiphon fragaefolii
BIN URI: BOLD:AAD3961



[Lateral]
Eulachnus agilis
BIN URI: BOLD:ACF4455



[Lateral]
Eulachnus rileyi
BIN URI: BOLD:AAC6347



[Dorsal]
Metopolophium dirhodum
BIN URI: BOLD:AAE7796



[Lateral]
Myzus cerasi
BIN URI: BOLD:AAB2802



[Dorsal]
Rhopalosiphum cerasifoliae
BIN URI: BOLD:AAB5408



[Dorsal]
Therioaphis tenera tenera
BIN URI: BOLD:AAE2871



[Lateral]
Forcipata loca
BIN URI: BOLD:ACC8165



[Lateral]
Aphalarinae
BIN URI: BOLD:ABW7690



[Lateral]
Aphidius
BIN URI: BOLD:ACF4786



[Lateral]
Praon gallicum
BIN URI: BOLD:AAF0448



[Lateral]
Blacinae
BIN URI: BOLD:AAU8584



[Lateral]
Braconidae
BIN URI: BOLD:ACM9884



[Lateral]
Euphorinae
BIN URI: BOLD:ACP8405



[Lateral]
Hymenoptera
BIN URI: BOLD:AAU8345



[Lateral]
Aprostocetus
BIN URI: BOLD:ACX7809



[Lateral]
Hymenoptera
BIN URI: BOLD:AAU8218



[Lateral]
Hymenoptera
BIN URI: BOLD:AAP6689



[Lateral]
Hymenoptera
BIN URI: BOLD:ABY3391



[Lateral]
Gonatocerus
BIN URI: BOLD:ABV2681



[Lateral]
Telenomus
BIN URI: BOLD:ABA5957



[Lateral]
Telenomus
BIN URI: BOLD:AAG7892



[Lateral]
Platygastridae
BIN URI: BOLD:ABA5945



[Lateral]
Platygastridae
BIN URI: BOLD:ACD3196



[Lateral]
Platygastridae
BIN URI: BOLD:ACC5761



[Lateral]
Pteromalus
BIN URI: BOLD:AAN8215



[Lateral]
Pteromalidae
BIN URI: BOLD:ACI2977



[Lateral]
Pteromalidae
BIN URI: BOLD:ACX7989



[Lateral]
Pteromalidae
BIN URI: BOLD:ACX8885



[Lateral]
Pteromalidae
BIN URI: BOLD:ACY2833



[Dorsal]
Bucculatrix pomifoliella
BIN URI: BOLD:AAD2085



[Dorsal]
Mompha unifasciella
BIN URI: BOLD:AAC2120



[Lateral]
Micromus angulatus
BIN URI: BOLD:AAM8204