

School Malaise Trap Program

Species Image Library

The images of the species collected in your Malaise trap are shown below. A single representative from each species was selected to be photographed; in some cases, only a damaged specimen was available.



[Dorsal]
Lathys humilis
BIN URI: BOLD:AAU0840



[Dorsal]
Erigone aletris
BIN URI: BOLD:AAD1746



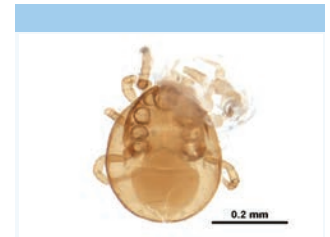
[Dorsal]
Tibellus maritimus
BIN URI: BOLD:AAA7188



[Dorsal]
Xysticus audax
BIN URI: BOLD:AAP2437



[Dorsal]
Phytoseiidae
BIN URI: BOLD:ACY2204



[Dorsal]
Phytoseiidae
BIN URI: BOLD:ACY3060



[Dorsal]
Entomobryidae
BIN URI: BOLD:AAA8820



[Dorsal]
Collembola
BIN URI: BOLD:AAN4907



[Dorsal]
Bourletiellidae
BIN URI: BOLD:AAN4906



[Dorsal]
Anthicus cervinus
BIN URI: BOLD:AAH2753



[Dorsal]
Amara aenea
BIN URI: BOLD:AAC4902



[Dorsal]
Stethorus punctillum
BIN URI: BOLD:AAN6149



[Lateral]
Tychius picirostris
BIN URI: BOLD:AAP7027



[Lateral]
Xyleborinus saxeseni
BIN URI: BOLD:AAB9577



[Dorsal]
Agriotes lineatus
BIN URI: BOLD:AAL6108



[Dorsal]
Cartodere bifasciata
BIN URI: BOLD:AAW4095



[Dorsal]
Tachyporus
BIN URI: BOLD:AAM9619



[Lateral]
Agromyzidae
BIN URI: BOLD:AAU9505



[Lateral]
Agromyzidae
BIN URI: BOLD:AAP6787



[Lateral]
Anthomyiidae
BIN URI: BOLD:AAG2462



[Lateral]
Asteromyia
BIN URI: BOLD:AAV5552



[Lateral]
Cecidomyiidae
BIN URI: BOLD:ABV1475



[Lateral]
Dasyhelea
BIN URI: BOLD:AAN5161



[Lateral]
Chironomus matorus
BIN URI: BOLD:AAB4657



[Lateral]
Limnophyes minimus
BIN URI: BOLD:AAA8204



[Lateral]
Limnophyes sp. 14ES
BIN URI: BOLD:ABU5525



[Lateral]
Smittia sp. 8ES
BIN URI: BOLD:ACP4736



[Lateral]
Chironomidae
BIN URI: BOLD:AAG1019



[Lateral]
Diptera
BIN URI: BOLD:ACI3270



[Lateral]
Medetera sp. SEB5
BIN URI: BOLD:ACA1124



[Lateral]
Drosophilidae
BIN URI: BOLD:AAA1831



[Lateral]
Drosophila
BIN URI: BOLD:AAG8493



[Lateral]
Suillia limbata
BIN URI: BOLD:AAP8074



[Lateral]
Suillia
BIN URI: BOLD:AAG0459



[Lateral]
Coenosia tigrina
BIN URI: BOLD:AAB5609



[Lateral]
Phaonia tuguriorum
BIN URI: BOLD:AAL2750



[Lateral]
Phoridae
BIN URI: BOLD: AAN8691



[Lateral]
Sarcophagidae
BIN URI: BOLD: AAH7157



[Lateral]
Scathophaga furcata
BIN URI: BOLD: ACX4405



[Lateral]
Sciaridae
BIN URI: BOLD: ACR4350



[Lateral]
Clausropyga
BIN URI: BOLD: ACY3133



[Lateral]
Corynoptera vagula
BIN URI: BOLD: ABA6422



[Lateral]
Sciaridae
BIN URI: BOLD: AAN6453



[Lateral]
Sciaridae
BIN URI: BOLD: ACB9102



[Lateral]
Sciaridae
BIN URI: BOLD: ACU6093



[Lateral]
Sciaridae
BIN URI: BOLD: ACP3959



[Lateral]
Sciaridae
BIN URI: BOLD: ACS7610



[Lateral]
Sciaridae
BIN URI: BOLD: ACY3132



[Lateral]
Sciaridae
BIN URI: BOLD: ACP7943



[Lateral]
Sargus bipunctatus
BIN URI: BOLD: ACI9008



[Lateral]
Compsilura concinnata
BIN URI: BOLD: ACX8696



[Lateral]
Tipulidae
BIN URI: BOLD: AAF9041



[Lateral]
Tipula paludosa
BIN URI: BOLD: AAE7386



[Lateral]
Trichoceridae
BIN URI: BOLD: ABY1848



[Dorsal]
Temnostethus pusillus
BIN URI: BOLD: ABV4558



[Lateral]
Neophilaenus lineatus
BIN URI: BOLD: AAG5648



[Lateral]
Empoasca decipiens
BIN URI: BOLD: AAY6741



[Lateral]
Empoasca
BIN URI: BOLD: ACI4025



[Lateral]
Empoasca
BIN URI: BOLD: AAN8406



[Lateral]
Empoasca
BIN URI: BOLD: ACC4174



[Dorsal]
Ribautiana debilis
BIN URI: BOLD: ACC4476



[Lateral]
Typhlocyba
BIN URI: BOLD: ABA5828



[Lateral]
Aphidius
BIN URI: BOLD: ACF4786



[Lateral]
Dinotrema
BIN URI: BOLD: ACP4606



[Lateral]
Dinotrema
BIN URI: BOLD: AAU8379



[Lateral]
Hymenoptera
BIN URI: BOLD: AAU8585



[Lateral]
Alysiinae
BIN URI: BOLD: AAQ2937



[adult]
Trichopria
BIN URI: BOLD: ACR1931



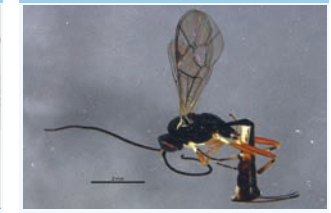
[Lateral]
Hymenoptera
BIN URI: BOLD: AAM7487



[Lateral]
Diapriidae
BIN URI: BOLD: ACJ5673



[Lateral]
Lasius niger
BIN URI: BOLD: ABZ8330



[Lateral]
Diadegma
BIN URI: BOLD: ACP9048



[Lateral]
Hymenoptera
BIN URI: BOLD: AAD4214



[Lateral]
Exochus pictus
BIN URI: BOLD: AAU9095



[Lateral]
Mymaridae
BIN URI: BOLD: ACJ0052



[Lateral]
Synopeas
BIN URI: BOLD: AAU8571



[Lateral]
Platygastridae
BIN URI: BOLD: AAG7886



[Lateral]
Platygastrinae
BIN URI: BOLD: ACD3193



[Lateral]
Vespula pensylvanica
BIN URI: BOLD: AAG8042



[Lateral]
Hymenoptera
BIN URI: BOLD: ACX8146



[Dorsal]
Noctua pronuba
BIN URI: BOLD: AAA2632



[Lateral]
Psocoptera
BIN URI: BOLD: AAN8452



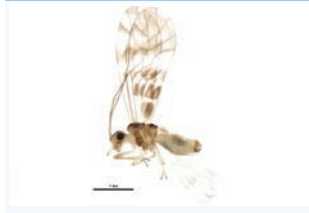
[Lateral]
Psocoptera
BIN URI: BOLD: AAY6680



[Dorsal]
Psocoptera
BIN URI: BOLD: AAY6687



[Lateral]
Lachesillidae



[Lateral]
Graphopsocus cruciatus



[Lateral]
Limnophilus nogus

