

# School Malaise Trap Program

## Species Image Library

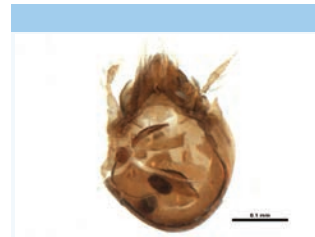
The images of the species collected in your Malaise trap are shown below. A single representative from each species was selected to be photographed; in some cases, only a damaged specimen was available.



[Dorsal]  
*Clubiona obesa*  
BIN URI: BOLD:AAD5417



[Dorsal]  
*Drapetisca alteranda*  
BIN URI: BOLD:AAH7066



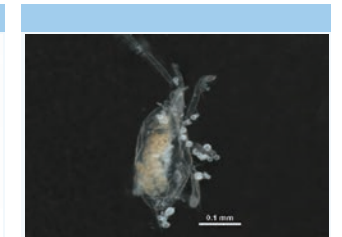
[Dorsal]  
*Oribatella*  
BIN URI: BOLD:ACL0546



[Dorsal]  
Anystidae  
BIN URI: BOLD:AAN6612



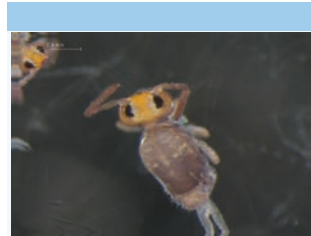
[Dorsal]  
Erythraeidae  
BIN URI: BOLD:ABW2691



[Dorsal]  
Eupodidae  
BIN URI: BOLD:ACV5912



[Lateral]  
*Lepidocyrtus*  
BIN URI: BOLD:ACM2009



[Dorsal]  
*Deuterostminthurus* sp1  
BIN URI: BOLD:AAB7915



[Dorsal]  
Coccinellidae  
BIN URI: BOLD:AAB5640



[Dorsal]  
*Cryptophagus*  
BIN URI: BOLD:ABA9954



[Lateral]  
*Conotrachelus juglandis*  
BIN URI: BOLD:ACA6003



[Dorsal]  
*Conotrachelus*  
BIN URI: BOLD:ACY3454



[Lateral]  
Leioididae  
BIN URI: BOLD:ABW2818



[Dorsal]  
*Cyphon variabilis*  
BIN URI: BOLD:ACX4619



[Lateral]  
*Anthomyia plurinotata*  
BIN URI: BOLD:AAG1708



[Lateral]  
Cecidomyiidae  
BIN URI: BOLD:ACV0100



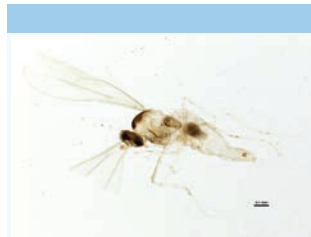
[Lateral]  
Cecidomyiidae  
BIN URI: BOLD:ACX8904



[Lateral]  
Cecidomyiidae  
BIN URI: BOLD:AAN5268



[Lateral]  
Cecidomyiidae  
BIN URI: BOLD:AAG3624



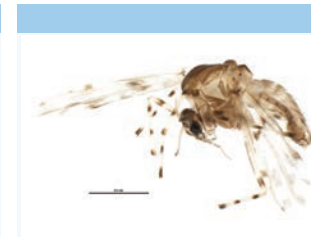
[Lateral]  
Cecidomyiidae  
BIN URI: BOLD:ABW8054



[Lateral]  
Cecidomyiidae  
BIN URI: BOLD:AAA1259



[Lateral]  
*Forcipomyia*  
BIN URI: BOLD:AAV5088



[Lateral]  
*Ablabesmyia americana*  
BIN URI: BOLD:AAC8567



[Lateral]  
*Cricotopus*  
BIN URI: BOLD:ABY9141



[Lateral]  
*Micropsectra subletteorum*  
BIN URI: BOLD:AAF7088



[Lateral]  
*Micropsectra xantha*  
BIN URI: BOLD:ABU8327



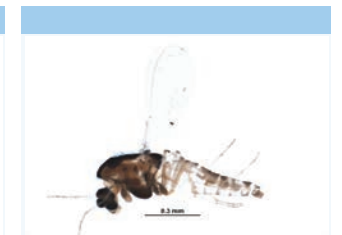
[Lateral]  
*Paraphaenocladus impensus*  
BIN URI: BOLD:AAC4197



[Lateral]  
*Procladius denticulatus*  
BIN URI: BOLD:AAF6798



[Lateral]  
Chironomidae  
BIN URI: BOLD:AAG5513



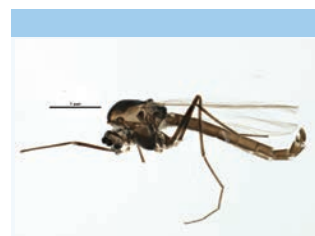
[Lateral]  
Orthocladiinae  
BIN URI: BOLD:ACM0406



[Lateral]  
Orthocladiinae  
BIN URI: BOLD:ACL9099



[Lateral]  
Chironomidae  
BIN URI: BOLD:ACK4694



[Lateral]  
Chironomidae  
BIN URI: BOLD:ACA2954



[Lateral]  
Drosophilidae  
BIN URI: BOLD:AAE2703



[Lateral]  
Fanniidae  
BIN URI: BOLD:AAG4620



[Lateral]  
*Homoneura*  
BIN URI: BOLD:ACY2276



[Lateral]  
*Coenosia tigrina*  
BIN URI: BOLD:AAB5609



[Lateral]  
*Helina depuncta*  
BIN URI: BOLD:AAG1711



[Lateral]  
*Mesembriina latreillii*  
BIN URI: BOLD:AAG1700



[Lateral]  
*Mydaea detrita*  
BIN URI: BOLD:AAG1715



[Lateral]  
Mycetophilidae  
BIN URI: BOLD:ABV9015



[Lateral]  
Mycetophilidae  
BIN URI: BOLD:ABU5545



[Lateral]  
Phoridae  
BIN URI: BOLD:ACX6055



[Lateral]  
Megaselia  
BIN URI: BOLD:AAG3336



[Lateral]  
Megaselia  
BIN URI: BOLD:AAG3266



[Lateral]  
Phoridae  
BIN URI: BOLD:AAM7996



[Lateral]  
Phoridae  
BIN URI: BOLD:AAG3255



[Lateral]  
Phoridae  
BIN URI: BOLD:AAU5642



[Lateral]  
Psychodidae  
BIN URI: BOLD:ABV1314



[Lateral]  
Psychodidae  
BIN URI: BOLD:AAE5173



[Lateral]  
Sciaridae  
BIN URI: BOLD:ABA6471



[Lateral]  
Bradysia vagans  
BIN URI: BOLD:AAM9252



[Lateral]  
Sciaridae  
BIN URI: BOLD:AAV1261



[Lateral]  
Bradysia  
BIN URI: BOLD:AAV1295



[Lateral]  
Sciaridae  
BIN URI: BOLD:AAU6513



[Lateral]  
Sciaridae  
BIN URI: BOLD:AAH6447



[Lateral]  
Lycoriella  
BIN URI: BOLD:AAL7869



[Lateral]  
Sciaridae  
BIN URI: BOLD:ACU5840



[Lateral]  
Sciaridae  
BIN URI: BOLD:ABW1417



[Lateral]  
*Sargus decorus*  
BIN URI: BOLD:AAG3694



[Lateral]  
*Sericomyia chrysotoxoides*  
BIN URI: BOLD:ABX5395



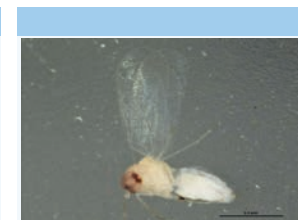
[Lateral]  
Tachinidae  
BIN URI: BOLD:AAG2366



[Lateral]  
*Eutrichota lipsia*  
BIN URI: BOLD:AAF4234



[Lateral]  
Aleyrodidae  
BIN URI: BOLD:AAZ8501



[Lateral]  
Aleyrodidae  
BIN URI: BOLD:AAZ8499



[Dorsal]  
*Xylocoris galactinus*  
BIN URI: BOLD:AAH6750



[Dorsal]  
*Myzocallis ephemerata*  
BIN URI: BOLD:AAH3763



[Dorsal]  
*Myzocallis walshii*  
BIN URI: BOLD:AAH2862



[Dorsal]  
Stegophylla  
BIN URI: BOLD:ACC0291



[Dorsal]  
Aphididae  
BIN URI: BOLD:ACX8288



[Dorsal]  
*Ceratagallia sanguinolenta*  
BIN URI: BOLD:ACF6995



[Dorsal]  
Empoasca  
BIN URI: BOLD:AAG8850



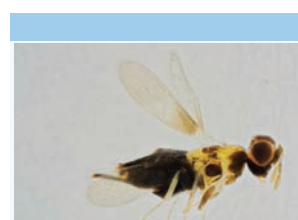
[Dorsal]  
*Nysius niger*  
BIN URI: BOLD:AAE6011



[Lateral]  
*Zelus luridus*  
BIN URI: BOLD:AAG2724



[Lateral]  
Aphelinus  
BIN URI: BOLD:ABW3282



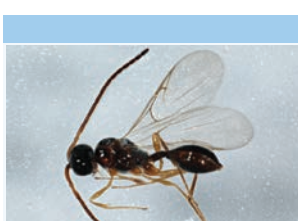
[adult]  
Centrodora  
BIN URI: BOLD:ACI7773



[Lateral]  
Aleiodes  
BIN URI: BOLD:AAU8556



[Lateral]  
Blacinae  
BIN URI: BOLD:AAU8584



[Lateral]  
Diapriidae  
BIN URI: BOLD:AAH8200



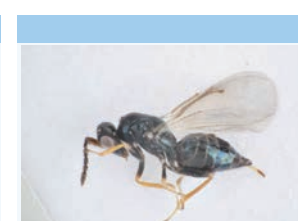
[Lateral]  
Hymenoptera  
BIN URI: BOLD:AAM7487



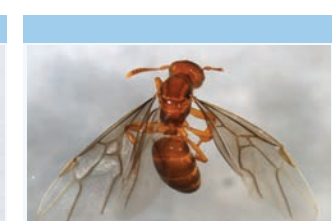
[Lateral]  
Eulophidae  
BIN URI: BOLD:ACJ6831



[Lateral]  
Eulophidae  
BIN URI: BOLD:ACX8223



[adult]  
Oomyzus  
BIN URI: BOLD:ABX9553



[Dorsal]  
Lasius  
BIN URI: BOLD:AAF0890



[Lateral]  
*Myrmica americana*



[Lateral]  
Myrmica



[Lateral]  
Megaspilidae



[Lateral]  
Anagrus



[Lateral]  
Mymaridae



[Lateral]  
Mymaridae

BIN URI: BOLD:AAA1839



[Lateral]

Mymaridae  
BIN URI: BOLD:ABW3187

BIN URI: BOLD:ABZ0938



[Lateral]

Telenomus  
BIN URI: BOLD:ABA6265

BIN URI: BOLD:ACJ1469



[Lateral]

Telenomus  
BIN URI: BOLD:ACX2708

BIN URI: BOLD:AAN8044



[Lateral]

Telenomus  
BIN URI: BOLD:AAN8025

BIN URI: BOLD:AAZ0173



[Lateral]

Telenomus  
BIN URI: BOLD:AAZ9194

BIN URI: BOLD:ACX7730



[Lateral]

Telenomus  
BIN URI: BOLD:AAU9338



[Lateral]

Telenomus  
BIN URI: BOLD:AAN8030



[Lateral]

Pteromalidae  
BIN URI: BOLD:AAN6640



[Lateral]

Vespa germanica  
BIN URI: BOLD:AAG9055



[Dorsal]

Chionodes thoraceochrella  
BIN URI: BOLD:AAA4438



[Lateral]

Valenzuela flavidus  
BIN URI: BOLD:AAH3228



[Lateral]

Lachesillidae  
BIN URI: BOLD:AAF1729



[Lateral]

Peripsocus subfasciatus  
BIN URI: BOLD:AAN8450



[Lateral]

Neophylax concinnus  
BIN URI: BOLD:AAC3072