

School Malaise Trap Program

Species Image Library

The images of the species collected in your Malaise trap are shown below. A single representative for each species was selected to be photographed; in some cases, only a damaged specimen was available.

Re-render images: per row

300 Records Per Page - Pages: 1



[Dorsal]
Cheiracanthium mildei
BIN URI: BOLD: AAB7601

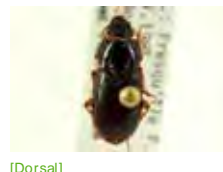


[Dorsal]
Anystidae
BIN URI: BOLD: ABW5642



IMAGE NOT AVAILABLE

Anystidae
BIN URI: BOLD: ACP9409



[Dorsal]
Harpalus herbivagus
BIN URI: BOLD: AAC1928



[Lateral]
Stenolophus conjunctus
BIN URI: BOLD: AAE9008



[Lateral]
Dibolia borealis
BIN URI: BOLD: AAL0908



[Dorsal]
Psyllodes napi
BIN URI: BOLD: ABA4532



[Dorsal]
Coleomegilla maculata lengi
BIN URI: BOLD: AAD7604



[Dorsal]
Psyllobora vigintimaculata
BIN URI: BOLD: AAH3320



[Dorsal]
Sitona hispidulus
BIN URI: BOLD: AAH0130



[Dorsal]
Erotylidae
BIN URI: BOLD: ABA6320



[Lateral]
Corticaria
BIN URI: BOLD: AAN6154



[Dorsal]
Corticarina
BIN URI: BOLD: AAH0256



[Lateral]
Plomaphagus medius
BIN URI: BOLD: AAU6931



[Lateral]
Cyphon obscurus
BIN URI: BOLD: AAH0074



[Dorsal]
Cyphon laevipennis
BIN URI: BOLD: AAG3633



[Dorsal]
Philonthus carbonarius
BIN URI: BOLD: AAR1764



[Dorsal]
Tachinus jocosus
BIN URI: BOLD: ACC9422



[Dorsal]
Tachyporus atriceps
BIN URI: BOLD: ABX2484



[Dorsal]
Trixagus carnicollis
BIN URI: BOLD: AAN6148



[Dorsal]
Forficula auricularia-A
BIN URI: BOLD: AAG9897



[Lateral]
Anthomyiidae
BIN URI: BOLD: AAG2460



[Lateral]
Anthomyiidae
BIN URI: BOLD: AAF4234



[Lateral]
Anthomyiidae
BIN URI: BOLD: AAN5497



[Lateral]
Diptera
BIN URI: BOLD: AAA6618



[Lateral]
Pollenia labialis
BIN URI: BOLD: AAJ2765



[Lateral]
Diptera
BIN URI: BOLD: AAG6745



[Dorsal]
Cecidomyiidae
BIN URI: BOLD: AAP9022



[Lateral]
Chironomidae
BIN URI: BOLD: AAN5369



[Lateral]
Krenopelopia
BIN URI: BOLD: AAC9199



[Lateral]
Polypedilum convictum
BIN URI: BOLD:AAD1395



[Lateral]
Chironomidae
BIN URI: BOLD:AA5342



[Lateral]
Chironomidae
BIN URI: BOLD:AA5356



[Dorsal]
Chironomidae
BIN URI: BOLD:AA5348



[Lateral]
Chloropidae
BIN URI: BOLD:ABV0266



[Lateral]
Dolichopodidae
BIN URI: BOLD:AAG9657



[Lateral]
Coenosia tigrina
BIN URI: BOLD:AAB5609



[Lateral]
Muscidae
BIN URI: BOLD:AAG1711



[Lateral]
Muscina levida
BIN URI: BOLD:AAB8817



[Lateral]
Phaonia tuguriorum
BIN URI: BOLD:AAL2750



[Lateral]
Muscidae
BIN URI: BOLD:AAG1715



[Lateral]
Mycetophilidae
BIN URI: BOLD:AA98348



[Lateral]
Phoridae
BIN URI: BOLD:AAG3236



[Lateral]
Phoridae
BIN URI: BOLD:AAG3342



[Lateral]
Sarcophaga caerulescens
BIN URI: BOLD:AAH0008



[Lateral]
Diptera
BIN URI: BOLD:AAG6743



[Lateral]
Sarcophagidae
BIN URI: BOLD:AAG3629



[Lateral]
Sciaridae
BIN URI: BOLD:ABA6407



[Lateral]
Sciaridae
BIN URI: BOLD:ABX3194



[Lateral]
Sciaridae
BIN URI: BOLD:AA6447



[Lateral]
Simulium
BIN URI: BOLD:ACP8859



[Lateral]
Syrphidae
BIN URI: BOLD:AAB2384



[Lateral]
Ptilodexia conjuncta
BIN URI: BOLD:AAG2147



[Lateral]
Tipula paludosa
BIN URI: BOLD:AAE7386



[Lateral]
Aphis glycines
BIN URI: BOLD:AAB7938



[Lateral]
Nearctaphis crataegifoliae
BIN URI: BOLD:ACF1270



[Dorsal]
Rhopalosiphum padi
BIN URI: BOLD:AAA9899



[Lateral]
Anocinae
BIN URI: BOLD:ACJ3864



[Lateral]
Ceratagalla sanguinolenta
BIN URI: BOLD:AAG2674



[Lateral]
Dikraneura
BIN URI: BOLD:AAO8324



[Dorsal]
Empoasca
BIN URI: BOLD:AAV0166



[Lateral]
Empoasca
BIN URI: BOLD:ABA5771



[Lateral]
Empoasca
BIN URI: BOLD:AAV0165



[Lateral]
Erythroneura tricincta
BIN URI: BOLD:AA9738



[Dorsal]
Erythroneura tricincta
BIN URI: BOLD:AA9751



[Lateral]
Erythroneura vitifex
BIN URI: BOLD:AA9742



[Lateral]
Forcipata loca
BIN URI: BOLD:ACC8165



[Lateral]
Macrosteles quadrilineatus
BIN URI: BOLD:AAA9422



[Lateral]
Orientus ishidae
BIN URI: BOLD:ABX2622



[Lateral]
Hemiptera
BIN URI: BOLD:AAG2898



[Dorsal]
Typhlocyba
BIN URI: BOLD:ACJ7184



[Dorsal]
Lygus lineolaris
BIN URI: BOLD:AAA5803



[Lateral]
Apanteles ensiger
BIN URI: BOLD:ACE6783



[Lateral]
Aphidius
BIN URI: BOLD:ACF4786



[Lateral]
Hypomicrogaster jft30
BIN URI: BOLD:AAD0217



[Lateral]
Hymenoptera
BIN URI: BOLD:AAG1429



[Lateral]
Braconidae
BIN URI: BOLD:AAG1439



[Lateral]
Hymenoptera
BIN URI: BOLD:AAO2112



[Lateral]
Cynipidae
BIN URI: BOLD:ABY9652



[Lateral]
Hymenoptera
BIN URI: BOLD:AAP6708



[Lateral]
Diapriidae
BIN URI: BOLD:AAP6717



[Lateral]
Diapriidae
BIN URI: BOLD:AAU8712



[Lateral]
Hymenoptera
BIN URI: BOLD:AAU8345



[Lateral]
Diapriidae
BIN URI: BOLD:AAU8449



[Dorsal]
Formicidae
BIN URI: BOLD:AAF0890



[Lateral]
Lasius
BIN URI: BOLD:AAB9126



[Lateral]
Lasius
BIN URI: BOLD:ABY9254



[Lateral]
Lasius nearcticus
BIN URI: BOLD:AAD1528



[Lateral]
Lasius
BIN URI: BOLD:ABZ0423



[Lateral]
Myrmica americana
BIN URI: BOLD:AAA1839



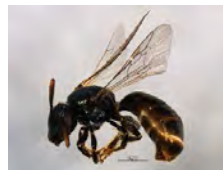
[Lateral]
Ponera pennsylvanica
BIN URI: BOLD:AAF0443



[Lateral]
Prenolepis imparis
BIN URI: BOLD:AAC1302



[Lateral]
Halictinae
BIN URI: BOLD:AAG0449



[Lateral]
Lasioglossum anomalum
BIN URI: BOLD:AAA7867



[Lateral]
Lasioglossum lineatulum
BIN URI: BOLD:AAA2141



[Lateral]
Lasioglossum pectorale
BIN URI: BOLD:AAB3614



[Lateral]
Lasioglossum imitatum
BIN URI: BOLD:AAA7868



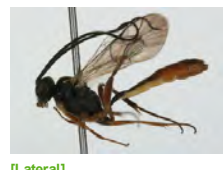
[Lateral]
Sphecodes coronus
BIN URI: BOLD:AAD5225



[Lateral]
Campoplex flavincta
BIN URI: BOLD:AAN7740



[Lateral]
Hymenoptera
BIN URI: BOLD:ABA6171



[Lateral]
Cymodusa distincta
BIN URI: BOLD:ABZ4363



[Lateral]
Hymenoptera
BIN URI: BOLD:AAD4214



[Lateral]
Lissonota coracina
BIN URI: BOLD:AAG7794



[Lateral]
Lissonota
BIN URI: BOLD:ACJ6551



[Lateral]
Hymenoptera
BIN URI: BOLD:AAG7644



[Lateral]
Hymenoptera
BIN URI: BOLD:ACE3697



[Lateral]
Orthocentrus JFT02
BIN URI: BOLD:AAU8218



[Lateral]
Hymenoptera
BIN URI: BOLD:AAB0892



[Lateral]
Scambus
BIN URI: BOLD:ACP9166



[Lateral]
Sinophorus
BIN URI: BOLD:ABZ8281



[Lateral]
Cryptinae sp. MAS BIN84
BIN URI: BOLD:AAE9438



[Lateral]
Ichneumonidae
BIN URI: BOLD:AAG7714



[Lateral]
Ichneumonidae
BIN URI: BOLD:ACL9537



[Lateral]
Ichneumonidae
BIN URI: BOLD:AAG7695



[Lateral]
Ichneumoninae
BIN URI: BOLD:AAH7265



[Lateral]
Hymenoptera
BIN URI: BOLD:AAH7283



[Lateral]
Ichneumonidae
BIN URI: BOLD:AAU8850



[Lateral]
Orthocentrinae
BIN URI: BOLD:AAH1521



[Lateral]
Dendrocerus
BIN URI: BOLD:ABW3264



[Lateral]
Platygastriidae
BIN URI: BOLD:AAU8342



[Lateral]
Vespa germanica
BIN URI: BOLD:AAG9055



[Dorsal]
Bucculatrix pomifoliella
BIN URI: BOLD:AAD2085



[Dorsal]
Hypena scabra
BIN URI: BOLD:AAA4222



[Dorsal]
Syncopacma
BIN URI: BOLD:AAF9988



[Dorsal]
Caloptilia hypericella
BIN URI: BOLD:AAE3468



[Dorsal]
Phyllonorycter cf. blancardella
BIN URI: BOLD:AAC4327



[Lateral]
Hemerobius humulinus
BIN URI: BOLD:AAG0892



[Lateral]
Micromus posticus
BIN URI: BOLD:AAG0906



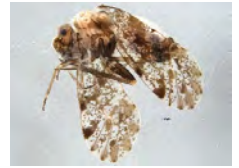
[Lateral]
Psocoptera
BIN URI: BOLD:AAH8447



[Lateral]
Valenzuela
BIN URI: BOLD:AAP2603



[Lateral]
Psocoptera
BIN URI: BOLD:AAH3225



[Lateral]
Psocoptera
BIN URI: BOLD:ACE6318



[Lateral]
Psocoptera
BIN URI: BOLD:AAH3232