

School Malaise Trap Program

Species Image Library

The images of the species collected in your Malaise trap are shown below. A single representative for each species was selected to be photographed; in some cases, only a damaged specimen was available.

Re-render images: per row

300 Records Per Page - Pages: 1



[Dorsal]
Dictyna brevitarsa
BIN URI: BOLD: AAN2653



[Dorsal]
Dictyna brevitarsa
BIN URI: BOLD: AAB2306



[Dorsal]
Philodromus alascensis
BIN URI: BOLD: AAC0312



[Dorsal]
Ascidae
BIN URI: BOLD: ACE1827



[Ventral]
Ascidae
BIN URI: BOLD: ABA5555



[Dorsal]
Oribatula
BIN URI: BOLD: AAZ5791



[Dorsal]
Sarcotiformes
BIN URI: BOLD: ACD9111



[Dorsal]
Anystidae
BIN URI: BOLD: ABW2639



[Dorsal]
Cyta
BIN URI: BOLD: AAH6636



[Lateral]
Entomobrya
BIN URI: BOLD: ACL6239



[Lateral]
Isotoma
BIN URI: BOLD: ACP8804



[Dorsal]
Coccinella septempunctata
BIN URI: BOLD: AAA8933



[Dorsal]
Corticaria
BIN URI: BOLD: ABA9093



[Lateral]
Corticarina
BIN URI: BOLD: ACD4236



[Lateral]
Tachyporus rulomus
BIN URI: BOLD: AAP7029



[Lateral]
Phytomyza
BIN URI: BOLD: ACP7355



[Dorsal]
Cecidomyiidae
BIN URI: BOLD: AAP9022



[Lateral]
Ceratopogonidae
BIN URI: BOLD: AAP9052



[Lateral]
Chironomidae
BIN URI: BOLD: AAG1004



[Lateral]
Chironomidae
BIN URI: BOLD: ACG3299



[Lateral]
Orthocladus
BIN URI: BOLD: ACP9504



[Lateral]
Orthocladus
BIN URI: BOLD: ABX3879



[Lateral]
Chironomidae
BIN URI: BOLD: AAN4803



[Dorsal]
Chironomidae
BIN URI: BOLD: AAN8989



[Dorsal]
Chironomidae
BIN URI: BOLD: ACP4736



[Lateral]
Orthocladinae
BIN URI: BOLD: ACL0132



[Lateral]
Aedes vexans
BIN URI: BOLD: AAA7067



[Lateral]
Drosophilidae
BIN URI: BOLD: AAN5544



[Lateral]
Suillia nemorum
BIN URI: BOLD: AAG0469



[Lateral]
Heleomyzidae
BIN URI: BOLD: AAP2913



[Lateral]
Heleomyzidae
BIN URI: BOLD:AAG0459



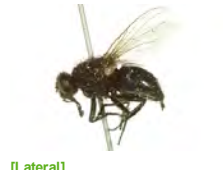
[Lateral]
Heleomyzidae
BIN URI: BOLD:AAE1978



[Lateral]
Heleomyzidae
BIN URI: BOLD:AAP6255



[Lateral]
Symplecta
BIN URI: BOLD:AAF9014



[Lateral]
Muscidae
BIN URI: BOLD:AAH3031



[Lateral]
Mycetophilidae
BIN URI: BOLD:ABU5545



[Lateral]
Mycetophilidae
BIN URI: BOLD:AAL9137



[Lateral]
Phoridae
BIN URI: BOLD:AAG3236



[Lateral]
Megaselia
BIN URI: BOLD:AAG3274



[Lateral]
Megaselia
BIN URI: BOLD:AAU6524



[Lateral]
Phoridae
BIN URI: BOLD:AAG3266



[Lateral]
Phoridae
BIN URI: BOLD:ABY0968



[Lateral]
Phoridae
BIN URI: BOLD:ACB6729



[Lateral]
Phoridae
BIN URI: BOLD:AAG3350



[Lateral]
Phoridae
BIN URI: BOLD:AAG3311



[Lateral]
Phoridae
BIN URI: BOLD:AAZ6701



[Lateral]
Psychodidae
BIN URI: BOLD:AAF9306



[Lateral]
Psychodidae
BIN URI: BOLD:ACF6513



[Lateral]
Scatopsidae
BIN URI: BOLD:AAN8523



[Lateral]
Sciaridae
BIN URI: BOLD:AAH3941



[Lateral]
Scatopsiara
BIN URI: BOLD:AAH3920



[Lateral]
Sciaridae
BIN URI: BOLD:AAH3929



[Lateral]
Sciaridae
BIN URI: BOLD:AAM9255



[Lateral]
Sciaridae
BIN URI: BOLD:ABX3194



[Lateral]
Sciaridae
BIN URI: BOLD:AAP6465



[Lateral]
Syrphidae
BIN URI: BOLD:AAB2384



[Lateral]
Syrphus vitripennis
BIN URI: BOLD:AAB5577



[Lateral]
Capitophorus elaeagni
BIN URI: BOLD:AAE3015



[Dorsal]
Chaetosphon fragaefolii
BIN URI: BOLD:AAD3961



[Dorsal]
Chaetophorus populialbae
BIN URI: BOLD:AAI4166



[Dorsal]
Ericaphis gentneri
BIN URI: BOLD:AAC9301



[Lateral]
Aphididae
BIN URI: BOLD:AAB8566



[Dorsal]
Metopolophium dirhodum
BIN URI: BOLD:AAE7796



[Lateral]
Aphididae
BIN URI: BOLD:AAB9332



[Lateral]
Nearctaphis crataegifoliae
BIN URI: BOLD:ACF1270



[Dorsal]
Rhopalosiphum padi
BIN URI: BOLD:AAA9899



[Lateral]
Amblysellus dorsti
BIN URI: BOLD:ACD9105



[Lateral]
Balclutha punctata
BIN URI: BOLD:AAG9374



[Dorsal]
Colladonus
BIN URI: BOLD:ACC8216



[Lateral]
Dikraneura
BIN URI: BOLD:AAV0227



[Dorsal]
Empoasca
BIN URI: BOLD:ACC8521



[Lateral]
Empoasca
BIN URI: BOLD:AAV0226



[Lateral]
Empoasca
BIN URI: BOLD:AAG8850



[Dorsal]
Empoasca
BIN URI: BOLD:ABA5763



[Lateral]
Empoasca
BIN URI: BOLD:ACP7407



[Dorsal]
Empoasca
BIN URI: BOLD:AAN8289



[Lateral]
Typhlocyba pomaria
BIN URI: BOLD:AAF5980



[Lateral]
Typhlocyba
BIN URI: BOLD:ABA5828



[Dorsal]
Lygus lineolaris
BIN URI: BOLD:AAA5803



[Dorsal]
Lygus plagiatus
BIN URI: BOLD:ACF4388



[Lateral]
Nabis americoferus
BIN URI: BOLD:AAB8143



[Lateral]
Craspedolepta
BIN URI: BOLD:ACI8479



[Lateral]
Hemiptera
BIN URI: BOLD:AAO8339



[Dorsal]
Aphelinus
BIN URI: BOLD:ACP9451



[Lateral]
Aphidiinae
BIN URI: BOLD:ACP9320



[Lateral]
Praon
BIN URI: BOLD:AAC9533



[Lateral]
Opinae
BIN URI: BOLD:ACP9711



[Lateral]
Braconidae
BIN URI: BOLD:AAU9028



[Dorsal]
Belyta validicornis
BIN URI: BOLD:AAU8736



[Dorsal]
Encyrtidae
BIN URI: BOLD:ACP9725



[Lateral]
Eulophidae
BIN URI: BOLD:ACL2737



[Lateral]
Formicidae
BIN URI: BOLD:AAI1292



[Lateral]
Ichneumonidae
BIN URI: BOLD:ACE0702



[Lateral]
Diadegma sp.
BIN URI: BOLD:AAB8765



[Lateral]
Diadegma
BIN URI: BOLD:AAL1411



[Dorsal]
Eruga
BIN URI: BOLD:ACP9667



[Lateral]
Hymenoptera
BIN URI: BOLD:AAA6280



[Lateral]
Itopectis vesca
BIN URI: BOLD:AAB1282



[Lateral]
Lissonota coracina
BIN URI: BOLD:AAG7794



[Lateral]
Orthocentrus JFT02
BIN URI: BOLD:AAU8218



[Lateral]
Ichneumonidae
BIN URI: BOLD:AAH1498



[Lateral]
Scambus
BIN URI: BOLD:ACP9166



[Lateral]
Stenomacrus
BIN URI: BOLD:ACE4848



[Lateral]
Woldstedtius
BIN URI: BOLD:ACC6456



[Lateral]
Ichneumonidae
BIN URI: BOLD:AAN7726



[Lateral]
Ichneumonidae
BIN URI: BOLD:AAC8821



[Lateral]
Ichneumonidae
BIN URI: BOLD:AAQ2692



[Lateral]
Ichneumonidae
BIN URI: BOLD:AAQ2915



[Lateral]
Anagrus
BIN URI: BOLD:AAZ1968



[Lateral]
Hymenoptera
BIN URI: BOLD:ACD0107



[Lateral]
Myrmaridae
BIN URI: BOLD:ACP9674



[Dorsal]
Idris
BIN URI: BOLD:ACP9287



[Lateral]
Idris
BIN URI: BOLD:AAU9367



[Dorsal]
Hymenoptera
BIN URI: BOLD:ACD5196



[Lateral]
Platygastridae
BIN URI: BOLD:AAU8342



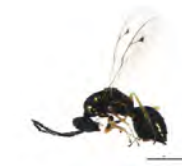
[Lateral]
Telenomus
BIN URI: BOLD:AAU9340



[Lateral]
Pteromalus
BIN URI: BOLD:AAN8215



[Lateral]
Pteromalidae
BIN URI: BOLD:ACD0889



[Lateral]
Pteromalidae
BIN URI: BOLD:AAG8414



[Dorsal]
Caloptilia syringella
BIN URI: BOLD:AAC0054



[Dorsal]
Plutella xylostella
BIN URI: BOLD:AAA1513



[Lateral]
Psocoptera
BIN URI: BOLD:ABW5647



[Lateral]
Psocoptera
BIN URI: BOLD:ACG6082



[Lateral]
Psocoptera
BIN URI: BOLD:ACM5405