

School Malaise Trap Program

Species Image Library

The images of the species collected in your Malaise trap are shown below. A single representative from each species was selected to be photographed; in some cases, only a damaged specimen was available.



[Dorsal]
Clubiona canadensis
BIN URI: BOLD:AAB2563



[Dorsal]
Emblyna peragrata
BIN URI: BOLD:ACR9719



[Dorsal]
Helophora reducta
BIN URI: BOLD:AAP4444



[Dorsal]
Linyphantes pualla
BIN URI: BOLD:ACO2829



[Dorsal]
Tachygyna ursina
BIN URI: BOLD:AAL6034



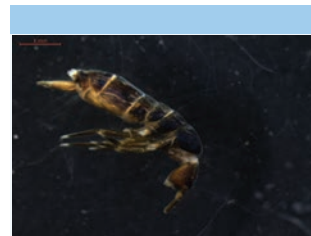
[Dorsal]
Walckenaeria spiralis
BIN URI: BOLD:ACI5582



[Dorsal]
Tetragnatha versicolor
BIN URI: BOLD:AAL5716



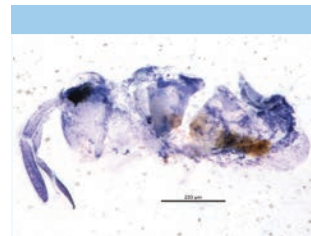
[Lateral]
Lepidocyrtus
BIN URI: BOLD:AAI1229



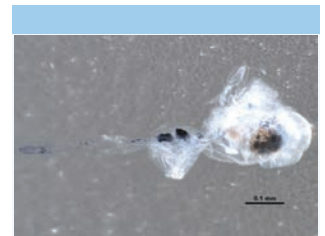
[Lateral]
Tomocerus minor
BIN URI: BOLD:AAB5440



[Lateral]
Dicyrtomidae
BIN URI: BOLD:ACD9445



[Lateral]
Sminthurinus
BIN URI: BOLD:ACD9363



[Lateral]
Collembola
BIN URI: BOLD:ACR4352



[Dorsal]
Collembola
BIN URI: BOLD:ACU6621



[Dorsal]
Corticara gibbosa
BIN URI: BOLD:ACT7903



[Dorsal]
Cartodere nodifer
BIN URI: BOLD:AAO0516



[Dorsal]
Forficula auricularia-BD
BIN URI: BOLD:AAE0456



[Lateral]
Anisopodidae
BIN URI: BOLD:AAG1996



[Lateral]
Sylvicola
BIN URI: BOLD:ABZ6572



[Lateral]
Anthomyiidae
BIN URI: BOLD:ACF2899



[Lateral]
Pegomya geniculata
BIN URI: BOLD:AAG2466



[Lateral]
Leiomyza
BIN URI: BOLD:ACY0228



[Lateral]
Calliphora terraenovae
BIN URI: BOLD:AAE0683



[Lateral]
Cynomya mortuorum
BIN URI: BOLD:AAB0868



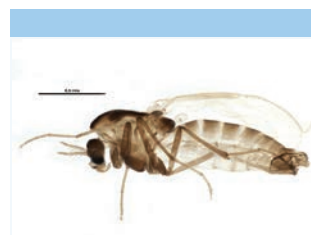
[Lateral]
Cecidomyiidae
BIN URI: BOLD:ACC4254



[Lateral]
Forcipomyia
BIN URI: BOLD:ACH2511



[Lateral]
Forcipomyia
BIN URI: BOLD:AAV5088



[Lateral]
Corynoneura arctica
BIN URI: BOLD:AAB0079



[Lateral]
Cricotopus
BIN URI: BOLD:ABY9141



[Lateral]
Gymnometrioctenemus
BIN URI: BOLD:ACC8307



[Lateral]
Micropsectra
BIN URI: BOLD:ACT0201



[Lateral]
Tanytarsus
BIN URI: BOLD:ACD0612



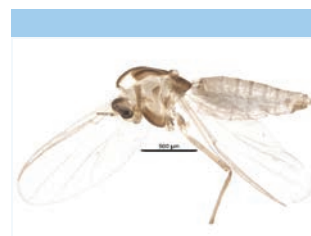
[Lateral]
Tanytarsus
BIN URI: BOLD:ACY3202



[Lateral]
Tanytarsus
BIN URI: BOLD:ACK7307



[Lateral]
Chironomidae
BIN URI: BOLD:ACO0535



[Lateral]
Chironomidae
BIN URI: BOLD:ACY1925



[Lateral]
Chironomidae
BIN URI: BOLD:ACT6261



[Lateral]
Orthocladiinae
BIN URI: BOLD:ACG6109



[Lateral]
Orthocladiinae
BIN URI: BOLD:ACP8287



[Lateral]
Culicinae
BIN URI: BOLD:AAT9780



[Dorsal]
Diadocidiidae
BIN URI: BOLD:AAM9000



[Lateral]
Drosophilidae
BIN URI: BOLD:ACU6348



[Lateral]
Heleomyzidae
BIN URI: BOLD:ACX4624



[Lateral]
Suillia nemorum
BIN URI: BOLD:ACX5303



[Lateral]
Hybotidae
BIN URI: BOLD:AAV3702



[Lateral]
Erioptera septemtrionis
BIN URI: BOLD:AAF9055



[Lateral]
Rhipidia
BIN URI: BOLD:AAZ6705



[Lateral]
Limoniidae
BIN URI: BOLD:ACI4059



[Lateral]
Azelia cilipes
BIN URI: BOLD:ACT6447



[Lateral]
Hebecnema pallipes
BIN URI: BOLD:AAG1726



[Lateral]
Morellia micans
BIN URI: BOLD:AAI3263



[Lateral]
Mydaea brevipilosa
BIN URI: BOLD:AAG1779



[Lateral]
Myspila mediatubunda
BIN URI: BOLD:AAD7145



[Lateral]
Phaonia
BIN URI: BOLD:ACE6851



[Lateral]
Phaonia tuguriorum
BIN URI: BOLD:AAL2750



[Lateral]
Thricops diaphanus
BIN URI: BOLD:AAG1710



[Lateral]
Mycetophilidae
BIN URI: BOLD:AAG4898



[Lateral]
Mycetophila
BIN URI: BOLD:AAV4006



[Lateral]
Mycetophilidae
BIN URI: BOLD:AAG4896



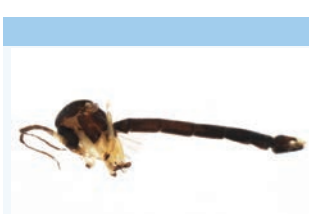
[Lateral]
Mycomya sp. CJB4
BIN URI: BOLD:AAG4890



[Lateral]
Phronia
BIN URI: BOLD:AAP6497



[Lateral]
Mycetophilidae
BIN URI: BOLD:ACY2015



[Lateral]
Mycetophilidae
BIN URI: BOLD:AAL9136



[Lateral]
Exechiopsis contaminata
BIN URI: BOLD:AAP8159



[Lateral]
Phoridae
BIN URI: BOLD:AAG3248



[Lateral]
Megaselia
BIN URI: BOLD:AAG3266



[Lateral]
Megaselia
BIN URI: BOLD:ACA8228



[Lateral]
Megaselia
BIN URI: BOLD:ACB1013



[Lateral]
Phoridae
BIN URI: BOLD:AAP8118



[Lateral]
Phoridae
BIN URI: BOLD:ACC7040



[Lateral]
Phoridae
BIN URI: BOLD:ACB6729



[Lateral]
Phoridae
BIN URI: BOLD:AAG3254



[Lateral]
Phoridae
BIN URI: BOLD:ACD1602



[Lateral]
Phoridae
BIN URI: BOLD:ACE1146



[Lateral]
Phoridae
BIN URI: BOLD:AAP6413



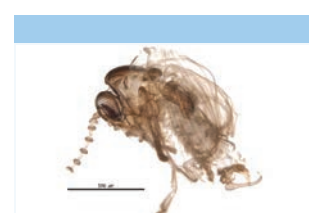
[Lateral]
Phoridae
BIN URI: BOLD:ACB2325



[Lateral]
Psychoda
BIN URI: BOLD:ACD1259



[Lateral]
Psychodidae
BIN URI: BOLD:AAM9201



[Lateral]
Psychoda
BIN URI: BOLD:ACU0338



[Lateral]
Scathophaga furcata
BIN URI: BOLD:ACX4405



[Lateral]
Scathophaga
BIN URI: BOLD:AAH0023



[Lateral]
Sciaridae
BIN URI: BOLD:ACB9102



[Lateral]
Sciaridae
BIN URI: BOLD:ACN8175



[Lateral]
Simulium
BIN URI: BOLD:ACE3756



[Lateral]
Sericomomyia chalcopyga
BIN URI: BOLD:AAF0827



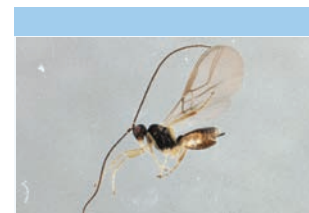
[Lateral]
Neophilaenus lineatus



[Lateral]
Philaenus spumarius



[Dorsal]
Hemiptera



[Lateral]
Alysiinae



[Lateral]
Diapriidae



[Lateral]
Diapriidae

BIN URI: BOLD:AAG5648

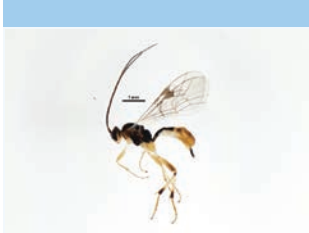
quadrimaculatus
BIN URI: BOLD:AAB1850

BIN URI: BOLD:AAO8340

BIN URI: BOLD:AAQ2970

BIN URI: BOLD:ACD1629

BIN URI: BOLD:ABZ4070



[Lateral]

Charipinae
BIN URI: BOLD:ACI5199

[Lateral]

Charipinae
BIN URI: BOLD:ACT6224

[Lateral]

Exochus pictus
BIN URI: BOLD:AAU9095

[Lateral]

Megastylus jft01
BIN URI: BOLD:AAF3508

[Lateral]

Mesochorus suomiensis
BIN URI: BOLD:AAZ1979

[Lateral]

Cryptinae
BIN URI: BOLD:AAF1382



[Lateral]

Cryptinae
BIN URI: BOLD:AAC8821

[Lateral]

Cryptinae
BIN URI: BOLD:AAH1608

[Lateral]

Ichneumoninae
BIN URI: BOLD:AAH1731

[Lateral]

Megaspilidae
BIN URI: BOLD:ACJ1417

[Lateral]

Megaspilidae
BIN URI: BOLD:ACR4010

[Lateral]

Gonatocerus
BIN URI: BOLD:AAG1488



[Lateral]

Ooconus notatus
BIN URI: BOLD:ABA3660

[Lateral]

Telenomus
BIN URI: BOLD:ACX6624

[Lateral]

Platygastridae
BIN URI: BOLD:ACE3998

[Dorsal]

Eudonia lugubralis
BIN URI: BOLD:AAA1518

[Lateral]

Caeciliusidae
BIN URI: BOLD:ACC5694