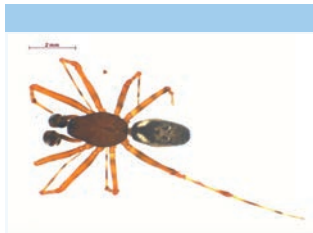


School Malaise Trap Program

Species Image Library

The images of the species collected in your Malaise trap are shown below. A single representative from each species was selected to be photographed; in some cases, only a damaged specimen was available.



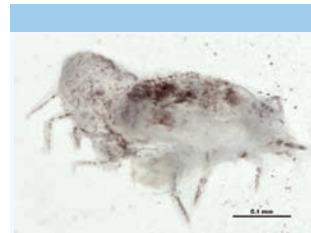
[Dorsal]
Neriene digna
BIN URI: BOLD:AAL6747



[Dorsal]
Wubana pacifica
BIN URI: BOLD:AAM3904



[Dorsal]
Robertus vigerens
BIN URI: BOLD:AAL5817



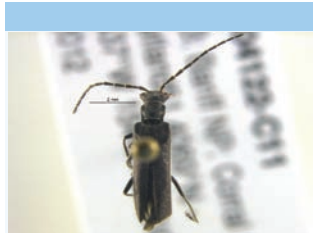
[Lateral]
Alycidae
BIN URI: BOLD:ACV5456



[Lateral]
Lepidocyrtus
BIN URI: BOLD:AAI1229



[Dorsal]
Dichelotarsus piniphilus
BIN URI: BOLD:AAP7080



[Dorsal]
Dichelotarsus
BIN URI: BOLD:ACD1281



[Lateral]
Dichelotarsus lygarius
BIN URI: BOLD:AAH0933



[Dorsal]
Plectrura spinicauda
BIN URI: BOLD:ACA8608



[Dorsal]
Corymbitodes lobatus
BIN URI: BOLD:AAQ0088



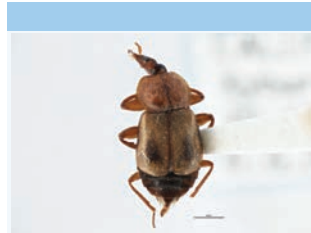
[Dorsal]
Cartodere nodifer
BIN URI: BOLD:AAO0516



[Dorsal]
Pelecomalium testaceum
BIN URI: BOLD:AAP7085



[Dorsal]
Philonthus cognatus
BIN URI: BOLD:AAL5087



[Dorsal]
Amphichroum maculatum
BIN URI: BOLD:ACC2262



[Lateral]
Chromatomyia
BIN URI: BOLD:ACP9372



[Lateral]
Agromyzidae
BIN URI: BOLD:AAP6787



[Lateral]
Agromyzidae
BIN URI: BOLD:ACU8660



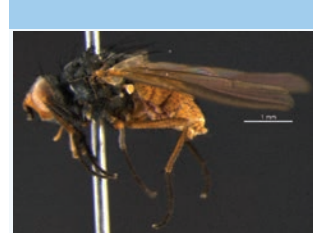
[Lateral]
Agromyzidae
BIN URI: BOLD:AAG4788



[Lateral]
Anthomyiidae
BIN URI: BOLD:AAG2460



[Lateral]
Anthomyiidae
BIN URI: BOLD:ACF2899



[Lateral]
Pegomya
BIN URI: BOLD:AAG2477



[Lateral]
Pegomya
BIN URI: BOLD:AAP8831



[Lateral]
Pegomya
BIN URI: BOLD:AAG2464



[Lateral]
Pollenia vagabunda
BIN URI: BOLD:AAH3040



[Lateral]
Cecidomyiidae
BIN URI: BOLD:ACT8582



[Lateral]
Forcipomyia
BIN URI: BOLD:AAV5088



[Lateral]
Ceratopogonidae
BIN URI: BOLD:ACB9558



[Lateral]
Gymnometriocnemus
BIN URI: BOLD:AAI4193



[Lateral]
Gymnometriocnemus
BIN URI: BOLD:ACV5772



[Lateral]
Gymnometriocnemus
BIN URI: BOLD:ACB9642



[Lateral]
Gymnometriocnemus
BIN URI: BOLD:ACB9028



[Lateral]
Limnophyes
BIN URI: BOLD:ACC2637



[Lateral]
Limnophyes
BIN URI: BOLD:ACC1272



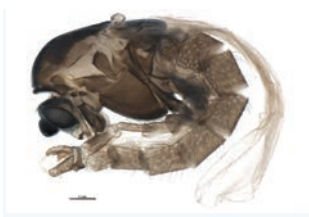
[Lateral]
Limnophyes
BIN URI: BOLD:ACL9914



[Lateral]
Metriocnemus
BIN URI: BOLD:ACB8808



[Lateral]
Chironomidae
BIN URI: BOLD:ACV5145



[Lateral]
Chironomidae
BIN URI: BOLD:ACB9109



[Lateral]
Chaoboridae
BIN URI: BOLD:ACT8452



[Lateral]
Chironomidae
BIN URI: BOLD:ACB9191



[Lateral]
Chironomidae
BIN URI: BOLD:ACV5179



[Lateral]
Chironomidae
BIN URI: BOLD:ACU8116



[Lateral]
Chironomidae
BIN URI: BOLD:ACU8395



[Lateral]
Chironomidae
BIN URI: BOLD:ACB2408



[Lateral]
Orthoclaadiinae
BIN URI: BOLD:ACC1767



[Lateral]
Orthoclaadiinae
BIN URI: BOLD:ACU8494



[Lateral]
Tanypodinae
BIN URI: BOLD:AAP7558



[Lateral]
Clinocera fuscipennis
BIN URI: BOLD:AAV3742



[Lateral]
Rhaphomyia
BIN URI: BOLD:AAP8914



[Lateral]
Rhaphomyia sp. 44
BIN URI: BOLD:ACA1112



[Lateral]
Empididae
BIN URI: BOLD:ACU7862



[Lateral]
Empididae
BIN URI: BOLD:ACU9356



[Lateral]
Ephyridae
BIN URI: BOLD:ACY8263



[Lateral]
Parydra quadriloba
BIN URI: BOLD:ACC3559



[Lateral]
Limonia nubeculosa
BIN URI: BOLD:AAI1355



[Lateral]
Limoniidae
BIN URI: BOLD:ACC1121



[Lateral]
Coenosia pilosissima
BIN URI: BOLD:AAP6478



[Lateral]
Lispocephala erythrocerata
BIN URI: BOLD:AAG1704



[Lateral]
Mydaea obscurella
BIN URI: BOLD:AAC6709



[Lateral]
Phaonia
BIN URI: BOLD:ACE6851



[Lateral]
Brevicornu
BIN URI: BOLD:ACV5426



[Lateral]
Mycetophilidae
BIN URI: BOLD:ACT1829



[Lateral]
Mycetophilidae
BIN URI: BOLD:ACH2670



[Lateral]
Mycetophilidae
BIN URI: BOLD:ACU8589



[Lateral]
Mycetophilidae
BIN URI: BOLD:ACT1844



[Lateral]
Mycetophilidae
BIN URI: BOLD:ACT5607



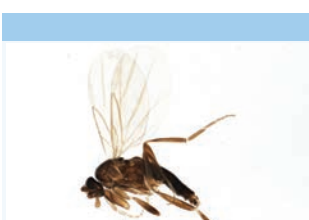
[Lateral]
Phoridae
BIN URI: BOLD:ACX1594



[Lateral]
Megaselia eccoptomera
BIN URI: BOLD:AAG3250



[Lateral]
Megaselia
BIN URI: BOLD:ACA8228



[Lateral]
Phoridae
BIN URI: BOLD:ACE1146



[Lateral]
Phoridae
BIN URI: BOLD:ACB9084



[Lateral]
Phoridae
BIN URI: BOLD:AAP2490



[Lateral]
Psychodidae
BIN URI: BOLD:ACB9693



[Lateral]
Scathophaga furcata
BIN URI: BOLD:ACX4405



[Lateral]
Scathophaga
BIN URI: BOLD:AAH0023



[Lateral]
Scathophaga stercoraria
BIN URI: BOLD:AAD0853



[Lateral]
Scathophaga
BIN URI: BOLD:ACV5203



[Lateral]
Scathophagidae
BIN URI: BOLD:ACV5445



[Lateral]
Scathophagidae
BIN URI: BOLD:AAP6459



[Lateral]
Cratyna nobilis
BIN URI: BOLD:ACD6111



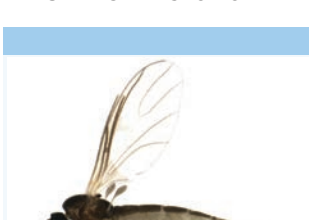
[Lateral]
Sciaridae
BIN URI: BOLD:ACV5329



[Lateral]
Sciaridae
BIN URI: BOLD:ACT6579



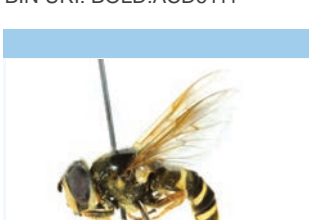
[Lateral]
Sciaridae
BIN URI: BOLD:ACB9445



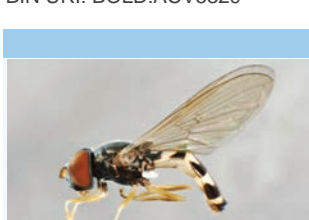
[Lateral]
Sciaridae
BIN URI: BOLD:AAP6422



[Lateral]
Sciaridae
BIN URI: BOLD:ACV5961



[Lateral]
Sericomyia chalcopyga



[Lateral]
Melanostoma



[Lateral]
Elatobium abietinum



[Dorsal]
Euceraphis gillettei



[Lateral]
Myzus ascalonicus



[Lateral]
Empoasca

BIN URI: BOLD:AAF0827



[Lateral]

Cicadellidae
BIN URI: BOLD:AAV0254

BIN URI: BOLD:AAB2866



[Lateral]

Aleiodes
BIN URI: BOLD:AAG1350

BIN URI: BOLD:AAF5275



[Lateral]

Glyptapanteles sp.
BIN URI: BOLD:AAA4783

BIN URI: BOLD:AAD8929



[Lateral]

Myrmica incompleta
BIN URI: BOLD:AAA1858

BIN URI: BOLD:AAC9775



[Lateral]

Aclastus
BIN URI: BOLD:AAA9140

BIN URI: BOLD:ACC4174



[Lateral]

Stenomacrus
BIN URI: BOLD:ACG3877



[Lateral]

Cryptinae
BIN URI: BOLD:ACR4530



[Lateral]

Cryptinae
BIN URI: BOLD:AAC8821



[Lateral]

Ichneumonidae
BIN URI: BOLD:ACM2897



[Lateral]

Orthocentrus jft10
BIN URI: BOLD:AAB1188



[Lateral]

Tersilochinae
BIN URI: BOLD:ACV4630



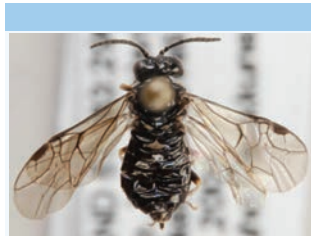
[Lateral]

Telenomus
BIN URI: BOLD:AAN7666



[Lateral]

Platygastridae
BIN URI: BOLD:ACV5646



[Dorsal]

Monophadnus pallescens
BIN URI: BOLD:AAF2146



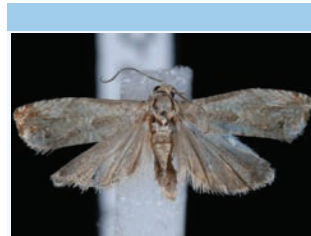
[Dorsal]

Glyphipterix sistes
BIN URI: BOLD:AAI5391



[Lateral]

Dahlica
BIN URI: BOLD:AAD1523



[Dorsal]

Epinotia albangulana
BIN URI: BOLD:AAB8744



[Lateral]

Psocoptera
BIN URI: BOLD:ACB0984