

School Malaise Trap Program

Species Image Library

The images of the species collected in your Malaise trap are shown below. A single representative for each species was selected to be photographed; in some cases, only a damaged specimen was available.

Re-render images: per row

300 Records Per Page - Pages: 1



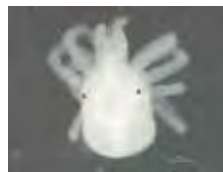
[Dorsal]
Erigone blaesae
BIN URI: BOLD:ACE9601



[Dorsal]
Salticus scenicus
BIN URI: BOLD:AAC9044



[Dorsal]
Anystidae
BIN URI: BOLD:ACC2025



[Dorsal]
Anystidae
BIN URI: BOLD:ABW2639



[Lateral]
Collembola
BIN URI: BOLD:ABA7343



[Lateral]
Entomobrya
BIN URI: BOLD:ACL6239



[Lateral]
Entomobrya multifasciata
BIN URI: BOLD:AAA7242



[Lateral]
Omonadus floralis
BIN URI: BOLD:AAN6206



[Dorsal]
Acalymma vittatum
BIN URI: BOLD:AAF4335



[Lateral]
Crepidodera
BIN URI: BOLD:AAP7062



[Lateral]
Longitarsus pellucidus
BIN URI: BOLD:ABA1661



[Dorsal]
Coleomegilla maculata lengi
BIN URI: BOLD:AAD7604



[Dorsal]
Coccinellidae
BIN URI: BOLD:AAB5640



[Lateral]
Corticaria
BIN URI: BOLD:AAN6154



[Dorsal]
Cortinicara gibbosa
BIN URI: BOLD:AAI8935



[Dorsal]
Philonthus carbonarius
BIN URI: BOLD:AAR1764



[Dorsal]
Trixagus carnicollis
BIN URI: BOLD:AAN6148



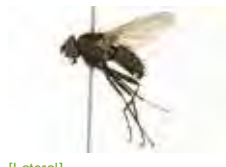
[Dorsal]
Trixagus
BIN URI: BOLD:AAU6966



[Lateral]
Phytomyza
BIN URI: BOLD:ACG5827



[Lateral]
Anisopodidae
BIN URI: BOLD:AAL7534



[Lateral]
Anthomyiidae
BIN URI: BOLD:AAG2460



[Lateral]
Cecidomyiidae
BIN URI: BOLD:AAV5561



[Lateral]
Cecidomyiidae
BIN URI: BOLD:AAG3625



[Lateral]
Cecidomyiidae
BIN URI: BOLD:AAV6401



[Lateral]
Cecidomyiidae
BIN URI: BOLD:AAN5250



[Lateral]
Cecidomyiidae
BIN URI: BOLD:AAN5283



[Lateral]
Cecidomyiidae
BIN URI: BOLD:AAH3639



[Lateral]
Cecidomyiidae
BIN URI: BOLD:AAZ5600



[Lateral]
Cecidomyiidae
BIN URI: BOLD:ACP9270



[Lateral]
Cecidomyiidae
BIN URI: BOLD:AAU6623



[Lateral]
Cecidomyiidae
BIN URI: BOLD: AAN5178



[Dorsal]
Ceratopogonidae
BIN URI: BOLD: AAN5162



[Lateral]
Bryophaenocladus sp. 8ES
BIN URI: BOLD: AAG1021



[Lateral]
Chironomidae
BIN URI: BOLD: AAB4657



[Lateral]
Chironomidae
BIN URI: BOLD: ABU5525



[Lateral]
Smittia
BIN URI: BOLD: AAN5355



[Lateral]
Smittia sp. 22ES
BIN URI: BOLD: AAN5358



[Lateral]
Chironomidae
BIN URI: BOLD: AAM7064



[Lateral]
Chironomidae
BIN URI: BOLD: AAU6612



[Lateral]
Chironomidae
BIN URI: BOLD: AAN5342



[Lateral]
Chironomidae
BIN URI: BOLD: AAQ0602



[Lateral]
Chironomidae
BIN URI: BOLD: ABA6447



[Lateral]
Muscidae
BIN URI: BOLD: AAG1711



[Lateral]
Phoridae
BIN URI: BOLD: AAG3236



[Lateral]
Phoridae
BIN URI: BOLD: AAG3248



[Lateral]
Phoridae
BIN URI: BOLD: ABU5529



[Lateral]
Bradysia difformis
BIN URI: BOLD: AAV1295



[Lateral]
Sciaridae
BIN URI: BOLD: AAH3939



[Lateral]
Scatopsiara
BIN URI: BOLD: ACF4135



[Lateral]
Sciaridae
BIN URI: BOLD: AAP6465



[Lateral]
Sciaridae
BIN URI: BOLD: ABV1297



[Lateral]
Sciaridae
BIN URI: BOLD: AAN6447



[Lateral]
Sciaridae
BIN URI: BOLD: ABA6407



[Lateral]
Sciaridae
BIN URI: BOLD: ABU5521



[Lateral]
Sciaridae
BIN URI: BOLD: AAU6595



[Lateral]
Sciaridae
BIN URI: BOLD: AAN6446



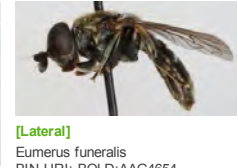
[Lateral]
Sciaridae
BIN URI: BOLD: AAN6437



[Lateral]
Spelobia ochripes
BIN URI: BOLD: AAG7279



[Lateral]
Sphaeroceridae
BIN URI: BOLD: ABV3224



[Lateral]
Eumerus funeralis
BIN URI: BOLD: AAG4654



[Lateral]
Tachinidae
BIN URI: BOLD: AAN6458



[Lateral]
Aleyrodidae
BIN URI: BOLD: AAZ8500



[Lateral]
Aphis glycines
BIN URI: BOLD: AAB7938



[Dorsal]
Aphis fabae
BIN URI: BOLD: AAA5565



[Lateral]
Capitophorus elaeagni
BIN URI: BOLD: AAE3015



[Dorsal]
Hemiptera
BIN URI: BOLD: AAJ3667



[Lateral]
Capitophorus
BIN URI: BOLD: ACP9661



[Dorsal]
Cinara laricifex
BIN URI: BOLD: AAD8424



[Dorsal]
Macrosiphum euphorbiae
BIN URI: BOLD: AAA6213



[Dorsal]
Metopolophium dirhodum
BIN URI: BOLD: AAE7796



[Dorsal]
Myzus persicae
BIN URI: BOLD: AAA7683



[Dorsal]
Periphyllus lyropictus
BIN URI: BOLD: AAH2863



[Dorsal]
Rhopalosiphum padi
BIN URI: BOLD:AAA9899



[Lateral]
Aphidinae
BIN URI: BOLD:AAV4767



[Lateral]
Empoasca
BIN URI: BOLD:AA8250



[Lateral]
Empoasca
BIN URI: BOLD:ABZ4247



[Lateral]
Empoasca
BIN URI: BOLD:AAG8850



[Dorsal]
Empoasca
BIN URI: BOLD:AAV0166



[Lateral]
Forcipata loca
BIN URI: BOLD:ACC8165



[Lateral]
Scaphoideus forceps
BIN URI: BOLD:AA9210



[Lateral]
Typhlocyba modesta
BIN URI: BOLD:ABA5773



[Lateral]
Typhlocyba
BIN URI: BOLD:ABA5828



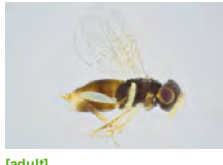
[Dorsal]
Typhlocyba
BIN URI: BOLD:ACJ7184



[Lateral]
Adelphocoris lineolatus
BIN URI: BOLD:ACE7444



[Dorsal]
Lygus lineolaris
BIN URI: BOLD:AAA5803



[adult]
Coccophaginae
BIN URI: BOLD:ABA9128



[Lateral]
Aphelinidae
BIN URI: BOLD:AAZ5700



[Lateral]
Aphidius
BIN URI: BOLD:ACF4786



[Lateral]
Blacus stelfoxi
BIN URI: BOLD:AAZ9744



[Lateral]
Dinotrema JFT01
BIN URI: BOLD:ACE5710



[Lateral]
Dinotrema
BIN URI: BOLD:AAU8200



[Lateral]
Hymenoptera
BIN URI: BOLD:AAU8379



[Lateral]
Ephedrus
BIN URI: BOLD:ACD1845



[Lateral]
Protapanteles
BIN URI: BOLD:AAA4782



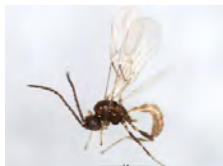
[Lateral]
Hymenoptera
BIN URI: BOLD:AAU8209



[Lateral]
Alysiniinae
BIN URI: BOLD:ACP7875



[Lateral]
Alysiniinae
BIN URI: BOLD:AA8140



[Lateral]
Hymenoptera
BIN URI: BOLD:AAG1421



[Lateral]
Cynipidae
BIN URI: BOLD:ABY9652



[Lateral]
Hymenoptera
BIN URI: BOLD:ACM1547



[Lateral]
Hymenoptera
BIN URI: BOLD:AA8209



[Lateral]
Tetrastichinae
BIN URI: BOLD:ACP7435



[Lateral]
Formica glacialis
BIN URI: BOLD:AAA1468



[Lateral]
Myrmicinae
BIN URI: BOLD:ABZ0938



[Lateral]
Lasiglossum laevisimum
BIN URI: BOLD:AAA7513



[Lateral]
Hymenoptera
BIN URI: BOLD:AAO2111



[Lateral]
Lisonota coracina
BIN URI: BOLD:AAG7794



[Lateral]
Hymenoptera
BIN URI: BOLD:AAP6689



[Lateral]
Cryptinae sp. MAS BIN84
BIN URI: BOLD:AAE9438



[Lateral]
Hymenoptera
BIN URI: BOLD:AAA5524



[Lateral]
Banchinae
BIN URI: BOLD:AAU8856



[Lateral]
Ichneumonidae
BIN URI: BOLD:AAU8850



[Lateral]
Anagrus
BIN URI: BOLD:AAZ1968



[Lateral]
Anagrus
BIN URI: BOLD:ACE0249



[Lateral]
Hymenoptera
BIN URI: BOLD:ABX2601



[Lateral]
Mymaridae
BIN URI: BOLD:AAU8632



[Lateral]
Mymaridae
BIN URI: BOLD:ACL7984



[Lateral]
Mymaridae
BIN URI: BOLD:ABW3187



[Lateral]
Amblyaspid
BIN URI: BOLD:AAU8575



[Lateral]
Synopeas
BIN URI: BOLD:AAU8562



[Lateral]
Telenomus
BIN URI: BOLD:AAU8578



[Lateral]
Telenomus
BIN URI: BOLD:AAU8098



[Lateral]
Telenomus
BIN URI: BOLD:AAU9194



[Lateral]
Platygastridae
BIN URI: BOLD:AAU8342



[Lateral]
Telenomus
BIN URI: BOLD:AAU9439



[Lateral]
Hymenoptera
BIN URI: BOLD:ACJ1470



[Dorsal]
Anania hortulata
BIN URI: BOLD:AAU0989



[Lateral]
Valenzuela burmeisteri
BIN URI: BOLD:AAO4092



[Lateral]
Psocoptera
BIN URI: BOLD:AAU8447



[Lateral]
Psocoptera
BIN URI: BOLD:AAH3228



[Lateral]
Valenzuela
BIN URI: BOLD:AAU2603