

# School Malaise Trap Program

## Species Image Library

The images of the species collected in your Malaise trap are shown below. A single representative for each species was selected to be photographed; in some cases, only a damaged specimen was available.

Re-render images:  per row

300 Records Per Page - Pages: 1



[Dorsal]  
*Xysticus cristatus*  
BIN URI: BOLD: AAP2437



[Dorsal]  
Blattisociidae  
BIN URI: BOLD: ACC0536



[Dorsal]  
Parasitidae  
BIN URI: BOLD: ACG5107



[Dorsal]  
Mesostigmata  
BIN URI: BOLD: ACP9436



[Dorsal]  
Trichoribates  
BIN URI: BOLD: ACL2370



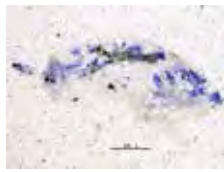
[Dorsal]  
Panonychus  
BIN URI: BOLD: ACK1507



[Lateral]  
*Lepidocyrtus*  
BIN URI: BOLD: AAA8820



[Lateral]  
Entomobryidae  
BIN URI: BOLD: ACP9313



[Lateral]  
Entomobryidae  
BIN URI: BOLD: ACD9444



[Lateral]  
Entomobryidae  
BIN URI: BOLD: ACI2941



[Lateral]  
Isotomidae  
BIN URI: BOLD: AAC2425



[Dorsal]  
*Psyllobora borealis*  
BIN URI: BOLD: ACA7954



[Dorsal]  
*Cartodere nodifer*  
BIN URI: BOLD: AA0516



[Dorsal]  
Ptinidae  
BIN URI: BOLD: ACP7481



[Lateral]  
*Pegomya winthemi*  
BIN URI: BOLD: AAG1783



[Lateral]  
Rhopalomyia  
BIN URI: BOLD: ACP9383



[Lateral]  
Rhopalomyia  
BIN URI: BOLD: ACP9246



[Lateral]  
Rhopalomyia  
BIN URI: BOLD: ACP7608



[Lateral]  
Rhopalomyia  
BIN URI: BOLD: ACP8367



[Lateral]  
Cecidomyiidae  
BIN URI: BOLD: ACM1828



[Lateral]  
Cecidomyiidae  
BIN URI: BOLD: ACP8885



[Lateral]  
Cecidomyiidae  
BIN URI: BOLD: AAH3617



[Lateral]  
Cecidomyiidae  
BIN URI: BOLD: AAN5198



[Lateral]  
Cecidomyiidae  
BIN URI: BOLD: ABX0130



[Lateral]  
Cecidomyiidae  
BIN URI: BOLD: ABA6427



[Lateral]  
Chironomidae  
BIN URI: BOLD: ABU5525



[Lateral]  
Limnophyes  
BIN URI: BOLD: ACN1294



[Lateral]  
Chironomidae  
BIN URI: BOLD: AAG1020



[Lateral]  
Chironomidae  
BIN URI: BOLD: AAG1019



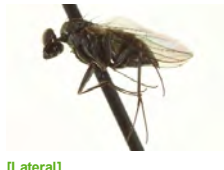
[Lateral]  
Chironomidae  
BIN URI: BOLD: ACG2764



[Lateral]  
*Chironomus* sp.  
BIN URI: BOLD:AAC0593



[Lateral]  
Orthocladinae  
BIN URI: BOLD:ACP7452



[Lateral]  
*Medetera* sp. SEB5  
BIN URI: BOLD:ACA1124



[Lateral]  
*Drosophila subobscura*  
BIN URI: BOLD:AAG4757



[Lateral]  
*Drosophila subpulchrella*  
BIN URI: BOLD:AAC2499



[Lateral]  
Empididae  
BIN URI: BOLD:AAF9789



[Lateral]  
*Cheilotrichia cinerascens*  
BIN URI: BOLD:ABV4106



[Lateral]  
Muscidae  
BIN URI: BOLD:AAG1780



[Lateral]  
Muscidae  
BIN URI: BOLD:AAG1711



[Lateral]  
*Mydaea furtiva*  
BIN URI: BOLD:AAG1779



[Lateral]  
Phoridae  
BIN URI: BOLD:AAG3286



[Lateral]  
Phoridae  
BIN URI: BOLD:AAG3260



[Lateral]  
Phoridae  
BIN URI: BOLD:AAP6422



[Lateral]  
Phoridae  
BIN URI: BOLD:ABY1912



[Lateral]  
Psychodidae  
BIN URI: BOLD:AAF9306



[Lateral]  
*Scathophaga furcata*  
BIN URI: BOLD:AAH0022



[Lateral]  
Scatopsidae  
BIN URI: BOLD:AAN8523



[Lateral]  
Scatopsidae  
BIN URI: BOLD:ABV3201



[Lateral]  
Scatopsidae  
BIN URI: BOLD:ACP9147



[Lateral]  
Sciaridae  
BIN URI: BOLD:AAM9252



[Lateral]  
*Lycoriella castanescens*  
BIN URI: BOLD:ABA1215



[Lateral]  
Sciaridae  
BIN URI: BOLD:AAN6453



[Lateral]  
Sciaridae  
BIN URI: BOLD:AAN6447



[Lateral]  
Sciaridae  
BIN URI: BOLD:ACB9102



[Dorsal]  
*Pullimosina heteroneura*  
BIN URI: BOLD:ACG0715



[Lateral]  
Sphaeroceridae  
BIN URI: BOLD:AAG7275



[Lateral]  
*Spelobia bifrons*  
BIN URI: BOLD:AAN6408



[Lateral]  
Limosiniinae  
BIN URI: BOLD:ACP7626



[Lateral]  
*Sargus bipunctatus*  
BIN URI: BOLD:ACI9008



[Lateral]  
Syrphidae  
BIN URI: BOLD:AAB2384



[Lateral]  
*Syrphus torvus*  
BIN URI: BOLD:AAC6088



[Lateral]  
*Tipula paludosa*  
BIN URI: BOLD:AAE7386



[Lateral]  
*Aleyrodes*  
BIN URI: BOLD:ABW2915



[Lateral]  
Hemiptera  
BIN URI: BOLD:ACC4360



[Dorsal]  
*Anoecia corni*  
BIN URI: BOLD:AAH2871



[Dorsal]  
*Aphis fabae*  
BIN URI: BOLD:AAA5565



[Lateral]  
*Eriosoma americanum*  
BIN URI: BOLD:AAD7955



[Lateral]  
*Eulachnus rileyi*  
BIN URI: BOLD:AAC6347



[Dorsal]  
*Myzus cerasi*  
BIN URI: BOLD:AAB2802



[Lateral]  
*Rhopalosiphum nymphaeae*  
BIN URI: BOLD:AAE3554



[Dorsal]  
*Rhopalosiphum padi*  
BIN URI: BOLD:AAA9899



[Dorsal]  
*Takecallis arundicolens*  
BIN URI: BOLD:AAH2363



[Dorsal]  
Hemiptera  
BIN URI: BOLD:AAE9712



[Dorsal]  
Aphididae  
BIN URI: BOLD:ACP7539



[Lateral]  
Hemiptera  
BIN URI: BOLD:ABA5818



[Lateral]  
Philaenus spumarius  
BIN URI: BOLD:AAB1850



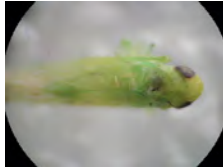
[Dorsal]  
Hemiptera  
BIN URI: BOLD:AAO8340



[Lateral]  
Empoasca decipiens  
BIN URI: BOLD:AAy6741



[Lateral]  
Typhlocybinae  
BIN URI: BOLD:ACC4174



[Dorsal]  
Hemiptera  
BIN URI: BOLD:AA8406



[Lateral]  
Eupteryx melissae  
BIN URI: BOLD:AAG2870



[Lateral]  
Typhlocyba  
BIN URI: BOLD:ABA5828



[Dorsal]  
Hemiptera  
BIN URI: BOLD:ABZ9658



[Dorsal]  
Cicadellidae  
BIN URI: BOLD:ACP7727



[Dorsal]  
Lyctocoris campestris  
BIN URI: BOLD:ABA0118



[Lateral]  
Hymenoptera  
BIN URI: BOLD:ACF4040



[Lateral]  
Aphidius urticae  
BIN URI: BOLD:ACH8732



[Lateral]  
Aphidius  
BIN URI: BOLD:ACF4786



[Lateral]  
Dinotrema  
BIN URI: BOLD:AAU8452



[Lateral]  
Dinotrema jft01  
BIN URI: BOLD:AAA7636



[Lateral]  
Braconidae  
BIN URI: BOLD:AAQ2891



[Lateral]  
Alysiniinae  
BIN URI: BOLD:ABA9140



[Lateral]  
Alysiniinae  
BIN URI: BOLD:AA8138



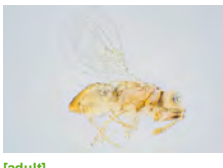
[Lateral]  
Aphidiinae  
BIN URI: BOLD:ACP9662



[Lateral]  
Hymenoptera  
BIN URI: BOLD:AAP6708



[Lateral]  
Diapriidae  
BIN URI: BOLD:ACJ5673



[adult]  
Encyrtidae



[Lateral]  
Eulophidae  
BIN URI: BOLD:ACP8797



[Lateral]  
Eulophidae  
BIN URI: BOLD:ACP9625



[Lateral]  
Diadegma  
BIN URI: BOLD:ACP9048



[Lateral]  
Pimpla hesperus  
BIN URI: BOLD:AAP6739



[Lateral]  
Diadegma sp.  
BIN URI: BOLD:AAZ8184



[Lateral]  
Anagrus  
BIN URI: BOLD:AAZ5703



[Dorsal]  
Anagrus  
BIN URI: BOLD:AA8413



[Lateral]  
Mymaridae  
BIN URI: BOLD:AAZ0173



[Lateral]  
Mymaridae  
BIN URI: BOLD:ACI9987



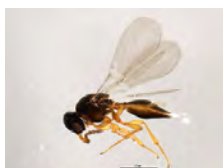
[Dorsal]  
Mymaridae  
BIN URI: BOLD:ACP9287



[Lateral]  
Mymaridae  
BIN URI: BOLD:ACE1230



[Lateral]  
Scelioninae  
BIN URI: BOLD:ACP8629



[Lateral]  
Platygastriidae  
BIN URI: BOLD:AAU9072



[Lateral]  
Platygastriidae  
BIN URI: BOLD:ACP9053



[Lateral]  
Telenomus  
BIN URI: BOLD:AAU9340



[Lateral]  
Hymenoptera  
BIN URI: BOLD:AAU8450



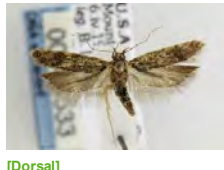
[Lateral]  
Trichogramma  
BIN URI: BOLD:ACP7718



[Dorsal]  
Hymenoptera  
BIN URI: BOLD:ACC6467



[Lateral]  
*Vespa pennsylvanica*  
BIN URI: BOLD:AAG8042



[Dorsal]  
*Chionodes*  
BIN URI: BOLD:AAH5082



[Dorsal]  
*Noctua comes*  
BIN URI: BOLD:AAA2633



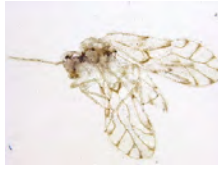
[Dorsal]  
*Dahlica*  
BIN URI: BOLD:AAD1523



[Dorsal]  
*Acleris rhombana*  
BIN URI: BOLD:AAE3741



[Dorsal]  
Psocoptera  
BIN URI: BOLD:AAZ6687



[Lateral]  
Psocoptera  
BIN URI: BOLD:AAP2620



[Dorsal]  
Thysanoptera  
BIN URI: BOLD:AAZ8718