

School Malaise Trap Program

Species Image Library

The images of the species collected in your Malaise trap are shown below. A single representative for each species was selected to be photographed; in some cases, only a damaged specimen was available.

Re-render images: per row

300 Records Per Page - Pages: 1



[Dorsal]
Erigone aletris
BIN URI: BOLD:AAD1746



[Dorsal]
Grammonota angusta
BIN URI: BOLD:AAD1498



[Dorsal]
Spirembolus mundus
BIN URI: BOLD:AAP4796



[Dorsal]
Pardosa moesta
BIN URI: BOLD:AAB0863



[Dorsal]
Philodromus rufus vibrans
BIN URI: BOLD:AAB2768



[Dorsal]
Ameroseiidae
BIN URI: BOLD:ACJ7625



[Dorsal]
Phytoseiidae
BIN URI: BOLD:AAZ5638



[Dorsal]
Anystidae
BIN URI: BOLD:AAF9236



[Dorsal]
Anystidae
BIN URI: BOLD:ABW5642



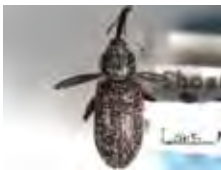
[Lateral]
Phyllotreta striolata
BIN URI: BOLD:AAP7016



[Dorsal]
Psyllodes cucullata
BIN URI: BOLD:ABX3225



[Dorsal]
Coccinella septempunctata
BIN URI: BOLD:AAA8933



[Dorsal]
Dorytomus inaequalis
BIN URI: BOLD:ACA3993



[Dorsal]
Hypera postica
BIN URI: BOLD:AAN9744



[Lateral]
Curculionidae
BIN URI: BOLD:ACL4042



[Dorsal]
Corticaria
BIN URI: BOLD:ABA9093



[Lateral]
Corticaria
BIN URI: BOLD:ACD4236



[Dorsal]
Corticaria
BIN URI: BOLD:AAH0256



[Lateral]
Amischa analis
BIN URI: BOLD:ABA5313



[Lateral]
Sepeodophilus marshami
BIN URI: BOLD:AAN9241



[Lateral]
Chromatomyia fuscula
BIN URI: BOLD:AAJ5430



[Lateral]
Anisopodidae
BIN URI: BOLD:AAL7534



[Lateral]
Diptera
BIN URI: BOLD:AAA3453



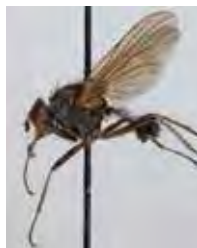
[Lateral]
Anthomyiidae
BIN URI: BOLD:ACE3554



[Lateral]
Anthomyiidae
BIN URI: BOLD:AAL8103



[Lateral]
Pegomya wintheri
BIN URI: BOLD:ABA6845



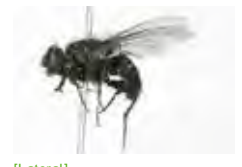
[Lateral]
Pegomya notabilis



[Lateral]
Anthomyiidae
BIN URI: BOLD:AAG2451



[Lateral]
Anthomyiidae
BIN URI: BOLD:AAG2453



[Lateral]
Calliphora latifrons
BIN URI: BOLD:AAJ0837



[Lateral]
Calliphora vicina
BIN URI: BOLD:AAB6579



[Lateral]
Diptera
BIN URI: BOLD:AAG6745



[Lateral]
Cecidomyiidae
BIN URI: BOLD:ABX0280



[Lateral]
Cecidomyiidae
BIN URI: BOLD:ACP9392



[Lateral]
Ceratopogonidae
BIN URI: BOLD:AAN5148



[Lateral]
Micropsectra nigripila
BIN URI: BOLD:AAC0022



[Lateral]
Chironomidae
BIN URI: BOLD:AAP6895



[Lateral]
Orthocladius
BIN URI: BOLD:ABX3879



[Lateral]
Chironomidae
BIN URI: BOLD:AAM7064



[Lateral]
Tanytarsus sp.
BIN URI: BOLD:ACB8144



[Lateral]
Diamesinae
BIN URI: BOLD:ACP7903



[Dorsal]
Chironomidae
BIN URI: BOLD:AAV5976



[Lateral]
Eriolobus nana
BIN URI: BOLD:AAH4175



[Lateral]
Medetera apicalis
BIN URI: BOLD:AAZ5135



[Lateral]
Empididae
BIN URI: BOLD:AAV3699



[Lateral]
Psilopa leucostoma
BIN URI: BOLD:ABU5754



[Lateral]
Suillia nemorum
BIN URI: BOLD:AAG0469



[Lateral]
Heleomyzidae
BIN URI: BOLD:AAE1978



[Lateral]
Heleomyzidae
BIN URI: BOLD:AAG0459



[Lateral]
Heleomyzidae
BIN URI: BOLD:AAP2913



[Lateral]
Heleomyzidae
BIN URI: BOLD:AAP6255



[Lateral]
Heleomyzidae
BIN URI: BOLD:AAH4227



[Lateral]
Crossopalpus sp. 1 JMC
BIN URI: BOLD:ACE6928



[Lateral]
Ocydromia glabricula
BIN URI: BOLD:AAF9846



[Lateral]
Symplecta
BIN URI: BOLD:AAF9014



[Lateral]
Muscidae
BIN URI: BOLD:AAP6478



[Lateral]
Helina sp.
BIN URI: BOLD:AAC2498



[Lateral]
Muscidae
BIN URI: BOLD:ACE8833



[Lateral]
Musca autumnalis
BIN URI: BOLD:AAA3187



[Lateral]
Muscina levida
BIN URI: BOLD:AAB8817



[Lateral]
Mydaea
BIN URI: BOLD:ACG6234



[Lateral]
Mycetophilidae
BIN URI: BOLD:ABU5545



[Lateral]
Exechia
BIN URI: BOLD:ACD9501



[Lateral]
Mycetophilidae
BIN URI: BOLD:ABV9018



[Lateral]
Mycetophilidae
BIN URI: BOLD:ACG6078



[Lateral]
Phoridae
BIN URI: BOLD:AAG3236



[Lateral]
Phoridae
BIN URI: BOLD:AAZ6701



[Lateral]
Phoridae
BIN URI: BOLD:AAM9355



[Lateral]
Phoridae
BIN URI: BOLD:AAG3237



[Lateral]
Phoridae
BIN URI: BOLD:ACB6729



[Lateral]
Phoridae
BIN URI: BOLD:ACB2325



[Lateral]
Phoridae
BIN URI: BOLD:AAL9075



[Lateral]
Phoridae
BIN URI: BOLD:AAU5664



[Lateral]
Phoridae
BIN URI: BOLD:AAG3348



[Lateral]
Phoridae
BIN URI: BOLD:ABV3315



[Lateral]
Amphipogon flavum
BIN URI: BOLD:AAP6435



[Lateral]
Psychodidae
BIN URI: BOLD:AAO8538



[Lateral]
Ravinia querula
BIN URI: BOLD:AAP7702



[Lateral]
Scathophaga
BIN URI: BOLD:AAH0023



[Lateral]
Scatopsciara
BIN URI: BOLD:AAH3920



[Lateral]
Sciaridae
BIN URI: BOLD:ACP9775



[Lateral]
Sciaridae
BIN URI: BOLD:AAM9255



[Lateral]
Sphaeroceridae
BIN URI: BOLD:AAG7277



[Dorsal]
Baccha elongata
BIN URI: BOLD:AAG4682



[Lateral]
Xylota
BIN URI: BOLD:AAJ9758



[Lateral]
Tachinidae
BIN URI: BOLD:AAG2175



[Dorsal]
Chaitophorus
BIN URI: BOLD:AAH2856



[Dorsal]
Cnara pruinosa
BIN URI: BOLD:ACP8153



[Lateral]
Aphididae
BIN URI: BOLD:ACF1560



[Lateral]
Aphididae
BIN URI: BOLD:AAB8566



[Dorsal]
Metopophium dirhodum
BIN URI: BOLD:AAE7796



[Lateral]
Phorodon humuli
BIN URI: BOLD:AAH8366



[Dorsal]
Pterocomma
BIN URI: BOLD:ABZ7255



[Dorsal]
Therioaphis tenera tenera
BIN URI: BOLD:AAE2871



[Lateral]
Doratura stylata
BIN URI: BOLD:AAG8821



[Lateral]
Empoasca
BIN URI: BOLD:AAG8687



[Lateral]
Empoasca
BIN URI: BOLD:AAG8850



[Lateral]
Empoasca
BIN URI: BOLD:ACP8206



[Lateral]
Erythrulida
BIN URI: BOLD:AAH8285



[Lateral]
Gyronana serpenta
BIN URI: BOLD:AAG2878



[Dorsal]
Helochara communis
BIN URI: BOLD:AAG8838



[Lateral]
Idiocerus midas
BIN URI: BOLD:ABZ6671



[Lateral]
Stenocranus felti
BIN URI: BOLD:AAG1953



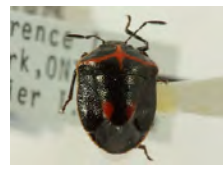
[Dorsal]
Deraeocoris brevis
BIN URI: BOLD:AAH8281



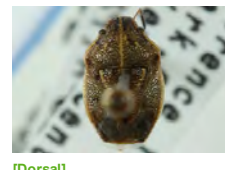
[Dorsal]
Psallovius piceicola
BIN URI: BOLD:AAC4309



[Lateral]
Nabis americiferus
BIN URI: BOLD:AAB8143



[Dorsal]
Cosmopepla bimaculata
BIN URI: BOLD:AAB6098



[Dorsal]
Neottiglossa undata
BIN URI: BOLD:AAE1308



IMAGE NOT AVAILABLE
Pseudococcidae
BIN URI: BOLD:ACP9096



[Lateral]
Liviinae
BIN URI: BOLD:ACP7759



[Dorsal]
Sphragisticus nebulosus
BIN URI: BOLD:AAC8406



[Dorsal]
Saldula saltatoria
BIN URI: BOLD:AAD6477



[Lateral]
Aphidiinae
BIN URI: BOLD:AAA4188



[Lateral]
Dinotrema fjt01
BIN URI: BOLD:AAA7636



[Lateral]
Praon
BIN URI: BOLD:ACE2830



[Lateral]
Praon
BIN URI: BOLD:ACP7683



[Lateral]
Hymenoptera
BIN URI: BOLD:AAU8584



[Lateral]
Braconidae
BIN URI: BOLD:AAU9101



[Lateral]
Braconidae
BIN URI: BOLD:ACP8889



[Lateral]
Cynipidae
BIN URI: BOLD:ACD0634



[Lateral]
Diapriidae
BIN URI: BOLD:AAU9379



[Lateral]
Hymenoptera
BIN URI: BOLD:ACC9418



[Lateral]
Cynipidae
BIN URI: BOLD:AAG0775



[Lateral]
Cynipidae
BIN URI: BOLD:AAU8994



[Lateral]
Cynipidae
BIN URI: BOLD:AAU9459



[Lateral]
Formicidae
BIN URI: BOLD:AAA4977



[Lateral]
Lasius
BIN URI: BOLD:AAN5587



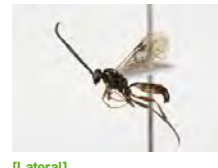
[Lateral]
Formicidae
BIN URI: BOLD:AAI1292



[Lateral]
Cubocephalus
BIN URI: BOLD:AAH1482



[Lateral]
Diadegma nr. Fenestrale
BIN URI: BOLD:AAG7740



[Lateral]
Gelis
BIN URI: BOLD:AAA6277



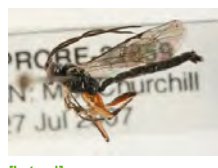
[Lateral]
Hymenoptera
BIN URI: BOLD:AAA6280



[Lateral]
Ichneumon
BIN URI: BOLD:ACE4814



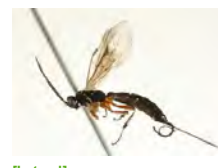
[Lateral]
Itoplectis
BIN URI: BOLD:AAB1281



[Lateral]
Stictopisthus
BIN URI: BOLD:AAA5517



[Lateral]
Oresbius taeniatius
BIN URI: BOLD:AAH1683



[Lateral]
Scambus jft01
BIN URI: BOLD:ACE6645



[Lateral]
Scambus sp.
BIN URI: BOLD:ACI9950



[Lateral]
Stenomacrus jft21
BIN URI: BOLD:AAH9934



[Lateral]
Stenomacrus
BIN URI: BOLD:ACE4848



[Lateral]
Stenomacrus
BIN URI: BOLD:ACN3086



[Lateral]
Ichneumonidae
BIN URI: BOLD:ACE1324



[Lateral]
Ichneumonidae
BIN URI: BOLD:AAN7726



[Lateral]
Cryptinae
BIN URI: BOLD:ACP8665



[Lateral]
Isadelphus inimicus
BIN URI: BOLD:AAN8142



[Lateral]
Ichneumonidae
BIN URI: BOLD:AAG8209



[Lateral]
Cryptinae
BIN URI: BOLD:AAH1497



[Lateral]
Ichneumonidae
BIN URI: BOLD:ACI5610



[Lateral]
Ichneumonidae
BIN URI: BOLD:AAU9328



[Lateral]
Ichneumonidae
BIN URI: BOLD:AAQ2692



[Lateral]
Hymenoptera
BIN URI: BOLD:ACA6944



[Lateral]
Ichneumonidae
BIN URI: BOLD:AAH2004



[Lateral]
Ichneumonidae
BIN URI: BOLD:ACG2110



[Dorsal]
Anagrus
BIN URI: BOLD:ACP9160



[Lateral]
Gonatocerus
BIN URI: BOLD:ACP9254



[Lateral]
Hymenoptera
BIN URI: BOLD:ABX2601



[Lateral]
Myrmica
BIN URI: BOLD:ACP9238



[Lateral]
Myrmica
BIN URI: BOLD:ACP9674



[Lateral]
Telenomus
BIN URI: BOLD:ACB8863



[Lateral]
Platygastridae
BIN URI: BOLD:ACC5761



[Lateral]
Platygastridae
BIN URI: BOLD:AAU9442



[Lateral]
Platygastridae
BIN URI: BOLD:AAN8001



[Lateral]
Scelioninae
BIN URI: BOLD:ACP9235



[Lateral]
Platygastridae
BIN URI: BOLD:ACB0692



[Lateral]
Telenomus
BIN URI: BOLD:AAU9339



[Lateral]
Proctotrupidae
BIN URI: BOLD:AAG7971



[Lateral]
Pteromalus phycidis
BIN URI: BOLD:AAA8292



[Lateral]
Hymenoptera
BIN URI: BOLD:ABV2816



[Lateral]
Pachyneuron
BIN URI: BOLD:ACN0524



[Lateral]
Pteromalidae
BIN URI: BOLD:ABZ9561



[Lateral]
Pteromalidae
BIN URI: BOLD:AAG8348



[Lateral]
Vespa pennsylvanica
BIN URI: BOLD:AAG8042



[Dorsal]
Alucita montana
BIN URI: BOLD:AAB1666



[Dorsal]
Chionodes obscurusella
BIN URI: BOLD:AAA4439



[Dorsal]
Dahlia triquetrella
BIN URI: BOLD:ABX6397



[Dorsal]
Homosetia
BIN URI: BOLD:AAC3988



[Larva]
Wesmaelius pretiosus
BIN URI: BOLD:ACI5934



[Lateral]
Psocoptera
BIN URI: BOLD:ABA6544



[Lateral]
Psocoptera
BIN URI: BOLD:AAP4628



[Dorsal]
Phlaeothripidae
BIN URI: BOLD:ACJ2048